

Product datasheet for RR207222

Map2k2 (NM_133283) Rat Tagged ORF Clone

Product data:

Product Type:	Expression Plasmids
Product Name:	Map2k2 (NM_133283) Rat Tagged ORF Clone
Tag:	Myc-DDK
Symbol:	Map2k2
Synonyms:	Prkmk2
Vector:	pCMV6-Entry (PS100001)
E. coli Selection:	Kanamycin (25 ug/mL)
Cell Selection:	Neomycin
ORF Nucleotide Sequence:	>RR207222 representing NM_133283 Red=Cloning site Blue=ORF Green=Tags(s)

TTTTGTAATACGACTCACTATAGGGCGGCCGGGAATTCGTCGACTGGATCCGGTACCGAGGAGATCTGCC
GCC**GCGATCGC**C

ATGCTGGCCCGGAGGAAGCCGGTGTACCGGCACTCACCATCAACCCTACCATCGCTGAGGGCCCGTCCC
CCACCAGCGAGGGCGCCTCCGAGGCACACCTGGTGGACCTCCAGAAGAAGTTGGAAGAGCTGGACCTGGA
TGAACAGCAGAGGAAGCGGCTGGAGGCCTTCTTACCCAGAAGGCCAAGGTTGGTGGAGCTCAAGGACGAC
GACTTTGAGAGAATCTCAGAAGTGGGTGCAAGCAATGGCGGCGTGGTCAAAAGGCCCGCATAGGCCCT
CTGGCCTCATCATGGCCAGAAAGCTGATCCACCTGGAGATCAAGCCAGCTGTCCGCAACCAGATCATCCG
GGAGCTGCAGGTGCTGCATGAGTGCAACTCACCGTACATCGTGGGCTTTTATGGGGCCTTCTACAGCGAC
GGCGAGATCAGCATCTGCATGGAGCACATGGACGGTGGCTCACTGGACCAGGTAAGGAGGCCAAGC
GCATCCCGAGGACATCTTAGGGAAGGTGAGCATTGCGGTGCTCCGGGGCCTGGCGTACCTCCGCGAGAA
GCACCAGATCATGCATAGAGATGTGAAGCCCTCCAACATTCTGGTGAAGTCTCGTGGAGAGATTAAGCTG
TGCGACTTCGGAGTGAGCGGCCAGTTGATTGACTCCATGGCCAACCTATTGTAGGACACGCTCCTACA
TGTCCCAGAACGGCTGCAGGGCACCCACTACTGTGCAGTCGGACATCTGGAGCATGGGGCTGTGCGT
GGTGGAGCTGGCCATCGGGAGGTACCCCATCCCCACCTGATGCCAAGGAACTAGAGGCCAGCTTTGGC
CGGCCTGTGGTGGACGGGCAGATGGAGAGCCCATAGTGTCTCACCGCGGCCCGGCCCTGGACGCC
CCATCAGTGGTGCATGGGATGGACAGCCGACCAGCCATGGCCATCTTTGAGCTGCTGGACTACATAGTGAA
TGAGCCACCTCCCAAGCTGCCAGTGGTGTGTTGAGCTCAGACTTCCAGGAGTTGTGAATAAATGTCTC
ATTAAGAACCAGCAGAGCGTGCAGACCTCAAGCTGCTGACGAACCATGCCTTCATCAAACGCTCTGAGG
GGGAGGACGTGGACTTCGCTGGCTGGCTATGCAGAACCCTGCGGCTGAAGCAGCCAGCACACCCACGCG
TACTGCAGTG

AG**CGGACCG**ACGCGTACGCGGCCGCTCGAGCAGAACTCATCTCAGAAGAGGATCTGGCAGCAAATGATATCC
TGGATTACAAGGATGACGACGATAAGGTTTAA



[View online »](#)

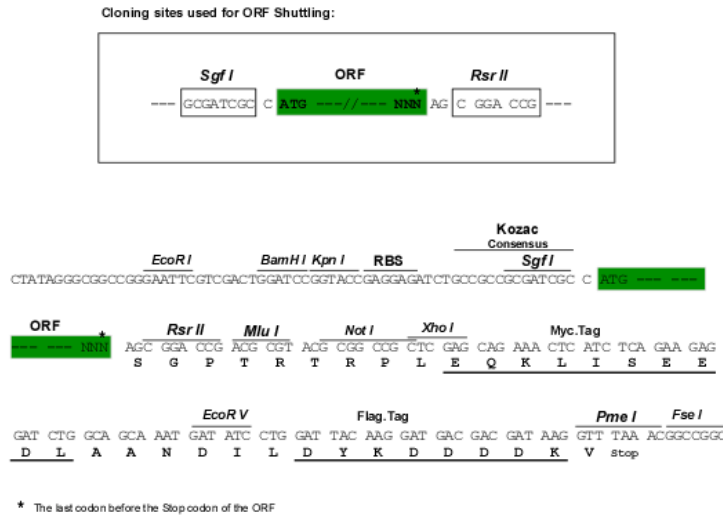
Protein Sequence: >RR207222 representing NM_133283
 Red=Cloning site Green=Tags(s)

MLARRKPVLPAL TINPTIAEGPSPTSEGASEAHLVDLQKLEELDLDEQQRKLEAFLTQKAKVGEIKDD
 DFERISELGAGNGGVVTKARHRPSGLIMARKLIHLEIKPAVRNQIIRELQVLHECNSPYIVGFYGFYSD
 GEISICMEHMDGGSLDQVLKEAKRIPEDILGKYSIAVLRGLAYLREKHQIMHRDVKPSNILVNSRGEIKL
 CDFGVSGQLIDSMANSFVGTSTRSYMSPERLQGHYSVQSDIWSMGLSLVELAIGRYPISPPDAKELEASFG
 RPVVDGADGEPHSVSPRPPGRPI SGHGMDSRPAMAIFELLDYIVNEPPPPLPSGVFSSDFQEFVNKCL
 IKNPAERADLKLLTNHAFIKRSEGEDVDFAGWLCRTLRLKQPSTPRTAV

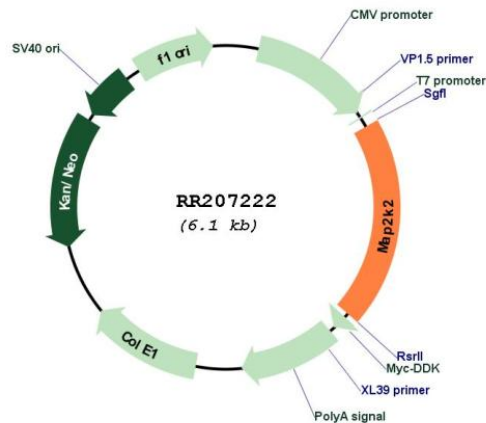
SGP TRTRPLEQKLI SEEDLAANDILDYKDDDDKV

Restriction Sites: SgfI-RsrII

Cloning Scheme:



Plasmid Map:



ACCN: NM_133283

ORF Size:	1200 bp
OTI Disclaimer:	The molecular sequence of this clone aligns with the gene accession number as a point of reference only. However, individual transcript sequences of the same gene can differ through naturally occurring variations (e.g. polymorphisms), each with its own valid existence. This clone is substantially in agreement with the reference, but a complete review of all prevailing variants is recommended prior to use. More info
OTI Annotation:	This clone was engineered to express the complete ORF with an expression tag. Expression varies depending on the nature of the gene.
Components:	The ORF clone is ion-exchange column purified and shipped in a 2D barcoded Matrix tube containing 10ug of transfection-ready, dried plasmid DNA (reconstitute with 100 ul of water).
Reconstitution Method:	<ol style="list-style-type: none"> 1. Centrifuge at 5,000xg for 5min. 2. Carefully open the tube and add 100ul of sterile water to dissolve the DNA. 3. Close the tube and incubate for 10 minutes at room temperature. 4. Briefly vortex the tube and then do a quick spin (less than 5000xg) to concentrate the liquid at the bottom. 5. Store the suspended plasmid at -20°C. The DNA is stable for at least one year from date of shipping when stored at -20°C.
RefSeq:	NM_133283.1 , NP_579817.1
RefSeq Size:	1376 bp
RefSeq ORF:	1203 bp
Locus ID:	58960
UniProt ID:	P36506
Cytogenetics:	7q11
MW:	44.3 kDa
Gene Summary:	a dual-specificity protein kinase that activates the Erk1 and Erk2 kinases [RGD, Feb 2006]