

Product datasheet for RR207203L3

Cd320 (NM_001014201) Rat Tagged Lenti ORF Clone

Product data:

Product Type:	Expression Plasmids
Product Name:	Cd320 (NM_001014201) Rat Tagged Lenti ORF Clone
Tag:	Myc-DDK
Symbol:	Cd320
Synonyms:	RGD1305860
Mammalian Cell Selection:	Puromycin
Vector:	pLenti-C-Myc-DDK-P2A-Puro (PS100092)
E. coli Selection:	Chloramphenicol (34 ug/mL)
ORF Nucleotide Sequence:	The ORF insert of this clone is exactly the same as(RR207203).
Restriction Sites:	SgfI-MluI
Cloning Scheme:	

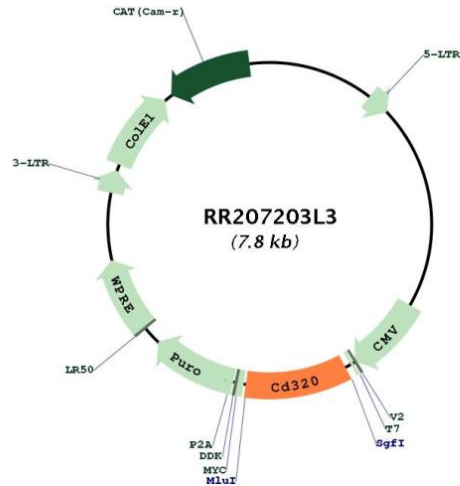
Cloning sites used for ORF Shuttling:



* The last codon before the Stop codon of the ORF.



[View online >](#)

Plasmid Map:


ACCN: NM_001014201

ORF Size: 792 bp

OTI Disclaimer: The molecular sequence of this clone aligns with the gene accession number as a point of reference only. However, individual transcript sequences of the same gene can differ through naturally occurring variations (e.g. polymorphisms), each with its own valid existence. This clone is substantially in agreement with the reference, but a complete review of all prevailing variants is recommended prior to use. [More info](#)

OTI Annotation: This clone was engineered to express the complete ORF with an expression tag. Expression varies depending on the nature of the gene.

Components: The ORF clone is ion-exchange column purified and shipped in a 2D barcoded Matrix tube containing 10ug of transfection-ready, dried plasmid DNA (reconstitute with 100 ul of water).

Reconstitution Method:

1. Centrifuge at 5,000xg for 5min.
2. Carefully open the tube and add 100ul of sterile water to dissolve the DNA.
3. Close the tube and incubate for 10 minutes at room temperature.
4. Briefly vortex the tube and then do a quick spin (less than 5000xg) to concentrate the liquid at the bottom.
5. Store the suspended plasmid at -20°C. The DNA is stable for at least one year from date of shipping when stored at -20°C.

RefSeq: [NM_001014201.1](#), [NP_001014223.1](#)

RefSeq Size: 1192 bp

RefSeq ORF: 795 bp

Locus ID: 362851

UniProt ID: [Q5HZW5](#)

Cytogenetics: 7q13

Gene Summary: Receptor for transcobalamin saturated with cobalamin (TCbl). Plays an important role in cobalamin uptake. Plasma membrane protein that is expressed on follicular dendritic cells (FDC) and mediates interaction with germinal center B cells. Functions as costimulator to promote B cell responses to antigenic stimuli; promotes B cell differentiation and proliferation. Germinal center-B (GC-B) cells differentiate into memory B-cells and plasma cells (PC) through interaction with T-cells and follicular dendritic cells (FDC). CD320 augments the proliferation of PC precursors generated by IL-10.[UniProtKB/Swiss-Prot Function]