

## Product datasheet for **RR207166**

### **Ddx1 (NM\_053414) Rat Tagged ORF Clone**

#### **Product data:**

Product Type:	Expression Plasmids
Product Name:	Ddx1 (NM_053414) Rat Tagged ORF Clone
Tag:	Myc-DDK
Symbol:	Ddx1
Vector:	pCMV6-Entry (PS100001)
E. coli Selection:	Kanamycin (25 ug/mL)
Cell Selection:	Neomycin



[View online »](#)

**ORF Nucleotide Sequence:**

>RR207166 representing NM\_053414  
 Red=Cloning site Blue=ORF Green=Tags(s)

TTTTGTAATACGACTCACTATAGGGCGGCCGGGAATTCGTCGACTGGATCCGGTACCGAGGAGATCTGCC  
 GCC**CGCATCGCC**

ATGGCGGCCCTTCTCCGAAATGGGTGTTATGCCGAGATTGCACAAGCCGTGGAGGAGATGGATTGGCTTC  
 TACCCACTGATATCCAGGCAGAATCTATCCATTGATCCTAGGAGGAGGTGATGTAATGAGCTGCAGA  
 AACGGGAAGTGGAAAACTGGTGCATTTAGTATCCAGTTATCCAGATAGTGTATGAGACTCTGAAAGAC  
 CAACAGGAAGGAAAGAAAGGAAAGCAACTATTAATAACTGGTGTCTGTGCTCAACAAGTGGCAGATGA  
 ACCCATATGATAGAGGTCTGCTTTTGC AATTGGGTGAGATGGTCTGTGTTGTCAGAGCAGAGAGGTGAA  
 GGAGTGGCATGGGTGCAGAGCGACTAGAGGACTGCTGAGAGGGAAGCACTACTACGAAGTATCCTGTCAT  
 GACCAAGGGCTGTGCAGAGTTGGGTGGTCCACCATGCAGGCTTCCTTAGACCTGGTACTGACAAGTTT  
 GATTTGGCTTCGGTGGACAGGAAAGAAATCTCATAATAAACAATTTGATAATTATGGAGAGGAATTCAC  
 TATGCATGACACCATTGGATGTTACTTAGACATCGATAAAGGGCACGTGAAGTTCTTAAGAAATGGAAAA  
 GACCTTGGTCTGGCATTGAAATACCTGCACACATAAAAAACCAAGCCCTCTCCCTGCCTGTGTTTTGA  
 AGAATGCTGAATGAAATTTAACTTTGGTGAAGAAGAATTTAAGTTTCCACCAAAAAGATGGTTTTGTTGC  
 TCTTTCCAAGGCCCTGATAGTTACGTCGTC A AATCGCAGCACACAGGTAATGCACAGGTGTACAAAACA  
 AAATTTCTCCCTAATGCTCCAAAAGCTCTTATTGTGGAACCCCTCCAGAGAGTTAGCTGAGCAAACCTTGA  
 ACAATGTGAAACAGTTTAAAGAAGTACATCGATAATCCTAAATTGCGGGAGCTTCTCATAATTGGTGGCGT  
 TGCAGCTCGGGATCAGCTCTCCGTTCTGGATAATGGGGTTGATATTGTCGTCGGTACTCCAGGAAGATTA  
 GATGATTTGGTGTCAACTGGAAGCTCACTTGTCTCAAGTTAGATTCTGGTCTGGATGAAGCAGATG  
 GGCTTCTCTCAAGGTTATTCTGACTTTATTAACAGGATGCACAACAGATTCCCTCAGATTACTTCTGA  
 TGGGAAAAGACTTCAGGTGATTGTTGCTCTGCTACTCTGCATTTTGGATGTAAGAAACTATCTGAG  
 AAGATAATGCATTTTCCACGTGGGTGGATTTGAAAGGAGAAGATTCTGTTCTGATACTGTGCATCATG  
 TCGTTGTTCTGTGAACCAAAAAGTACAGGCTCTGGGAAAGGCTGGGGAAGAACCACATTGAAACCGA  
 TGATGTCCATGCAAAGGATAACACAAGACCTGGTGCCAACAGTCCAGAGATGTGGTCTGAAGCTATTA  
 AACTGAAAGGGGAGTATGCTGTCCGAGCAATCAAGGAGCACAAGATGGATCAAGCAATTATCTTCTGTA  
 GAACGAAAATTGACTGTGACAACCTGGAGCAGTACTTTATGCAGCAAGGAGGAGGACCTGATAAAAAAGG  
 ACACCAATTCTCATGTGTATGTCTTCATGGTGACAGAAAGCCTCACGAGAGAAAGCAGAACTTGGAAACGA  
 TTTAAGAAAGGAGACGTAAGATTCTGATTTGCACAGACGTAGCTGCCAGAGGAATTGACATCCACGGTG  
 TTCCTTATGTTATTAATGTCACCCTGCCTGATGAAAAGCAGAATTATGTGCACCGGATTGGCAGAGTGGG  
 GCGAGCTGAAAGGATGGGCTGGCTATTTCCCTGGTGGCAACAGAGAAAGAAAAGGTTTGGTATCACGTA  
 TGCAGCAACCGTGGGAAGGGATGCTATAACACTAGACTCAAGGAAGATGGCGGCTGTACTATCTGGTACA  
 ATGAAATGCAGCTACTTCTGAGATAGAAGAACACCTGAACTGTACCATTTCCAGGTTGAGCCAGATAT  
 AAAGGTTCCAGTGGATGAGTTTGTATGGGAAAGTTACATATGGTCAGAAAAGAGCTGCTGGCGGTGGGAAC  
 TATAAAGGCCATGTGGACATCCTGGCACCTACC GTTCAAGAGTTGGCTGCCCTTAAAAGGAAGCACAGA  
 CATCTTTCCTACACCTTGGCTACCTTCCAACCAAGCTGTTCAGAACCTTC

**ACGCGT**ACGCGGCCGCTCGAGCAGAAACTCATCTCAGAAGAGGATCTGGCAGCAAATGATATCCTGGATT  
 ACAAGGATGACGACGATAAGGTTTAA

**Protein Sequence:** >RR207166 representing NM\_053414  
 Red=Cloning site Green=Tags(s)

```

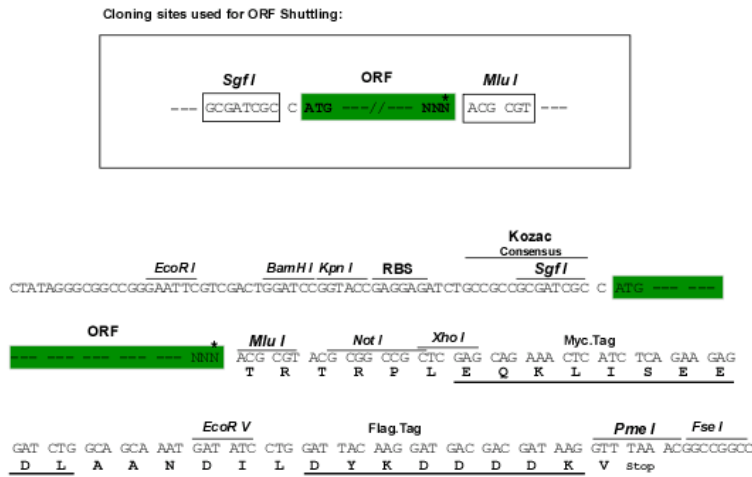
MAAFSEMGVMEIAQAVEEMDWLLPTDIAESIPLILGGGDVLMMAETGSGKTGAFSIPVIQIVYETLKD
QQEGKKGKATIKTGASVLNKWQMNPHYDRGSFAFIGSDGLCCQSREVKWEHGCRA TRGLLRGKHYYEVSCH
DQGLCRVGWSTMQASLDLGTDFGFGGGTGKKSHNKQFDNYGEEFTMHDITIGCYLDIDKGHVKFSKNGK
DLGLAFEIPAHIKNQALFPACVLKNAELKFNFGEFEFKFPKDG FVALSKAPDSYVVKSQHTGNAQVSQT
KFLPNAPKALIVEPSRELAEQTLNNVKQFKKYIDNPKLRELLIIGGVAARDQLSVLDNGVDIVVGT PGR
DDL VSTGKLNLSQVRFLVLDEADGLLSQGYSDFINRMHNQIPQITSDGKRLQVIVCSATLHSDVKKLSE
KIMHFPTWVDLKGEDSVPD TVHHVVPVNPKTDRLWERLGKNHIRTDDVHAKDNTRPGANSPEMWEA IAK
ILKGEYAVRAIKEHKMDQAIIFCRTKIDCNLEQYFMQGGGPKKGGHGFSCVCLHGDRKPHERKQNLER
FKKGDVRF LICTDVAARGIDIHGVPYVINVTLPDEKQNYVHRIGRVGRAERMGLAISLVATEKEKVYHV
CSNRGKGCYNTRLKEDGGCTI WYNEMQLLSEIEEHLNCTISQVEPDIKVPVDEFD GKVTYGGQKRAAGGN
YKGHVDILAPTVQELAALEKEAQT SFLHLGYLPNQLFRTF
  
```

TRTRPLEQKLI SEEDLAANDILDYKDDDDKV

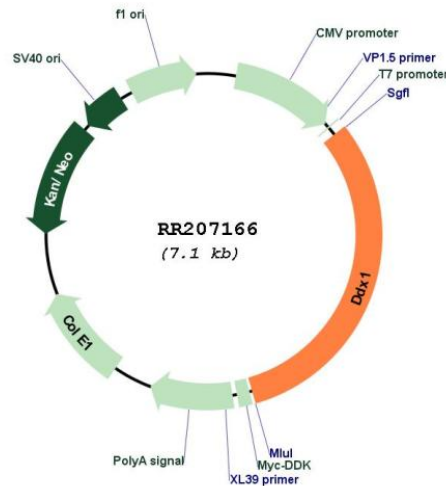
**Restriction Sites:**

Sgfl-MluI

**Cloning Scheme:**



\* The last codon before the Stop codon of the ORF

**Plasmid Map:**


**ACCN:** NM\_053414

**ORF Size:** 2220 bp

**OTI Disclaimer:** The molecular sequence of this clone aligns with the gene accession number as a point of reference only. However, individual transcript sequences of the same gene can differ through naturally occurring variations (e.g. polymorphisms), each with its own valid existence. This clone is substantially in agreement with the reference, but a complete review of all prevailing variants is recommended prior to use. [More info](#)

**OTI Annotation:** This clone was engineered to express the complete ORF with an expression tag. Expression varies depending on the nature of the gene.

**Components:** The ORF clone is ion-exchange column purified and shipped in a 2D barcoded Matrix tube containing 10ug of transfection-ready, dried plasmid DNA (reconstitute with 100 ul of water).

**Reconstitution Method:**

1. Centrifuge at 5,000xg for 5min.
2. Carefully open the tube and add 100ul of sterile water to dissolve the DNA.
3. Close the tube and incubate for 10 minutes at room temperature.
4. Briefly vortex the tube and then do a quick spin (less than 5000xg) to concentrate the liquid at the bottom.
5. Store the suspended plasmid at -20°C. The DNA is stable for at least one year from date of shipping when stored at -20°C.

**RefSeq:** [NM\\_053414.1](#), [NP\\_445866.1](#)

**RefSeq Size:** 2487 bp

**RefSeq ORF:** 2223 bp

**Locus ID:** 84474  
**UniProt ID:** [Q641Y8](#)  
**Cytogenetics:** 6q15  
**MW:** 82.5 kDa  
**Gene Summary:** associated with estrogen-dependent endometrial adenocarcinoma in the BDII rat [RGD, Feb 2006]