

Product datasheet for **RR207137**

Grhl3 (NM_001106690) Rat Tagged ORF Clone

Product data:

Product Type:	Expression Plasmids
Product Name:	Grhl3 (NM_001106690) Rat Tagged ORF Clone
Tag:	Myc-DDK
Symbol:	Grhl3
Synonyms:	Tfcp2l4
Vector:	pCMV6-Entry (PS100001)
E. coli Selection:	Kanamycin (25 ug/mL)
Cell Selection:	Neomycin



[View online »](#)

ORF Nucleotide Sequence:

>RR207137 representing NM_001106690
 Red=Cloning site Blue=ORF Green=Tags(s)

TTTTGTAATACGACTCACTATAGGGCGGCCGGAATTCGTCGACTGGATCCGGTACCGAGGAGATCTGCC
 GCC**GCGATCGCC**

ATGTCGAATGAACCTGATTTTCAGGTCTGTGCGGCTGCTGAAAAATGACCCCGTGAGCTTCCAGAAGTTTC
 CCTACAATAATGAGGATGAGGCCTGGAAGACATACCTGGAGAACCCTTTGACAGCCGCCACCAAGGCCAT
 AATGAGAGTCAATGGGGACGATGAGAGTGTGCTGCTGCTGAGCTTTCTATGACTACTATATGGGTCCC
 AAGGAGAAGCGGATACTGTCTCCAGCACTGGTGGCCGGAATGACCAAGGAAAGAAGTACTACCACAGCA
 TGGACTATGAGCCGGATCTTGCCCGCTTGAGAGCCCCACGCACCTCATGAAATTTCTGACAGAGAACGT
 GTCTGGAAGCCCAGACTACACAGACCAGCTCAAGAAGAACAACCTGCTAGGCTTGAGGGGGGCTCTACCC
 ACCCCCGCAAGACCAGTACCCTGCCCCAGGTCCAAGTAAGCTGGAAGCCGGCTCCATGGACAGCTACC
 TCTTGCCACCAGTGACATGTATGACAACAGCTCCCTCAACTCACTATTTGAGAGCATTATGGCGTTCC
 ACCCACACAGACTTTGAGTACACCCTGGGCTCCCCAAAGCCATTACATCAAAGCGGGGAGTACCC
 ATGGCCTACCTCAACAAGGGTCAGTTCTACCCGGTACCCTACGCACCCAGCGGAGGAAAAGGCCTCT
 CTCTGTCTCCAGCAAAGTCAAGAGCGTGGTGTGATTGTGTTCCGATAATGACAAGGTTCCAGTGGAGCA
 GCTGCGCTTCTGGAGGCACTGGCATTCCCGGCAGCCTACCGCAAAGCAGCGTGTGATCGAGTAGCCGAC
 TGTAAGGAAAACCTCAACACAGTCCAGCACATCGAGGAGGTGGCCTATAACGCACTGTCTTTGTGTGGA
 ATGTTAACGAGGAGGCTAAGGTGTTTCATCGGTGTCAACTGTCTGAGCACAGACTTCTCCTCGCAGAAGGG
 GGTGAAGGGTGTCCCTCAACTTGCAATGACACTTATGACTGTGGAGCAGGCACTGAGCGCTGGGT
 GCCGAGAGGAAGATGCGCGATGATGAACGGAAGCAGTTTCAAGGAAGGTCAAGTGCCAGACTCCAGTA
 ACAATGGCATCAAGGGCTGCCTGCTGCTCGGCTTCAGGGGCAATGAGACCACATACTTCCGGCCAGAGC
 GGACTGGAGACCCAGCCTGTGTTGTTTCATCCCAACCTGCATTCTCCAGCCTACAACGCCAGGAGGG
 GTTGTCCCTCAGCAGGACACAGCAGCTCTGACAGGTTGCTCTGAAGCGAACCTGCTCGCCCTTGCTG
 AGGAGTTTGAGCCTCTCCCTCCAAACAGGCCAAGGAAGATGACCTTCAGAGAGTTCTGTGTATGTGAG
 GAGGGAGACAGAGGAGGTGTTTGACGCACTCATGTTGAAGACCCCGACTGAAGGGGCTGAGGAATGCG
 ATCTCTGAGAAGTATGGCTTCCCTGAGGAGAATATCTGCAAAGTCTACAAGAAATGCAAGCGAGGAATCC
 TGGTCAACATGGACAACAACATCATCCAGCATTACAGCAACCACGTGGCCTTCTGCTGGACATGGGTGA
 GCTGGATGGCAAGATTAGATTATCTGAAGGAGCTA

ACGCGTACGCGGCCGCTCGAGCAGAAACTCATCTCAGAAGAGGATCTGGCAGCAAATGATATCCTGGATT
 ACAAGGATGACGACGATAAGGTTTAA

Protein Sequence:

>RR207137 representing NM_001106690
 Red=Cloning site Green=Tags(s)

MSNELDFRSVRLKNDPVSFQKFPYNNEDAWKTYLENPLTAATKAIMRVNGDDESVAALSFLYDYDMGP
 KEKRILSSSTGGRNDQKKYYHSMYEPDLAPLESPTHLMKFLTENVSGSPDYTDQLKKNLLGLEALP
 TPGKTSTLPPGPSKLEAGSMDSYLLPTSDMYDNSSLNLSLFESIHGVPPTHDFEYTLGSPKAIHIKAGESP
 MAYLNKQGFYPVTLRTPAGGKLSLSSSKVKSVMIVFDNDKVPVEQLRFWRHWSRQPTAKQRVIDVAD
 CKENFNTVQHIEEVAYNALSFVWNVNEEAKVFIGVNLSTDFSSQKGVKGVPLNLQIDTYDCGAGTERLG
 AERKMRDDERKQFRRKVKCPDSSNNGIKGCLLSGFRGNETTYLRPEADLETQPVLFIPLNHFSSLRPPGG
 VVPSAGHSSDRPLKRTCSPFAEEFEPLPSKQAKEDDLQRVLLYVRRETEEVFDALMLKTPDLKGLRNA
 ISEKYGFPEENICKVYKCKRGILVNMDNIIQHYSNHVAFLLDMGELDGKIQIILKEL

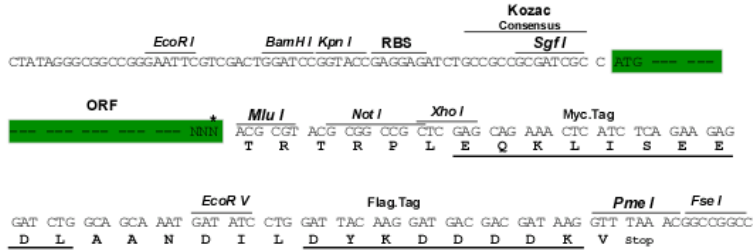
TRTRPLEQKLISEEDLAANDILDYKDDDDKV

Restriction Sites:

Sgfl-MluI

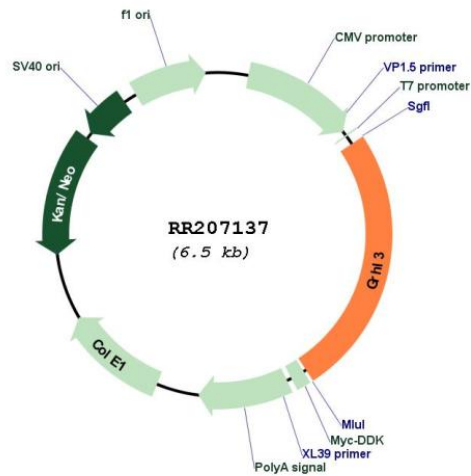
Cloning Scheme:

Cloning sites used for ORF Shutting:



* The last codon before the Stop codon of the ORF

Plasmid Map:



ACCN:	NM_001106690
ORF Size:	1647 bp
OTI Disclaimer:	The molecular sequence of this clone aligns with the gene accession number as a point of reference only. However, individual transcript sequences of the same gene can differ through naturally occurring variations (e.g. polymorphisms), each with its own valid existence. This clone is substantially in agreement with the reference, but a complete review of all prevailing variants is recommended prior to use. More info
OTI Annotation:	This clone was engineered to express the complete ORF with an expression tag. Expression varies depending on the nature of the gene.
Components:	The ORF clone is ion-exchange column purified and shipped in a 2D barcoded Matrix tube containing 10ug of transfection-ready, dried plasmid DNA (reconstitute with 100 ul of water).
Reconstitution Method:	<ol style="list-style-type: none">1. Centrifuge at 5,000xg for 5min.2. Carefully open the tube and add 100ul of sterile water to dissolve the DNA.3. Close the tube and incubate for 10 minutes at room temperature.4. Briefly vortex the tube and then do a quick spin (less than 5000xg) to concentrate the liquid at the bottom.5. Store the suspended plasmid at -20°C. The DNA is stable for at least one year from date of shipping when stored at -20°C.
RefSeq:	NM_001106690.1 , NP_001100160.1
RefSeq Size:	2480 bp
RefSeq ORF:	1650 bp
Locus ID:	298555
Cytogenetics:	5q36
MW:	61.7 kDa