

Product datasheet for RR207073

Serpinh1 (NM_017173) Rat Tagged ORF Clone

Product data:

Product Type:	Expression Plasmids
Product Name:	Serpinh1 (NM_017173) Rat Tagged ORF Clone
Tag:	Myc-DDK
Symbol:	Serpinh1
Synonyms:	Cbp2; Serpinh2
Vector:	pCMV6-Entry (PS100001)
E. coli Selection:	Kanamycin (25 ug/mL)
Cell Selection:	Neomycin
ORF Nucleotide Sequence:	>RR207073 representing NM_017173 Red=Cloning site Blue=ORF Green=Tags(s)

TTTTGTAATACGACTCACTATAGGGCGCCGGAATTCGTCGACTGGATCCGGTACCGAGGAGATCTGCC
GCC**CGATCGCC**

ATGCGCTCTCCTTCTGGGCACCTTATGCTCCTGGCTGTGGCCCTGGCAGCCGAGGTGAAGAAACCTG
TAGAGGCCGAGCCCTGGTACTGCGGAGAAGCTGAGTCCAAGGCGACCACACTGGCAGAGCGCAGCAC
AGGCCTGGCCTCAGCCTGTATCAGGCAATGGCCAAAGATCAGGGGGTGGAGAATATCCTCTGTACCC
TTGGTGGTGGCCATCCCTGGGCCTTGTGTCACTGGGTGGTAAAGCCACCACAGCTTCGAGGCGAAGG
CAGTGTGAGCGCTGAGAAGCTGCGGGATGAGGAGGTGCACACGGGGCTGGGCGAGCTCGTGCCTCCCT
CAGTAACTCCACTGCGCCAATGTGACCTGAAACTGGGCAGCCGCTGTACGGGCCAGCTCCGTGAGC
TTCGCCGATGACTTCGTGCGCAGCAGTAAGCAACTACAACACTGTGAACACTCCAAGATCAACTCCGAG
ACAAGCGCAGCGCGCTGCAGTCCATCAACGAGTGGCCTCGCAGACCACCGACGGCAAGCTGCCAGAGGT
CACCAAGGATGTGGAGCGCACGGATGGGGCACTGCTCGTTAATGCCATGTTCTTTAAGCCGCACTGGGAT
GAGAAGTCCACCATAAGATGGTAGACAACCGTGGCTTCATGGTGACCCGCTCCTACACTGTGGGTGTTA
CGATGATGCACCGGACAGGCCTCTACAACACTATGACGACGAGAAGGAGAAGCTGCAGTGGTGGAGAT
GCCCTTGGCCATAAGCTCTCAGCCTCATCCTCATGCCCCACCACGTAGAACCCTCGAGCGCCTG
GAGAAGTTGCTGACCAAGGAGCAACTAAAGACCTGGATGGGGAAGATGCAGAAGAAGGCTGTTGCCATCT
CCCTGCCCAAGGGAGTGGTGGAGGTGACCCATGACCTGCAGAAACATCTGGCCGACTGGCCTGACTGA
GGCCATCGACAAGAACAAGGCAGACTTATCGCGCATGTCTGGCAAGAAGGATCTGTACCTGGCCAGTGTG
TTCCACGCCACTGCCTTCGAGTGGGACACAGAGGGCAACCCCTTTGACCAGGACATCTACGGCGTGAGG
AGCTGCGCAGCCCAAGCTGTTCTATGCCGACCACCCCTTCATCTTCTGGTGGCAGATAATCAGAGCGG
CTCCTTGTGTTCAATGGCCGCTGGTCCGGCCCAAGGGAGACAAGATGCGAGACGAGTTG

ACGCGTACGCGGCCGCTCGAGCAGAAACTCATCTCAGAAGAGGATCTGGCAGCAAATGATATCCTGGATT
ACAAGGATGACGACGATAAGGTTTAA



[View online »](#)

Protein Sequence: >RR207073 representing NM_017173
 Red=Cloning site Green=Tags(s)

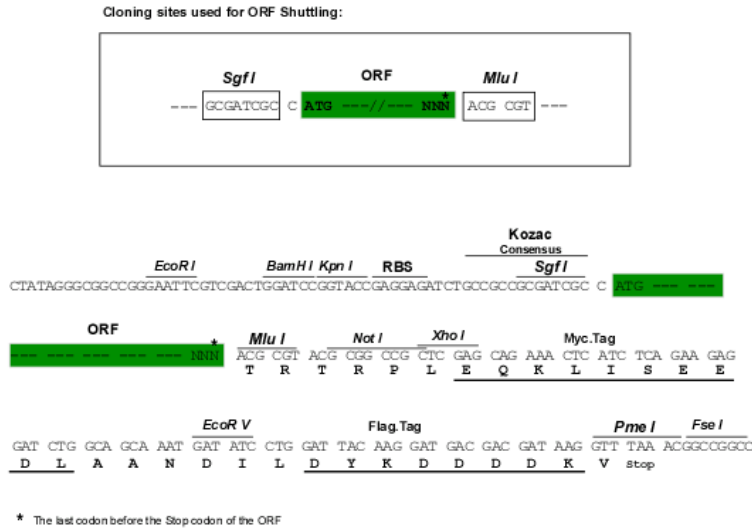
MRSLLLGTLCLLAVALAAEVKPPVEAAAPGTAEKLSKATTLAERSTGLAFSLYQAMAKDQAVENILLSP
 LVVASSLGLVSLGGKATTASQAKAVLSAEKLRDEEVHTGLGELVRSLSNSTARNVTWKLGSRLYGPSSVS
 FADDFVRSKQHYNCEHSKINFRDKRSALQSINEWASQTGDGKLPVTKDVERTDGALLVNAMFFKPHWD
 EKFFHHKMVDNRFMVTRSYTVGVMTMMHRTGLYNYDDEKEKLQLVEMPLAHKLSLIIILMPHHVEPLERL
 EKLLTKEQLKTWMGKMQKKAVAISLPGVVEVTHDLQKHLAAGLGLTEAIDKNKADLSRMSGKLDLYLASV
 FHATAFEWDTEGNPFDQDIYGREELRSPKLFYADHPFIFLVRDNQSGSLLFIGRLVRPKGDKMRDEL

TRTRPLEQKLISEEDLAANDILDYKDDDDKV

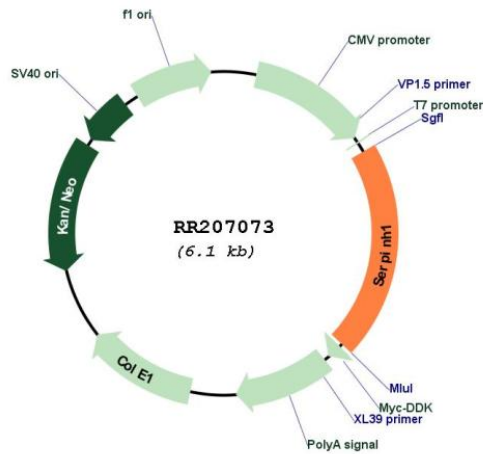
Restriction Sites:

SgfI-MluI

Cloning Scheme:



Plasmid Map:



ACCN:

NM_017173

ORF Size:	1251 bp
OTI Disclaimer:	The molecular sequence of this clone aligns with the gene accession number as a point of reference only. However, individual transcript sequences of the same gene can differ through naturally occurring variations (e.g. polymorphisms), each with its own valid existence. This clone is substantially in agreement with the reference, but a complete review of all prevailing variants is recommended prior to use. More info
OTI Annotation:	This clone was engineered to express the complete ORF with an expression tag. Expression varies depending on the nature of the gene.
Components:	The ORF clone is ion-exchange column purified and shipped in a 2D barcoded Matrix tube containing 10ug of transfection-ready, dried plasmid DNA (reconstitute with 100 ul of water).
Reconstitution Method:	<ol style="list-style-type: none">1. Centrifuge at 5,000xg for 5min.2. Carefully open the tube and add 100ul of sterile water to dissolve the DNA.3. Close the tube and incubate for 10 minutes at room temperature.4. Briefly vortex the tube and then do a quick spin (less than 5000xg) to concentrate the liquid at the bottom.5. Store the suspended plasmid at -20°C. The DNA is stable for at least one year from date of shipping when stored at -20°C.
RefSeq:	NM_017173.1 , NP_058869.1
RefSeq Size:	2063 bp
RefSeq ORF:	1254 bp
Locus ID:	29345
UniProt ID:	P29457
Cytogenetics:	1q32
MW:	46.5 kDa
Gene Summary:	binds collagen; may act as a molecular chaperone [RGD, Feb 2006]