

Product datasheet for **RR207022**

Srp68 (NM_001108840) Rat Tagged ORF Clone

Product data:

Product Type:	Expression Plasmids
Product Name:	Srp68 (NM_001108840) Rat Tagged ORF Clone
Tag:	Myc-DDK
Symbol:	Srp68
Vector:	pCMV6-Entry (PS100001)
E. coli Selection:	Kanamycin (25 ug/mL)
Cell Selection:	Neomycin



[View online »](#)

ORF Nucleotide Sequence:

>RR207022 representing NM_001108840
 Red=Cloning site Blue=ORF Green=Tags(s)

TTTTGTAATACGACTCACTATAGGGCGGCCGGAATTCGTCGACTGGATCCGGTACCGAGGAGATCTGCC
 GCC**CGATCGCC**

ATGGCTGCTGAGAAGCAGATCCCGGTGGTGGTAGTGGTGGTGGGAGCGGCCGGCGCGCGCGCGG
 GAGGGAGCGGAGGTGGACGCAGTGCCGGAGGAGACGAGAATAAAGAAAACGAACGCCCTTCAGCCGATC
 GAAGGCAAACAAAGATTCGGGGATAGCCTGAGTTGGAGATTCTGCAGTTATTAAGGAGTCGCAGCAG
 CAGCATGGCCTACGGCACGGAGACTTCCAGCGGTACAGGGGCTACTGTTCTCGAAGACAAAGCGCCTCC
 GGAAAACACTCAACTTTAAGATGGGGAACAGACAAAATCACCGGAAGAAAGTACAGAGGAGCTCCT
 GACTGACAGCAGATACCTGCTGCTGTTCTGATGGATGCAGAAAGAGCCTGGAGCTACGCCATGCAGCTC
 AAACAGGAAGCCAACACCGAGCCCCGAAAACGGTTTCACTGTCTCGCCTTCGAAAAGCCGTGAAGC
 ACGCCGAGGAACGGAGCGTTGTGTGAGAGCAGCCGTGGATGCTAAGACCAAGCTAGAGGCTCAGGC
 CTATACAGCTTACCTCTCGGGATGCTGCGCTTTGAACACCAGGAGTGGAAAGCTGCCATTGAGGCTTTC
 AACAGATGCAAACTATCTATGAGAAGCTAGCCAGCGCTTACAGAGGAGCAGGCTGTGCTGTACAACC
 AGCGCGTAGAGGAGATCTCGCCCAACATCCGCTACTGTGCATATAACATTGGGGACCAGTCAGCCATCAA
 TGAACATGCAGATGAGACTGAGGTCTGGGGCACAGAGGGGCTCCTTGCTGAAAACTTGAGGCTTG
 ATCACTCAGACTCGAGCCAAGCAGGCAGCGACCATGAGTGAGGTGGAGTGGAGGGGACAGGACGGTCCCG
 TGAAGATCGACAAAGTGAAGATCTTCTTACTGGGACTGGCTGACAATGAAGCCGCATTGTGCAGGCTGA
 AAGTGAAGAAACGAAGGAGCGTCTGTTCGAGTCGATGCTCAGTGAGTGCCGAGACGCCCTCAGGCCGTG
 AGGGAGGAGCTCAAGCTGATCAGAAACAGAGAGATTACACCGTCGATGGAGAGTCAGGGAAGGTATCGA
 ATCTCCAGTACCTGCACAGCTACCTGACCTACATCAAGCTGTCCACAGCGATCAGGAGAAATGAGAACAT
 GGCTAAAGGGCTGCACAGGGCTCTGCTGCAGCAGCAGCCGGAAGATGACAGCAAGCGCTCTCCCGGCT
 CAGGACCTCATCCGGCTCTACGACATCATTCTGCAGAATCTGGTGAATTGCTGCAGCTTCTGGCTTAG
 AAGAAGACAGAACCTTCCAGAAAGAGATAGGCCTCAAGACCCTGGTGTCAAAGCTTACAGGTGTTTCTT
 CATCGCTCAGTCTACGTGCTGGTGAAGAAGTGGAGCGAAGCCCTCGTCTGTATGACAGAGTTCTCAA
 TATGCAAGTGAAGTGAAGTCTCATGGGGAGCCTTCAAGAACAGCCTGAAGGACCTGCCTGATGTCAAG
 AGCTCATCACTCAGGTGCGGTGAGAGAAGTCTGCTGCAGGCCGACGCTATCCTGGATGCAATGAGTC
 CCATCAAACGACACGGCCTCCAAGTCAAGGACAATACGCTCTCGTTGAACGGTTTGAGACCTTTTGC
 CTGGACCTTCCCTTGTACCAAGCAGGCCAGCCTCGTGCCTTCCCCCGGATTCCAGCCATCCCT
 GCAAGCCTCTGTTCTTTGACCTGGCCCTCAACCAGTGGCCTTCCACCTTTGAGGACAAATTGGAGCA
 GAAGACCAAGAGCGGCCCTCACAGGCTACATCAAGGCATCTTTGGTTTCAGGAGC

ACGCGTACGCGGCCGCTCGAGCAGAACTCATCTCAGAAGAGGATCTGGCAGCAAATGATATCCTGGATT
 ACAAGGATGACGACGATAAGGTTTAA

Protein Sequence:

>RR207022 representing NM_001108840
 Red=Cloning site Green=Tags(s)

MAAEKQIPGGSGGGSGGGGGGGSGGGRSAGGDENKENERPSAGSKANKEFGDSLLEILQVIKESQ
 QHGLRHGDFQRYRGYCSRRQRRLRKTLLNFKMGNRHKFTGKKVTEELLTDSRYLLLVLMDAERAWSYAMQL
 KQEANTEPRKRFHLLSRLRKAVKHAEELERLCESSRVDKTKLEAQAYTAYLSGMLRFEHQEWKAAIEAF
 NRCKTIYEKLASAFTEEQAVLYNQRVVEEISPNIRYCAYNIGDQSAINELMQMRLRSGGTEGLLAEKLEAL
 ITQTRAKQAATMSEVEWRGRTVPVKIDKVRIFLLGLADNEAAIVQAESEETKERLFESMLSECRDALQAV
 REELKPDQKQRDYTVDGESGKVSNLQYLHSHYLYIKLSTAIRNENMAKGLHRALLQQPEDDSKRSRPP
 QDLIRLYDIILQNLVELLQLPGLLEEDRTFQKEIGLKTLLVFKAYRCFFIAQSYVLVKKWSEALVLYDRVLK
 YASEVSSHGGAFKNSLKDLPDVQELITQVRSEKCSLQAAAILDANESHQTDASQVKDNTPLVERFETFC
 LDPSLVTKQASLVHFPFGFQIPCKPLFFDLALNHVAFPPLEDKLEQKTKSGLTGYIKGIFGFRS

TRTRPLEQKLISEEDLAANDILDYKDDDDKV

Restriction Sites:

Sgfl-MluI

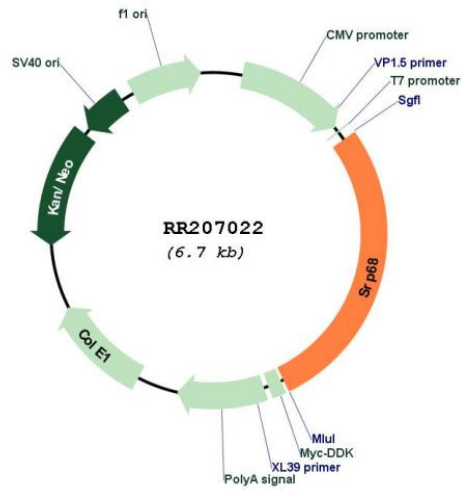
Cloning Scheme:

Cloning sites used for ORF Shutting:



* The last codon before the Stop codon of the ORF

Plasmid Map:



ACCN: NM_001108840

ORF Size: 1875 bp

OTI Disclaimer:	The molecular sequence of this clone aligns with the gene accession number as a point of reference only. However, individual transcript sequences of the same gene can differ through naturally occurring variations (e.g. polymorphisms), each with its own valid existence. This clone is substantially in agreement with the reference, but a complete review of all prevailing variants is recommended prior to use. More info
OTI Annotation:	This clone was engineered to express the complete ORF with an expression tag. Expression varies depending on the nature of the gene.
Components:	The ORF clone is ion-exchange column purified and shipped in a 2D barcoded Matrix tube containing 10ug of transfection-ready, dried plasmid DNA (reconstitute with 100 ul of water).
Reconstitution Method:	<ol style="list-style-type: none"> 1. Centrifuge at 5,000xg for 5min. 2. Carefully open the tube and add 100ul of sterile water to dissolve the DNA. 3. Close the tube and incubate for 10 minutes at room temperature. 4. Briefly vortex the tube and then do a quick spin (less than 5000xg) to concentrate the liquid at the bottom. 5. Store the suspended plasmid at -20°C. The DNA is stable for at least one year from date of shipping when stored at -20°C.
RefSeq:	NM_001108840.1 , NP_001102310.1
RefSeq Size:	2517 bp
RefSeq ORF:	1878 bp
Locus ID:	363707
Cytogenetics:	10q32.1
MW:	70.5 kDa