

Product datasheet for **RR206941**

Trim8 (NM_001128083) Rat Tagged ORF Clone

Product data:

Product Type:	Expression Plasmids
Product Name:	Trim8 (NM_001128083) Rat Tagged ORF Clone
Tag:	Myc-DDK
Symbol:	Trim8
Vector:	pCMV6-Entry (PS100001)
E. coli Selection:	Kanamycin (25 ug/mL)
Cell Selection:	Neomycin



[View online »](#)

ORF Nucleotide Sequence:

>RR206941 representing NM_001128083
 Red=Cloning site Blue=ORF Green=Tags(s)

TTTTGTAATACGACTCACTATAGGGCGGCCGGAATTCGTCGACTGGATCCGGTACCGAGGAGATCTGCC
 GCC**CGGATCGCC**

ATGGCGGAGAATTGGAAGAACTGCTTTGAGGAGGAGCTCATCTGCCCATCTGCCTGCACGTTTTCTGTGG
 AACCGGTGCAGCTGCCGTGCAAACACAACCTTCTGCCGGGGCTGCATCGGGGAGGCTTGGGCAAGGACAG
 TGGCCTTGTGCGTTGCCCGGAGTCAACACAGGCCATAATCAGAAGCCGGCCTGGAGAAGAACCTGAAG
 CTCACCAACATCGTGGAGAAGTTCAACGCCCTGCACGTGGAGAAGCCCCGACGGCACTGCACTGCGTGT
 TCTGTGCGCGGCCCGCTGCCGGCACAGAAGGTCTGCCTGCGCTGCGAGGCTCCCTGCTGCCAGTC
 TCACGTGCAGACGCACCTGCAGCAGCCCTCCACCGCCCGGGCACCTCCTGGTGGAGGCGGACGACGTG
 CGGGCCTGGAGCTGCCCGCAGCACAACGCCCTACCGCCTGTACCACTGCGAGGCGGACGAGTGGCGGTGT
 GCCAGTACTGCTGCTACTACAGCGCGCGCATCAGGGACTCGGTGTGTGACGTGGAGATACGGAGGAA
 TGAGATACGGAAGATGCTAATGAAGCAGCAGGAGCGACTGGAGGAGAGAGCAGGACATTGAGGACCAG
 TTGTACAAGCTTGAGTCAGACAAGCGCCTGGTGGAGGAGAAAGTGAAGCAACTGAAGGAGGAAGTGAGGC
 TGCAATATGAAAAGCTGCACCAGCTGCTGGACGAGGACCTGCGGCAGACAGTGGAGGTCCTAGACAAGGC
 GCAGGCCAAGTTCTGCAGCGAGAACCGGGCAGGCGCTGCACCTCGGGGAGCGCATGCAAGAGGCTAAG
 AAGCTGCTGGGCTCCCTGCAGCTCCTCTTTGACAAGACAGAGGACGTGAGCTTATGAAGAATACCAAGT
 CTGTGAAAATCCTAATGGACAGGACCCAGACCTGCACAGGCAGCAGCCTTCTCCCCCTAAGATCGGCCA
 CCTGAAGTCCAAGCTCTTCTGAACGAGGTGGCCAAGAAGGAGAAGCAGTTGCGGAAGATGCTAGAAGGT
 CCCTTCAGCAGCGCGGTGCCCTTCTACAGAGCGTCCCCTGTACCCTTGTGGTGAACAGCTCTGGGG
 CAGAGAAGCGTAAGCACTCCACGGCCTCCCAGAGGCTAGCTTCTGGAGACTTCACTCAGGCCCGTGGG
 CAGCCAGTACGGGGCAGCAGGCCAGCCAGCAGGAGGGCAGTCCGGGCAACCCCTGGGGCCCTGTAGC
 TCCACGCAGCACTTGGTTGCTTTGCCAGGTGGTCCCAGCCAGTACACTCGAGTCTGTGTTTCCCCAT
 CACAGTACCCCAATGGCTCTGCCACTCAGCAGCCATGCTACCCAGTATGGCGGTGCAAGATTCTCGT
 CTGTTCTGTGGACAAGTGTATTGTTCTCCGTGGCCAACCATGGTGGCCACCAGCCGATACCCCGATCC
 GGCCACTTCCCTGGACAGTGCCTCTCAAGAATACTCACACCCACTTCCACCCACACCCCTCCGTCCTC
 AGTCCCTCTTGGCTGGCAGTCAAGACTGGCTCGACGCTTCCAGCAGCCTGGCCACCAAGATTCTA
 CAGGGTGTATGGCAGCCATCCACCAAACTATGTGACAAGC

ACGCGTACGCGGCCGCTCGAGCAGAACTCATCTCAGAAGAGGATCTGGCAGCAAATGATATCCTGGATT
 ACAAGGATGACGACGATAAGGTTTAA

Protein Sequence:

>RR206941 representing NM_001128083
 Red=Cloning site Green=Tags(s)

MAENWKNCFEELICPICLHVFVEPVQLPCKHNFRCGIGEAWAKDSSLVRCPECNQAYNQKPGLEKNLK
 LTNIVEKFNALHVEKPPTALHCVFCRRGPPLPAQKVLCRCEAPCCQSHVQTHLQQPSTARGHLLVEADDV
 RAWSCPQHNAAYRLYHCEAEQVAVCYCCYYSGAHQGHVCDVEIRRNEIRKMLMKQERLEEREQDIEDQ
 LYKLESDKRLVEEKVSQLKEEVRLQYEKLHQLLDEDLRQTVEVLDKAQAKFCSENAQAALHLGERMQEAK
 KLLGSLQLLFDKTEDVSMKNTKSVKILMDRTQTCTGSSLSPPKIGHLNSKFLNEVAKKEKQLRKMLEG
 PFSTPVPFLQSVPLYPCGVNSSGAEKRKHSTAFPEASFLETSSGPVGSQYGAAGPASSEGQSGQPLGPCS
 STQHLVALPGGAQPVHSSPVFPSPQYPNGSATQQPMLPQYGGKILVCSVDNICYSSVANHGGHQPYPRS
 GHFPWTVPVSPQESHPLPPTSPVPSQLSGLAVRDWLDASQQPGHQDFYRVYVQGPSTKHYVTS

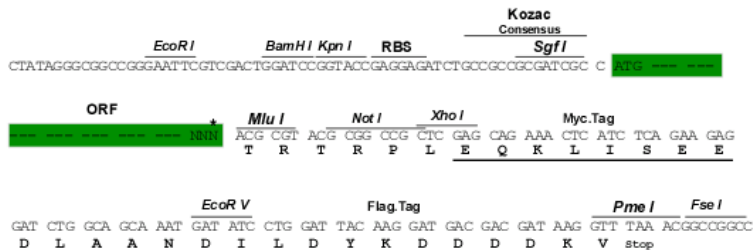
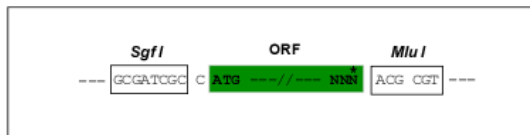
TRTRPLEQKLISEEDLAANDILDYKDDDDKV

Restriction Sites:

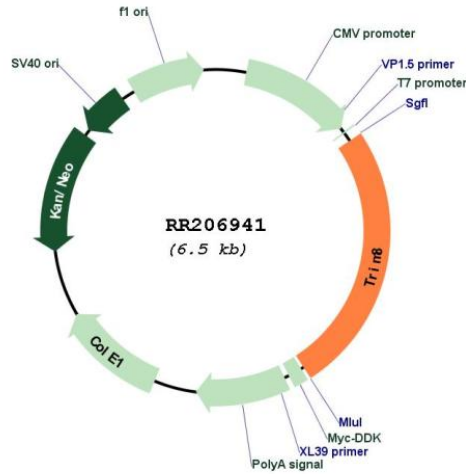
Sgfl-MluI

Cloning Scheme:

Cloning sites used for ORF Shuttling:



* The last codon before the Stop codon of the ORF

Plasmid Map:


ACCN:	NM_001128083
ORF Size:	1653 bp
OTI Disclaimer:	The molecular sequence of this clone aligns with the gene accession number as a point of reference only. However, individual transcript sequences of the same gene can differ through naturally occurring variations (e.g. polymorphisms), each with its own valid existence. This clone is substantially in agreement with the reference, but a complete review of all prevailing variants is recommended prior to use. More info
OTI Annotation:	This clone was engineered to express the complete ORF with an expression tag. Expression varies depending on the nature of the gene.
Components:	The ORF clone is ion-exchange column purified and shipped in a 2D barcoded Matrix tube containing 10ug of transfection-ready, dried plasmid DNA (reconstitute with 100 ul of water).

Reconstitution Method:

1. Centrifuge at 5,000xg for 5min.
2. Carefully open the tube and add 100ul of sterile water to dissolve the DNA.
3. Close the tube and incubate for 10 minutes at room temperature.
4. Briefly vortex the tube and then do a quick spin (less than 5000xg) to concentrate the liquid at the bottom.
5. Store the suspended plasmid at -20°C. The DNA is stable for at least one year from date of shipping when stored at -20°C.

RefSeq: [NM_001128083.1](#), [NP_001121555.1](#)

RefSeq Size: 3430 bp

RefSeq ORF: 1656 bp

Locus ID: 688785

Cytogenetics: 1q54

MW: 61.5 kDa