

Product datasheet for **RR206908**

MyI3 (NM_012606) Rat Tagged ORF Clone

Product data:

Product Type: Expression Plasmids
Product Name: MyI3 (NM_012606) Rat Tagged ORF Clone
Tag: Myc-DDK
Symbol: MyI3
Synonyms: MLCIV; Mylc1v; rVMLC1
Vector: pCMV6-Entry (PS100001)
E. coli Selection: Kanamycin (25 ug/mL)
Cell Selection: Neomycin
ORF Nucleotide Sequence: >RR206908 representing NM_012606
Red=Cloning site Blue=ORF Green=Tags(s)

TTTTGTAATACGACTCACTATAGGGCGCCGGGAATTCGTCGACTGGATCCGGTACCGAGGAGATCTGCC
GCC**CGGATCGCC**

ATGGCCCCAAAAGCCAGAGCCCAAGAAGGACGATGCCAAAACCGCTGCCCCAAAGCAGCTCCGGCCC
CTGGGCTGCACCTGCGGCTGCACCTGAGCCCGAACGCCCTAAGGAAGCAGAGTTTGATGCCTCCAAGT
TAAGATTGAGTTCACGCCTGAACAGATTGAAGAGTTCAAGGAGGCCTTCCAAGTCTTGGACGCACCT
AAGGGCGAGATGAAGATCACGTACGGGCAGTGTGGGGATGTCCTGCGGGCTCTGGGACAGAATCCTACCC
AGGCAGAGGTGCTCCGCGTCTTGGGGAAGCCAAACAGGAAGAGCTCAACTCCAAGATGATGGATTTTGA
AACATTCTGCCATGCTGCAGCACATCTCCAAGAAACAAAGACACGGGCACATATGAGGACTTCGTGGAG
GGGCTGCGGGTCTTCGACAAGGAGGGCAACGGAAGTGTATGGGTGCAGAGCTCCGTCATGTGCTGGCCA
CGCTGGGTGAGAGGCTGACAGAAGACGAGGTAGAGAACTGATGGCTGGTCAAGAAGACTCCAATGGCTG
CATCAACTATGAAGCATTGTGAAGCACATCATGGCCAGC

ACGCGTACGCGGCGCTCGAGCAGAACTCATCTCAGAAGAGGATCTGGCAGCAAATGATATCCTGGATT
ACAAGGATGACGACGATAAGGTTTAA

Protein Sequence: >RR206908 representing NM_012606
Red=Cloning site Green=Tags(s)

MAPKKPEPKKDDAKTAAPKAAPAPAAAPAAPEPERPKEAEFDASKIKIEFTPEQIEEFKEAFQLFDRT
KGEMKITYGQGDVLRALGQNPTQAEVLRVLGPKQEELNSKMDFETFLPMLQHISKNKDTGTYESDFVE
GLRVFDKEGNGTVMGAELRHVLA TLGERL TEDEVEKLMAGQEDSNGCINYEAFVKHIMAS

TRTRPLEQKLISEEDLAANDILDYKDDDDKV

Restriction Sites: SgfI-MluI

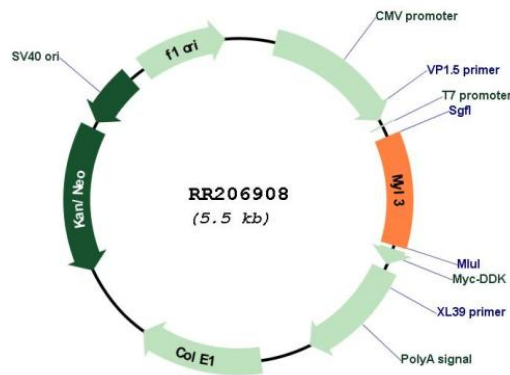


[View online »](#)

Cloning Scheme:



Plasmid Map:



ACCN: NM_012606

ORF Size: 600 bp

OTI Disclaimer: The molecular sequence of this clone aligns with the gene accession number as a point of reference only. However, individual transcript sequences of the same gene can differ through naturally occurring variations (e.g. polymorphisms), each with its own valid existence. This clone is substantially in agreement with the reference, but a complete review of all prevailing variants is recommended prior to use. [More info](#)

OTI Annotation: This clone was engineered to express the complete ORF with an expression tag. Expression varies depending on the nature of the gene.

Components: The ORF clone is ion-exchange column purified and shipped in a 2D barcoded Matrix tube containing 10ug of transfection-ready, dried plasmid DNA (reconstitute with 100 ul of water).

Reconstitution Method:

1. Centrifuge at 5,000xg for 5min.
2. Carefully open the tube and add 100ul of sterile water to dissolve the DNA.
3. Close the tube and incubate for 10 minutes at room temperature.
4. Briefly vortex the tube and then do a quick spin (less than 5000xg) to concentrate the liquid at the bottom.
5. Store the suspended plasmid at -20°C. The DNA is stable for at least one year from date of shipping when stored at -20°C.

RefSeq: [NM_012606.2](#), [NP_036738.1](#)

RefSeq Size: 928 bp

RefSeq ORF: 603 bp

Locus ID: 24585

UniProt ID: [P16409](#)

Cytogenetics: 8q32

MW: 22.2 kDa

Gene Summary: predominant myosin light chain in cardiac tissue [RGD, Feb 2006]