

Product datasheet for **RR206865**

Lsamp (NM_017242) Rat Tagged ORF Clone

Product data:

Product Type:	Expression Plasmids
Product Name:	Lsamp (NM_017242) Rat Tagged ORF Clone
Tag:	Myc-DDK
Symbol:	Lsamp
Synonyms:	MGC105298
Mammalian Cell Selection:	Neomycin
Vector:	pCMV6-Entry (PS100001)
E. coli Selection:	Kanamycin (25 ug/mL)
ORF Nucleotide Sequence:	>RR206865 representing NM_017242 Red=Cloning site Blue=ORF Green=Tags(s)

TTTTGTAATACGACTCACTATAGGGCGGCCGGAATTCGTCGACTGGATCCGGTACCGAGGAGATCTGCC
GCC**CGATCGCC**

ATGGTCGGGAGAGTTCAACCTGATCGGAAACAGTTGCCACTGGTCTACTGAGACTGCTCTGCCTTCTTC
CCACAGGACTGCCGTTTCGACGCGTGGATTTAAACCGAGGCACGGACAACATCACCGTGAGGCAGGGGGA
CACGGCCATCCTCAGGTGTGGTAGAAGACAAGAAGTGGCCTGGTTGAACCGCTCTGGCATC
ATCTTCGCTGGACACGACAAGTGGTCTCTGGACCCTCGGTTGAGCTGGAGAAACGCCATGCTCTGGAAT
ACAGCCTCCGAATCCAGAAGGTGGATGTCTATGATGAAGGATCCTACACATGCTCAGTTCAGACACAGCA
TGAGCCCAAGACCTCTCAAGTTTACTTGATTGTACAAGTTCACCAAAGATCTCCAACATCTCCTCGGAT
GTCACTGTGAATGAGGGCAGCAATGTAACCCTGGTCTGCATGGCCAATGGGCGCCCTGAACCTGTTATCA
CCTGGAGACACCTTACACCACCTTGAAGAGAATTTGAAGGAGAAGAAGAAATATCTGGAGATCCTAGGCAT
CACCAGGGAACAGTCAGGCAAAATGAGTGAAGGCTGCCAACGAGGCTCCTCCGCGGATGTCAAACAA
GTCAAGGTCACTGTGAATATCCACCCACCATCACAGAGTCTAAGAGCAATGAAGCCACCACAGGACGAC
AAGCTTCCTCAAATGTGAAGCCTCAGCGGTGCCTGCACCTGACTTTGAGTGGTACCGGGATGACACCAG
GATAAACAGTGCAAACGGCCTTGAGATTAAGAGCACTGAGGGCCAGTCTCCCTGACGGTGACCAACGTC
ACTGAGGAACACTACGGCAACTATACCTGTGTGGCTGCCAACAAGCTCGGCGTCACCAATGCCAGCCTAG
TCCTTTTCAGACCGGGTTCGGTGAAGGAATCAACGGATCCATCAGTCTGGCCGTACCACTGTGGCTGCT
GGCAGCGTCCCTGTTCTGCCTTCTCAGCAAATGT

ACGCGTACGCGGCCGCTCGAGCAGAAACTCATCTCAGAAGAGGATCTGGCAGCAAATGATATCCTGGATT
ACAAGGATGACGACGATAAGGTTTAA



[View online »](#)

Protein Sequence: >RR206865 representing NM_017242
Red=Cloning site Green=Tags(s)

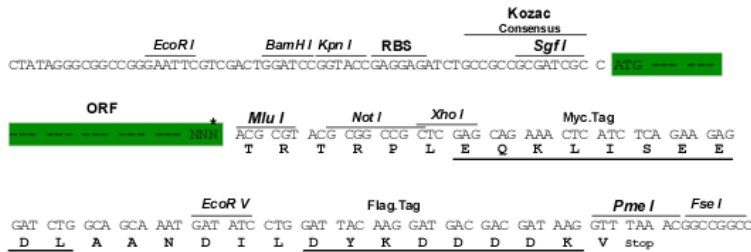
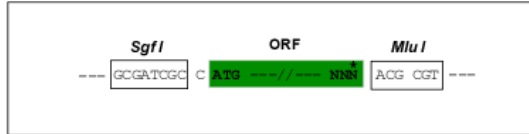
MVGRVQPDRKQLPLVLLRLLCLLPTGLPVRSVDFNRGTDNITVRQGDTAILRCVVEDKNSKVAVLNRSGI
 IFAGHDKWLDPRVELEKRHALEYSLRIQKVDVYDEGSYTCVSVQTHPEPKTSQVYLIVQVPPKISNISD
 VTVNEGSNVTLCMANGRPEPVIITWRHLTPLGREFEGEEYEILGITREQSGKYECKAANEVSSADVQK
 VKVTVNYPPPTITESKSNEATTGRQASLKCEASAVPAPDFEYRDDTRINSANGLEIKSTEGQSSLTVTNV
 TEEHYGNYTCVAANKLGVTNASLVLFRRGSRVINGISLAVPLWLLAASLFCLLSKK

TRTRPLEQKLISEEDLAANDILDYKDDDDKV

Restriction Sites: SgfI-MluI

Cloning Scheme:

Cloning sites used for ORF Shuttling:



* The last codon before the Stop codon of the ORF

ACCN: NM_017242

ORF Size: 1014 bp

OTI Disclaimer: The molecular sequence of this clone aligns with the gene accession number as a point of reference only. However, individual transcript sequences of the same gene can differ through naturally occurring variations (e.g. polymorphisms), each with its own valid existence. This clone is substantially in agreement with the reference, but a complete review of all prevailing variants is recommended prior to use. [More info](#)

OTI Annotation: This clone was engineered to express the complete ORF with an expression tag. Expression varies depending on the nature of the gene.

Components: The ORF clone is ion-exchange column purified and shipped in a 2D barcoded Matrix tube containing 10ug of transfection-ready, dried plasmid DNA (reconstitute with 100 ul of water).

Reconstitution Method:

1. Centrifuge at 5,000xg for 5min.
2. Carefully open the tube and add 100ul of sterile water to dissolve the DNA.
3. Close the tube and incubate for 10 minutes at room temperature.
4. Briefly vortex the tube and then do a quick spin (less than 5000xg) to concentrate the liquid at the bottom.
5. Store the suspended plasmid at -20°C. The DNA is stable for at least one year from date of shipping when stored at -20°C.

RefSeq: [NM_017242.1](#), [NP_058938.1](#)

RefSeq Size: 1218 bp

RefSeq ORF: 1017 bp

Locus ID: 29561

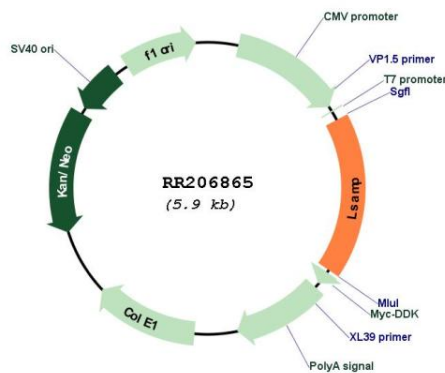
UniProt ID: [Q62813](#)

Cytogenetics: 11q21

MW: 37.3 kDa

Gene Summary: immunoglobulin (Ig) superfamily member; may act as a recognition molecule for the formation of neuronal connections [RGD, Feb 2006]

Product images:



Circular map for RR206865