

## Product datasheet for **RR206862**

### Mab21I2 (NM\_001109391) Rat Tagged ORF Clone

#### Product data:

**Product Type:** Expression Plasmids  
**Product Name:** Mab21I2 (NM\_001109391) Rat Tagged ORF Clone  
**Tag:** Myc-DDK  
**Symbol:** Mab21I2  
**Vector:** pCMV6-Entry (PS100001)  
**E. coli Selection:** Kanamycin (25 ug/mL)  
**Cell Selection:** Neomycin  
**ORF Nucleotide Sequence:** >RR206862 representing NM\_001109391  
Red=Cloning site Blue=ORF Green=Tags(s)

CTATAGGGCGGCCGGAATTCGTCGACTGGATCCGGTACCGAGGAGATCTGCCGCCGCGATCGCCGGCGC  
GCC

ATGATCGCCGCTCAGGCCAAGCTGGTTTACCAGCTCAATAAATACTACACCGAGCGCTGCCAGGCGCGCA  
AGGCTGCGATCGCCAAGACCATCCGAGAAGTCTGCAAGGTAGTGTGGATGTGCTGAAGGAAGTGAAGT  
GCAGGAGCCGCGCTTCATCAGTCTCTGAGCGAGATTGACGCCGCTACGAAGGGCTGGAAGTCATCTCT  
CCCACCGAGTTCGAGGTGGTACTCTACCTCAACCAAATGGGAGTCTTCAACTTCGTGGACGACGGATCTC  
TGCCCGGCTGCGCAGTGCTCAAATAAGCGATGGGCGGAAGCGGAGCATGTCTCTTTGGTTCGAGTTCAT  
CACAGCGTCTGGTTACCTCTCTGCACGCAAGATCCGCTCGCGTTTCCAGACATTGGTAGCCAGGCGGTG  
GACAAGTGCAGCTACCGGACGTGGTCAAGATGATCGCCGACACTAGCGAGGTCAAGTTGCGCATCAGGG  
AGCGCTACGTGGTGCAAATCACCCAGCGTTCAAGTGCACCGGGATCTGGCCTCGCAGCGCGGCACAGTG  
GCCTATGCCCCACATCCCCTGGCCCGGCCCAATCGGGTGGCGGAGGTCAAGGCCGAAGGGTTCACTTG  
CTCTCAAAGGAGTCTACTCGTACTGGCAAGCAGAGCTCCGCAGAAAGCGACGCTGGGTGCTGCAGT  
TCGGTGAAGGCTGAGAACCCTTGTGATGGGCGGCTGTAGAAACAAGTGCCTCTCCGTGCTGAAGACGCT  
GCGGGACCGCCACCTGGAGCTGCCGGGCCAGCCGCTCAATAACTACCACATGAAGACGCTGCTGCTGATC  
GAGTGCAGAAACACCCGAGGAAACGGACTGGGACGAGGCTTGCTGGGCGACCGTCTGAACGGATCC  
TGCTACAGCTCATCTTTGCCTGCAATGCCGCCGCTGCCCTCACTACTTTTTGCCAACCTCGACCTCTT  
CCAGGGCAAGCCCACTCGGCCCTGGAGAGCGCTGCCAAGCAGACCTGGAGATTGGCCAGGGAAATCCTC  
ACCAATCCCAAAGCTTGGACAACTA

ACGCGTACGCGGCCGCTCGAGCAGAACTCATCTCAGAAGAGGATCTGGCAGCAAATGATATCCTGGATT  
ACAAGGATGACGACGATAAGGTTTAA



[View online »](#)

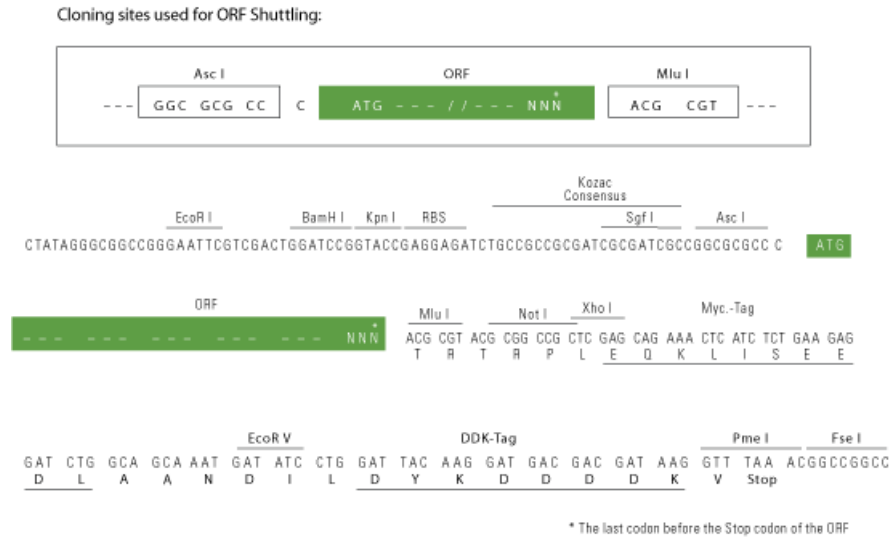
**Protein Sequence:** >RR206862 representing NM\_001109391  
Red=Cloning site Green=Tags(s)

MIAAQAKLVYQLNKYYTERCQARKAAIAKTIREVCKVVSVDLKEVEVQEPRFISSLSEIDARYEGLEVIS  
 PTEFEVVLVLNQMVFNFVDDGSLPGCAVLKLSGGRKRSMSLWVEFITASGYLSARKIRSRFOTLVAQAV  
 DKCSYRDVVKMIADTSEVKLRIRERYVVQITPAFKCTGIWPRSAQWPMPHIPWPGPNRVAEVKAEGFNL  
 LSKECYSLTGKQSSAESDAWVLQFGEAENRLMGGCRNKCLSVLKTLRDRHLELPGQPLNNYHMKLLLLY  
 ECEKHPRETDWDEACLGDRNLGILLQLISCLQCRRCPHYFLPNLDFLQGKPHSALESAAKQTWRLAREIL  
 TNPKSLDKL

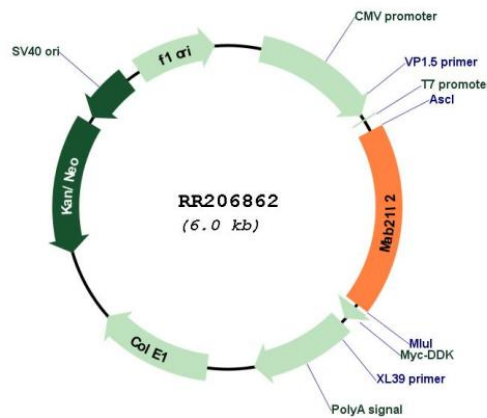
TRTRPLEQKLISEEDLAANDILDYKDDDDKV

**Restriction Sites:** AscI-MluI

**Cloning Scheme:**



**Plasmid Map:**



**ACCN:** NM\_001109391

<b>ORF Size:</b>	1077 bp
<b>OTI Disclaimer:</b>	The molecular sequence of this clone aligns with the gene accession number as a point of reference only. However, individual transcript sequences of the same gene can differ through naturally occurring variations (e.g. polymorphisms), each with its own valid existence. This clone is substantially in agreement with the reference, but a complete review of all prevailing variants is recommended prior to use. <a href="#">More info</a>
<b>OTI Annotation:</b>	This clone was engineered to express the complete ORF with an expression tag. Expression varies depending on the nature of the gene.
<b>Components:</b>	The ORF clone is ion-exchange column purified and shipped in a 2D barcoded Matrix tube containing 10ug of transfection-ready, dried plasmid DNA (reconstitute with 100 ul of water).
<b>Reconstitution Method:</b>	<ol style="list-style-type: none"><li>1. Centrifuge at 5,000xg for 5min.</li><li>2. Carefully open the tube and add 100ul of sterile water to dissolve the DNA.</li><li>3. Close the tube and incubate for 10 minutes at room temperature.</li><li>4. Briefly vortex the tube and then do a quick spin (less than 5000xg) to concentrate the liquid at the bottom.</li><li>5. Store the suspended plasmid at -20°C. The DNA is stable for at least one year from date of shipping when stored at -20°C.</li></ol>
<b>RefSeq:</b>	<a href="#">NM_001109391.1</a> , <a href="#">NP_001102861.1</a>
<b>RefSeq Size:</b>	3085 bp
<b>RefSeq ORF:</b>	1080 bp
<b>Locus ID:</b>	680102
<b>Cytogenetics:</b>	2q34
<b>MW:</b>	40.9 kDa