

Product datasheet for **RR206860**

Tnni3 (NM_017144) Rat Tagged ORF Clone

Product data:

Product Type: Expression Plasmids
Product Name: Tnni3 (NM_017144) Rat Tagged ORF Clone
Tag: Myc-DDK
Symbol: Tnni3
Synonyms: cTNI; Tnl
Mammalian Cell Selection: Neomycin
Vector: pCMV6-Entry (PS100001)
E. coli Selection: Kanamycin (25 ug/mL)
ORF Nucleotide Sequence: >RR206860 representing NM_017144
Red=Cloning site Blue=ORF Green=Tags(s)

TTTTGTAATACGACTCACTATAGGGCGCCGGGAATTCGTCGACTGGATCCGGTACCGAGGAGATCTGCC
GCC**CGATCGCC**

ATGGCGGATGAGAGCAGCGATGCGGCTGGGGAACCCAGCCGGCGCTGCTCCTGTCCGACGTGCTCCT
CGGCCAACTACCGAGCCTATGCCACCGAGCCACATGCCAAGAAAAAGTCTAAGATCTCCGCTCCAGAAA
ACTTCAGTTGAAGACTCTGATGCTGCAGATTGCGAAGCAGGAGATGGAGCGTGAGGCAGAGGAGCGACGT
GGAGAGAAGGGCCGCTTCTGAGCACGCGTTGCCAGCCCTTGGTGTGGATGGGCTGGGCTTTGAAGAGC
TTCAGGACCTATGCCGCGAGCTTCACGCTCGTGTGACAAAGTGGATGAAGAGAGATACGACGTGGAAGC
AAAAGTCACCAAGAACATCACTGAGATTGCAGATCTGACCCAGAAGATCTATGACCTGCGTGGCAAGTTT
AAGCGGCCACTCTCCGAAGAGTGAGAATCTCAGCAGATGCCATGATGCAGGCACTACTGGGGACCCGGG
CCAAGGAATCCTTGGACCTGAGGGCCACCTCAAGCAGGTGAAGAAGGAGGACATTGAGAAGGAAAACCG
GGAGGTGGGAGACTGGCGAAGAATATCGATGCACTAAGTGAATGGAAGGCCGAAAGAAAAAGTTTGAG
GGC

AG**CGGACCG**ACGCGTACGCGGCCGCTCGAGCAGAAACTCATCTCAGAAGAGGATCTGGCAGCAAATGATATCC
TGGATTACAAGGATGACGACGATAAGGTTTAA



[View online »](#)

Protein Sequence: >RR206860 representing NM_017144
Red=Cloning site Green=Tags(s)

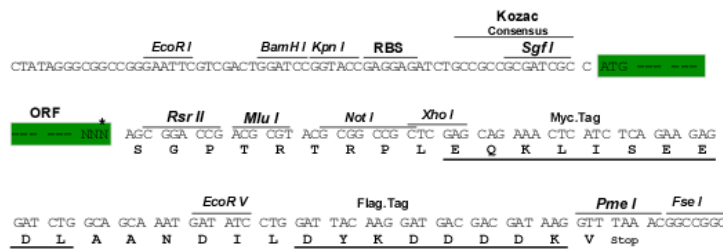
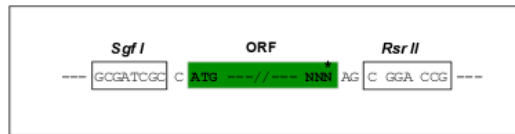
MADESSDAAGEPQPAPAPVRRRSSANYRAYATEPHAKKSKISASRKLQLKTLMLQIAKQEMEREAEERR
 GEKGRVLSTRCQPLVLDGLGFEEQLDLRQLHARVDKVEERYDVEAKVTKNITEIADLTQKIYDLRGKF
 KRPTLRRVRISADAMMQALLGTRAKESLDLRAHLKQVKKEDIKENREVGDRKNIDALSGMEGRKKKFG

SGPTRTRPLEQKLI SEEDLAANDILDYKDDDDKV

Restriction Sites: SgfI-RsrII

Cloning Scheme:

Cloning sites used for ORF Shuttling:



* The last codon before the Stop codon of the ORF

ACCN: NM_017144

ORF Size: 633 bp

OTI Disclaimer: The molecular sequence of this clone aligns with the gene accession number as a point of reference only. However, individual transcript sequences of the same gene can differ through naturally occurring variations (e.g. polymorphisms), each with its own valid existence. This clone is substantially in agreement with the reference, but a complete review of all prevailing variants is recommended prior to use. [More info](#)

OTI Annotation: This clone was engineered to express the complete ORF with an expression tag. Expression varies depending on the nature of the gene.

Components: The ORF clone is ion-exchange column purified and shipped in a 2D barcoded Matrix tube containing 10ug of transfection-ready, dried plasmid DNA (reconstitute with 100 ul of water).

Reconstitution Method:

1. Centrifuge at 5,000xg for 5min.
2. Carefully open the tube and add 100ul of sterile water to dissolve the DNA.
3. Close the tube and incubate for 10 minutes at room temperature.
4. Briefly vortex the tube and then do a quick spin (less than 5000xg) to concentrate the liquid at the bottom.
5. Store the suspended plasmid at -20°C. The DNA is stable for at least one year from date of shipping when stored at -20°C.

RefSeq: [NM_017144.2](#), [NP_058840.1](#)

RefSeq Size: 829 bp

RefSeq ORF: 636 bp

Locus ID: 29248

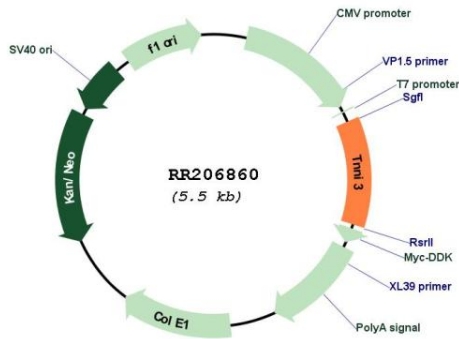
UniProt ID: [P23693](#)

Cytogenetics: 1q12

MW: 24.2 kDa

Gene Summary: cardiac isoform of troponin I, which is a subunit of the troponin complex; inhibits actomyosin ATPase activity in muscle contraction [RGD, Feb 2006]

Product images:



Circular map for RR206860