

Product datasheet for **RR206856**

Itga11 (NM_001108156) Rat Tagged ORF Clone

Product data:

Product Type: Expression Plasmids
Product Name: Itga11 (NM_001108156) Rat Tagged ORF Clone
Tag: Myc-DDK
Symbol: Itga11
Vector: pCMV6-Entry (PS100001)
E. coli Selection: Kanamycin (25 ug/mL)
Cell Selection: Neomycin
ORF Nucleotide Sequence: >RR206856 representing NM_001108156
Red=Cloning site Blue=ORF Green=Tags(s)

TTTTGTAATACGACTCACTATAGGGCGGCCGGGAATTCGTCGACTGGATCCGGTACCGAGGAGATCTGCC
GCC**CGATCGCC**

ATGGACTTGCCAGGGGCTTCTGGTGGCCTGGACCCCTCAGCCTCTGGCCAGGATTCACGGACACCTTCA
ACATGGATACCAGGAATCCCGGGTCATCGCTGGTCCCAGTGCTGCTTTCTTTGGCTACACAGTACAGCA
GCACGATATCAGTGGCAAGAAGTGGTTGGTTGGTGGCCCTCAGTGGAAACCAATGGCCACCAGAAGACA
GGAGATGTATACAAGTGTCCAGTAACCCAGGGCAACTGCACCAAACCTCAACCTGGGCAGGGTCACCTGT
CCAATGCCTGCAGCCCTCTCTGGTCAACAGAGTGTGGAAGCTCCTACTACACCACTGGCATGTGCTCCCG
GGTCAACTCCAATTCTCAGATTCTCCAAGACGGTGGCCCGGCACTTCAAGGTGCCAGACTTATATGGAC
ATTGTCATTGTCTGGACGGCTCCAACAGCATCTACCCCTGGGTGGAGGTCCAACACTTCTCATCGAGA
TCCTGACAAAGTCTACATCGGCCCTGGCCAGATCCAGGTCCGGAATAGTTCAGTATGGAGAAGATGCCGT
CCATGAGTTCCACCTAACGACTACAACTGTAAAAGATGTGGTGGAGCCGCCAGCCACATTGAACAG
AGAGGAGGACTGAAACCCGCACGGCATTGGCATTGAATTTGCACGCTCAGAGGCTTCCAGAAGGGCG
GAAGGAAAGGGCCAAGAAAGTAATGATTGTCATCACGGACGGGAATCCACGACAGCCAGACCTGGA
GAAGGTGATCCGCAAGCGAGAAGGACAACGTGACCAGATACGCTGTGGCCGTCTTGGGCTACTACAAC
CGCAGGGGATCAATCCAGAGACTTTTCTAAAACGAAATCAAATACATCGCCAGTGACCCTGACGACAAGC
ATTTCTCAATGTACGGATGAGGCGGCCTTGAAGGACATTGTTGATGCCCTTGGGGACAGGATCTTCAG
CTTGAAGGCACCAACAAGAATGAAACCTCTTTGGTCTGGAGATGTCCGACAGCCGGCTTTTCTCGCAT
GTGGTAGAGGATGGGGTCTGCTGGGAGCTGTGGGAGCCTATGACTGGAACGGGGCAGTGTGAAGGAGA
CAAGTGCAGGAAAGGTGATTCTCTCCGAGAGTCTACCTAAGGAGTCCCGGAGGAGTTGAAGAACCA
CGCCGCATACCTAGGGTACACGGTGACATCGGTTGTGCTCCTCAAGCAGGGGCGCGTGTATGTGGCTGGA
GCCCCAGGTTCAACCATACTGGCAAGGTCATTCTGTTTCAGTATACACCAACCGGAGCCTCACCATCC
ACCAGGCTCTTCGGGGCAGCAGATAGGCTCCTACTTCGGGAGTGAGATCACCTCGGTGGACATCAATAA
TGACAGAGTGACAGATGTCTGTGGTGGGCGCACCCATGTAATTCAGCGAGGGCCGAGAGAGAGGCAAG
GTGTATGTCTAACCTGAGACAGAACCGGTTTGTTTTAAATGGCACTCTGAAGGATTCCACAGCTACC
AGAACGCCGGTTCGGGTGATGCTCCGTTCAAGACCTCAACCAAGATTCCTACAATGACGTGGT
GGTGGGGCCCTCTGGAGGACAGCCACAGAGGGCCATCTACATCTCCATGGCTTCAAACCAACATC



[View online »](#)

CTGAAGAAGCCCGTGCAGAGAATATCAGCCTCAGAGCTGGCTCCCGGCTTGCAGCATTTTGGCTGCAGCA
 TCCACGGACAACCTGGACCTCAATGAGGACGGGCTTGTGGACCTAGCAGTGGGCGCCCTGGGCAACGCTGT
 GGTTTTGTGGGCGCTCCCGTAGTTCAAGTCAACGCCAGCCTCCACTTTGAGCCTTCCAAGATCAACATC
 TTCCACAAGGACTGCAAGCGCAATGGCAGGGATGCCACCTGCCTGGTGCCTTCTCTGCTTCGGACCTA
 TCTTCTGGCACCCTTCCACACAGCAACCGTCGGTAAACCAGCCTCCCTGGGCGGCATCAGGTACAA
 TGCAACCATGGATGAGAGACGGTATATGCCACGGGCACATCTGGATGAGGGTGCAGACCAGTTACCAAC
 AGGGCTGTCTACTCTTCTGGTCAGGAACACTGTCAAAGGATCAACTCCACCTCTGGACATGCCG
 ACTACGTGAAGCCAGTGGCCTTCTCTGTGGAATATTCCCTAGAGGACCCTGACCATGGCCCCATGCTGGA
 CAACGGCTGGCCCACTACACTCAGAGTGTGCGTGCCTTCTGGAATGGCTGTAATGAGGATGAACACTGT
 GTCCTGACCTTGTACTGGATGCTCGAAGTGATCTGCCACTGCCATGGAGTACTGCCAACAGGTGCTGA
 GGAGGCCGGCCAGGACTGCTCCAGTTACACACTGTCTTCGACACCCTGTCTTCATCATAGAGAGCAC
 ACGGCGCCGGGTAGCAGTAGAGGCCAGCTGGAGAACAGAGGAGAGAATGCTTACAGTGCAGTCTCAAT
 ATCTCCAGTCAGAGAACCTGCAGTTTCCAGCCTGATCCAGAAGGATGACTCAGACAACAGCATCGAGT
 GTGTGAATGAGGAGAGGGGCTACACAAGAAAGTCTGCAACGTCAGTTACCCCTTCTTCAGGCCAAAGGC
 CAAGGTGGCTTTCGGCTGGATTTCCAGTTTCAGCAAGTCTGTGTTCTGCACCATCTTCAGATCCATCTG
 GGTGCCGCGACGACAGTCACGAGCAGGACAGCACCAGATGACAACACGGCCCTCTTCGCTTCCACC
 TCAAATATGAAGCAGACGCTCTTTTACCAGAAGCAGCAGCCTGAGCCACTTCGAGGTCAAGGCCAACAG
 CTCGCTGGAGAGCTATGATGGCATCGGGCTCCATTCAACTGTGTTTTCAAGGTGCAAGACTGGGCTTT
 TTCCCATCCACGGGTGATGATGAAGATTACTGTGCCATTGCCACCAGGGGTGCCAACCCGCTGCTGA
 TGCTGAAGGACTTCTTACAGACCAGGTCAACACATCTGTAACATCTGGGGGAACAGCAGAGTACCG
 GAGTACCCCAACTGAGGAAGACCTGAGCCATGCCCCACAGAGGAATCACAGCAACTCCGATGTGGTCTCC
 ATCATCTGCAATGTGAGACTAGCCCCAACCCAGGAGACCAGCTTCTACCTGGTGGGAACCTGTGGCTGA
 TGTCCTGAAAGCACTCAAGTACAGGTCTATGAAGATCACAGTCAACGCCCTTCGACAGGCAAGTCCA
 CAGCCCTTCTATCTTCCGAGAGGAGGCCAGTCCGAGGTCAGCTTGTGAGATCTCCAAGCAAGAAGAC
 TGGCAGGTCCCCATCTGGATCATCGTGGCAGCTCTCTGGGAGGCTCTTGTCTGCTGGCCCTGCTGGTCC
 TGGCACTGTGGAAGCTTGGTTTCTTTAAAAGTGCCAAGCGCAAGAGGGAGCCAGCCTGGCCCCGCTCC
 CAAAGAGCTGGAG

ACGCGTACGCGGCCGCTCGAGCAGAACTCATCTCAGAAGAGGATCTGGCAGCAATGATATCCTGGATT
 ACAAGGATGACGACGATAAGGTTTAA

Protein Sequence:

>RR206856 representing NM_001108156
 Red=Cloning site Green=Tags(s)

MDLPRGFLVAWTLVSLWPGFTDTFNMTRNPRVIAGPSAAFFGYTVQQHDISGKKWLVVVGAPLETNGHQKT
 GDVYKCPVTQGNCTKLNLRVTLNACSPWSHECGSSYYTGMCSRVSNSFRFSTVAPALQRCQTYMD
 IVIVLDGSNSIYPWVEVQHFLIEILTKFYIGPGQIQVGIQVGEDAVHEFHLNDYKSVKDVVEAASHIEQ
 RGGTETRTAFGIEFARSEAFQKGRKGAKKVMIVITDGEHSDSPDLEKVIHQSEKDNVTRYAVAVLGYNN
 RRGINPETFLNEIKYIASDPDDKHFFNVTDEAALKDIVDALGDRIFSLEGTNKNETSFGLEMSQTFSSH
 VVEDGVLLGAVGAYDWNQAVLKETSAGKVIPLRESYLKEFPEELKNHAAYLGYTVTSVVSQKGRVYVAG
 APRFNHTGKVIILFSIHTNRSLTIHQALRGEQIGSYFGSEITSVDINNDRVTDVLLVGAPMYFSEGRERGK
 VVYVNLQRNRFVNGTLKDSHSYQNAFSGCIASVQDLNQDSYNDVVVVGAPLEDHRGAIYIFHGFQTNL
 LKKPVQRISASELAPGLQHFQCSIHGQLDLNEDGLVDLAVGALGNVAVLWARPVVQINASLHFEPKINI
 FHKDCKRNGRDATCLAAFLCFGPFLAPHFHTATVGKPSLGGIRYNATMDERRYMPRAHLDEGADQFTN
 RAVLLSSGQEHQQRINFHVLDTADYVVPVAFSVEYSLEDPDHGPMLDNGWPTTLRVSVFPWNGCNEDEHC
 VPDVLVDARSDLPAMEYQCVLRRAQDCSSYTLSDFTTVFIIESTRRRVAVEATLENRGENAYSAVLN
 ISQSENLFASLIQKDDSDNSIECVNEERRLHKVKNVSYPPFRAKAKVAFRLDFEFKSVFLHHLQIHL
 GAGSDSHEQDSTADDNTALLRFHLKYEADVLFTRSSSLSHFEVKANSLSYDGI GPPFNCVFKVQNLGF
 FPIHGVMKITVPIATRGGNRLMLKDFFTDQVNTSCNIWGNSTEYRSTPTEEDLSHAPQRNHSNDVVS
 IICNVRLAPNQETSFLVGNLWMLSKALKYRSMKITVNAALQRQFHSPFIFREEDPSRQVTFEISKQED
 WQVPIWIIVGSLLGLLLLALLVLALWKLGFKSAKRKREPSLGPVPEKE

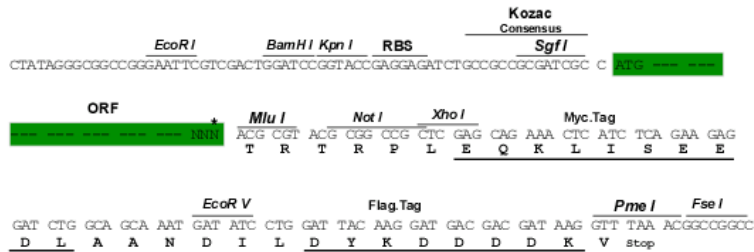
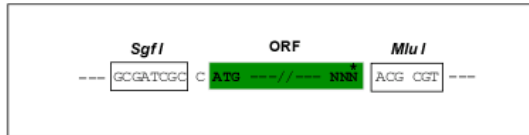
TRTRPLEQKLI SEEDLAANDILDYKDDDDKV

Restriction Sites:

Sgfl-MluI

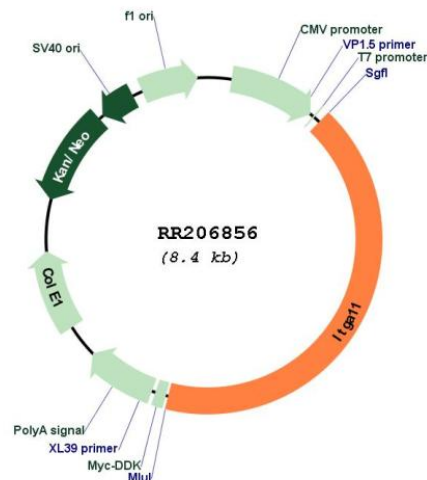
Cloning Scheme:

Cloning sites used for ORF Shuttling:



* The last codon before the Stop codon of the ORF

Plasmid Map:



ACCN: NM_001108156

ORF Size: 3513 bp

OTI Disclaimer: The molecular sequence of this clone aligns with the gene accession number as a point of reference only. However, individual transcript sequences of the same gene can differ through naturally occurring variations (e.g. polymorphisms), each with its own valid existence. This clone is substantially in agreement with the reference, but a complete review of all prevailing variants is recommended prior to use. [More info](#)

OTI Annotation: This clone was engineered to express the complete ORF with an expression tag. Expression varies depending on the nature of the gene.

Components: The ORF clone is ion-exchange column purified and shipped in a 2D barcoded Matrix tube containing 10ug of transfection-ready, dried plasmid DNA (reconstitute with 100 ul of water).

Reconstitution Method:

1. Centrifuge at 5,000xg for 5min.
2. Carefully open the tube and add 100ul of sterile water to dissolve the DNA.
3. Close the tube and incubate for 10 minutes at room temperature.
4. Briefly vortex the tube and then do a quick spin (less than 5000xg) to concentrate the liquid at the bottom.
5. Store the suspended plasmid at -20°C. The DNA is stable for at least one year from date of shipping when stored at -20°C.

RefSeq: [NM_001108156.1](#), [NP_001101626.1](#)

RefSeq Size: 4991 bp

RefSeq ORF: 3516 bp

Locus ID: 315744

Cytogenetics: 8q24

MW: 130.9 kDa