

Product datasheet for **RR206825**

Pla2g6 (NM_001005560) Rat Tagged ORF Clone

Product data:

Product Type:	Expression Plasmids
Product Name:	Pla2g6 (NM_001005560) Rat Tagged ORF Clone
Tag:	Myc-DDK
Symbol:	Pla2g6
Synonyms:	iPla2; PNPLA9
Mammalian Cell Selection:	Neomycin
Vector:	pCMV6-Entry (PS100001)
E. coli Selection:	Kanamycin (25 ug/mL)



[View online »](#)

ORF Nucleotide
Sequence:

>RR206825 representing NM_001005560
 Red=Cloning site Blue=ORF Green=Tags(s)

TTTTGTAATACGACTCACTATAGGGCGGCCGGGAATTCGTCGACTGGATCCGGTACCGAGGAGATCTGCC
 GCC**CGGATCGCC**

ATGCAGTTCTTTGGACGCCTCGTTAACACCCTCAGTAGTGTACCAACTTGTCTCAAACCCATTCCGGG
 TAAAGGAGGTGTCTTGGCTGACTATGCCTCAAGTGAACGTGTTTCGAGAGGAAGGCAGCTGATCCTGTT
 GCAGAATGCTTCCAATCGTACCTGGGACTGTGTCTGGTCAGCCCTAGGAACCCACAGAGTGGCTTCCGA
 CTCTTCCAACCTGGAGTCAGAGGCAGACGCCCTGGTGAACCTCCAGCAGTATTCTCCAGCTGCCACCGT
 TCTATGAGAGCTCTGTGCAGGTCTGCATGTGGAGGTGCTGCAGCACCTGACGGACCTCATTGGAACCA
 CCCCAGCTGGACAGTGACGCACCTGGCCGTGGAACCTGGCATTCCGGGAGTGTTCATCACAGCCGCATC
 ATCAGTGCGCCAACAGCACAGAGAATGAGGAGGGCTGTACCCACTACATCTGGCCTGCCGAAGGGTG
 ACAGTGAGATTCTGGTGGAGTTGGTACAGTACTGCCACGCCAGATGGATGCTACTGACAACAAAGGAGA
 GACCGCCTTCCATTATGTGTGCAAGGGGACAATCCCCAGGTGCTACAGCTCCTAGGAAAGAAATGCCTCA
 GCCGGCCTGAACCAAGGTGAACAACCAAGGGCTGACGCCGCTGCACCTGGCCTGCCAGATGGGGAAGCAGG
 AGATGGTGCCTGTCTGTCTGCTCTGCAATGCCCGCTGCAACATCATGGGGCCCGTGGCTTCCCCATCCA
 CACAGCCATGAAGTTTTCCAGAAGGGGTGTGCTGAAATGATTATCAGCATGGACAGTAACCAGATCCAC
 AGCAAGGATCCTCGTATGGAGCCAGCCCGCTCCACTGGGCAAGAACGCTGAGATGGCCGAATGCTTC
 TGAAGAGGGGCTGTGACGTGGACAGCACAAGTGCCTCGGGGAACACAGCCCTGCAGTGGCGGTGACCGG
 CAACCGCTTTGACTGTGTATGGTGTGCTGACCTATGGGGCAACGCAGGTGCCGAGGAGAGCATGGG
 AACACACCACTGCATCTGGCCATGTGAAAGATAACATGGAGATGGTCAAAGCCCTCATTGTATTTGGGG
 CAGAAGTAGACACCCCGAATGACTTTGGGGAGACTCCTGCATTCATAGCTTCCAAGATCAGCAAGCTGAT
 TACCAGGAAGGCCCTCTTGACTCTGTGAAACCGGTGGGGCCGACTACCACTTCCATTACACAAGGG
 GTCTCCACGGAGCAGAGCTCTGCAGCTGGACCTCACCCCTTCTTCTCCCTGGACAGAACTCAGCCTCCAA
 CGATCAGCTTAAACAACCTAGAGCTTCAAGACCTCATGCCCGTCTCCCGAGCCCGAAGCCAGCGTTCAT
 CCTGAGCTCCATGAGGGATGAGAAGCGAAGCCATGACCACCTGCTCTGCTTGGATGGAGGGGGCGTGAAG
 GGCCTGGTCATCATCCAGCTTCTCATTGCCATTGAGAAGGCCCTCAGGTGTGGCTACCAAGGACCTTTCCG
 ACTGGGTGGCAGGAACCAGCACAGGCGGCATCCTGGCCCTGGCCATTCTACACAGTAAATCCATGGCCTA
 TATGCGTGGCGTGTACTCCGTATGAAGGATGAGGTGTTTCGGGGCTCACGGCCCTATGAGTCTGGGCC
 CTGGAGGAGTTCTGAAGCGTGAGTTTGGGGAGCACACCAAGATGACAGATGTCAAGAAACCAAGGTGA
 TGCTGACAGGGACTGTGACAGCCGGCAGCCAGCAGAGCTCCACCTCTTCCGGAATTACGACGCCCCAGA
 GGCCGTTCCGGAAACCTCGCTGTACCCCAAACATTAACCTGAAGCCGCCACCCAGCCTGCAGACCAGTTA
 GTATGGCGGGCAGCCCGGAGCAGTGGGGCAGCCCAACCTATTTCCGGCCCAATGGACGCTTCTTGGATG
 GTGGGCTGCTGGCCAACAACCCACACTGGATGCCATGACTGAAATCCATGAGTACAATCAGGATATGAT
 CCGCAAGGGCCAGGGCAACAAGGTGAAGAACTCTCCATAGTCGTGTCTCTGGGGACAGGAAAGTCCCT
 CAAGTGCCTGTAACTGTGTAGATGTCTTTCGTCCAGCAACCTTGGGAACTGGCCAAGACTGTTTTTG
 GAGCCAAGGAACTGGGCAAGATGGTGGTGGACTGTTGCACAGATCCAGATGGGCGGGCTGTGGATCGTGC
 CCGGGCCTGGTGTGAGATGGTCGGTATCCAGTACTCAGGCTGAACCCCAAGTGGCTCAGACATCATG
 CTGGACGAGGTCAGTGATGCAGTGTGGTCAACGCCCTCTGGGAGACCGAGGTCTACATCTATGAGCACC
 GGGAGGAGTTCCAGAAGCTTGTCCAGTCTGCTATCTCCC

ACGCGTACGCGGCCGCTCGAGCAGAACTCATCTCAGAAGAGGATCTGGCAGCAATGATATCCTGGATT
 ACAAGGATGACGACGATAAGGTTTAA

Protein Sequence: >RR206825 representing NM_001005560
 Red=Cloning site Green=Tags(s)

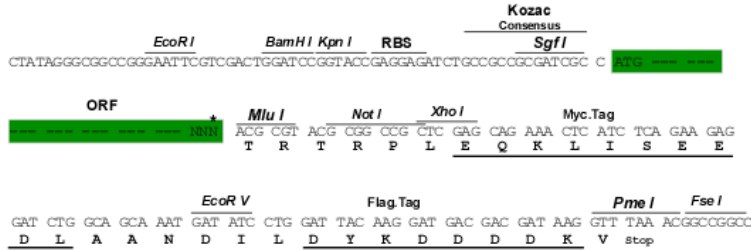
MQFFGRLVNTLSSVTNLFSPFRVKEVSLADYASSERVREEQQLILLQNASNRTWDCVLVSPRNPQSGFR
 LFQLESEADALVNFQYSSQLPPFYESSVQVLHVEVLQHLTDLIRNHPSWTVTHLAVELGIRECFHHSRI
 ISCANSTENEEGCTPLHLACRKGDSEILVELVQYCHAQMDVTDNKGETAFHYAVQGDNPQVLQLLGKNAS
 AGLNQVNNQGLTPLHLACQMGKQEMVRVLLL CNARCNIMGPGGFPIHTAMKFSQKGAEMIISMDSNQIH
 SKDPRYGASPLHWAKNAEMARMLLKRGCDVDSTSASGNTALHVAVTRNRFDCVMVLLTYGANAGARGEHG
 NTPLHLAMSKDNMEMVKALIVFGAEVDTPNDFGETPAFIASKISKLITRKALLTLLKTVGADYHFFPIQG
 VSTEQSSAAGPHPPFFSLDRTQPPTISLNNLELQDLMVSRARKPAFILSSMRDEKRSHDHLLCLDGGGVK
 GLVIIQLLIAIEKASGVATKDLFDWVAGTSTGGILALAILHKSMAVMRGVYFRMKDEVFRGSRPYESGP
 LEEFLKREFGEHTKMTDVKKPKVMLTGTLSDRQPAELHLFRNYDAPEAVREPRCTPNINLKPPTQPADQL
 VWRAARSSGAAPTYFRPNRFLDGGLLANNPTLDAMTEIHEYNQDMIRKGGQGNKVKKLSIVVSLGTGKSP
 QVPVTCVDVFRPSNPWELAKTVFGAKELGKMVDCCTDPDGRAVDRARAWCEMVGIQYFRLNPQLGSDIM
 LDEVSDAVLVNALWETEVIYEHREEFQKLVQLLLSP

TRTRPLEQKLI SEEDLAANDILDYKDDDDKV

Restriction Sites: Sgfl-Mlul

Cloning Scheme:

Cloning sites used for ORF Shuttling:



* The last codon before the Stop codon of the ORF

- ACCN:** NM_001005560
- ORF Size:** 2421 bp
- OTI Disclaimer:** The molecular sequence of this clone aligns with the gene accession number as a point of reference only. However, individual transcript sequences of the same gene can differ through naturally occurring variations (e.g. polymorphisms), each with its own valid existence. This clone is substantially in agreement with the reference, but a complete review of all prevailing variants is recommended prior to use. [More info](#)
- OTI Annotation:** This clone was engineered to express the complete ORF with an expression tag. Expression varies depending on the nature of the gene.
- Components:** The ORF clone is ion-exchange column purified and shipped in a 2D barcoded Matrix tube containing 10ug of transfection-ready, dried plasmid DNA (reconstitute with 100 ul of water).

Reconstitution Method:

1. Centrifuge at 5,000xg for 5min.
2. Carefully open the tube and add 100ul of sterile water to dissolve the DNA.
3. Close the tube and incubate for 10 minutes at room temperature.
4. Briefly vortex the tube and then do a quick spin (less than 5000xg) to concentrate the liquid at the bottom.
5. Store the suspended plasmid at -20°C. The DNA is stable for at least one year from date of shipping when stored at -20°C.

RefSeq: [NM_001005560.1](#), [NP_001005560.1](#)

RefSeq Size: 3100 bp

RefSeq ORF: 2424 bp

Locus ID: 360426

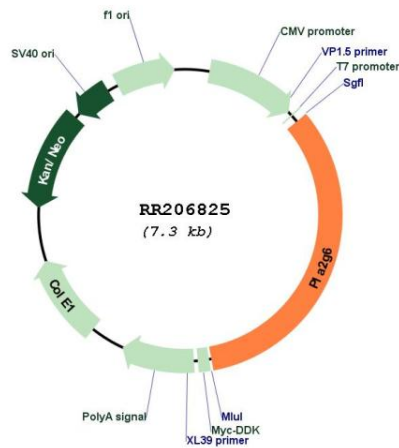
UniProt ID: [P97570](#)

Cytogenetics: 7q34

MW: 89.6 kDa

Gene Summary: has Ca²⁺ independent phospholipase A2 activity; may play a role in regulating transmembrane ionic fluxes in pancreatic beta cells [RGD, Feb 2006]

Product images:



Circular map for RR206825