

Product datasheet for **RR206788**

Ccndbp1 (NM_001013204) Rat Tagged ORF Clone

Product data:

Product Type:	Expression Plasmids
Product Name:	Ccndbp1 (NM_001013204) Rat Tagged ORF Clone
Tag:	Myc-DDK
Symbol:	Ccndbp1
Synonyms:	MGC109078
Vector:	pCMV6-Entry (PS100001)
E. coli Selection:	Kanamycin (25 ug/mL)
Cell Selection:	Neomycin
ORF Nucleotide Sequence:	>RR206788 representing NM_001013204 Red=Cloning site Blue=ORF Green=Tags(s)

TTTTGTAATACGACTCACTATAGGGCGGCCGGAATTCGTCGACTGGATCCGGTACCGAGGAGATCTGCC
GCC**CGGATCGCC**

ATGGCGAGCTCGACAACCCAGTCTCGTTCCTTGTCTCCTCTAGAGCAGCTCCGGCACTTAGCAGAGG
AGCTGCGGTGCTTCTGCTCGAGTACGGTTCGGCGAAGCCAGGAGACAGCCGAGGAATTAATCGAGA
GATGTTTTGGAGAAGACTCAATGAAGCAGCAATGAAAGTGTCTGGGAAGCCACTGTTCTGACCACACTC
TTCTCTAAAATCCATCGCCATCTCCACAGGAAACCCAGAGGATCTGTGAGCAAGTCCACATTGCCACTG
AGGAAGTAATTGCAGCATACTACACATTTCTAAGGATCAGGGAATCACCTGAGAAAGCTGGTACGAAA
TGCTGTCTGGACATCGTGGATGGCAGGCTCAGCTCCTGGATGCGCTCCTTGTCTCCATCTCAGAGC
CCTGAGAATGGTGACCTGATTTCTGCAATAGTGTCTCAGTTGCATGCCAACAGGTGGCTGAGATCCCAA
AAGATAACAAAGCTGCAGCCCTTTTGTGCTGACAAAGAGTGTGGATCTTGTGAAAGACGCTCATGAAGA
AATGGAGCAGGCCGTGGAAGAAATGTGACCCTTACTGTGGCCTCTTGGATGATTCTGAGGACAACCCGAC
AGCCACCATAATGAGGATGGTGTAGGGCTTCCCAGCAATCGGGACTCATACTGGTCAGAGGAAGATCAAG
CACTCATAACTCCGTGCCTTGCATTGGTGAGAGCTTCCCGAGCTTCCCTCAAGAAAATCCGGATCTTGGT
GGCTGAGAATGGAAGGAAGGATCAGGTCGCCAGCTGGATGACATTGTGGATATTTCTGATGAGATCAGC
CCCAGTGTGGATGACTTGTTTCTCAGCGTATATCCACCTGTGTGTACCTCACCTGCGGATCACTTCTG
CGAAACTGGTGTCTGTTTTAATAAAGGCTCTTGAGATTACAAAAGCAAGTACGTCGAGCCCCAGCCAGG
AGATAGCTGGATCCCTTTACTCATTAAATGCCGTTGACCATTGCATGGACAGAATTAAGGAGCTCACTCAG
CGTGCAGTTGAGCTG

ACGCGTACGCGGCCGCTCGAGCAGAACTCATCTCAGAAGAGGATCTGGCAGCAAATGATATCCTGGATT
ACAAGGATGACGACGATAAGGTTTAA



[View online »](#)

Protein Sequence: >RR206788 representing NM_001013204
 Red=Cloning site Green=Tags(s)

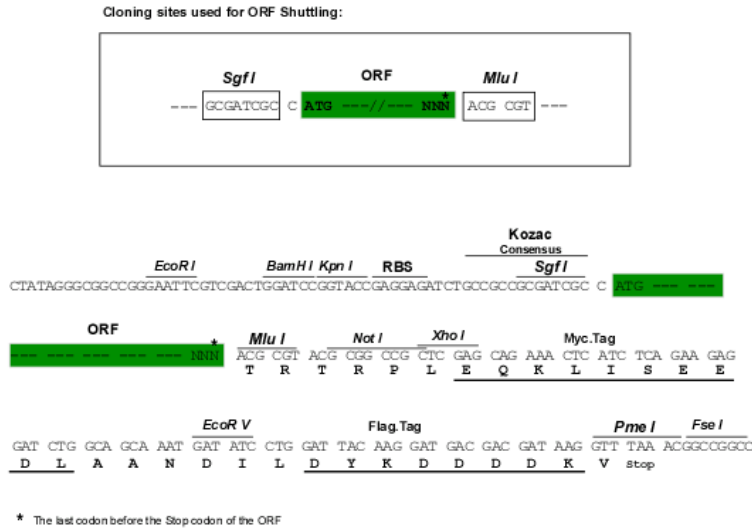
MASSTTPVSVFLAPPLEQLRHLAEELRSLLPVRVVGAEAQETAEEFNREMFWRRLNEAAMKVSGEATVLTTL
 FSKIPSPSPQETQRICEQVHIATEEVIAAYYTFPKDQGITLRKLVNVAVDIVDGTACLDDALLAAPSQS
 PENGDLISCNSVSVACQQVAEIPKDNKAAALLMLTKSVDLVKDAHEEMEQAVEECDPYCGLLDDSDNSD
 SHHNEDGVGLPSNRDSYWSEEDQALITPCLALVRASRSLKKIRILVAENGRKDQVAQLDDIVDISDEIS
 PSVDDLVL SVYPPVCHLTVRITSAKLVSVLIKALEITKASHVSPQPGDSWIPLLINAVDHCMDRIKELTQ
 RAVEL

TRTRPLEQKLISEEDLAANDILDYKDDDDKV

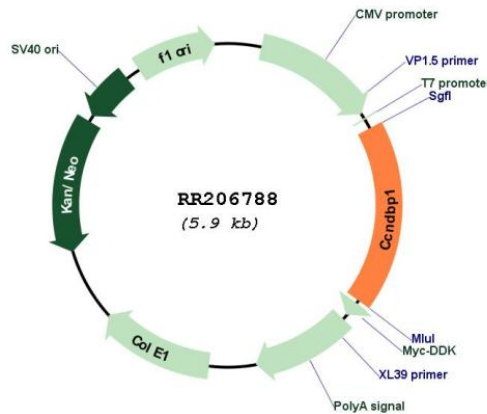
Restriction Sites:

SgfI-MluI

Cloning Scheme:



Plasmid Map:



ACCN: NM_001013204

ORF Size:	1065 bp
OTI Disclaimer:	The molecular sequence of this clone aligns with the gene accession number as a point of reference only. However, individual transcript sequences of the same gene can differ through naturally occurring variations (e.g. polymorphisms), each with its own valid existence. This clone is substantially in agreement with the reference, but a complete review of all prevailing variants is recommended prior to use. More info
OTI Annotation:	This clone was engineered to express the complete ORF with an expression tag. Expression varies depending on the nature of the gene.
Components:	The ORF clone is ion-exchange column purified and shipped in a 2D barcoded Matrix tube containing 10ug of transfection-ready, dried plasmid DNA (reconstitute with 100 ul of water).
Reconstitution Method:	<ol style="list-style-type: none">1. Centrifuge at 5,000xg for 5min.2. Carefully open the tube and add 100ul of sterile water to dissolve the DNA.3. Close the tube and incubate for 10 minutes at room temperature.4. Briefly vortex the tube and then do a quick spin (less than 5000xg) to concentrate the liquid at the bottom.5. Store the suspended plasmid at -20°C. The DNA is stable for at least one year from date of shipping when stored at -20°C.
RefSeq:	NM_001013204.1 , NP_001013222.1
RefSeq Size:	1452 bp
RefSeq ORF:	1068 bp
Locus ID:	362201
UniProt ID:	Q5BK06
Cytogenetics:	3q35
MW:	39.1 kDa
Gene Summary:	May negatively regulate cell cycle progression. May act at least in part via inhibition of the cyclin-D1/CDK4 complex, thereby preventing phosphorylation of RB1 and blocking E2F-dependent transcription (By similarity).[UniProtKB/Swiss-Prot Function]