

Product datasheet for **RR206766**

Nanog (NM_001100781) Rat Tagged ORF Clone

Product data:

Product Type:	Expression Plasmids
Product Name:	Nanog (NM_001100781) Rat Tagged ORF Clone
Tag:	Myc-DDK
Symbol:	Nanog
Mammalian Cell Selection:	Neomycin
Vector:	pCMV6-Entry (PS100001)
E. coli Selection:	Kanamycin (25 ug/mL)
ORF Nucleotide Sequence:	>RR206766 representing NM_001100781 Red=Cloning site Blue=ORF Green=Tags(s)

TTTTGTAATACGACTCACTATAGGGCGGCCGGGAATTCGTCGACTGGATCCGGTACCGAGGAGATCTGCC
GCC**CGGATCGCC**

ATGAGCGTGGATCTTTCTGGTCCCCACAGTCTGCCTAGTTGTGAGGAAGCATCGAACTCTGGGGATTCT
CGCCGATGCCTGCCGTTTCCTCTGAGGAAAATTATCTTGCTTACAAGTGTCTGCTACTGAGATGCT
CTGCACAGAGACTGCCTCTCCTCCGCCCTTCTCTGGGGACCTACCTCTCAAGATAGCCCTGATTCTTCT
AGCAATCCCAAGCTAAAGCTGTCTGGTCCCAGGCTGACGAGGGCCCTGAGAAGAAAGAAGACAAGG
TCCTCACCAAGAAGCAGAAGATGCGGACTGTGTTCTCTCAGGCCAGTTGTGTGCATCAAGGATAGGTT
TCAGAGGCAAAGGTACCTCAGCCTCCAGCAGATGCAAGATCTCTCTACCATTCTGAACCTGAGCTATAAG
CAGGTGAAGACCTGGTCCAAAACCAAAGAATGAAGTGAAGAGTGGCAGAAAAACCAATGGTTGAAGA
CTAGCAACGGCCTGACTCAGAAGGGCTCAGCGCCGGTGGAGTATCCCAGCATCCATTGCAGCTATTCTCA
GGGCTATCTGATGAACGCGTCTGGAAACCTTCCAGTATGGGGCAGTCAGACCTGGACCAACCCAATTGG
AACACCAGACCTGGACCAACCCAACCTGGAGCAACCAGACCTGGACCAACCCAATTGGAGCAACCAGG
CCTGGAGCACTCAGTCTGGTGTACTCAGGCCTGGAACAGCCAGACTTGAACGCTGCTCCGCTCCATAA
CTTCGGGGAGGACTCCCTGCAGCCTTATGTGCCGTTGCAGCAAACTTCTCCGCCAGTATTGGAGGCC
AATTTGAAGCCACTAGGAAAGCCAGGCGCATTTTAGTACCCCGCAAGCCTTGAATTGTTCTGAACT
ACTCCGTGAATTCTCCAGGCGAAATA

AG**CGGACCG**ACGCGTACGCGGCCGCTCGAGCAGAAACTCATCTCAGAAGAGGATCTGGCAGCAAATGATATCC
TGGATTACAAGGATGACGACGATAAGGTTTAA



[View online »](#)

Protein Sequence: >RR206766 representing NM_001100781
 Red=Cloning site Green=Tags(s)

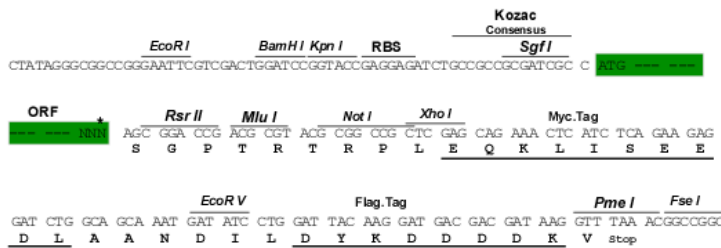
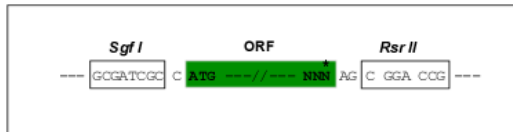
MSVDLSGPHSLPSCEEASNSGDSSPMPAVHLPEENYSCLQVSATEMLCTETASPPPPSSGDLPLQDSPDSS
 SNPKLKLSGPEADEGPEKKEENKVLTKKQKMRTVFSQAQLCALKDRFQRQRYLSLQMQDLSTILNLSYK
 QVKTWFQNRMKCKRWQKNQWLKTSNGLTQKGSAPVEYPSIHCSYSQGYLMNASGNLPVWGSQTWTNPTW
 NNQTWTNPTWSNQTWTNPTWSNQAWSQTQSWCTQAWNSQTWNAAPLHNFGEDSLQPYVPLQQNFASDLEA
 NLEATRESQAHFSTPQALELFLNYSVNSPGEI

SGPTRTRPLEQKLISEEDLAANDILDYKDDDDKV

Restriction Sites: SgfI-RsrII

Cloning Scheme:

Cloning sites used for ORF Shuttling:



* The last codon before the Stop codon of the ORF

ACCN: NM_001100781

ORF Size: 936 bp

OTI Disclaimer: The molecular sequence of this clone aligns with the gene accession number as a point of reference only. However, individual transcript sequences of the same gene can differ through naturally occurring variations (e.g. polymorphisms), each with its own valid existence. This clone is substantially in agreement with the reference, but a complete review of all prevailing variants is recommended prior to use. [More info](#)

OTI Annotation: This clone was engineered to express the complete ORF with an expression tag. Expression varies depending on the nature of the gene.

Components: The ORF clone is ion-exchange column purified and shipped in a 2D barcoded Matrix tube containing 10ug of transfection-ready, dried plasmid DNA (reconstitute with 100 ul of water).

Reconstitution Method:

1. Centrifuge at 5,000xg for 5min.
2. Carefully open the tube and add 100ul of sterile water to dissolve the DNA.
3. Close the tube and incubate for 10 minutes at room temperature.
4. Briefly vortex the tube and then do a quick spin (less than 5000xg) to concentrate the liquid at the bottom.
5. Store the suspended plasmid at -20°C. The DNA is stable for at least one year from date of shipping when stored at -20°C.

RefSeq: NM_001100781.1, NP_001094251.1

RefSeq Size: 2358 bp

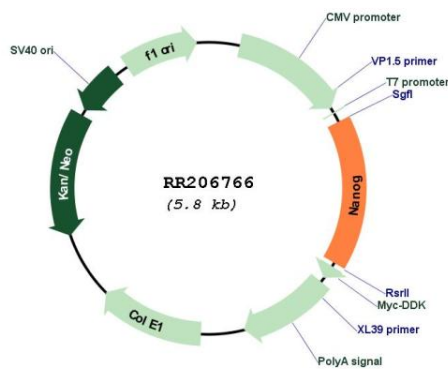
RefSeq ORF: 939 bp

Locus ID: 414065

Cytogenetics: 4q42

MW: 35.2 kDa

Product images:



Circular map for RR206766