

## Product datasheet for **RR206749**

### **Fut10 (NM\_001012360) Rat Tagged ORF Clone**

#### Product data:

**Product Type:** Expression Plasmids  
**Product Name:** Fut10 (NM\_001012360) Rat Tagged ORF Clone  
**Tag:** Myc-DDK  
**Symbol:** Fut10  
**Synonyms:** fut10A  
**Vector:** pCMV6-Entry (PS100001)  
**E. coli Selection:** Kanamycin (25 ug/mL)  
**Cell Selection:** Neomycin  
**ORF Nucleotide Sequence:** >RR206749 representing NM\_001012360  
 Red=Cloning site Blue=ORF Green=Tags(s)

TTTTGTAATACGACTCACTATAGGGCGCCGGGAATTCGTCGACTGGATCCGGTACCGAGGAGATCTGCC  
 GCC**GCGATCGCC**

ATGGTGCGGATCCGAGGAGGAAGCTTCTGCCATCTTGCCTTTGTATGACAGCCACTGTCTTTCTGATGG  
 TGACAGTCCAGGTAAGTGGCTTGGGAAATTTGAAAGGAAGAAGTTAAAACTCCGATTTGCAAGA  
 TGGACAGAAAGATGTGGAGGGAGATCCCAAACACTTGAACCCACTTCTAAAAAGGACGCACTGGCCTTG  
 TCTGGGAGGAACAAGGTGGATGCTGGTAGCTACCCATTGTGCTGTGGTGGTCTCCACTGACTGGAGAGA  
 CTGGCAGGCTCGGCCAGTGTGGGCAGATGCTTGCTTCTTTACTATCAATAGAACCTTCCAGCATCATCC  
 TATGACCAAGGCCTTCTCTTATGGGACTGACTTTAACATAGACAGCTTACCTCTGCCTCGGAAAGCC  
 CATCATGACTGGGCCCTTTTTCAGGAAGAGTCCCCAAAAACAATTATAAACTCTTCCACAAGCCAGTCA  
 TCACCTTATTCAACCATACGGCCACATTCAGCAGGCACTCCGACTTGGCACTGACTACACAGTACCTGGA  
 AAGTGTAGAAGTCTTGAAGTCACTCCGATACTTAGTTCCTTTACAGTCTAAAAACAACCTGAGACAAAA  
 CTGGCCCCACTGGTGTATGTTTCAGTCCGACTGTGATCCACCATCAGACAGGGACAGCTATGTTCCGGGAGC  
 TGATGGCTTACATTGAAGTTGATTCTATGGCGAGTGTTTACAAAAACAACATCTCCCTCAGCAGCTGAA  
 AAACCCTGCCTCTATGGATGCTGATGCCTTCTACAGGGTCTTGCCAGTATAAGTTCATCCTTGCTTTT  
 GAGAATGCAGTCTGTGATGATTACATCACCAGAAAGTTCTGGAGACCACTGAAGCTGGGAGTGGTCCCGG  
 TGTATTACGGATCTCCACCATCGCAGACTGGCTTCCAGTAACAGAAGTGCCATTCTTGTGTCAGAATT  
 TTCTACCCCAGAGAAGTGGCAAGCTTCTCAGGCGACTGGATTATGACGACGGATTGTATGAGACCTAT  
 GTGGAGTGAAGCTAAAGGGCGAGATCTTAACCAGCGACTTCTGACAGCTCTCCGGGAACGGGAGTGGG  
 GCGTGCAGGACATCAACCAGGACAACATTGACACATTCGAGTGTATGGTGTGCCGAGGGTATGGGC  
 CAACAGGAGGCTACAGGAGCAGGTGAGTGGATGGAAGTCTGGTGGTGGCCGTGGGCTGTCTCTCGGTGTG  
 GTTCTGGTCTTCTTCTGTGGCTTGCCTGCCACTGTTCTCCATTCC

**ACGCGT**ACGCGGCCGCTCGAGCAGAAACTCATCTCAGAAGAGGATCTGGCAGCAAATGATATCCTGGATT  
 ACAAGGATGACGACGATAAGGTTTAA



**Protein Sequence:** >RR206749 representing NM\_001012360  
 Red=Cloning site Green=Tags(s)

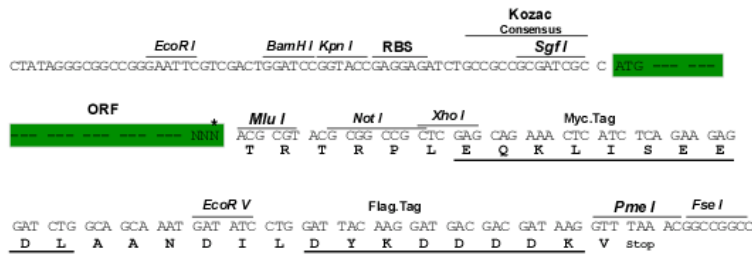
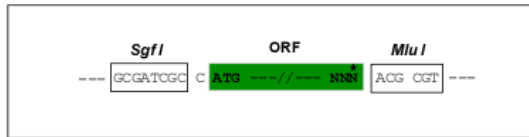
MVRIPRRKLLPSCLCMTATVFLMVTQVLVELGKFERKKFKNSDLQDGQKDVEGDPKHLNPLPKKDALAL  
 SGRNKVDAGSYPIVLWWSPLTGETGRLGQCADACFFTINRTFQHHPMTKAFLFYGTDFNIDSLPLPRKA  
 HHDWALFHEESPKNNYKLFHKPVITLFNHTATFSRHSIDLPLTTQYLESVEVLKSLRYLVPLQSKNNLRQK  
 LAPLVYVQSDCDPPSDRDSYVRELMAYIEVDVSYGECLQNKHLPQQLKNPASMADAFYRVLAAQYKFIILAF  
 ENAVCDDYITEKFWRPKLGVPVYYGSPTIADWLPNRSAILVSEF SHPRELASFIRRLDYDDGLYETY  
 VEWKLGKEISNQRLLTALREREWGVQDINQDNYIDTFECMVCRRVWARRRLQEQVSGWKS GGRGLSLGV  
 VLVFLLWLLPATVLHS

TRTRPLEQKLISEEDLAANDILDYKDDDDKV

**Restriction Sites:**  
**Cloning Scheme:**

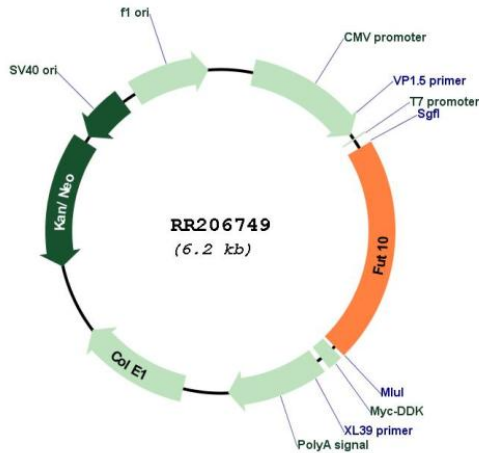
SgfI-MluI

Cloning sites used for ORF Shuttling:



\* The last codon before the Stop codon of the ORF

**Plasmid Map:**



**ACCN:** NM\_001012360

<b>ORF Size:</b>	1308 bp
<b>OTI Disclaimer:</b>	The molecular sequence of this clone aligns with the gene accession number as a point of reference only. However, individual transcript sequences of the same gene can differ through naturally occurring variations (e.g. polymorphisms), each with its own valid existence. This clone is substantially in agreement with the reference, but a complete review of all prevailing variants is recommended prior to use. <a href="#">More info</a>
<b>OTI Annotation:</b>	This clone was engineered to express the complete ORF with an expression tag. Expression varies depending on the nature of the gene.
<b>Components:</b>	The ORF clone is ion-exchange column purified and shipped in a 2D barcoded Matrix tube containing 10ug of transfection-ready, dried plasmid DNA (reconstitute with 100 ul of water).
<b>Reconstitution Method:</b>	<ol style="list-style-type: none"><li>1. Centrifuge at 5,000xg for 5min.</li><li>2. Carefully open the tube and add 100ul of sterile water to dissolve the DNA.</li><li>3. Close the tube and incubate for 10 minutes at room temperature.</li><li>4. Briefly vortex the tube and then do a quick spin (less than 5000xg) to concentrate the liquid at the bottom.</li><li>5. Store the suspended plasmid at -20°C. The DNA is stable for at least one year from date of shipping when stored at -20°C.</li></ol>
<b>RefSeq:</b>	<a href="#">NM_001012360.1</a> , <a href="#">NP_001012360.1</a>
<b>RefSeq Size:</b>	1311 bp
<b>RefSeq ORF:</b>	1311 bp
<b>Locus ID:</b>	497619
<b>UniProt ID:</b>	<a href="#">Q5F2L1</a>
<b>Cytogenetics:</b>	16q12.3
<b>MW:</b>	50.2 kDa
<b>Gene Summary:</b>	Probable fucosyltransferase.[UniProtKB/Swiss-Prot Function]