

Product datasheet for **RR206736**

Alas2 (NM_013197) Rat Tagged ORF Clone

Product data:

Product Type:	Expression Plasmids
Product Name:	Alas2 (NM_013197) Rat Tagged ORF Clone
Tag:	Myc-DDK
Symbol:	Alas2
Vector:	pCMV6-Entry (PS100001)
E. coli Selection:	Kanamycin (25 ug/mL)
Cell Selection:	Neomycin



[View online »](#)

ORF Nucleotide Sequence:

>RR206736 representing NM_013197
 Red=Cloning site Blue=ORF Green=Tags(s)

TTTTGTAATACGACTCACTATAGGGCGGCCGGGAATTCGTCGACTGGATCCGGTACCGAGGAGATCTGCC
 GCC**CGCATCGCC**

ATGGTGGCAGCAGCTATGTTGCTACGGTCTGTCCAGTGTCTCTAAGGGCCCCACAGGCCTCTAGGCA
 AAGTGGCTAAAACCTTACCAGTTCCTATTTGGTATTGGACGCTGCCCATCCTGGCCACTCAAGGACCAAC
 CTGTTCTCAAATCCATCTTAAGGCAACCAAGGCTGGAGCAGACTCTCCGTCTTGACTAAGAGCCATTGT
 CCTTTCATGCTGTGAGAAGTCCAAGACAGGAAGAGCAAGATTGTGCAGAGGGCAGCTCCAGAAGTCCAAG
 AGGATGTCAAGACTTTCAAGACAGACCTGCTGAGCTTCATGGAGTCAACTACCGAAGCCAAATCAGTGCC
 TCGTTTCCAGGATCCAGAGCAGACTGGAGGGGCACCTCCCCTGCTGATTGAGAATAATATGACTGGAAGC
 CAGGCTTTTGGTTATGACCAATTTTTAGAGACAAGATCATGGAAAAGAAGCAGGACCACACATACCGTG
 TGTTCAAGACTGTGAATCGTGGGCTAATGCCTACCCCTTGCCCAACACTTCTCCGAGGCATCTATGGA
 CTAAGGATGTTTCTGTCTGGTGCAGTAATGACTATTTGGGCATAAGCAGGCACCCTCGTGTCTTGACG
 GCCATAGAGGAGACCCTGAAGAATCATGGAGCTGGAGCTGGGGGCACTCGCAATATCTCAGGTACAAGCA
 AGTTTTATGTGGAGCTTGAACAGGAGCTGGCTGAACATACATCAAGACTCGGCTCTGCTCTTCTCCTC
 CTGTTTTGTGGCAATGATTCTACTCTTTTACTGCGCAAGCTTCTGCCAGGGTGTGAGATCTACTCA
 GACGCAGGCAATCATGCCTCCATGATCCAAGGCATTCTGAACAGTGGTGCAGTCAAGTTTGTCTTACAG
 ACAATGACCCAGGCCACCTGAAGAACTTCTTGAGAAGTCCGATCCCAAGACACCAAAAATTGTGGCTTT
 TGAGACTGTTCACTCCATGGATGGTGCATCTGTCTCTGGAGGAATTGTGTGATGTGGCCACCAGTAC
 GGGGCCCTGACCTTCGTGGATGAAGTCCATGCCGATAGGACTATATGGAACCCGGGGTGCAGGGATCGGG
 AGCGTGATGGAATTATGCACAAGCTTGACATCATCTGGAACCTTGGCAAGGCCTTTGGCTGTGTGCG
 TGGCTATATCGCCAGCACTCGGGACTTGGTGGACATGGTGGCTCCTACGCTGCAGGCTTCATCTTTACC
 ACTTCACTGCCTCCCATGGTGTCTCTGGAGCTCTAGAGTCTGTGCGTCTACTCAAGGGAGAGGAGGTC
 AAGCCCTGAGGCGTGACACCAGCGCAACGTCAAACATATGCGCCAGCTACTAATGGACAGGGGCTTTCC
 TGTATCCCTGTCCCAGCCACATATCCCATAAAGGGTGGGTAATGCGGCACTCAACAGCAAGATCTGT
 GATCTTCTGCTCGCAAGCACAGCATCTATGTGCAGGCCATCAACTACCAACTGTGCCTCGTGGTGGG
 AGCTGTGCGCTTGCCCCCTCCCCCACCACAGCCCTCAGATGATGGAAAACCTTGTGGAGAAGTTGCT
 GCTGGCCTGGACTGAGGTGGGGTGGCCCTCCAAGATGTGTCTGTGGCTGCATGCAACTTCTGCCGCTG
 CCTGTGCACTTTGAGCTTATGAGCGAGTGGGAGCGATCCTACTTTGGGAACATGGGACCCCAATATGTTA
 CTACCTATGCC

ACGCGTACGCGGCCGCTCGAGCAGAAACTCATCTCAGAAGAGGATCTGGCAGCAAATGATATCCTGGATT
 ACAAGGATGACGACGATAAGGTTTAA

Protein Sequence:

>RR206736 representing NM_013197
 Red=Cloning site Green=Tags(s)

MVAAAMLLRSCPVL SKGPTGLLGKVAKYQFLFGIGRCPILATQGPTCSQIHLKATKAGADSPSWTKSHC
 PFMLSELQDRKSKIVQRAAPEVQEDVKTFKTDLLSFMESTTRSQSVPRFQDPEQTGGAPLLIQQNMTGS
 QAFGYDQFFRDKIMEKKQDHTYRVFKTVNRWANAYPFAQHFSEASMSKDVSVWCSNDYLGISRHPVLQ
 ATEETLKNHGAGAGGTRNISGTSKFHVELEQELAEELHHKDSALLFSSCFVANDSTLFTLAKLLPGCEIYS
 DAGNHASMIQGIIRNSGAVKVFVRHNDPGLKLLLEKSDPKTPKIVAFETVHSMGAI CPLEELCDVAHQY
 GALTFVDEVHAVGLYGRGAGIGERDGMHKLDIISGTLGKAFGCVGGYIASTRDLVDMVRSYAAGFIFT
 TSLPPMVL SGALESVRLKGEQGALRRAHQRNVKHMRLMDRGFPVIPCPSHIIPVIRVGNAAALNSKIC
 DLLLAKHSIYVQAINYPTVPRGEELRLAPSPHSPQMMENFVEKLLLAWTEVGLPLQDVSVAACNFCRR
 PVHFELMSEWERSYFGNMGPPQYVTTYA

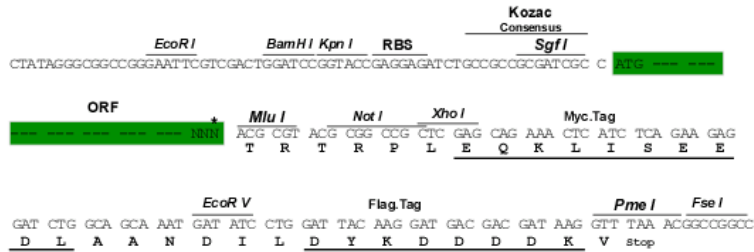
TRTRPLEQKLISEEDLAANDILDYKDDDDKV

Restriction Sites:

Sgfl-MluI

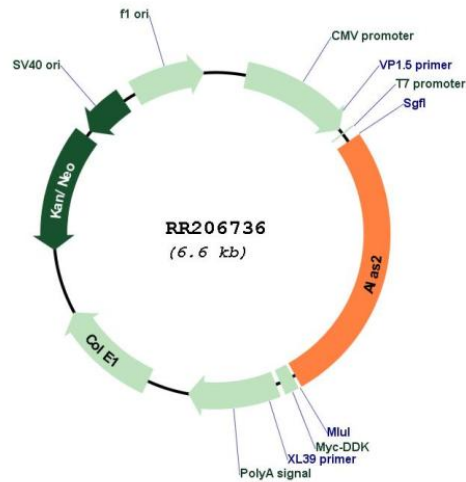
Cloning Scheme:

Cloning sites used for ORF Shutting:



* The last codon before the Stop codon of the ORF

Plasmid Map:



ACCN:

NM_013197

ORF Size:	1761 bp
OTI Disclaimer:	The molecular sequence of this clone aligns with the gene accession number as a point of reference only. However, individual transcript sequences of the same gene can differ through naturally occurring variations (e.g. polymorphisms), each with its own valid existence. This clone is substantially in agreement with the reference, but a complete review of all prevailing variants is recommended prior to use. More info
OTI Annotation:	This clone was engineered to express the complete ORF with an expression tag. Expression varies depending on the nature of the gene.
Components:	The ORF clone is ion-exchange column purified and shipped in a 2D barcoded Matrix tube containing 10ug of transfection-ready, dried plasmid DNA (reconstitute with 100 ul of water).
Reconstitution Method:	<ol style="list-style-type: none">1. Centrifuge at 5,000xg for 5min.2. Carefully open the tube and add 100ul of sterile water to dissolve the DNA.3. Close the tube and incubate for 10 minutes at room temperature.4. Briefly vortex the tube and then do a quick spin (less than 5000xg) to concentrate the liquid at the bottom.5. Store the suspended plasmid at -20°C. The DNA is stable for at least one year from date of shipping when stored at -20°C.
RefSeq:	NM_013197.1 , NP_037329.1
RefSeq Size:	1899 bp
RefSeq ORF:	1764 bp
Locus ID:	25748
UniProt ID:	Q63147
Cytogenetics:	Xq13
MW:	64.8 kDa
Gene Summary:	erythroid-specific isozyme that catalyzes the conversion of glycine and succinyl-CoA to 5-aminolevulinate [RGD, Feb 2006]