

## Product datasheet for **RR206711**

### Dab2ip (NM\_138710) Rat Tagged ORF Clone

#### Product data:

Product Type:	Expression Plasmids
Product Name:	Dab2ip (NM_138710) Rat Tagged ORF Clone
Tag:	Myc-DDK
Symbol:	Dab2ip
Synonyms:	AIP-1; DIP1/2
Vector:	pCMV6-Entry (PS100001)
E. coli Selection:	Kanamycin (25 ug/mL)
Cell Selection:	Neomycin
ORF Nucleotide Sequence:	>RR206711 representing NM_138710 Red=Cloning site Blue=ORF Green=Tags(s)

TTTTGTAATACGACTCACTATAGGGCGCCGGAATTCGTCGACTGGATCCGGTACCGAGGAGATCTGCC  
GCC**GCGATCGCC**

ATGGAGCCCGACTCCCTCCTGGACCCAGGGGACTCCTACGAGTCACCCCAAGAAAGGCCGGGCTCCCGGC  
GCAGCCTTCCCGGCAGCCTGTCAGAGAAAAGCCAGCATGGAGCCCTCGGCTGCAACCCGTTCCGGGT  
CACGGGCTTCTCAGCCCGCCCTCAAGGGCTCCATCAAGCGCACCAAGGCCAGCCAAACTGGACCGC  
AACCCACAGCTTCCGCCACATCCTGCCGGGTTCGGAGCGCAGCCACCGCCCGCGGACAATGAGAGGT  
CCCATCTGATGCCAAGGCTGAAGGAATCTCGATCACACGAGTCCCTGCTCAGCCCCAGCAGCGCAGTGG  
GGCCCTGGACCTCAGCATGGAGGAGGAGGTGCTTATCAAGCCTGTTACAGCAGCATCCTGGGTCAGGAC  
TACTGCTTCGAGGTAACAACATCATCAGGAAGCAAGTGTTCCTCCTGCCGGTCAGCCGCTGAACGAGATA  
AGTGGATGGAGAACCTGAGGCGAGCAGTGCACCCCAACAAGGACAACAGCCGGCGTGTGGAGCACATCCT  
GAAGCTATGGGTGATTGAGGCCAAGGATCTGCCAGCCAAGAAGAAGTATCTGTGAACTGTGCCTGGAC  
GATGTACTGTATGCCGTACCACGGCAAGCTCAAGACGGACAATGTCTTCTGGGAGAGCACTTTGAGT  
TCCACAACCTGCCGCCCTGCGCACAGTCACTGTCCACCTGTACCGGAAACTGACAAGAAGAAGAAAA  
GGAACGCAACAGTACCTGGGCCTGGTGAAGCCTGCCTGCCGCTCGGTGGCTGGGCGGCAGTTTGTGGAG  
AAGTGGTACCCAGTGGTACACCTAATCCCAAGGGTGGCAAGGCCCTGGGCCATGATCCGAATCAAGG  
CACGCTACCAGACCATCACCATCTTGCCTATGGAGATGTACAAGGAGTTTGTGAGCACATCACTAACCA  
CTACCTGGGGCTGTGTGCAGCCCTTGGCCCATCCTCAGTGCCAAGACCAAGGAGGAGATGGCGTCGGCT  
CTGGTGACATCCTGCAGAGCACAGGCAAGGTGAAGGACTTTCTAACAGACCTGATGATGCAGAGGTGG  
ACCGCTGTGGGACAATGAGCACCTCATCTTCCGGGAGAACACATTGGCCACCAAGGCCATCGAAGAATA  
CCTCAAACCTCGTGGCCAGAAGTACCTGCAGGACGCACTAGGTGAGTTTCATCAAAGCCCTGTATGAGTCA  
GACGAAAATTGTGAAGTGGACCCAGTAAGTGCTCAGCCCGGACCTCCCGAGCACAGGGCAACCTCA  
AGATGTGTGTGAGCTGGCCTTCTGCAAGATCATCAACTCTACTGTGTCTTCCCTCGGGAACCTAAAGA  
GGTGTTCGCCTCATGGCGCAGGAGTGTAGCAGCCGCGCCGGCCTGATATCAGTGAACGACTCATTAGC  
GCCTCCCTCTTCTCGCTTCTGTGCCCTGCCATCATGTCCGCTCGCTTCAACCTGCTTCAGGAGT



[View online >](#)

ATCCTGACGACCCGACAGCTCGCACCTCACGCTCATCGCCAAAGTTACCCAGAACCTGGCCAACTTTGC  
CAAGTTTGGCAGCAAAGAGGAATACATGTATTTCATGAACCAGTTCTGGAGCACGAGTGGACCAACATG  
CAGCGCTTCTGTTGGAGATCTCCAACCCTGAGACCCTTTCTAACACAGCAGGCTTCGAGGGCTACATAG  
ACCTGGGCCGGGAGCTCTAGCTTACACTCTCTGCTCTGGGAAGCTGTCCAGCCAGCTTGATCAGAGCAT  
TGTATCCAAGCTGGGACCCCTGCCTCGTATCCTGAGGGATGTCCACACAGCACTGAGCACTCCAGGCAGT  
GGCAGATCCCTGGCACCATAACCTGGCTCCACACCAGGCTCTGGCAGCAGCAGTGTCTCAGCTGGGC  
TTCAGAAGATGGTGATTGAGAATGATCTCTGGTCTGATAGATTTACCCGGTTACCGTCTCCAACCCC  
CGAAAACAAGGACTTGTGTTTTGTCAAAAGTCTCCGGGGTCCAGCCTTACCTGCCCGCAGCTCAAGC  
TACTCAGAAGCCAACGAGCCTGACCTGCAGATGGCCAACGGCAGCAAGAGCCTGTCCATGGTGGACCTCC  
AGGACGCCCGCACACTGGATGGGAGGCAGGTTCCCCAGTGGGCCCGAAGCCCTCCCTGCTGACGGGCA  
GGTACCTGCAACTCAGCTGGTGGCTGGGTGGCCAGCCCGGCAGCCCAAGTGGCCTGGCAGGATTGGCC  
ACAGTGGCGGGCAGTGCCAACACCAACCACACCAGGCACCTCCGAGGGTGCACCAGGCCGGCCTCAGT  
TGTTGGCCCTCTCTCCTCCAGAATCCCGTGTACCAGATGGCTGCTGGCCTGCCACTGTACCCCGTGG  
CCTTGGTGACTCAGGCTCTGAGGGCCACAGCTCCCTGAGCTCTCACAGCAATAGTGAAGAGCTGGCAGCC  
GCTGCCAAACTAGGAAGTTTTAGCACTGCTGCTGAGGAGCTGGCACGGCGCCTGGTGGAGCTGGCACGGA  
GGCAGATGTCACTGACTGAGAAGGGTGGTCAGCCAACAGTGGCCGAGGCAAAATAGTGCAGGTCCCCAGCG  
GAGGATTGACCAGCCTCCACCGCCGCCACCGCCACCCTCTGCCCCCGGGGCAGGACACCTCCTACC  
ATGCTGAGCACCTACAATACCCACGACCTCAAGTGGAAACCCTGGCATCAGCATCACCTGACTGGGCTG  
GCCCTGGCACCCGGCTGCGGCAACAGTCTCTCTTCCAAGGGAGACAGCCAGAGCTGAAGCCCGCGC  
CTTGATAAAGCAGGGCCCTTCGCCGTCAGTCCAATGCCCTGGACCGCACGGCCGCTTGGCTCTTGACC  
ATGAACGCGCAGTTGTTAGAAGACGAGGGTCTGGGCCAGATCCCCCACAGGGATAGGCTAAGGAGTA  
AGGAGGAGCTCAGCCAAGCAGAAAAGGATCTGGCGGTGCTGCAAGACAAGCTGCGGATCTCCACCAAGAA  
GCTGGAGGAGTACGAGACCCTGTTCAAGTGCAGGAGGAGACGACGAGAAGCTGGTGTGAGTACCAG  
GCTCGGCTGGAGGAGGGCGAGGAGCGGCTGCGGGCAGCAGGAAGACAAGGACGTCCAGATGAAGGGCA  
TCATCAGCAGTTGATGTCTGTGGAGGAGAACTGAAGAAGGATCACGCTGAGATGCAAGCGGCCGTAGA  
CTCCAAACAGAAGATCATCGATGCCAGGAAAAGCGCATTGCCTCGTGGACGCTGCCAATGCCCGCCTC  
ATGAGTGCCTCACACAGCTGAAAGAGAGGTACAGCATGCGAGCCCGTAACGGCGTCTCCCCACCAACC  
CCACCAAATTGCAGATTACTGAGAACGGCGAGTTCAGAAAACAGCAGCAATTGT

ACGCGTACGCGGGCCGCTCGAGCAGAAACTCATCTCAGAAGAGGATCTGGCAGCAAATGATATCTGGATT  
ACAAGGATGACGACGATAAGGTTTAA

Protein Sequence: >RR206711 representing NM\_138710  
 Red=Cloning site Green=Tags(s)

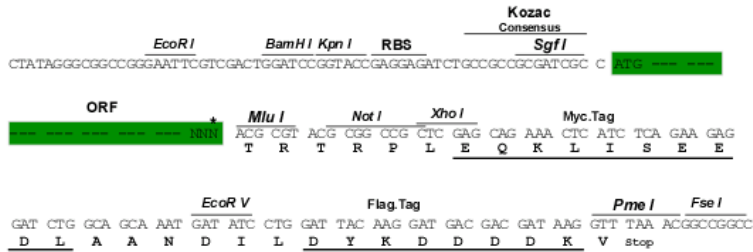
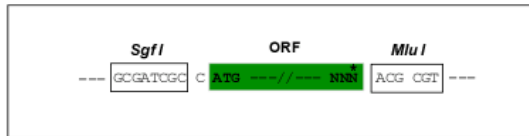
MEPDSLDPGDSYESPQERPGSRRSLPGSLSEKSPSMEPSAATPFRVTGFLSRRLKGSIKRTKSQPKLDR  
 NHSFRHILPGFRSAATAAADNERSHLMRPLKESRSHELLSPSSAVEALDLSMEEVLIKPVHSSILGQD  
 YCFEVTSSSGSKCFSCRSAAERDKWMENLRAVHPNKDNSRRVEHILKLWVIEAKDLPKPKYLCELCLD  
 DVLYARTTGKLTNDNVFGEHFHNLPLRRTVTVHLYRETDKDKKERNYSYGLVSLPAASVAGRQFVE  
 KWYPVVTNPKGGKPGPMIRIKARYQTIITILPMEYKEFAEHITNHYLGLCAALEPILSAKTKEEMASA  
 LVHILQSTGKVKDFLTDLMSEVDRCGDNEHLIFRENTLATAKAIIEEYKLVGQKYLQDALGEFIKALYES  
 DENCEVDPKSCSAADLPEHQNLKMCCELAFCKIINSYCVFRELKEVFAWRQECSSRGRPDISERLIS  
 ASLFLRFLCPAIMSPSLFNLLQEYPDDRTARTLTLIAKVTQNLANFAKFGSKEEYMSFMNQFLEHEWTNM  
 QRFLLEISNPETLSNTAGFEGYIDLGRESSLHSLLEAVSQLDQSIKSLGPLPRILRDVHTALSTPGS  
 GQLPGTNDLASTPGSGSSSVSAGLQKMIENDLSGLIDFTRLPSPTPENKDLFFVTRSSGVQPSPARSS  
 YSEANEPDLQMANGSKSLSMVDLQDARTLDGEAGSPVGPEALPADGQVPATQLVAGWPARAAPVSLAGLA  
 TVRRAVPTPTTGTSEGAPGRPQLLAPLSFQNPVYQMAAGLPLSPRGLGDSGSEGHSSLSHNSNEELAA  
 AAKLGSFSTAAEELARRGELARRQMSLTEKGGQPTVPRQNSAGPQRRIQPPPPPPPPPPAPRGRTPPT  
 MLSTLQYPRPSSGTLASAPDWAGPGTRLRQSSSSKGDSPELKPRALHKQGSPSPVSNALDRATAWLLT  
 MNAQLLEDEGLGPDPPHRDLRSKEELSQAEKDLAVLQDKLRISTKKLEEYETLFKQCEETTQKLVLEYQ  
 ARLEEGEERLRRQEDKDVQMKGIISRLMSVEEELKKDHAEMQAAVDSKQKIIDAQEKRIASLDAANARL  
 MSALTQLKERYSMRARNGVSPNTNPTKLQITENGEFRNSSNC

TRTRPLEQKLISEEDLAANDILDYKDDDDKV

Restriction Sites: SgfI-MluI

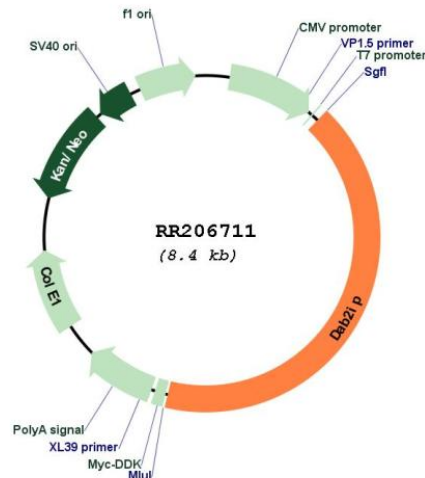
Cloning Scheme:

Cloning sites used for ORF Shutting:



\* The last codon before the Stop codon of the ORF

## Plasmid Map:



ACCN: NM\_138710

ORF Size: 3483 bp

OTI Disclaimer: The molecular sequence of this clone aligns with the gene accession number as a point of reference only. However, individual transcript sequences of the same gene can differ through naturally occurring variations (e.g. polymorphisms), each with its own valid existence. This clone is substantially in agreement with the reference, but a complete review of all prevailing variants is recommended prior to use. [More info](#)

OTI Annotation: This clone was engineered to express the complete ORF with an expression tag. Expression varies depending on the nature of the gene.

Components: The ORF clone is ion-exchange column purified and shipped in a 2D barcoded Matrix tube containing 10ug of transfection-ready, dried plasmid DNA (reconstitute with 100 ul of water).

Reconstitution Method:

1. Centrifuge at 5,000xg for 5min.
2. Carefully open the tube and add 100ul of sterile water to dissolve the DNA.
3. Close the tube and incubate for 10 minutes at room temperature.
4. Briefly vortex the tube and then do a quick spin (less than 5000xg) to concentrate the liquid at the bottom.
5. Store the suspended plasmid at -20°C. The DNA is stable for at least one year from date of shipping when stored at -20°C.

RefSeq: [NM\\_138710.3](#), [NP\\_619724.3](#)

RefSeq Size: 6508 bp

RefSeq ORF: 3486 bp

Locus ID: 192126

UniProt ID: [Q6P730](#)

Cytogenetics: 3p11

**MW:** 128.2 kDa

**Gene Summary:** GTPase-activating protein; binds the N-terminal domain of DOC-2/DAB2 [RGD, Feb 2006]