

Product datasheet for **RR206704**

Ndufs7 (NM_001008525) Rat Tagged ORF Clone

Product data:

Product Type: Expression Plasmids
 Product Name: Ndufs7 (NM_001008525) Rat Tagged ORF Clone
 Tag: Myc-DDK
 Symbol: Ndufs7
 Synonyms: MGC105684
 Vector: pCMV6-Entry (PS100001)
 E. coli Selection: Kanamycin (25 ug/mL)
 Cell Selection: Neomycin
 ORF Nucleotide Sequence: >RR206704 representing NM_001008525
 Red=Cloning site Blue=ORF Green=Tags(s)

TTTTGTAATACGACTCACTATAGGGCGGCCGGAATTCGTCGACTGGATCCGGTACCGAGGAGATCTGCC
 GCC**CGATCGCC**

ATGGCGGCCTGGCGGCTCCTGGCTTGCTCTGTACGGATCCTGGGTCTGCGCACAGGCACAGTGGCTC
 AGCTGCGCAGAGCCACCAGAGTGTGGCAGCCACTGGGAGCCGAGCAGCACACAGTCTGCCGTGCCAA
 GGCTGGAGCTGGAGCCGTGGTCCCTAAGCCCTCCCATCTCCAGAAAGCCGGGCCGAGTATGTAGTGACC
 AAGCTGGATGACCTCATCAACTGGGCGCGCCGGAGCTCCCTGTGGCCTATGACCTTCGGCTTGGCGTGCT
 GTGCCGTGGAGATGATGCACATGGCCGCCCGCGCTATGACATGGACCGCTTTGGTGTGGTGTCCGTGC
 CAGCCCGCCAGGCTGACGTGATCGTAGCTGGCAGCTCACTAACAAGATGGCTCCAGCACTCCGC
 AAGGTGTACGACCAGATGCCGAACCCGGTATGTGGTGTCCATGGGAGCTGTGCCAATGGCGGTGGCT
 ACTACCACTACTCCTACTCGTTGTTCTGGCTGTGACCGAATTGTGCCAGTGGACATCTATGTGCCAGG
 CTGCCCGCCACGGCCGAGGCGCTGCTCTACGGCATCTTGACGCTGCAGCGGAAGATCAAACGCCAACAG
 AAGCTGAAGATCTGGTACCGCAGG

ACGCGTACGCGGCCGCTCGAGCAGAACTCATCTCAGAAGAGGATCTGGCAGCAAATGATATCCTGGATT
 ACAAGGATGACGACGATAAGGTTTAA



[View online »](#)

Protein Sequence: >RR206704 representing NM_001008525
 Red=Cloning site Green=Tags(s)

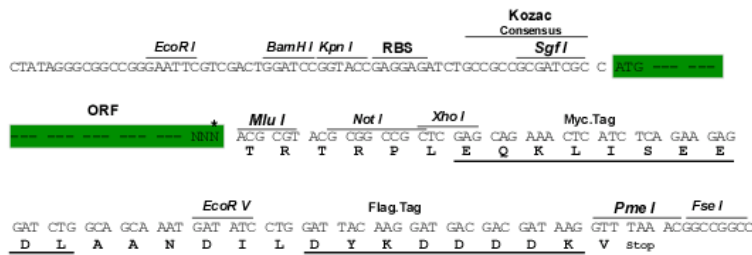
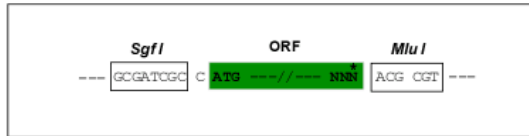
MAALAAPGLLSVRILGLRTGTVAQLRRAHQSVAAATGSPSSTQSAVSKAGAGAVVPKPSHLPRSRAEYVVT
 KLDDLINWARRSSLWPMTFGLACCAVEMMHMAAPRYDMDRFGVFRASPRQADVMIVAGTLTNKMAPALR
 KVVYDQMPEPRYVSMGSCANGGGYYHYSVSVVRGCDRIVPVDIYVPGCPPTAEALLYGILQLQRKIKREQ
 KLKIWYRR

TRTRPLEQKLISEEDLAANDILDYKDDDDKV

Restriction Sites: Sgfl-MluI

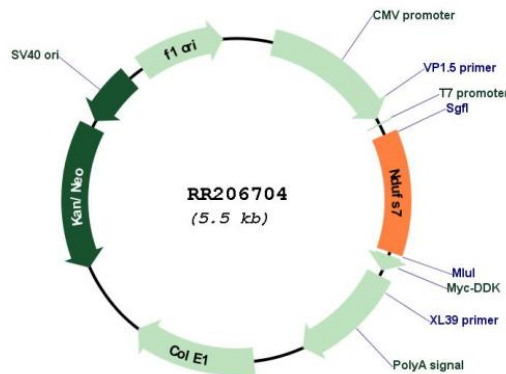
Cloning Scheme:

Cloning sites used for ORF Shuttling:



* The last codon before the Stop codon of the ORF

Plasmid Map:



ACCN: NM_001008525

ORF Size: 654 bp

OTI Disclaimer:	The molecular sequence of this clone aligns with the gene accession number as a point of reference only. However, individual transcript sequences of the same gene can differ through naturally occurring variations (e.g. polymorphisms), each with its own valid existence. This clone is substantially in agreement with the reference, but a complete review of all prevailing variants is recommended prior to use. More info
OTI Annotation:	This clone was engineered to express the complete ORF with an expression tag. Expression varies depending on the nature of the gene.
Components:	The ORF clone is ion-exchange column purified and shipped in a 2D barcoded Matrix tube containing 10ug of transfection-ready, dried plasmid DNA (reconstitute with 100 ul of water).
Reconstitution Method:	<ol style="list-style-type: none"> 1. Centrifuge at 5,000xg for 5min. 2. Carefully open the tube and add 100ul of sterile water to dissolve the DNA. 3. Close the tube and incubate for 10 minutes at room temperature. 4. Briefly vortex the tube and then do a quick spin (less than 5000xg) to concentrate the liquid at the bottom. 5. Store the suspended plasmid at -20°C. The DNA is stable for at least one year from date of shipping when stored at -20°C.
RefSeq:	<u>NM_001008525.1</u> , <u>NP_001008525.1</u>
RefSeq Size:	750 bp
RefSeq ORF:	657 bp
Locus ID:	362837
Cytogenetics:	7q11
MW:	23.9 kDa