

## Product datasheet for **RR206647**

### Zfyve9 (NM\_001107952) Rat Tagged ORF Clone

#### Product data:

**Product Type:** Expression Plasmids  
**Product Name:** Zfyve9 (NM\_001107952) Rat Tagged ORF Clone  
**Tag:** Myc-DDK  
**Symbol:** Zfyve9  
**Vector:** pCMV6-Entry (PS100001)  
**E. coli Selection:** Kanamycin (25 ug/mL)  
**Cell Selection:** Neomycin  
**ORF Nucleotide Sequence:** >RR206647 representing NM\_001107952  
Red=Cloning site Blue=ORF Green=Tags(s)

TTTTGTAATACGACTCACTATAGGGCGGCCGGGAATTCGTCGACTGGATCCGGTACCGAGGAGATCTGCC  
 GCCCGATCGCC

ATGGAGAATTACTTCCAAGCAGAAGCTTACAACCTGGACAAGGTATTAGATGAATTTGAACAAAATGAAG  
 ATGAAACAGTTTTCTCTACTTTATTGGATACAAAGTGAATAAGATTTTAGATTCTCTCTCATCCATT  
 GTCTTTTAAACCCTGCATTAGCCAATGTGAATGAACCTACAATTTCTAATGAGACAGGACCACAGCGGAAA  
 ATCTTTTCTCTTGGCTGAGCTCCCTTACAAGGGAGGAAAAAGGTCCCTGTGCTAACGACAGGACG  
 GTAGTCTAAATCCAGAGATTGACACGATGTGGATTGATGAAAATGCTGTGGCAGAAGACCAACTAATTAA  
 GAGAACTACAATCAGGATGATCAATTTAGTGCCGTTGAAAGTGGGAGAGGAGAAACGTGGGAGCCTCACT  
 TGTCTGCCAGACGAGAAGAATGTTCTGGTTGTAGCTGTCATGCATAACTGTGATAAAAGGACTGCAAA  
 GTGATTTGCAGGATTGTAATAACTATAATAGTCAATCCCTCATGGATTCTTTTAGCTGTTCACTGGATAA  
 TGAACTAGACAAACTGATCAATTTAGTTTTAGTATGAATGGTCCGCAGAAAAAGGTATAAACTCAGAG  
 AAACAAATGGATGCTTTGAATAAACCAAAATCAGAGAGGGATTCTTAAATCATCTCTGCGCTGCTTCAG  
 CTAACAGTGAACCAAGTATCTTCTCTTCAACAATTAAGGACAATGAAAATGTAGGTAGAGACCCATC  
 TACATCTACAGCTACAAGCTTAGCAATTAATACATCCCAGGGAATGGATGGAGGGCTGCCATTAATAAAA  
 CAAGAGGATTATATGCCTGATGAGGACCTTTCTGGCGCAAACAGCTCTTCTAGGACAGATCTAGGGAGCT  
 CAAACTCCTTTTCCCACTCAAGGGAGGAGCTCTTAACAAAAACAGAGCCAGCAGAGGAGAGGACAGCTGA  
 AGACCCCTCCCATCTGGTTTATCTTTGAATCTCAAGCCAGATACTCTGCTTTATGTGGAAGGGACAAT  
 TGCGAACCATCCTCAGACTGCCTGTGTCTAGTGAGACTAGAAGTATGAGAGATGGAGGTAAAGACTCTC  
 AGACGACTCACTGGGACTCAGCAAAGCTAAATGAGGTGGATGATCGCCAAGGAAGTGAAGAAAATCAAGT  
 GGTTTTACAGATCAGCCAACCTGAGGACCCTCAGAGTGCAGGAGAGTGTGTTAGAATGCCAGATTCAGAT  
 CTAGATTTCAAAGAACTTGCTTGAATGAAAGTGAAGGATATGATTTCTCCACTGTTAGTGATGCACCAG  
 CAGCAAATCTCTGTCTAATAGTTGTGATTCTATGGAATGCAGAGCCCAATTGTATCTTTTGTCCAAA  
 GACTTTACCCTCAAAGAAGATTGAGTAACAGAAGAAAAAGAAATAGAAGAGAGCAAATCAGAATGCTAC  
 TCAAATCTTTATGAACAGAGAGGAAATGAGAACACAGAAGGGAATGGACTGCTTTTAAACAGCACTGGAA  
 CTATAATGAAGAAAAATTTTACATAATTTCTGTAGTCAATCCCATCTGTACTCGGGCAATCTTCCCC  
 CAAGATAGCAAACCTGCAGTCTATTAGTGTCTTTTGGTGGTGAAGACCCAAGCAACCTTCTAATCTT



[View online »](#)

AAACTTCAGATTCCAAAGCCATTATCAGACCATTTACAAAATGACCTTCCTGCAAACAATGGAAATAATA  
GTAAAAACAAAAATGATATTCTTGGGAAAGCAAACTAGGGGAAAACTCAGCAGTCAGTGCCTGCAGTGC  
AACTTTGGGAAACATCTCTGTGACTGATACAAATGGGGAACATTTAGAAAAGTTTCGAGGCTGACATCTCC  
AGTAGACCATGCCTTGCATTATCTCCAGATAGTCCAGATAATGATCTCAGAGCTGGTCAATTTGGAATTT  
CTGCAAGAAAGCCATTTACCACCTGGGTGAGGTGGCACCAGTATGGGTACCAGACTCCCAGGCTCCGAA  
CTGCATGAAGTGTGAAGCTCGGTTTACATTACCAAAAAGGAGGCATCATTGCAGAGCATGTGGGAAGGTT  
TTCTGTGCTTCTGTGCAGCCTGAAATGCAAACTGCTGTACATGGATAGAAAGGAAGCTCGAGTGTGTG  
TCATCTGTCACTCAGTGCCTAATGAACGCTCAAGCCTGGGAGAACATGATGAGTGCCTCAAGCCAGAGCCC  
TAACCCTAACAACTCTGTGAATACTGTTCTACTATCCCTCCCTTGCAGCAAGCTCAGGCCTCAGGAGCC  
CTGAGCTCTCCACCTCCCCTGTGATGGTACCTGTGGGAGTTTTAAAGCACCTGGAACAGAAGTGCCTC  
AGCCAGAGAGCAGAGGAGATTTGGTTTGTGATGGGATTTTACCCAATGGAGAAGTTGCTGATGCAGC  
CAAATTAACAATGAATGGAACCTCTCTGCAGGAACCTGGCTGTGTACATGACCCAGTCAAGCCTGTA  
GCCACAGTCTCTACCGCAGAGGCTGACGTTTCTCTGTTCTCTGGGAGCATTACTCAGTTTGAAGTC  
CTGTTGGAAGTCAATGAACCTTATTCTGAAGATGGCCTTCTCCCATCTCATCTCCACGGGTGTGAA  
AGGAGATTATGCTGTGGAAGAGAAACCATCACAGATTTCACTCATGCAGCAACTGGAGGATGGTGGCCCT  
GACCCACTTGTGTTTGTAAAAATGCAAAATTTATTGTCAATGGTAAAAATGTAAATATGTGAACAGGA  
AGTGCTGGTGTTTACTACCAAAGGAATGCATGCTGTGGGTGAGTCTGAGATAGTCAATTTGCTACAGTG  
TCTACCAGATGAGAAATGTTTGGCCAAGGACATCTTAAATCATTTGTACAACTTACCAGGATGCACTG  
GCTGGGAGTGTGTGGGCAGCCTGGGACATTTCTTCTTCACTCAGAGCTTCTGGGCAGTAAAGAGCAGC  
GCGGGTCTCTGTACATGACCTCTACCCACAGTCACTGCAAGACCTGTGCTTCCAACACCTCCTTATCT  
GTTTGGGATTCATCCAGAAAATGGGAGACCCCTGGGCCAAAGTGTTCCTATTCGACTCATGTTAAGA  
CTTGGAGCTGAGTATCGACTTTACCCCTGTCCACTGTTCACTGTGTCAGATTTCCGAAAGCCATTGTTCCGAG  
AAACTGGGCATACCATCATGAATCTTCTAGCAGACTTCCGAAATACCAGTACACTTTGCCAGTGTCCA  
AGGTTTGGTGGTTGATATGGAAGTTCGGAAAACAAGCATCAAAATTCAGCAACAGATACAATGAGATG  
ATGAAAGCCATGAACAAATCCAATGAGCAGCTCCTGGCAGGAGGTGCCTGCTTCAATGAAAAGGCAGATT  
CTCATCTTGTGTGTACAGAACGATGATGGAACTATCAGACCCAGGCCATCAGTATTCACAATCAGCC  
CAGGAAAGTGACTGGTGCAGCTTCTTCTGTTCAGTGGCGCACTGAAGTCTCTCAGGGTACCTTGCC  
AAGTCCAGTATTGTAGAAGATGGCGTTATGGTCCAGATCACTGCAGAGAACATGGATTCTTGAGGCAGG  
CACTGCGGGAGATGAAGGACTTTACCATCACTTGTGGAAAGGCAGATGCAGAGGACCCCAAGAACAGAT  
CCACATCCAGTGGGTGGACGACGACAAGACAGTTAACAAAGGTGTGGTGTGAGTCTATAGATGGGAAGTCC  
ATGGAATCTATAACAAATGTGAAAATATCCATGGGTGAGATATAAAGCCAATGAAAAAGTCATCAGAT  
GGACAGAGGTTTTCTTCTAGAGAACGATGACCACCGTACCTGCCTGAGTGACCCCTGCAGATCACAGCAG  
ACTGACCGAGCAGCTCGCCAAGGCACTTCTGCTGGCCCTCTGCCCCACCTGAAGCTTTTAAAAAGAGAC  
GGAATGACAAAATGGGACTCCGTGTGACGCTTACTCAGATCAGGTTGGCTATCAAGCAGGGAGCAATG  
GACAGCCCTCCCTCGCAGTACATGAAGGATCTGGACAGTGCCTTGGTGCCTGTATCCATGGAGGAGC  
CTGCCAGCTCAGCGAGGGCCCGGTGGCATCGAGCTCATTTTTACATCTGGAGAACATCGCG

ACGCGTACGCGGCGCTCGAGCAGAACTCATCTCAGAAGAGGATCTGGCAGCAATGATATCCTGGATT  
ACAAGGATGACGACGATAAGGTTTAA

Protein Sequence: >RR206647 representing NM\_001107952  
 Red=Cloning site Green=Tags(s)

```

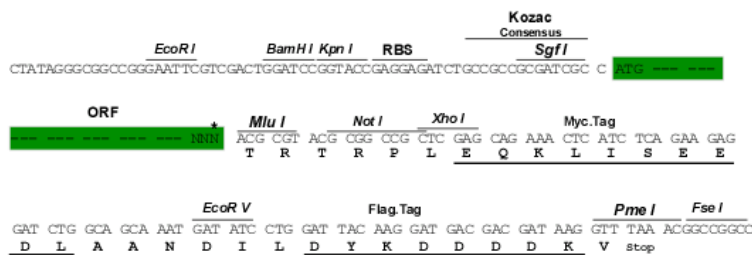
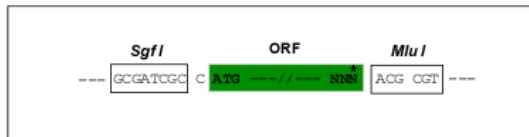
MENYFQAEAYNLDKVLDEFEQNEDETVSPTLLDTKWNKILDSSSHPLSFNPALANVNEPTISNETGPQRK
IFSLAGSAPLTREGKGPCANGQDGLNPEIDTMWIDENAVAEDQLIKRNYNQDDQFSAVEVGEKRGSLT
CLPDEKNVLLVAVMHNC DKRTLQSDLQDCNNYNSQSLMDSFSCSLDNETRQTDQFSFSMNGSAEKGINSE
KQMDALNPKSERDSLNLHLCAASANSATSISSSSQ LKDNENVGRDPSTSTATSLAINTSQMGDGGPAIKK
QEDYMPDEDLSGANSSRDLGSSNSF SHSREELLTKTEPAEERTAEDPLPSGLSLNLKPDTPALCGRDN
CEPSSDCLVSSSETRTDGDDGKDSQTTHWDSAKLNEVDDRQGEENQVVLQISQPEDPQSAGCEVRMADSD
LDFKGTCLNESEG YDFSTVSDAPAANSLNSCDSYGMQSPIVSFVPKTLPSKEDSVTEEKIEESKSECY
SNLYEQRGNENTEGNLLL NSTGTIMKKNYLHNFCSQIPSVLGQSSPKIANLQSI SVPFGGARPKQPSNL
KLQIPKPLSDHLQNDLPANNGNNSKNKNDILGKAKLGENS AVSACSATLGNISVTDNNGEHLSEFEADIS
SRPCLALSPDSPNDLRAGQFGISARKPFTTLGEVAPVWVPDSQAPNCMKCEARFTFKRRHHCACRCKV
FCASCCSLKCKLLYMDRKEARVCVICHSVLMNAQAWENMMSASSQSPNPNPAEYCS TIPPLQQAQASGA
LSSPPPTVMVPVGV LKHPGTEVPQPREQRRVWFADGILPNGEVADAAKLTMNGTSSAGTLAVSHDPVKPV
ATSPLPAEADVSLFSGSITQVGSVPVGSAMNLIPE DGLPPILISTGVKGDYAVEEKPSQISVMQQLDGGP
DPLVFVLANLLSMVKIVNYVNRKWCWFTTKGMH AVGQSEIVILLQCLPDEKCLPKDIFNHVQLYRDAL
AGSVVGS LGHSFFSQSFLGSKEHGGFLYMTSTHQSLQD LLLPTPPYLFGLIQKWETPWAKVFPIRMLR
LGAEYRLYPCPLFSVFRKPLFGETGHTIMNLLADFRNYQYTLPGVQGLVVDMEVRKTSIKIPSNRYNEM
MKAMNKSNEHVLAGGACFNEKADSHLVCVQND DGNYQTQAISIHNQPRKVTGASFFVFSGALKSSSGYLA
KSSIVEDGVMVQIT AENMDSL RQALREMKDFTITCGKAD AEDPQEIQIHIQWVDDDKTVNKGVVSPIDGKS
MESITNVKIFHGSEYKANGKVIRWTEVFFLENDHRTCLSDPADHSRLTEHVAKAFCLALCPHLKLLKED
GMTKLGRLRVTLDS DQVGYQAGSNGQPLPSQYMKDLD SALVPVIHGACQLSEGPVGIELIFYILENIA

TRTRPLEQKLISEEDLAANDILDYKDDDDKV
  
```

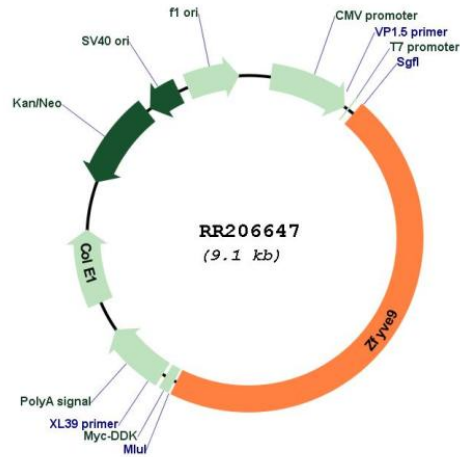
Restriction Sites:  
Cloning Scheme:

SgfI-MluI

Cloning sites used for ORF Shutting:



\* The last codon before the Stop codon of the ORF

**Plasmid Map:**


**ACCN:** NM\_001107952

**ORF Size:** 4194 bp

**OTI Disclaimer:** The molecular sequence of this clone aligns with the gene accession number as a point of reference only. However, individual transcript sequences of the same gene can differ through naturally occurring variations (e.g. polymorphisms), each with its own valid existence. This clone is substantially in agreement with the reference, but a complete review of all prevailing variants is recommended prior to use. [More info](#)

**OTI Annotation:** This clone was engineered to express the complete ORF with an expression tag. Expression varies depending on the nature of the gene.

**Components:** The ORF clone is ion-exchange column purified and shipped in a 2D barcoded Matrix tube containing 10ug of transfection-ready, dried plasmid DNA (reconstitute with 100 ul of water).

**Reconstitution Method:**

1. Centrifuge at 5,000xg for 5min.
2. Carefully open the tube and add 100ul of sterile water to dissolve the DNA.
3. Close the tube and incubate for 10 minutes at room temperature.
4. Briefly vortex the tube and then do a quick spin (less than 5000xg) to concentrate the liquid at the bottom.
5. Store the suspended plasmid at -20°C. The DNA is stable for at least one year from date of shipping when stored at -20°C.

**RefSeq:** [NM\\_001107952.1](#), [NP\\_001101422.1](#)

**RefSeq Size:** 6457 bp

**RefSeq ORF:** 4197 bp

**Locus ID:** 313477

**Cytogenetics:** 5q34

MW: 152.4 kDa