

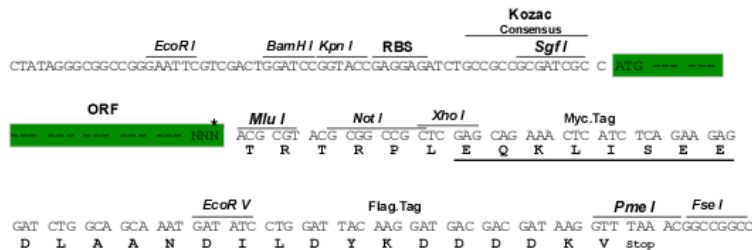
## Product datasheet for RR206583

### Fap (NM\_138850) Rat Tagged ORF Clone

#### Product data:

Product Type: Expression Plasmids  
 Product Name: Fap (NM\_138850) Rat Tagged ORF Clone  
 Tag: Myc-DDK  
 Symbol: Fap  
 Mammalian Cell Selection: Neomycin  
 Vector: pCMV6-Entry (PS100001)  
 E. coli Selection: Kanamycin (25 ug/mL)  
 Restriction Sites: SgfI-MluI  
 Cloning Scheme:

Cloning sites used for ORF Shuttling:



\* The last codon before the Stop codon of the ORF

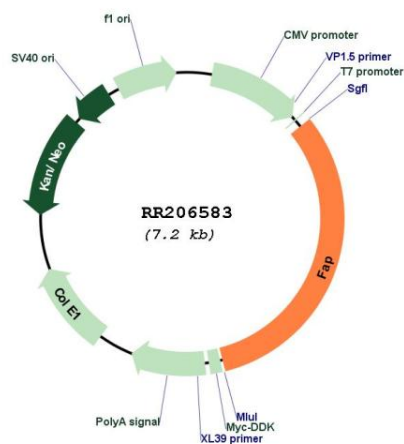
ACCN: NM\_138850  
 ORF Size: 2283 bp



[View online >](#)

<b>OTI Disclaimer:</b>	The molecular sequence of this clone aligns with the gene accession number as a point of reference only. However, individual transcript sequences of the same gene can differ through naturally occurring variations (e.g. polymorphisms), each with its own valid existence. This clone is substantially in agreement with the reference, but a complete review of all prevailing variants is recommended prior to use. <a href="#">More info</a>
<b>OTI Annotation:</b>	This clone was engineered to express the complete ORF with an expression tag. Expression varies depending on the nature of the gene.
<b>Components:</b>	The ORF clone is ion-exchange column purified and shipped in a 2D barcoded Matrix tube containing 10ug of transfection-ready, dried plasmid DNA (reconstitute with 100 ul of water).
<b>Reconstitution Method:</b>	<ol style="list-style-type: none"><li>1. Centrifuge at 5,000xg for 5min.</li><li>2. Carefully open the tube and add 100ul of sterile water to dissolve the DNA.</li><li>3. Close the tube and incubate for 10 minutes at room temperature.</li><li>4. Briefly vortex the tube and then do a quick spin (less than 5000xg) to concentrate the liquid at the bottom.</li><li>5. Store the suspended plasmid at -20°C. The DNA is stable for at least one year from date of shipping when stored at -20°C.</li></ol>
<b>RefSeq:</b>	<a href="#">NM_138850.1</a> , <a href="#">NP_620205.1</a>
<b>RefSeq Size:</b>	2293 bp
<b>RefSeq ORF:</b>	2286 bp
<b>Locus ID:</b>	192203
<b>Cytogenetics:</b>	3q21
<b>MW:</b>	87.8 kDa
<b>Gene Summary:</b>	plays a role in liver disease, T cell costimulation, chemokine biology, type II diabetes, and tumor biology [RGD, Feb 2006]

Product images:



Circular map for RR206583