

Product datasheet for **RR206569**

Abcc9 (NM_013040) Rat Tagged ORF Clone

Product data:

Product Type: Expression Plasmids
 Product Name: Abcc9 (NM_013040) Rat Tagged ORF Clone
 Tag: Myc-DDK
 Symbol: Abcc9
 Synonyms: Sur2
 Vector: pCMV6-Entry (PS100001)
 E. coli Selection: Kanamycin (25 ug/mL)
 Cell Selection: Neomycin
 ORF Nucleotide Sequence: >RR206569 representing NM_013040
 Red=Cloning site Blue=ORF Green=Tags(s)

TTTTGTAATACGACTCACTATAGGGCGGCCGGAATTCGTCGACTGGATCCGGTACCGAGGAGATCTGCC
 GCC**GCGATCGCC**

ATGAGCCTTTCTCTGTGGTAAACAACATCTCCTCCTACAACATCTACCATGGTGTCTCCAAAACCCCT
 GCTTTGTGGAGCAGCACTCAACCTGGTCCCTCACGTCTTCTGCTGTTTATCACCTTCCGATCCTGTTTCAT
 TGGATGGGGGAGCCAAAGCTCAAAGTGCAAATTCATCACAACACATGGCTTCATTTTCTGGACACAAC
 CTGAGATGGATTCTGACGTTTGCCTCTGTTTGTGCATGTCTGCGAGATAGCAGAAGGCATTGTTTCAG
 ACTCGCAACGGGCGTCCAGGCATCTCCACCTTTTCATGCCGGCTGTGATGGGATTGTGCGCCACCACCAC
 ATCCATTGTGATTACCACAACATTGAAACATCAAACCTCCCTAAATTACTTTTAGCTTTATTCTGTGAC
 TGGGTCATGGCCTTCATTACAAAGACAATAAAGTTGGTCAAATACTGGCAGTTGGGGTGGGGGATGTCAG
 ACCTGCGCTTCTGCATCACGGGAGTGATGGTCACTTGAATGGACTGCTGATGGCTGTGGAGATCAATGT
 CATCCGGTCCGAAGATATGTTTCTTCATGAATCCTCAGAAAGTGAAGCCTCCAGAGGACCTCCAGGAC
 CTGGGCGTGAGGTTCTCCAGCCGTTTGTGAATTTGCTGTCAAAGCTACTTACTGGTGGATGAACACGC
 TTATCATATCAGCTCACAGGAAACCTATTGATCTGAAGGCGATCGGAAAGTTGCCGATAGCAATGAGGGC
 GGTGACGAATTATGTTTCTTGAAGGAGGCTACGAAGAGCAGAAGAAAAGGCTGCGGATCATCCGAAT
 CGGACTCCCTCCATATGGCTGGCCATGTACAGGGCTTTTGGGAGACCGATCCTGTGAGCAGCACGTTCC
 GCTACTTGGCTGACTTGTGGGCTTTGCCGGCCCTCTTTGTATTTCCGGAATCGTCCAGCGTGTGAATGA
 ACCGAAGAATAACACGACGAGATTTTTCAGAGACTCTCATCAAAGGAGTTTCTGGAAAATGCCCATGTG
 CTGGCTGTCTGCTCTTCTGGCCCTCATCCTGCAAAGAACATTTTTCAGGCTTCGACTATGTGACCA
 TAGAGACCGGCATCAACCTGCGTGGGCTCTGCTGGCTATGATCTACAACAAAATCCTTCGACTGTCTAC
 TTCTAACCTATCCATGGCGGAGATGACCCTGGGACAGATCAACAACCTGGTTGCCATAGAAACCAATCAG
 CTCATGTGTTCTTGTCTGTGTCCCAATCTGTGGGCCATGCCGTTCCAGATCATAATGGGGGTGATCC
 TGCTCTATAATCTGCTTGGGTCAAGCGCACTGGTAGGCGCGCGGTCATCGTGCTCCTCGCACCGATTCA
 GTACTTATCGCCACGAAGCTGGCGGAGGCTCAGAAGAGCACTCTGGATTATTCCACCGAGAGGCTGAAG
 AAGACAAACGAGATACTGAAAGGCATCAAGCTCCTAAGCTGTATGCCTGGGAGCACATTTTCTGCAAGA



[View online »](#)

GCGTGAAGAGACTAGAATGAAGGAGCTCTCCAGCCTCAAACCTTCGCGCTCTACACGTCGCTTCCAT
CTTCATGAACGCAGCCATTCCCATCGCAGCCGTTCTTGCAACATTTGTGACCCATGCCTATGCCAGTGGC
AACAACTGAAACCCGCAGAGGCCCTTGGCTCTGTCTCTTCCACATCCTCGTCACACCCGCTTTC
TGCTGTCCACGGTGGTCAGATTCGCAGTGAAAGCCATCATCAGCGTTCAGAAGCTGAATGAGTTTCTCT
GAGCGATGAGATTGGCGAGGACAGCTGGAGGACTGGGGAGGGGACGCTGCCTTTTGTGTCCTGTAAGAAG
CACACCCGAGTGCAATCAAACCGATAAACAGGAAGCAGCCTGGAAGGTACCACCTGGACAACACGAGC
AGGCGCGCGCTTTCGGCTGTGAGACTGAAGATGTTGCCATAAAGGTGACGAACGGATACTTCTCATG
GGCAGTGGTTTAGCCACATTATCCAATATTGACATTGCAATTCCAACAGGTCAGCTAACCATGATTGTG
GGTCAGGTGGTTGTGGCAAATCGTCTCTCCTCCTTGGCCATCCTTGGTGAGATGCAGACCCTGGAAGGAA
AAGTTTACTGGAACAATGTAATGAATCTGAGCCTTCTTTTGAAGCAACCCGAAGCAGAAGCAGGTA
TGTGGCTTATGCTGCCAGAAGCCTTGGCTCCTCAATGCTACGGTCGAGGAAAACATCACTTTTGGAA
TCTTTCAACAGACAGAGGTACAAGGCTGTACCGATGCCTGTCTCTGCAGCCAGACATTGATTTGTAC
CCTTTGGAGACAAACTGAAATGGAGAGAGGGGTATCAACCTGAGTGGGGTGCAGGCCAGAGAATCTG
CGTGGCCCGGCACTCTACCAGAACACCAATATTGTCTTCTTGGACGATCCATTCTCGCTCTGGACATC
CACCTGAGCGACCACTTGTGTCAGGAAGGGATCCTGAAGTTTCTCCAGGACGACAAGAGGACGGTCTG
TTGTGACTCACAACACTACAGTACCTGACGCACGGGACTGGATCATAGCCATGAAGGATGGGAGTGTGT
AAGGGAAGGGACTTTGAAAGACATCCAGACCAAAGACGTGGAGCTCTATGAACACTGGAACCCCTCATG
AATCGGCAAGATCAGGAATTAGAAAAGGACATGGAAGCCGACAAACAACGCTGGAGAGGAAGACTCTCC
GAAGAGCTATGTACTCAAGGGAGGCCAAAGCACAGATGGAGGATGAAGATGAAGAGGAGGAGGAGGGA
AGATGAGGACGACAACATGTCAACTGTAATGAGGCTCAGGACGAAGATGCCCTGGAAGACCTGTTGGTGG
TACCTCACTTCAGGAGGGTTTTCTGCTTCTCCTCATGATCTTCTAAGCTTTTGAAGCACTCTGTGA
TCGTGGCCATCGACTACTGGCTAGCTACGTGGACCTCCGAGTACAGTATAAACGACCCAGGGAAGCTGA
CCAGACCTTCTATGTGGCTGGTTCAGCATCCTCTGTGGAGCGGGCAATTTCTTTGCCTCGTCACTCC
CTCACTGTAGAATGGATGGTCTCACCGCGCCAAGAACCTCCACCACAATCTCCTCAATAAGATAATTC
TGGGCCAATAAGGTTCTTTGATACCACGCCCTGGGACTGATCCTCAATCGGTTTTCTGCTGATACCAA
CATCATCGACCAACATATCCCTCCGACCTTGGAGTCGCTGACCCGCTCTACCCTGCTCTGCTGTGCGCT
ATTGGGATGATCTCCTATGCTACACCCGTGTTTCTCATGCTCTTGCGCCCTGGGCGTCGCTTTTATT
TCATCCAGAAATACTTCCGGTTGCCTCTAAGGATCTCCAGGAACCTGATGACAGCACCCAGCTCCCT
GCTTTGCACTTCTCAGAAACAGCTGAAGGGCTTACCCTATCCGGGCTTCCAGGATGAAACCAGATTC
AAGCAACGCATGTGGAGCTGACAGACACAACAACATGCTACTTATTTCTCTCCGACCCAACAGAT
GGCTGGAGGTCAGGACGACTACCTGGGAGCTTGCAATTGTCTGACGGCCTCCATTGCATCCATCAGTGG
CTTCCAACTCTGACTAGTGGCTTGGGCTTCTGTATGCCCTCACGATAACCAATTACCTGAATTGG
GTTGTAAGGAACTTGGCCGACCTCGAAGTCCAGATGGGCGCAGTGAAGAAAGTGAACAGTTTCTTA
TGGAGTCTGAGAACTATGAAGGCACCATGGATCCTTCTCAAGTCCCAGAGCATTGGCCACAGGAAGTGA
GATCAAGATTCACGATCTATGCGTCAGATATGAAAATAACCTGAAGCCGTTCTGAAACATGTCAAGGCT
TACATCAAGCCTGGGCAGAAAGTGGGCATCTGTGGTCGCACCCGTAGTGGGAAGTCTCTATCTCTGG
CTTTCTCAGAATGGTCGACATATTTGATGGAAGATAGTCATTGATGGAATAGACATTTCCAAGCTGCC
CTTGCACACGCTCCGCTCTAGACTGTCCATCATTCTCCAGGACCAATCCTGTTCCAGCGGCTCTATCAGA
TTAACTTGGATCCTGAATGCAAGTGCACAGACGACAGGCTCTGGGAGGCTCTGGAATTTGCTCAGTTGA
AGAATATGGTCAAATCTCTGCCAGGAGGCTAGACGCCACTGTCACCGAAGGTGGTGAGAACTTCAGCGT
TGGACAGAGACAGCTGTTCTGCCTGGCCAGGGCTTTGTTGAAAAGAGCAGCATACTCATTATGGATGAG
GCCACGGCTCCATCGACATGGCCACGGAAAACATTTTGCAGAAAGTAGTCATGACAGCCTTTGCGGATC
GCACGGTTGTAACCATAGCTCATCGGGTTCACACCATTCTGACTGCTGACCTGGTATTGTGATGAAGAG
AGGAAACATTTTGAATACGACACCCCGAAAAGCCTTTGGCCAGGAGGATGGAGTGTTCGCTCGTTC
GTTCTGTCGGACATG

ACGCGTACGCGGCCGCTCGAGCAGAACTCATCTCAGAAGAGGATCTGGCAGCAAATGATATCCTGGATT
ACAAGGATGACGACGATAAGGTTTAA

Protein Sequence: >RR206569 representing NM_013040
 Red=Cloning site Green=Tags(s)

```

MSLSFCGNNISSYNIYHGVLQNPCFVDALNLVPHVFLFITFPILFIGWGSQSSKVQIHHNTWLHFPGHN
LRWILTFALLFVHVCEIAEGIVSDSQRASRHLHLMFPAVMGFVATTTISIVYYHNIETSNFPKLLALFLY
WYMAFITKTIKLVKYWQLGWGMSDLRFICITGMVILNGLLMAVEINVIRVRRYVFFMNPQKVKPPEDLQD
LGVRFLOPFVNLLSKATYWMNTLII SAHRKPIDLKAIGKLP IAMRAVTNYVCLKEAYEEQKKAADHPN
RTPSIWLMYRAFRPILLSSTFRYLADLLGFAGPLCISGIVQRVNEPKNNTTRFSETLSSKEFLENAHV
LAVLLFLALILQRTFLQASYYVTIETGINLRGALLAMIYKNILRLSTSNLSMGEMTLGQINNLVAIETNQ
LMWFLFLCPNLWAMPVQIIMGVILLNLLGSSALVGAIVLLAPIQYFIATKLAEAQKSTLDYSTERLK
KTNEILKGIKLLKLYAWEHIFCKSVEETRMKELSSLKTFALYTSLSIFMNAAPIAAVLATFVTHAYASG
NNLKPAEAFASLSLPHILVTPLFLLSTVRFVAVKAIISVQKLNELLDEIGEDSWRTGEGTLPFESCKK
HTGVQSKPINKQPGRYHLDNYEQARRLRPAETEDVAIKVTNGYFSWGSGLATLSNIDIRIPTGQLTMIV
GOVCGKSSLLLAILEMOTLEGKVVWNNVNESEPSFEATRSRSRYSVAYAAQKPWLLNATVEENITFGS
SFNRQRYKAVTDACSLQPDIDLDPFGDQTEIGERGINLGGQRQRCVARALYQNTNIVFLDDPFSALDI
HLDSDLMQEGILKFLQDDKRTVVLVTHKLQYLTHADWIIAMKDGSVLREGTLKDIQTkdVELYEHWKTLM
NRQDQELEKDMEDQTTLERKTLRRAMYSREAKAQMEDEDEEEEEDEDDNMSTVMRLRTKMPWKTCCW
YLTSGGFFLLFLMIFSKLLKHSVIVAIDYWLATWTSEYSINDPGKADQTFYVAGFSILCGAGIFLCLVTS
LTVEWMGLTAAKNLHHNLLNKIILGPIRFDDTTPGLILNRF SADTNIIDQHIPPTELES TRSTLLCLSA
IGMISYATPVFLIALAPLGVAFYFIQKYFRVASKDLQELDDSTQLPLLCHFSETAEGLTTRAFRHETRF
KQRMLELTDTNIAYLFLSAANRWLEVRTDYLGACIVLTASIASISGSSNSGLVGLLLYALTITNYLW
VVRNLADLEVQMGAVKKVNSFLTMESENYEGTMDPSQVPEHWPQEGEIKIHDLCVRYENNLKPVLKHVKA
YIKPGQKVICGRTGSGKSSLSLAFFRMVDIFDGKIVIDGIDISKLPHLTLRSLSIILQDPILFSGSIR
FNLDPECKCTDDRLWEALEIAQLKNMVKSLPGGLDATVTEGGENFSVGQRQLFCLARAFVRKSSILIMDE
ATASIDMATENILQKVMTAFADRTVVTIAHRVHTILTADLVIVMKRGNILEYDTPESLLAQEDGVFAS
VRADM
  
```

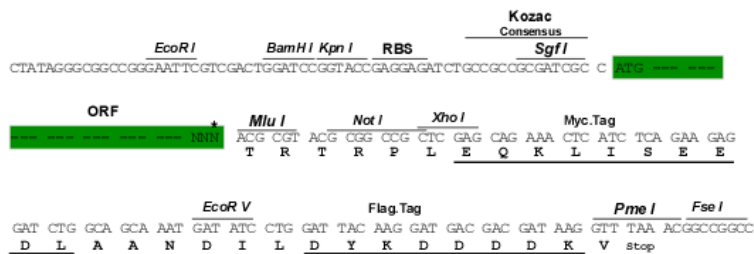
TRTRPLEQKLISEEDLAANDILDYKDDDDKV

Restriction Sites:

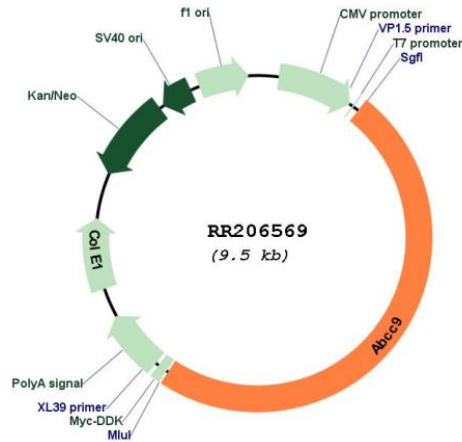
SgfI-MluI

Cloning Scheme:

Cloning sites used for ORF Shuttling:



* The last codon before the Stop codon of the ORF

Plasmid Map:


ACCN: NM_013040

ORF Size: 4635 bp

OTI Disclaimer: The molecular sequence of this clone aligns with the gene accession number as a point of reference only. However, individual transcript sequences of the same gene can differ through naturally occurring variations (e.g. polymorphisms), each with its own valid existence. This clone is substantially in agreement with the reference, but a complete review of all prevailing variants is recommended prior to use. [More info](#)

OTI Annotation: This clone was engineered to express the complete ORF with an expression tag. Expression varies depending on the nature of the gene.

Components: The ORF clone is ion-exchange column purified and shipped in a 2D barcoded Matrix tube containing 10ug of transfection-ready, dried plasmid DNA (reconstitute with 100 ul of water).

Reconstitution Method:

1. Centrifuge at 5,000xg for 5min.
2. Carefully open the tube and add 100ul of sterile water to dissolve the DNA.
3. Close the tube and incubate for 10 minutes at room temperature.
4. Briefly vortex the tube and then do a quick spin (less than 5000xg) to concentrate the liquid at the bottom.
5. Store the suspended plasmid at -20°C. The DNA is stable for at least one year from date of shipping when stored at -20°C.

RefSeq: [NM_013040.2](#), [NP_037172.2](#)

RefSeq Size: 6628 bp

RefSeq ORF: 4638 bp

Locus ID: 25560

UniProt ID: [Q63563](#)

Cytogenetics: 4q44

MW: 174.3 kDa

Gene Summary: ATP-sensitive potassium channel subunit that confers ATP sensitivity and acts as receptor for sulfonylurea; may play a role in mesangial cell contractility in response to calcium ion transients [RGD, Feb 2006]