

Product datasheet for **RR206563**

Ikbbk (NM_053355) Rat Tagged ORF Clone

Product data:

Product Type:	Expression Plasmids
Product Name:	Ikbbk (NM_053355) Rat Tagged ORF Clone
Tag:	Myc-DDK
Symbol:	Ikbbk
Synonyms:	AIM-1; IKK2
Vector:	pCMV6-Entry (PS100001)
E. coli Selection:	Kanamycin (25 ug/mL)
Cell Selection:	Neomycin



[View online »](#)

ORF Nucleotide Sequence:

>RR206563 representing NM_053355
 Red=Cloning site Blue=ORF Green=Tags(s)

CTATAGGGCGGCCGGGAATTCGTCGACTGGATCCGGTACCGAGGAGATCTGCCGCCGCGATCGCCGGCGC
 GCC

ATGAGCTGGTACCTTCTCTCCCAACCCAGACATGTGGGCGCTGGGAAATGAAAGAACGCCCTCGGAAGT
 GGGGATTTGGAAACGTCAATCCGGTGGCACAATCAGGTGACAGGTGAACAAATTGCCATCAAGCAATGCCG
 ACAGGAGCTCAGCCCAAGAACCAGCGATCGCTGGTGCCTAGAGATCCAGATCATGAGAAGCTGAACCAT
 CCCAACGTGGTGGCCGCCGGGATGTCCAGAGGGGATGCAGAACTTGGCACCCAATGATTTGCCTCTGC
 TGGCCATGGAGTACTGCCAAGGAGGAGACCTCCGGAGATACTTGAACCAGTTCGAAAAGTCTGTGGCCT
 CCGGGAAGGAGCCATCCTCACCTGCTGAGTGACATAGCATCGGCTCTTAGATACCTTCATGAAAACAGA
 ATCATCCACCGGACCTGAAGCCAGAGAATTGTCTACAGCAAGGAGAGAAAAGATTAATACACAAAA
 TTATTGATCTAGGATATGCCAAGGAGCTGGATCAGGGCAGTCTGTGCACGTCATTTGGGGACCCTGCA
 ATACCTGGCCCCAGAGCTTCTGGAGCAGCAGAAGTACACCGTACTGTTGACTACTGGAGCTTCGGCACC
 CTGGCCTTTGAATGCATACCCGGCTTCCGGCCCTTCTCCCTAACTGGCAGCCTGTGCAGTGGCACTCTA
 AAGTCCGGCAGAAGAGCGAAGTGGACATTTGTTGTTAGCGAGGACTTGAACGGAACAGTGAAGTTCTCAAG
 TTCCTTACCCTTCCCAATAATCTCAACAGTGTCTGGCTGAGCGTCTGGAGAAGTGGCTTTCAGCTGATG
 CTCACGTGGCAACCTCGGCAAAGGGGCTGGACCCCCAGTACGGTCCCAATGGCTGTTTCAGGGCCCTCG
 ATGACATCTTGAACCTAAAGCTGGTTTATATCTTGAACATGGTTCACAGGCACCATTCACACATACCTGT
 GATGGAGGATGAAAGTCTGCAGAGCTTAAAAACCAAGATCCGGGAAGACACAGGGATCCTGGAGACAGAC
 CAGGAACTGCTGCAGGAGGCAGGGCTGGTGTCTCCCTGACAAGCCTGCTACTCAGTGCATCTCAGACA
 GCAAGACAAATGAGGGCCTCACACTGGACATGGATCTCGTCTTTCTTTGACAACAGTAAAATGTCCTA
 TGAGACTCAGATACCCCCGACCCCAACTGAGAGCGTCAAGTGTGTCCTTCAGGAGCCCAAGCGGAAC
 CTCTCCTTCTTCCAGATGAGGAAAGTGTGGGGCCAAGTCTGGCACAGCATCCAAACGCTGAAGGAAGACT
 GTAACCGGCTGCAGCAGGGACAGCGAGCTGCCATGATGAACCTCCTTCGGAATAACAGCTGCCTCTCCAA
 GATGAAGAATGCCATGGCCTCCACGGCGCAGCAGCTCAAGGCCAAGTTGGACTTCTTCAAAACAGCATC
 CAGATTGACCTGGAGAAGTACAGGGAGCAGACGGAGTTTGGCATCACATCGGACAACTGCTGCTGGCCT
 GCGGGAAATGGAGCAGGCCGTGGAGCAGTGTGGGCGGGAATGACGTGAAGTCTTGGTGAACGGAT
 GATGGCACTGCAGACCGACATTGTGGACCTACAGAGGAGCCGATGGGTGGAAGCAGGGGGCACCTTG
 GATGACCTAGAGGAACAAGCAAGAGAATCTACAGAAGACTCAGGAGAAAGCAAGAGACCAAGGACAG
 AAGGTGACAGCCAGGATATGGTACGGCTGCTGCTGCAAGCCATCCAGAGCTTCGAGAAGAAAGTGCGGGT
 GATTTACTCTCAGCTCAGTAAGACCGTGGTTTGTAAAGCAGAAGGCCCTGGAGCTGCTGCCAAAAGTAGAA
 GAGGTGGTGGGCTCATGAACGAGGATGAGAAGACTGTGGTCCGGCTCCAGGAGAAGCGGAGAAGGAGC
 TCTGGAACCTCCTGAAGATCGCCTGTAGCAAAGTCCGAGGTCCGGTGAAGTGAAGCCAGATAGCATGAA
 TGTGTCTCGACTTAGTACCCTGGTATCTAATGTCCCAGCCTTCCAGTGCCTGTGACAGCTTACCTGAT
 TCAGACAAGAAAAGTGAAGAAGTGGTGGCCGAAGCACACGCCCTCTGCTCCCGGCTGGAAGCGCGCTGC
 AGGACACGGTGAAGCAGCAGGACCGAAGCTTACAGACCTAGACTGGAGCTGGTTACAGATGGAGGATGA
 AGAAAGGTGTGGCCTGGAGCAGGCTGTGAC

ACGCGTACGCGGCCGCTCGAGCAGAACTCATCTCAGAAGAGGATCTGGCAGCAATGATATCCTGGATT
 ACAAGGATGACGACGATAAGGTTTAA

Protein Sequence: >RR206563 representing NM_053355
 Red=Cloning site Green=Tags(s)

MSWSPSLPTQTCGAWEMKERLGTGGFGNVIRWHNQVTGEQIAIKQCRQELSPKNRDRWCLEIQIMRRLNH
 PNVVAARDVPEGMQNLAPNDLPLLAMEYCQGGDLRRYLNQFENCCLREGAILTLLSDIASALRYLHENR
 I IHRDLKPENIVLQQGEKRLIHKIIDLGYAKELDQGSLECTSFVGTLYLAPELLEQQKYTVTVDYWSFGT
 LAFECITGFRPFLPNWQPVQWHSKVRQKSEVDIVVSEDLNGTVKFSSSLFPNNLNSVLAERLEKWLQLM
 LTWQPRQRGVDPQYGPNGCFRALDDILNLKLVHILNMVTGTIHTYPMVEDESLQSLKTRIREDTGILETD
 QELLQEAGLVLLPDKPATQCISDSKTNEGLTLDMDLVFLFDNSKMSYETQITPRPQESVSCVLQEPKRN
 LSFFQMRKVWQVWHSIQTLKEDCNRLQQGQRAAMNLLRNNSCLSKMKNAMASTAQQLKAKLDFFKTSI
 QIDLEKYREQTEFGITSDKLLLAWREMEQAVEQCQGRENDVKLVVERMMALQTDIVDLQRSPMGRKQGGTL
 DDLEEQARELYRRLREKPRDQRTEGDSQDMVRLLLQAIQSFEEKVRVIYSQLSKTVVCKQKALELLPKVE
 EVVRLMNEDEKTVVRLQEKQKELWNLLKIACSKVRGPVSGPDSMNVSRLSHPGHLMSQPSSACDSLDP
 SDKKSEELVAEHALCSRLESALQDTVQQRSTTLDWSWLQMEDEERCGLQACD

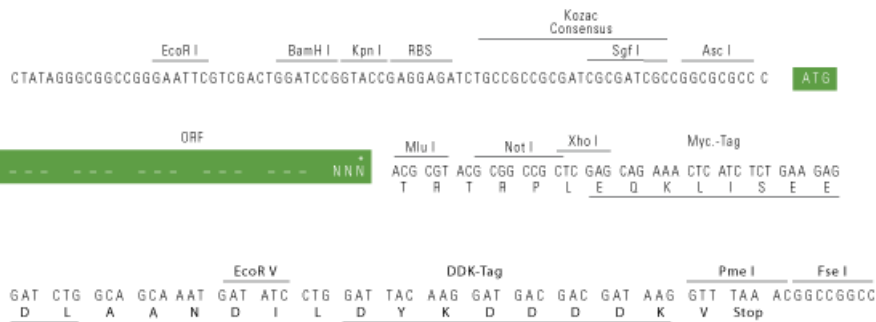
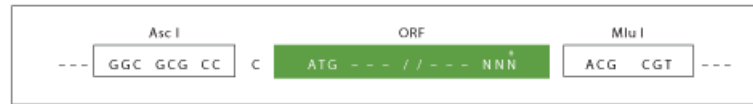
TRTRPLEQKLISEEDLAANDILDYKDDDDKV

Restriction Sites:

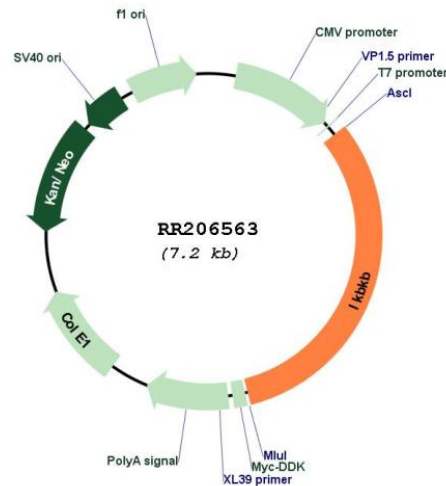
AscI-MluI

Cloning Scheme:

Cloning sites used for ORF Shuttling:



* The last codon before the Stop codon of the ORF

Plasmid Map:


ACCN: NM_053355

ORF Size: 2271 bp

OTI Disclaimer: The molecular sequence of this clone aligns with the gene accession number as a point of reference only. However, individual transcript sequences of the same gene can differ through naturally occurring variations (e.g. polymorphisms), each with its own valid existence. This clone is substantially in agreement with the reference, but a complete review of all prevailing variants is recommended prior to use. [More info](#)

OTI Annotation: This clone was engineered to express the complete ORF with an expression tag. Expression varies depending on the nature of the gene.

Components: The ORF clone is ion-exchange column purified and shipped in a 2D barcoded Matrix tube containing 10ug of transfection-ready, dried plasmid DNA (reconstitute with 100 ul of water).

Reconstitution Method:

1. Centrifuge at 5,000xg for 5min.
2. Carefully open the tube and add 100ul of sterile water to dissolve the DNA.
3. Close the tube and incubate for 10 minutes at room temperature.
4. Briefly vortex the tube and then do a quick spin (less than 5000xg) to concentrate the liquid at the bottom.
5. Store the suspended plasmid at -20°C. The DNA is stable for at least one year from date of shipping when stored at -20°C.

RefSeq: [NM_053355.2](#), [NP_445807.2](#)

RefSeq Size: 3557 bp

RefSeq ORF: 2274 bp

Locus ID: 84351

UniProt ID: [Q9QY78](#)
Cytogenetics: 16q12.5
MW: 86.9 kDa
Gene Summary: kinase that may be involved in megakaryocyte polyploidization [RGD, Feb 2006]