

Product datasheet for **RR206532**

Pde5a (NM_133584) Rat Tagged ORF Clone

Product data:

Product Type:	Expression Plasmids
Product Name:	Pde5a (NM_133584) Rat Tagged ORF Clone
Tag:	Myc-DDK
Symbol:	Pde5a
Synonyms:	PDE5A2
Vector:	pCMV6-Entry (PS100001)
E. coli Selection:	Kanamycin (25 ug/mL)
Cell Selection:	Neomycin



[View online »](#)

ORF Nucleotide
Sequence:

>RR206532 representing NM_133584
 Red=Cloning site Blue=ORF Green=Tags(s)

TTTTGTAATACGACTCACTATAGGGCGGCCGGAATTCGTCGACTGGATCCGGTACCGAGGAGATCTGCC
 GCC**CGGATCGCC**

ATGTTGCCCTTTGGAGACAAAACGAGAGACATGGTCAATGCATGGTTTTTCAGAGAGAGTTACAACATTC
 CTGTGTGCAAGGAAGGCATCCGGGCCACACCGAGTCCTGCTCTTCTCTCTGCCTCAAAGTCCTCATGC
 AGATAATACCACCCTGGAGCACCAGCCAGAAAAATCTCTGCCTCTGAATTTGACCGACCTTTAGACCC
 ATTGTTGTCAAGGATTCTGAGGGAACCGTGAGCTTTCTCTCTGACTCAGGAAAAAGGAACAGATGCCAC
 TAACCTCTCCAAGATTTGATAGTGATGAAGGGACCACTGCTCAAGACTCTTGGAACTAGTAAAAGATAT
 TTCCAGTCATTTGGATGTCACAGCCTTGTGTCACAAAAATTTCTTGCATATCCATGGACTTATCTCTGCT
 GATCGCTATTCCTGTTCTTGTCTGTGAGGACAGCTCTAAAGACAAAATTTCTCGTCAGTCGCCTTTTG
 ATGTTGCTGAAGTTCAACACTGGAGGAAGCTTCAAATAACTGTATCCGTTTGAATGGAACAAAGGCAT
 TGTGGGACATGTGGCAGCTTTTGGAGAGCCCTTGAACATCAAAGATGCCTATGAGGATCCCCGGTTCAAT
 GCAGAAGTTGACCAAAATACAGGCTACAAGACACAAAATATCCTTTGTATGCCAATTAAGAACCACAGGG
 AAGAGGTCGTTGGTGTAGCTCAGGCCATCAACAAGAAATCAGGAAACGGTGGGACATTCAGTAAAAAGA
 TGAAAAGGACTTTGCTGCCTATCTGGCATTGTGGCATTGTTCTTCAACCGCCAGCTCTATGAAACG
 TCACTGCTGGAGAACAAAAGAAATCAGGTATTACTTGACCTTGCTAGCTTAATTTTCGAGGAGCAGCAGT
 CATTGGAAGTAATTTGAAGAAAATAGCCGCCACTATTATCTCCTTATGCAGGTGCAGAAGTGCACCAT
 CTTTCATCGTGGATGAAGACTGCCCTGACTCGTTCTCTCGTGTGTTCAAATGGAGTGGGAGGAAGTAGGG
 AAATCCTCCGAGCCTTTGACAAGGGAGCACGATGCAACAAAAATCAATTACATGTATGCTCAGTATGTCA
 AAAACACGATGGAGCCACTTAATATCCCAGATGTCACCAAGGACACAGATTTCCCTGGACAAATGAAAA
 CATGGGCCATATAAACACGCACTGCATCAGAAGTTTGTCTTGCACGCCTATAAAAAATGGGAAGAAGAAC
 AAAGTCATAGGGTTTGGCAACTTGTAAATAAGATGGAGGAGAAGACTGGCAAGATTAAGGCTTTCAACC
 AAAACGATGAACAATTCCTGGAGGCTTTTGTCTCTTCTGTGGCTTGGGGATCCAGAACACACAGATGTA
 CGAAGCGGTGGAGAGAGCCATGGCCAAGCAGATGGTGACGTTAGAGGTCCTGTCTTATCACGCATCAGCG
 GCGGAGGAAGAAACAAGGGAGCTCCAGGCTCTAGCGGCTGCTGTGGTACCGTCTGCCCAAACCTTAAAA
 TTACCGACTTCAGCTTCAGTGACTTCGAGCTGTCTGATCTGGAACACAGCGCTGTGTACAATTCGGATGTT
 CACTGACCTCAACCTTGTGCAGAACTTCCAGATGAAACACGAGGTTCTTTGCCGATGGATTTTGAGTGTC
 AAGAAGAATTATCGGAAGAACGTTGCCTACCACAATTGGAGGCACGCCTTAAACACGGCACAGTGCATGT
 TTGCTGCTCTGAAAGCAGGCAAGATTGAGAACAAGTTGACGGATCTGGAGACGCTTGCAATTGCTGATTGC
 CGCTTTAAGCCATGATTTGGACCATCGTGGTGTGAACAACCTCATACATACAGCGGAGCGAGCACCCCTG
 GCCCAGCTGTAAGTCCACTCCACCATGGAGCACCATCACTTCGACCAGTCTTGTGTTCTAAACAGCC
 CAGGCAACCAGATCCTCAGTGGCCTCTCCATTGAAGAATAAAGACCACATTGAAAAATCAAGCAAGC
 AATTTTAGCCACTGACCTAGCACTGTACATTAAGAGACGAGGAGAATTTTTGAACTTATAAGAAAAAAT
 GAATTCAGTTTTGAAGATCCTCTTCAAAAGGAGTTGTTTCTGGCAATGCTGATGACTGCCTGTGATCTCT
 CCGCCATTACTAAGCCCTGGCCTATTCAACAACGGATAGCAGAAGTCTGTCGCTGATGAGGAGGAGAAAAA
 AGGAGACAGAGAGAGAAAAGAACTTAACATGGAGCCCGCTGATCTAATGAACAGGGAGAGAAAAAATAAA
 ATCCCAAGTATGCAAGTTGGGTTTATAGACGCCATCTGCTTGCAGCTGTATGAGGCCCTGACCCAGTCT
 CAGAAGACTGTTTGGCCCTGCTGGATGGCTGCAGGAAGAACAGGCAGAAATGGCAAGCCCTCGCAGACCA
 GCAGGAGAAGACGCTCCTAATGGGGAGAGCGCCAGGCCAAGCGGGAC

ACGCGTACGCGGCCGCTCGAGCAGAACTCATCTCAGAAGAGGATCTGGCAGCAATGATATCCTGGATT
 ACAAGGATGACGACGATAAGGTTTAA

Protein Sequence: >RR206532 representing NM_133584
Red=Cloning site Green=Tags(s)

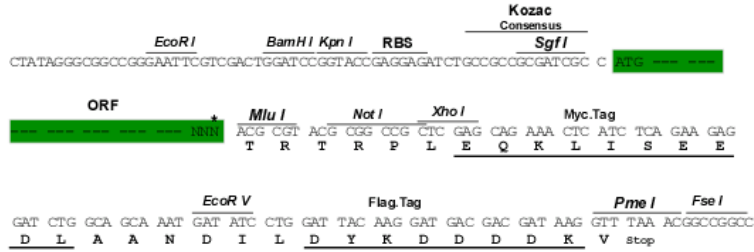
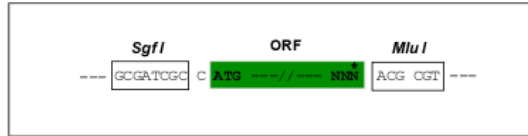
MLPFGDKTRDMVNAWFSERVHNIPVCKEGIRAHTESCSCSLPQSPHADNTTPGAPARKISASEFDRPLRP
IVVKDSEGTVSFLSDSGKKEQMPLTSPRFDSDEGDQCSRLLELVKDISSHLDVLTALCHKIFLHIHGLISA
DRYSLFLVCEDESSKDKFLVSRFLDVAEGSTLEEASNNCIRLEWNKGIVGHVAAFGEPLNIKDAYEDPRFN
AEVDQITGYKTQSILCMPKIKNHREEVVGVAQAINKKSGNGGTFTEKDEKDFAAAYLAFCGIVLHNAQLYET
SLLLENKRNVLLDLASLIFEQQSLEVILKKAATIISFMQVQKCTIFIVDEDCPDSFSRVFQMEWEEVG
KSSEPLTREHDANKINYMYAQYVKNTEPLNIPDVTKDNRFPTNENMGHINTHCIRSLCTPIKNGKKN
KVIQVQQLVNMEEKTGKIKAFNQDEQFLEAFVIFCGLGIQNTQMYEAVERAMAKQMVTLVLSYHASA
AEEETRELQALAAAVVPSAQTLEITDFSFDFELSDLETALCTIRMFTDLNLVQNFQMKHEVLCRWILSV
KKNYRKNVAYHNWRHAFNTAQCMFAALKAGKIQNKLTDLETALLIAALSHDLDRGVNNSYIQRSEHPL
AQLYCHSTMEHHHFDQCLMVLNSPGNQILSGLSIEEYKTLKI IKQAILATDLALYIKRRGEFFELIRKN
EFSFEDPLQKELFLAMLMTACDLSAITKPWPIQQRIAELVAAEFFDQGDREKELNMEPADLMNREKKNK
IPSMQVGFIDAICLQLYEALTHVSEDCLPLLDGCRKNRQKWQALADQKEKTLNNGESGQAKRD

TRTRPLEQKLI SEEDLAANDILDYKDDDDKV

Restriction Sites: Sgfl-MluI

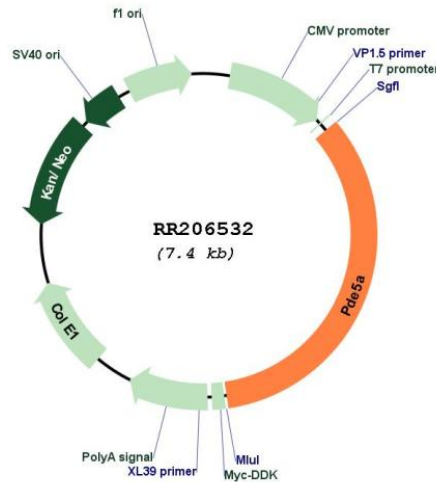
Cloning Scheme:

Cloning sites used for ORF Shuttling:



* The last codon before the Stop codon of the ORF

Plasmid Map:



ACCN: NM_133584

ORF Size: 2499 bp

OTI Disclaimer: The molecular sequence of this clone aligns with the gene accession number as a point of reference only. However, individual transcript sequences of the same gene can differ through naturally occurring variations (e.g. polymorphisms), each with its own valid existence. This clone is substantially in agreement with the reference, but a complete review of all prevailing variants is recommended prior to use. [More info](#)

OTI Annotation: This clone was engineered to express the complete ORF with an expression tag. Expression varies depending on the nature of the gene.

Components: The ORF clone is ion-exchange column purified and shipped in a 2D barcoded Matrix tube containing 10ug of transfection-ready, dried plasmid DNA (reconstitute with 100 ul of water).

Reconstitution Method:

1. Centrifuge at 5,000xg for 5min.
2. Carefully open the tube and add 100ul of sterile water to dissolve the DNA.
3. Close the tube and incubate for 10 minutes at room temperature.
4. Briefly vortex the tube and then do a quick spin (less than 5000xg) to concentrate the liquid at the bottom.
5. Store the suspended plasmid at -20°C. The DNA is stable for at least one year from date of shipping when stored at -20°C.

RefSeq: [NM_133584.1](#), [NP_598268.1](#)

RefSeq Size: 3397 bp

RefSeq ORF: 2502 bp

Locus ID: 171115

UniProt ID: [O54735](#)

Cytogenetics: 2q42

MW: 94.6 kDa

Gene Summary: catalyzes the hydrolysis of cGMP to 5'-GMP; may regulate vascular relaxation; may be involved in establishment of cerebellar neural networks [RGD, Feb 2006]