

Product datasheet for **RR206528**

Gjb2 (NM_001004099) Rat Tagged ORF Clone

Product data:

Product Type: Expression Plasmids
Product Name: Gjb2 (NM_001004099) Rat Tagged ORF Clone
Tag: Myc-DDK
Symbol: Gjb2
Synonyms: Cx26; CXN-26
Vector: pCMV6-Entry (PS100001)
E. coli Selection: Kanamycin (25 ug/mL)
Cell Selection: Neomycin
ORF Nucleotide Sequence: >RR206528 representing NM_001004099
Red=Cloning site Blue=ORF Green=Tags(s)

TTTTGTAATACGACTCACTATAGGGCGGCCGGAATTCGTCGACTGGATCCGGTACCGAGGAGATCTGCC
GCC**GCGATCGCC**

ATGGATTGGGGCACACTACAGAGCATCCTCGGGGTGTCAACAAGCACTCCACCAGCATTGGGAAAATCT
GGCTCACTGTCTTTCATCTTCCGCATCATGATCCTCGTGGTGGCCGCGAAGGAGGTGTGGGGAGATGA
GCAAGCCGATTTTGTGGCAACTCTCCAGCCTGGCTGTAAGAATGTGTGCTACGACCACTACTCCCC
ATCTCTCACATCCGGCTCTGGGCTCTGCAGCTGATCATGGTGTCCACGCCGCCCTCTGGTAGCTATGC
ACGTGGCCTACCGGAGACACGAAAAGAAACGGAAGTTCATGAAGGGAGAGATAAAGAACGAGTTTAAAGGA
CATCGAAGAGATCAAACCCAGAAGGTCGATCGAAGGGTCCCTGTGGTGGACCTACACCACCAGCATC
TTCTTCCGGGTCACTTCGAAGCTGTCTTCATGTATGTCTTTACATCATGTACAATGGCTTCTTCATGC
AGCGTCTGGTGAAGTGTAAACGCTGGCCTGTCCCAATACAGTGGACTGCTTCATTTCCAGGCCACAGA
AAAGACTGTCTTACGGTGTTCATGATCTCTGTGTCTGGAATTTGCATCCTGCTAACATCACAGAGCTG
TGCTATCTGTTTATTAGGTATTGCTCAGGGAAGTCCAAAAGACCAGTC

ACGCGTACGCGGCCGCTCGAGCAGAAACTCATCTCAGAAGAGGATCTGGCAGCAAATGATATCCTGGATT
ACAAGGATGACGACGATAAGGTTTAA



[View online »](#)

Protein Sequence: >RR206528 representing NM_001004099
 Red=Cloning site Green=Tags(s)

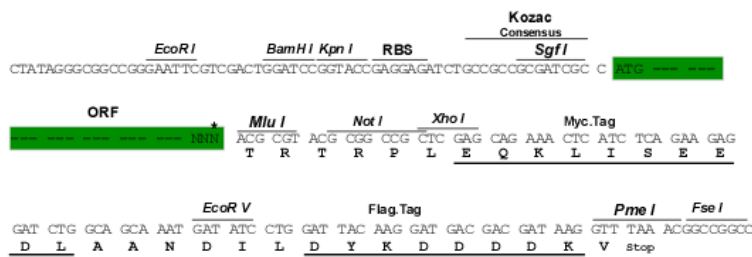
MDWGLTQSI LGGV NKHSTSIGKIWLTVLFI FRIMILVVA AKEVWGDEQADFV CNTLQPGCKNVCYDHYFP
 ISHIRLWALQLIMVSTPALLVAMHVAYRRHEKKRKFMKGEIKNEFKDIEEIKTQKVRIEGLSWWYTTTSI
 FFRVIFEAVFMYVFYIMYNGFFMQRLVKCNAWPCPNTVDVCFISRPTEKTVFTVFMISVSGICILLNITEL
 CYLFIRYCSGKSKRPV

TRTRPLEQKLISEEDLAANDILDYKDDDDKV

Restriction Sites: SgfI-MluI

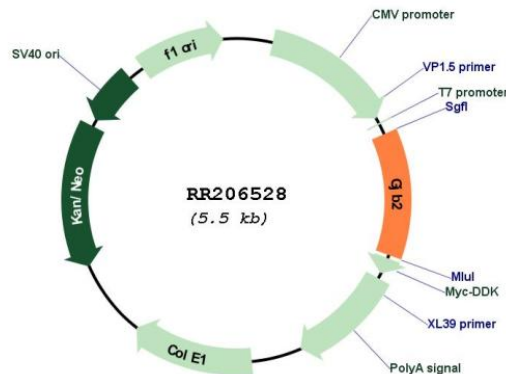
Cloning Scheme:

Cloning sites used for ORF Shuttling:



* The last codon before the Stop codon of the ORF

Plasmid Map:



ACCN: NM_001004099

ORF Size: 678 bp

OTI Disclaimer:	The molecular sequence of this clone aligns with the gene accession number as a point of reference only. However, individual transcript sequences of the same gene can differ through naturally occurring variations (e.g. polymorphisms), each with its own valid existence. This clone is substantially in agreement with the reference, but a complete review of all prevailing variants is recommended prior to use. More info
OTI Annotation:	This clone was engineered to express the complete ORF with an expression tag. Expression varies depending on the nature of the gene.
Components:	The ORF clone is ion-exchange column purified and shipped in a 2D barcoded Matrix tube containing 10ug of transfection-ready, dried plasmid DNA (reconstitute with 100 ul of water).
Reconstitution Method:	<ol style="list-style-type: none">1. Centrifuge at 5,000xg for 5min.2. Carefully open the tube and add 100ul of sterile water to dissolve the DNA.3. Close the tube and incubate for 10 minutes at room temperature.4. Briefly vortex the tube and then do a quick spin (less than 5000xg) to concentrate the liquid at the bottom.5. Store the suspended plasmid at -20°C. The DNA is stable for at least one year from date of shipping when stored at -20°C.
RefSeq:	NM_001004099.2
RefSeq Size:	2445 bp
RefSeq ORF:	681 bp
Locus ID:	394266
UniProt ID:	P21994
Cytogenetics:	15p12
MW:	26.5 kDa
Gene Summary:	forms gap junctions; may play a role in epididymal development [RGD, Feb 2006]