

Product datasheet for **RR206480**

Trpc6 (NM_053559) Rat Tagged ORF Clone

Product data:

Product Type:	Expression Plasmids
Product Name:	Trpc6 (NM_053559) Rat Tagged ORF Clone
Tag:	Myc-DDK
Symbol:	Trpc6
Synonyms:	Trrp6
Mammalian Cell Selection:	Neomycin
Vector:	pCMV6-Entry (PS100001)
E. coli Selection:	Kanamycin (25 ug/mL)



[View online »](#)

ORF Nucleotide
Sequence:

>RR206480 representing NM_053559
 Red=Cloning site Blue=ORF Green=Tags(s)

TTTTGTAATACGACTCACTATAGGGCGGCCGGGAATTCGTGACTGGATCCGGTACCGAGGAGATCTGCC
 GCC**CGGATCGCC**

ATGAGCCAGAGCCCGGGTTCGTGACCCGAGGGTGGCTCTCGAAGGCTGCCCTGGAGCCGGCGCC
 GGCACAACGAGAGCCAGGACTATCTGCTGATGGACGAGCTGGGAGACGACGGCTACCCACAGCTCCAGCA
 GCCACCTTATGGCTACTATCCCAGCTTCCGGGGTAATGAAAACAGACTGACTCACCGCGGCAGACAGTT
 CTTCTGAGAGAAGGAAGAAGTTGGCTAATCGAGGACCAGCATACATGTTAATGATCACTCAACCAGCC
 TGTCTATTGAGGAGAACGCTTTCTGGATGCAGCTGAATATGGCAACATCCCAGTGGTGCAGGAGATGCT
 AGAAGAATGTCTCCCTCAATGTTAACTGTGTGGATTACATGGGCCAGAATGCCCTACAGTTGGCGGTG
 GCCAATGAGCACCTGAAATTACAGAGCTGTTACTCAAGAAGGAAAACCTGTCTCGAGTTGGGGATGCTT
 TACTTTTAGCTATCAGTAAAGGTTATGTACGGATTGTGGAGGCTATTCTCAACCATCCAGCTTTTGTCTGA
 AGGCAAGAGGTTGGCGACAAGCCCCAGCCAGTCTGAACCTCAGCAAGATGACTTTTATGCCTATGATGAA
 GATGGGACAAGATTCTCCACAGATGTGACCCCAATCATTCTGGCTGCTCATTGCCAGGAATATGAAATTG
 TGCATACCCTCCTGAGAAAGGGTGCCCGGATCGAACGGCCTCATGATTATTTCTGCAAGTGTACAGAATG
 CAGCCAGAAAACAAAAGCATGACTCCTTCAGCCACTCTAGATCCAGGATCAATGCCTACAAAGGGCTGGCA
 AGTCCAGCATACCTGTCCTGTCAGTGAAGATCCAGTGCATGACAGCTTTAGAACCTCAGCAATGAGCTGG
 CAGTGTCTGCCAACATTGAGAAAAGATTCAAGAATGACTACAGGAAGCTGTCCATGCAGTGAAGGATTT
 TGTTGTGGGTCTCCTGGACCTCTGCAGAAAACCGGAGGAAGTGAAGCCATCCTGAACGGGGATGCAGAG
 ACTCGCCAGCCCGGGGACCTCGCTCGTCCGAATCTCAGCCGTTTAAAACCTCGCTATTAATATGAAGTAA
 AAAAATTCGTGGCGCATCCGAACCTGCCAGCAGCAGCTCCTCCATATGGTATGAGAACCCTCTCTGGTTT
 ACGGCAGCAGACCATGGCAGTGAATTCCTCGTGGTCTCGCTGTCGCCATTGGACTGCCCTTCTGGCT
 CTCATATACTGGTGTGCTCCTTGCAAGATGGGGAAGATATTACGAGGTCCATTCATGAAGTTCGTAG
 CACATGCGGCCTCCTCACCATTTTCTGGGGTCTCGTCATGAATGCAGCTGACAGATTTGAAGGCAC
 CAAGCTCCTCCCTAATGAAACCAGCACAGATAATGCAAGGCAGCTGTTCCAGGATGAAAACATCCTGTTTC
 TCATGGATGGAGATGCTCATTATCCTGGTAATAGGAATGATATGGGCTGAATGTAAGAAAATCTGGA
 CTC AAGGCCCAAAGAATATTTATTTGAGTTGTGGAATATGCTTGACTTTGGAATGTTAGCAATCTTTGC
 AGCATCATTATTGCAAGATTTATGGCATTCTGGCATGCATCAAAGCTCAGAGCATCATCGATGCAAAAT
 GACACTTTAAAGGACTTGACAAAAGTCACTGGGGACAACGTCAAATACTACAATCTGGCCAGGATAA
 AGTGGGACCTACCGATCCTCAGATCATCTCTGAAGTCTTTATGCAATCGCGGTGGTTTTAAGTTTCTC
 CAGAATAGCTTACATTTTACCGGCAAATGAAAGCTTTGGACCTCTGCAGATTTCACTTGGGAAGAACAGT
 AAAGATATCTTCAAATTCATGGTCATATTCATCATGGTGTGTTGTAGCCTTTATGATTGGAATGTTCAACC
 TCTACTCCTACTACATTTGGTGCAAAAACAGAATGAAGCCTTCACAACAGTTGAGGAAAAGTTTTAAGACTCT
 GTTCTGGGCTATATTTGGTCTTTCTGAAGTGAAGTCGGTGGTCACTCAACTACAATCACAAGTTCATTGAG
 AACATAGGCTATGTTCTGTATGGAGTCTAATGTCACAATGGTCATTGTTTTGCTAAAATATGTTAATTG
 CGATGATCAACAGTTCATTCCAGGAAATGAGGATGATGCGGATGTGGAGTGAAGTTTGAAGGGCCAA
 ATTTGGTTTTTCTACTTTGAAGAGGGAAGAACAACACTGCCTGTCCCCTTCAATCTTGTGCCAAGTCCAAAG
 TCCTGCTTTATCTCCTATTGAAATTTAAGAAATGGATGTCTGAGCTTATCCAGGTCATAAGAAAAGGCT
 TCCAAGAAGATGCAGAGATGAACAAGAGAAATGAAGAAAAGAAATTTGGAATTTTGGGAAGTCATGAAGA
 CCTTTCAAATTTTCACTTGACAGAAATCAGCTGGCACACAACAACAATCAAGTACAAGGAGCTCAGAA
 GATTTCCATTTAAATAGCTTCAGTAATCCTCCAAGACAGTATCAGAAAATCATGAAAAGACTCATTAAAA
 GATACGTAAGTGCAGGCCAGATTGATAAGGAGAGTGAAGTGAACGAAGGGGAGCTGAAGGAAATTA
 GCAGGACATCTCAAGTCTCCGTTATGAACTCCTTGAGGAAAAATCACAGAACACAGAGGACCTAGCAGAA
 CTCATTAGAAAAGCTTGGGAGAGACTGTCTTTAGAGTCGAAACAAGAGGAAAAGCCGCAGACTCATTAGAA
 AGCTTGGGAGAGACTGTCTTTAGAGTCGAAACAAGAGGAAAAGCCGCAGA

ACGCGTACGCGGCCGCTCGAGCAGAAAACCTCATCTCAGAAGAGGATCTGGCAGCAAATGATATCCTGGATT
 ACAAGGATGACGACGATAAGGTTTAA

Protein Sequence: >RR206480 representing NM_053559
 Red=Cloning site Green=Tags(s)

MSQSPGFVTRGGSPKAAPGAGARRNESQDYLLMDELGDDGYPQLQPPYGYPSFRGNEENRTHRRQTV
 LREKGRRLANRGPAYMFNDHSTLSIEEERFLDAAEYGNIPVVRKMLEECLSLNVNVCVDYMGONALQLAV
 ANEHLEITELLKKNL SRVGDALLLAISKGYRIVEAILNHPAFAEGKRLATSPSQSELQDDFYAYDE
 DGTRFSDVTPILAAHCQEYEIVHTLLRKGARIERPHDYFCCKTECSQKQKHSF SHSRSRINAYKGLA
 SPAYLSLSEDPVMTALELSNELAVLANIEKEFKNDYRKL SMQCKDFVVGLLDL CRNTEEVEAILNGDAE
 TRQPGDLARPNLSRLKLAIKYEVKFVAHPNCQQQLLSIWYENLSGLRQQTMAVKFLVVLAVAIGLPFLA
 LIYWCAPCSKMGKILRGPFMKFVAHAASFTIFLGLLVMNAADRFEFGTKLLPNETSTDNARQLFRMKTSCF
 SWMEMLIISWVIGMIWAECKEITWQGPKEYLFELWNMLDFGMLAIFAASF IARFMAFWHASKAQSIIDAN
 DTLKDLTKVTLGDNV KYYNLARIKWDPTDPQII SEGLYAI AVVLSFSRIAYILPANESFGPLQISLGRTV
 KDIFKFMVIFIMVFVAFMIGMFNLYSYYIGAKQNEAFTTVEESFKTLFWAIFGLSEVKSVINYNHFKFIE
 NIGYVLYGVYVNTMVIVLLNMLIAMINSSFQEIEDDADVEWKFARAKLWFSYFEEGRTPVPFNLVPSPK
 SLLYLLLKFKKWMSELIQGHKKGFQEDAEMNKRNEEKKFGILGSHEDLSKFSLDRNQLAHNKQSSTRSSE
 DFHLNSFNPPRQYQKIMKRLIKRYVLQAQIDKESDEVNEGELKEIKQDISSLRYELLEEKSQNTEDLAE
 LIRKLGRLSLESKQESRRLIRKLGRLSLESKQESRR

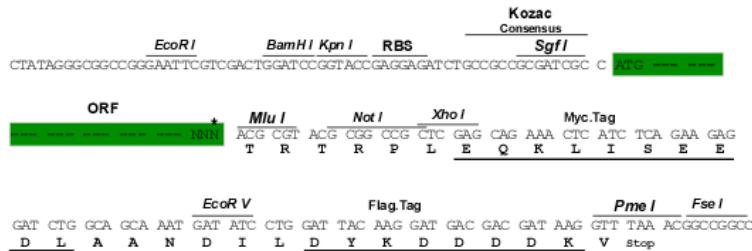
TRTRPLEQKLISEEDLAANDILDYKDDDDKV

Chromatograms: https://cdn.origene.com/chromatograms/ja1467_a01.zip

Restriction Sites: SgfI-MluI

Cloning Scheme:

Cloning sites used for ORF Shuttling:

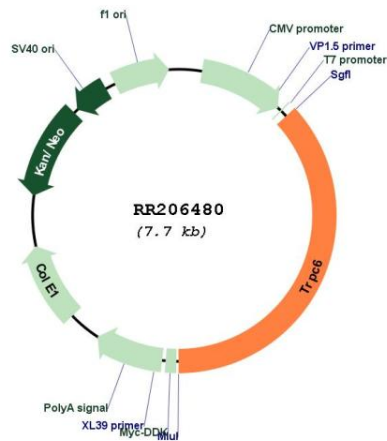


ACCN: NM_053559

ORF Size: 2790 bp

- OTI Disclaimer:** The molecular sequence of this clone aligns with the gene accession number as a point of reference only. However, individual transcript sequences of the same gene can differ through naturally occurring variations (e.g. polymorphisms), each with its own valid existence. This clone is substantially in agreement with the reference, but a complete review of all prevailing variants is recommended prior to use. [More info](#)
- OTI Annotation:** This clone was engineered to express the complete ORF with an expression tag. Expression varies depending on the nature of the gene.
- Components:** The ORF clone is ion-exchange column purified and shipped in a 2D barcoded Matrix tube containing 10ug of transfection-ready, dried plasmid DNA (reconstitute with 100 ul of water).
- Reconstitution Method:**
1. Centrifuge at 5,000xg for 5min.
 2. Carefully open the tube and add 100ul of sterile water to dissolve the DNA.
 3. Close the tube and incubate for 10 minutes at room temperature.
 4. Briefly vortex the tube and then do a quick spin (less than 5000xg) to concentrate the liquid at the bottom.
 5. Store the suspended plasmid at -20°C. The DNA is stable for at least one year from date of shipping when stored at -20°C.
- RefSeq Size:** 2793 bp
- RefSeq ORF:** 2793 bp
- Locus ID:** 89823
- Cytogenetics:** 8q11
- MW:** 106.6 kDa
- Gene Summary:** a G-protein-coupled receptor regulated Ca(2+) channel [RGD, Feb 2006]

Product images:



Circular map for RR206480