

Product datasheet for **RR206461**

Sccpdh (NM_001013985) Rat Tagged ORF Clone

Product data:

Product Type:	Expression Plasmids
Product Name:	Sccpdh (NM_001013985) Rat Tagged ORF Clone
Tag:	Myc-DDK
Symbol:	Sccpdh
Synonyms:	RGD1311440
Vector:	pCMV6-Entry (PS100001)
E. coli Selection:	Kanamycin (25 ug/mL)
Cell Selection:	Neomycin
ORF Nucleotide Sequence:	>RR206461 representing NM_001013985 Red=Cloning site Blue=ORF Green=Tags(s)

TTTTGTAATACGACTCACTATAGGGCGCCGGGAATTCGTCGACTGGATCCGGTACCGAGGAGATCTGCC
GCC**CGGATCGCC**

ATGGCGACGGAGCAGAGGCCCTTCCAGCTGGTGGTGTTCGGCGCCTCTGGCTTACCAGGCCAGTTCTGTA
CGGAGGAGGTGGCCGGGAGCAGATGGCCTCGGAGCAGAGCTCCCGCCTGCCCTGGGCCGTGGCGGGCCG
CTCCAAGGAGAAGCTGCAGCAAGTGTGGAGAAGGCTGCCAGAAGCTGGGAAGGCAACACTATCATCT
GAAGTTGGAATAATAATCTGTGATATCAGTAATCCAGCCTCACTTGATGAAATGGCTAAAAAGGCAACAC
TTGTCCTCAACTGCGTAGGACCTTATCGATTTTATGGAGAACCTGTAGTAAAAGCATGATTGAAAATGG
AACAAAGTTGCAATTGACATCTGTGGGGAACCTCAGTTTCTGGAACCTAATGCATGTAAGTATCATGAGAAA
GCTGCAGAGAAGGGGTTTATATCATTGGAAGCAGTGGCTTTGACTCCATCCCAGCAGATCTAGGAGTGC
TATACACCCGAAACCAGATGAACGGCACTTAACTGCTGTAGAAAAGCTTTCTGACTATAAATTCGGGACC
TGAGGGGTTGTGATTCATGACGGAACCTGGAAGTCAGCAATTTATGGTTTTGGCGATAAGGGCAGTTTA
AGGAACTGCGGAGTGTATCAAATCTGAAACCTGTCCAGTTATTGGCTCGAAGTTGAAAAGAAGGTGGC
CAGTTAGCTATTGCAGAGAGCTGAACTCGTATGCCATTCCTTTTTGGGATCTGATGTCGGTTGTGAA
AAGGACTCAGCGTACTTGCATGAAAATTTAGAGGACTACCAGTTCAAGTATGCCGTTACATAACGGTG
GGAGGCATCACCTCTGTGATTAAGCTGATGTTTGCAGGACTTTTCTTTTTATTCTTTGTGAAGTTTAGCA
TTGGAAGACAACCTCTTGTAAAGTTCCCATGGCTCTTTTCTTTGGTTATTTTTCAAACGAGGTCCAAC
ACAAAAACAGATGGATGAGTCAATCACAATGACATTCTTTGGTCAAGGATACAGCCATGGCGTTAGT
GCTGAAAAGAACAACCAATATCAGAATCTGTAAGTCAAGTGAAGGACCAGAGGCTGGCTACGTGGCTA
CTCCCATAGCCATGGTTCAGGCTGCCGTGACTTCTCCTGAATGATGCCTCTGACCTTCCAAAAGGGGGCGG
TGTCTTCACTCCTGGAGCAGCCTTCTCCAGAACCAAGTTGATCGACAGACTCAACCAGCACGGCATTCAA
TTCAGTGCATTAGCAGCTCTGAAGTG

ACGCGTACGCGGCCGCTCGAGCAGAAACTCATCTCAGAAGAGGATCTGGCAGCAAATGATATCCTGGATT
ACAAGGATGACGACGATAAGGTTTAA



[View online »](#)

Protein Sequence: >RR206461 representing NM_001013985
 Red=Cloning site Green=Tags(s)

MATEQRPFQLVVFAGSGFTGQFVTEEVAREQMASEQSSRLPWAVAGRSKEKLQQVLEKAAQKLGRATLSS
 EVGIIICDISNPASLDEMAKKATLVNLCVGPYRFYGEPPVKACIENGTSCIDICGEPQFLELMHVYHEK
 AAKEGVYIIGSSGFDSIPADLGLVYTRNQMGTLTAVESFLTINSGPEGLCIHDGTWKSAYIGFGDKGSL
 RKLRSVSNLKPVPVIGSKLRRRWPVSYCRELNSYAIPLGSDMSVVKRTQRYLHENLEDSPVQYAAIYITV
 GGITSVIKLMFAGLFFLFFVKFSIGRQLLVKFPWLF SFGYF SKRGPTQKQMDSESSFMTFFGQGYSHGVS
 AEKNKPNIRICTQVKGPEAGYVATPIAMVQAAVTF LNDASDL PKGGGVF TPGAASFRTKLIDRLNQHGIQ
 FSVISSSEV

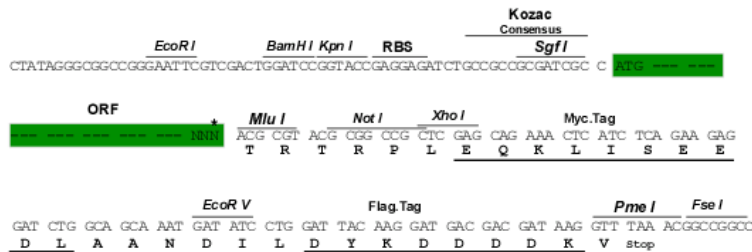
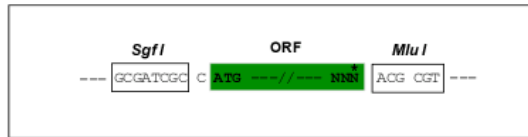
TRTRP**LEQKLISEEDLA**NDILDYKDDDDKV

Restriction Sites:

SgfI-MluI

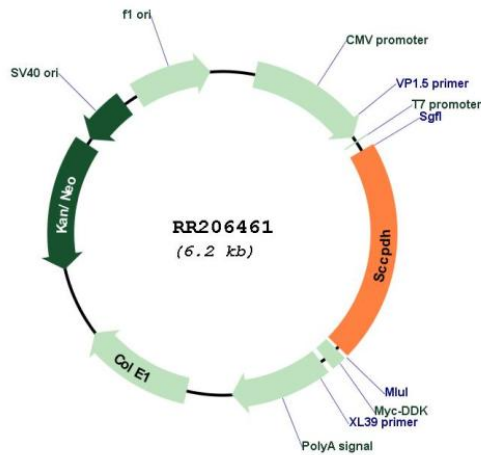
Cloning Scheme:

Cloning sites used for ORF Shuttling:



* The last codon before the Stop codon of the ORF

Plasmid Map:



ACCN: NM_001013985

ORF Size:	1287 bp
OTI Disclaimer:	The molecular sequence of this clone aligns with the gene accession number as a point of reference only. However, individual transcript sequences of the same gene can differ through naturally occurring variations (e.g. polymorphisms), each with its own valid existence. This clone is substantially in agreement with the reference, but a complete review of all prevailing variants is recommended prior to use. More info
OTI Annotation:	This clone was engineered to express the complete ORF with an expression tag. Expression varies depending on the nature of the gene.
Components:	The ORF clone is ion-exchange column purified and shipped in a 2D barcoded Matrix tube containing 10ug of transfection-ready, dried plasmid DNA (reconstitute with 100 ul of water).
Reconstitution Method:	<ol style="list-style-type: none">1. Centrifuge at 5,000xg for 5min.2. Carefully open the tube and add 100ul of sterile water to dissolve the DNA.3. Close the tube and incubate for 10 minutes at room temperature.4. Briefly vortex the tube and then do a quick spin (less than 5000xg) to concentrate the liquid at the bottom.5. Store the suspended plasmid at -20°C. The DNA is stable for at least one year from date of shipping when stored at -20°C.
RefSeq:	NM_001013985.1 , NP_001014007.1
RefSeq Size:	1587 bp
RefSeq ORF:	1290 bp
Locus ID:	305021
UniProt ID:	Q6AY30
Cytogenetics:	13q26
MW:	47.1 kDa