

## Product datasheet for **RR206459**

### Lca5 (NM\_001013954) Rat Tagged ORF Clone

#### Product data:

|                           |  |
|---------------------------|--|
| Product Type:             | Expression Plasmids                      |
| Product Name:             | Lca5 (NM_001013954) Rat Tagged ORF Clone |
| Tag:                      | Myc-DDK                                  |
| Symbol:                   | Lca5                                     |
| Synonyms:                 | RGD1308555                               |
| Mammalian Cell Selection: | Neomycin                                 |
| Vector:                   | pCMV6-Entry (PS100001)                   |
| E. coli Selection:        | Kanamycin (25 ug/mL)                     |



[View online »](#)

ORF Nucleotide  
Sequence:

>RR206459 representing NM\_001013954  
 Red=Cloning site Blue=ORF Green=Tags(s)

TTTTGTAATACGACTCACTATAGGGCGGCCGGGAATTCGTCGACTGGATCCGGTACCGAGGAGATCTGCC  
 GCC**CGGATCGCC**

ATGGGGGAAAGGGACCAAAGTTCAGATACTGATCAAGAAAGAAAAGGAGGCAAACACCCCTTACTCGTCCC  
 ATTACTCGTCTGACTTCGGGTCCTCACCACAGTCTTCTGGCCCTCGTCACCTGTCAACACGCCACCATG  
 TGCCAGTAATAGGGAGAAGAATCCCAAAAGACACCTGTACAGACCACACGTGCGCCACCAAAACCGTTAGG  
 AAAGTGAGTCTAAGGCTATACCCAACAAAAGGGGGTCCGAGTGGGATTTTCGGTCCCAAAGCCTCAACA  
 GAGAGCCACTTCGAAAGATCCAGATATCGTAACAAAGAGGGTCTTTCTGCAAGACTTCTGAAAATCAC  
 CGAGCTGCAGAATGAAGTGTCTGAACACAGGTCAAGTTAGCCAGCTGCTCAAAGAAAACAAGGCTTTG  
 AAAAGTCTGCAGTATCGTCAGGAGAAAGCACTGAGTAAGTTCAAGATGCAGAGAATGAAATCTCACAAC  
 TTATACACCGCCATAACGGTGAGATTACTGCGCTCAAAGAACGCTTAAGAAAATCTCAGGAGAAAGAGCG  
 GATGGCAGAGAAAAGAGTAAAGACACAGAAGGGGAACTATTTAGGACGAAATTTCCCTACAGAAACTA  
 AAAAAGATCTCTGAGGCCAGACCTACCGGAGCGAGACGATTTGGCCAAGAAAAGTGTTCAGCAGAGT  
 TAAAATTAGACAACCCGAGAGAAAAGTAAAGGAATATCGAAGAACCTGGAGCTAAGCACCACACAGCTT  
 CCAGCGGCAGCTGCTTGCTGAAAGGAAAAGAGCGTTTGAGGCTCACGATGAAAATAAAATTTCCAAAAG  
 GAGCTGCAGCGGCTCCACCACAAGCTGAAGGAGAAGGAGAAGAAATTGGATATAAAAAACATCTACGCTA  
 ATCGCCTGCCAAGTCTCTCCAAAGAAAAGAGAAAAGAAATGCAAGAAAGCATGCATCCTGCCAGAGCGA  
 CTTTACGGACCTGTGTACAAAAGCAGTACAGACCGCTGAAGACTTTGAGCCGGAAGAGTTTCTTTTACA  
 GCACAGACAGTCTTTGTTATGAAAACAGATGGGACGGGTGAGAATATCTTCTCGTACCTGGAATACC  
 AGGATCGAAATGAGCATGGGTGAGAGAGTCTAAGCTCAACTTTGGAACAAGAAGGAAAGTACAGCGACGA  
 CCAGGATTCATGTACTGCAAAAGCAGGAGACCGGGAAGTCTGAATGTGAATGGGAAAAGAGAAGAGCTT  
 AAGGTGAAAGGCAAGTCTCTTTGCTAGGGAGAACAGAGAAGCTGGTGTAGAAGCTGGAAGTGTCCAAA  
 CGGAAAGTTATCAAGCTCAAACGATTGATAAATCCAAGACGAGGCGGAAAGACTAAAGACAGAAATGCT  
 TCTTGCCAAACTGAACGAAATCAACAAAGAACTCCAAGATCCCCAGAGCCTCAGCCGACCCCTTTTGCCG  
 TTGCTACCCAACCTCGAATCCAAGCTGTACTCTCCAGACAGAAGCCTCAGACCTTACACGTTCTCGGAGT  
 CCTTAGACAGATCATTTAATGGACAACATTTGTCAGACATGAGTTTTTTAACTCCAGGGACGAAGGCCA  
 GAGTCCAGGACTGATCAGAAGTCCAGCTCCTTCAGATGAGTTCTCATTCCGGTAGCTACGTGCCTTCGTTT  
 GGAAAAACACCAGGAAAGTCAAATCCACCTAGCCAAAAAATAGCCTTTTAGATTTCCAAAGCAACATGT  
 CTGAGGGCCTGAGTAAAGACAGTCTAGATTTTCAATTTCAAGGAAAAGAGAAAAGGCAACCCTGATGGAGCA  
 GCTGTTCCGGCACCAGCGCCAGCGCCAGCGCCACCAACACCAGCGCCAGCACACCACCAACACCACCACC  
 AACACCAACACCAACACCAACACCAACACCAACACCAACTGCAATGTCCCCTCCAAGAGCATTGACTCAC  
 ATTTCCCTGTGCCAGCAGAGGTGACTTGGACCCTCTTCAATTTCTCCTCCGGGGACAGAAGCAGCAGAGT  
 CCGGGAGCCTGATGGTGAAGATGAAGACCTTTTCTCAGCGAAGGAAGTATTTAATCCAAATAGACAC  
 CGGTTGAAGCACACGAGCACTAAGCCAACAGTACGGCCGTTGACTCTATTGACGAGGACATTGAAGAGG  
 TTACCCTCAGA

**ACGCGT**ACGCGGCCGCTCGAGCAGAAACTCATCTCAGAAGAGGATCTGGCAGCAAATGATATCCTGGATT  
 ACAAGGATGACGACGATAAGGTTTAA

**Protein Sequence:** >RR206459 representing NM\_001013954  
 Red=Cloning site Green=Tags(s)

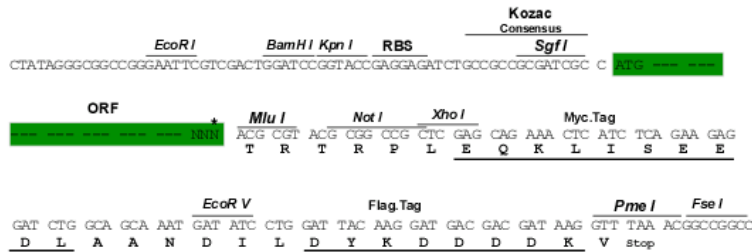
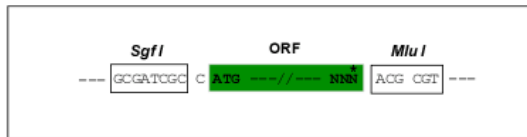
MGERDQSSD TDQERKGGKHPYSSHYSSDFGSSPQSSGSPSPVNTPPCASNREKNPKRHLSDHVRHQTVR  
 KVSPKAI PNKKGVRVGFRSQSLNREPLRKDPDIVTKRVL SARLLKITELQNEVSELQVKLAQLLKENKAL  
 KSLQYRQEKALSKFEDAENEISQLIHRHNGEITALKERLRKSQEKERMAEKRVK DTEGELFRTKFSLQKL  
 KKISEARHLPERDDLAKKLVSAELKLDNTERKIKELSKNLELSTNSFQRQLLAERKRAFEAHDENKILQK  
 ELQRLHHKLEKEKELDIKNIYANRLPKSSPKKEKEIARKHASCQSDFTDLCTKAVQTAEDFEPEFPFT  
 AQTVLCYENRWDGSEYLP SYLEYQERNEHGSELSSTLEQEGKYSDDQDSCTAKQETGKSECEWEREELD  
 KYVGKSSLLGRTEKLVLEAGSVQTESYQAQTIDKFQDEAERLKTEMLLAKLNEINKELQDPQSLSRPLLP  
 LLPNFESKLYSPDRSLRPYTFSESLDRSFGQHLSDMSFLTPRDEGQSPGLIRSPAPSDEF SFGSYVPSF  
 GKTPGKSNPPSQKNSLLDFQSNMSEGLSKDSLDFISRKEKKATLMEQLFGTSASASATNTSASTTTNTTT  
 NTNTNTNTNTNTNCNVP SKSIDSHFPAASRGDLPLHFLSGDRSSRVREPDGEDEDLFLSEGRSFNPNRH  
 RLKHTSTKPTVTAVDSIDEDIEEVTLR

TRTRPLEQKLI SEEDLAANDILDYKDDDDKV

**Restriction Sites:** SgfI-MluI

**Cloning Scheme:**

Cloning sites used for ORF Shuttling:



\* The last codon before the Stop codon of the ORF

**ACCN:** NM\_001013954

**ORF Size:** 2181 bp

**OTI Disclaimer:** The molecular sequence of this clone aligns with the gene accession number as a point of reference only. However, individual transcript sequences of the same gene can differ through naturally occurring variations (e.g. polymorphisms), each with its own valid existence. This clone is substantially in agreement with the reference, but a complete review of all prevailing variants is recommended prior to use. [More info](#)

**OTI Annotation:** This clone was engineered to express the complete ORF with an expression tag. Expression varies depending on the nature of the gene.

**Components:** The ORF clone is ion-exchange column purified and shipped in a 2D barcoded Matrix tube containing 10ug of transfection-ready, dried plasmid DNA (reconstitute with 100 ul of water).

**Reconstitution Method:**

1. Centrifuge at 5,000xg for 5min.
2. Carefully open the tube and add 100ul of sterile water to dissolve the DNA.
3. Close the tube and incubate for 10 minutes at room temperature.
4. Briefly vortex the tube and then do a quick spin (less than 5000xg) to concentrate the liquid at the bottom.
5. Store the suspended plasmid at -20°C. The DNA is stable for at least one year from date of shipping when stored at -20°C.

**RefSeq:** [NM\\_001013954.1](#), [NP\\_001013976.1](#)

**RefSeq Size:** 3152 bp

**RefSeq ORF:** 2184 bp

**Locus ID:** 300866

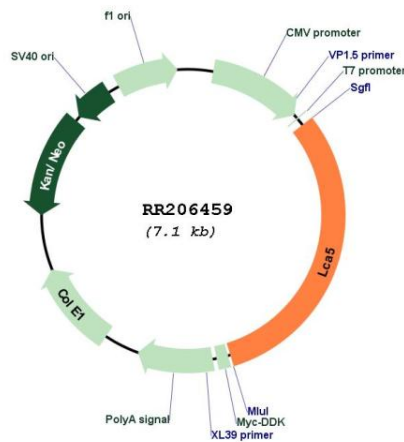
**UniProt ID:** [Q5U2Y9](#)

**Cytogenetics:** 8q31

**MW:** 82.6 kDa

**Gene Summary:** Involved in intraflagellar protein (IFT) transport in photoreceptor cilia.[UniProtKB/Swiss-Prot Function]

**Product images:**



Circular map for RR206459