

Product datasheet for **RR206446**

Ip6k2 (NM_021660) Rat Tagged ORF Clone

Product data:

Product Type:	Expression Plasmids
Product Name:	Ip6k2 (NM_021660) Rat Tagged ORF Clone
Tag:	Myc-DDK
Symbol:	Ip6k2
Synonyms:	lhpk2; Pius
Mammalian Cell Selection:	Neomycin
Vector:	pCMV6-Entry (PS100001)
E. coli Selection:	Kanamycin (25 ug/mL)



[View online »](#)

ORF Nucleotide Sequence:

>RR206446 representing NM_021660
 Red=Cloning site Blue=ORF Green=Tags(s)

TTTTGTAATACGACTCACTATAGGGCGGCCGGAATTCGTCGACTGGATCCGGTACCGAGGAGATCTGCC
 GCC**GCGATCGCC**

ATGAGCCAGCCTTCAGGACCATGGACGTAGAGCCCCGTACCAAGGCATCCTGCTGGAGCCCTTTGTCC
 ACCAGTTGGGGGCACTCATGCGTTTCCGGTTCAATGAGACAACCCTGTGCAAGCCCCTGGTTCCGAG
 GGAGCATCAGTTCTACGAGACCCCTCCAGCTGAGATGCGCAGATTCACTCCCCAGTACAAAGGTGTGGTA
 TCAGTACGCTTTGAAGAAGATGAAGACAGGAACCTGTGTTAATAGCATATCCATTAAAGGGGGACCATG
 GACCTGTGGATATTGTAGACAATTCAGACTGTGAACAAAAAGTAAGCTGCTGAGATGGACAAAAA
 ACATCACGTCCTAGAAACAGAAAAGAGTCCAAGGACTGGGTGCGCCAGCACCGAAAAGAGGAGAAGATG
 AAGAGCCATAAGTTAGAAGAAGAATTTGAGTGGCTAAAGAAGTCTGAAGTCTTATACTACAGTGTAGAAA
 AAAAGGGAAGTGAAGCTCCAGCTCAAACACTACAACCCTTGGAGCATGAAGTGTATCAGCAGCAGCT
 ACAGAGGATGAAGGAGACGCGAAGCACCGGAACCAAGTACAAATTCATCTTGCTGGAGAACCTGACTTGC
 CGCTATGAGGTGCTTGTGCTCCTGGACCTCAAGATGGGCACACGCCAGCATGGCGACGATGCTTCAGAGG
 AAAAAGCAGCTAACCCAGATCCGAAAATGTCAGCAGAGCACATCTGCAGTCATTGGCGTTCGAGTGTGTGG
 CATGCAGGTGTACCAGGCAGGCACTGGGCAGCTCATGTTTCATGAACAAGTACCATGGACGGAAGCTTTCA
 GTGCAGGGCTTCAAGGAGGCGCTTTTCCAGTCTTTTACAATGGGCGGTACCTGCGCCGTGAGCTCCTGG
 GCCCTGTGCTCAAGAAGCTAACTGAGCTTAAGGCCGTGTTGGAGCGACAGGAATCCTACCCTTCTATTC
 AAGTTCCTACTGGTCATTTATGATGGCAAGGAATGGCCAGAGGTGACCTGGACTCAGATGCTGAGGAC
 TTGGAGGACCTCTCAGAAGAGTCGGCTGATGAGTCTGCTGGTGCCTATGCCTACAAGCCTCTCGGTGCCA
 GCTCAGTGGACGTGCGCATGATCGACTTTGCACACACCACCTGCAGGCTCTATGGCGAGGACAGTGTGGT
 GCATGAGGGCCAGGATGCTGGCTATATCTTTGGGCTGCAGAGCCTGATAGACATTGTCACAGAGATAAGT
 GAGGAGAGTGGGGAG

ACGCGTACGCGGCCGCTCGAGCAGAACTCATCTCAGAAGAGGATCTGGCAGCAATGATATCCTGGATT
 ACAAGGATGACGACGATAAGGTTTAA

Protein Sequence:

>RR206446 representing NM_021660
 Red=Cloning site Green=Tags(s)

MSPAFRTMDVEPRTKGILLEPFVHQVGGHSCVLRFNETTLCCKPLVPREHQFYETLPAEMRRFTPQYKGVV
 SVRFEEDERNLCLIAAYPLKGDHGPVDIVDNDCEPKSKLLRWTNKKHHVLETEKSPKDWVRQHRKEEKM
 KSHKLEEEFEWLKSEVLYYSVEKKGTVSSQLKHYNPWSMKCHQQQLQRMKENAKHRNQYKFILLENLTC
 RYEVPCVLDLKMGTQRQHGDDASEEKAANQIRKCCQSTSAVIGVRVCGMQVYQAGTGQLMFMNKYHGRKLS
 VQGFKEALFQFFHNGRYLRRELLGPVLKLTTELKAVLERQESYRFYSSLLVIYDGKEWPEVTLDSDAED
 LEDLSEESADESAGAYAYKPLGASSVDVRMIDFAHTTCRLYGEDSVVHEGQDAGYIFGLQSLIDIVTEIS
 EESGE

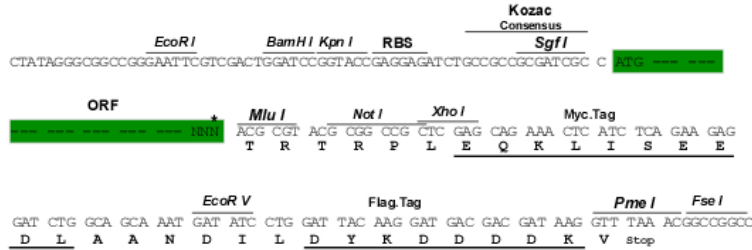
TRTRPLEQKLISEEDLAANDILDYKDDDDKV

Restriction Sites:

Sgfl-MluI

Cloning Scheme:

Cloning sites used for ORF Shutting:



* The last codon before the Stop codon of the ORF

ACCN: NM_021660

ORF Size: 1275 bp

OTI Disclaimer: The molecular sequence of this clone aligns with the gene accession number as a point of reference only. However, individual transcript sequences of the same gene can differ through naturally occurring variations (e.g. polymorphisms), each with its own valid existence. This clone is substantially in agreement with the reference, but a complete review of all prevailing variants is recommended prior to use. [More info](#)

OTI Annotation: This clone was engineered to express the complete ORF with an expression tag. Expression varies depending on the nature of the gene.

Components: The ORF clone is ion-exchange column purified and shipped in a 2D barcoded Matrix tube containing 10ug of transfection-ready, dried plasmid DNA (reconstitute with 100 ul of water).

- Reconstitution Method:**
1. Centrifuge at 5,000xg for 5min.
 2. Carefully open the tube and add 100ul of sterile water to dissolve the DNA.
 3. Close the tube and incubate for 10 minutes at room temperature.
 4. Briefly vortex the tube and then do a quick spin (less than 5000xg) to concentrate the liquid at the bottom.
 5. Store the suspended plasmid at -20°C. The DNA is stable for at least one year from date of shipping when stored at -20°C.

RefSeq: [NM_021660.2](#), [NP_067692.2](#)

RefSeq Size: 1894 bp

RefSeq ORF: 1278 bp

Locus ID: 59268

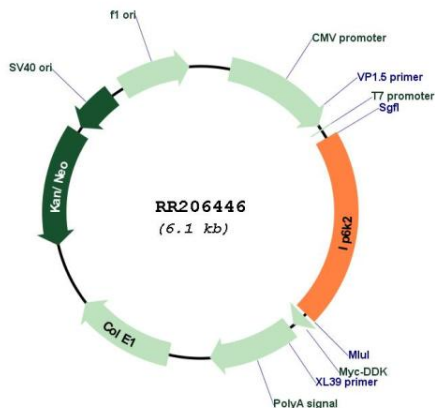
UniProt ID: [Q9R0U1](#)

Cytogenetics: 8q32

MW: 49.2 kDa

Gene Summary: activator protein for intestinal Na/Pi co-transport system; may play a role in the regulation of the intestinal Pi transport system by Pi restriction and 1;25-(OH)2D3 [RGD, Feb 2006]

Product images:



Circular map for RR206446