

## Product datasheet for **RR206404**

### **Cnga4 (NM\_053496) Rat Tagged ORF Clone**

#### **Product data:**

Product Type:	Expression Plasmids
Product Name:	Cnga4 (NM_053496) Rat Tagged ORF Clone
Tag:	Myc-DDK
Symbol:	Cnga4
Synonyms:	Cgn2; rOCNC2
Vector:	pCMV6-Entry (PS100001)
E. coli Selection:	Kanamycin (25 ug/mL)
Cell Selection:	Neomycin



[View online »](#)

**ORF Nucleotide Sequence:**

>RR206404 representing NM\_053496  
 Red=Cloning site Blue=ORF Green=Tags(s)

TTTTGTAATACGACTCACTATAGGGCGGCCGGAATTCGTCGACTGGATCCGGTACCGAGGAGATCTGCC  
 GCC**CGCATCGCC**

ATGAGCCAGGACGGCAAAGTGAAGACCACAGAGTCCACGCCCCAGCCCCAACCAAGCCAGGAAGTGGC  
 TGCCAGTCCTAGACCCATCTGGGGATTACTACTACTGGTGGCTGAACACAATGGTCTTCCAATCATGTA  
 CAACCTCATCATCGTTGTATGCAGGGCCTGCTTTCCTGACTTGCAGCACAGTTACCTGGTGGCCTGGTTC  
 GTGCTGGACTACAGAGTGACCTGCTGTACCTACTAGATATTGGGGTACGCTTCCACACAGGATTCTAG  
 AGCAGGGCATCCTGGTGGTAGACAAAGGCATGATCGCCAGTCGCTACGTCGCACCTGGAGCTTCTGT  
 GGACCTGGCGTCCCTGGTCCCCACAGATGCGGCCATGTGCAGCTGGGCCCCACATCCCTACACTCCGG  
 CTA AACCGCTTCTCCGAGTGCCCCGCCTCTTTGAGGCTTTTGATCGTACAGAGACCCGCACGGCATAACC  
 CAAATGCCTTCCGCATAGCCAAGCTGATGCTTTACATTTTGTGTATCCATTGGAACAGTTGCTTATA  
 CTTGCGCCTGTCCAGTACCTGGGCTTTGGACGGGATGCGTGGGTATACCCAGACCTGCGCAACCTGGC  
 TTTGAGCGCTTGGCGCGCAGTATCTCTACAGTCTACTTCTCCACTCTGATCCTGACCACAGTGGGTG  
 ACACGCCGCTGCCAGACCGAGAGGAAGAGTACCTCTTATGGTGGGTGACTTCTGCTGGCCGTCATGGG  
 TTTGCCACCATCATGGGTAGCATGAGCTCTGTCAATTTACAACATGAACACTGCAGATGCGGCCTTCTAC  
 CCAGACCATGCGCTGGTAAAGAAGTACATGAAGCTGCAGCATGTCAACAAGAGGCTGGAGCGGCGAGTTA  
 TTGACTGGTACCAGCATCTTCAGATCAACAAGAAGATGACCAACGAGGTAGCCATCTTGCAGCACCTGCC  
 TGAGCGGCTGCGGGCGGAGGTTGCTGTGTCGTCACCTGTCTACCCTGAGCCGAGTACAGATCTCCAG  
 AACTGTGAAGCCAGCCTGCTGGAAGAGCTGGTGTGAAGCTACAGCCCCAGACCTACTCGCCAGGCGAAT  
 ATGTGTGCCGCAAAGGGGACATTTGGCCGAGAGATGTACATCATCCGTGAGGGCCAGCTGTGGTATGC  
 CGATGATGGTGTACACAGTATGCTGTGCTTGGTGCAGGGCTCTACTTTGGGGAGATCAGTATCATCAAC  
 ATCAAAGGGAACATGTCTGGAACCCGACGAACAGCCAACATCAAGAGCCTAGTTATTAGACCTGTTCT  
 GCCTCAGCAAGGAGGATCTGCGGGAGGTAAGTGTGAGTACCCACAGGCCAGGCGGTATGGAGGAGAA  
 GGGCCGAGAAATCTTGCTTAAAAATGAATAAGTTGGATGTGAATGCTGAGGCAGCTGAGATCGCCCTCCAG  
 GAGGCCACAGAGTCTCGGCTCAAAGCCTCGACCAGCAGCTTGATGATCTGCAGACCAAGTTTGTCTGCC  
 TACTGGCTGAGCTGGAGTCCAGTGCAGTGAAGTAGCTTACCGCATCGAAAGGCTCGAGTGGCAGACTCG  
 AGAGTGGCCAATGCCAGAGGACATGGGTGAGGCTGATGATGAGGCTGAGCCTGGAGAAGGGACGTCCAAG  
 GATGGAGAGGGAAGGCTGGCCAGGAGGACCCTCAGACATAGAA

**ACGCGT**ACGCGGCCGCTCGAGCAGAAACTCATCTCAGAAGAGGATCTGGCAGCAAATGATATCCTGGATT  
 ACAAGGATGACGACGATAAGGTTTAA

**Protein Sequence:**

>RR206404 representing NM\_053496  
 Red=Cloning site Green=Tags(s)

MSQDGKVKTTSTPPAPTKARKWLPVLDPSGDYVYVWLNMTMVFPIIMYNLIIVVCRACFPDLQHSYLVAVF  
 VLDYTSDLLYLLDIGVRFHTGFLEQILVVDKGMIASRYVRTWSFLLDLASLVPTDAAYVQLGPHIPTLR  
 LNRFLRPRLFEAFDRTETRTAYPNAFRIAKLMLEYIFVVIHWNLSLYFALSRYLGFGRDAWVYPPAQP  
 FERLRRQYLYSFYFSTLILTTVGDTPLPDREEEYLFMVGDFLLAVMGFATIMGSMSSVIYNMNTADAAFY  
 PDHALVKKYMKLQHVNKRLERRVIDWYQHLQINKKMTNEVAIQLHLPERLRAEVAVSVHLSTLSRVQIFQ  
 NCEASLLEELVLKLPQTYSPGEYVCRKGDIGREMYIIREGQLAVVADDGVTQYAVLGAGLYFGEISIIIN  
 IKGNMGNRRRTANIKSLGYSDFCLSKEDLREVLSEYPQAQAVMEEKGREILLKMNKLDVNAEAEIALQ  
 EATESRLKGLDQQLDLQTKFARLLAELESSALKIAYRIERLEWQTREWPMPEDMGEADDEAEPGEGTSK  
 DGEKAGQEGPSDIE

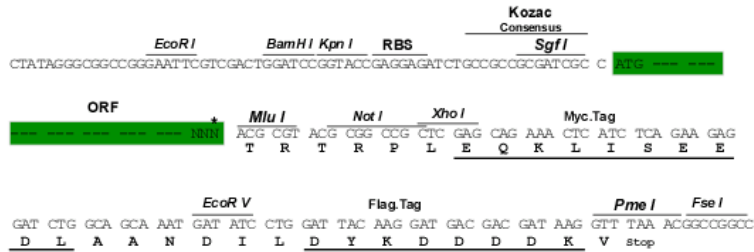
**TRTRPLEQKLI**SEEDLAANDILDYKDDDDKV

**Restriction Sites:**

Sgfl-MluI

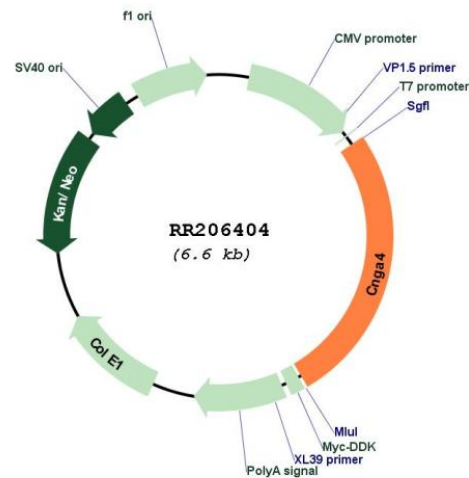
Cloning Scheme:

Cloning sites used for ORF Shutting:



\* The last codon before the Stop codon of the ORF

Plasmid Map:



ACCN: NM\_053496  
ORF Size: 1725 bp

<b>OTI Disclaimer:</b>	The molecular sequence of this clone aligns with the gene accession number as a point of reference only. However, individual transcript sequences of the same gene can differ through naturally occurring variations (e.g. polymorphisms), each with its own valid existence. This clone is substantially in agreement with the reference, but a complete review of all prevailing variants is recommended prior to use. <a href="#">More info</a>
<b>OTI Annotation:</b>	This clone was engineered to express the complete ORF with an expression tag. Expression varies depending on the nature of the gene.
<b>Components:</b>	The ORF clone is ion-exchange column purified and shipped in a 2D barcoded Matrix tube containing 10ug of transfection-ready, dried plasmid DNA (reconstitute with 100 ul of water).
<b>Reconstitution Method:</b>	<ol style="list-style-type: none"><li>1. Centrifuge at 5,000xg for 5min.</li><li>2. Carefully open the tube and add 100ul of sterile water to dissolve the DNA.</li><li>3. Close the tube and incubate for 10 minutes at room temperature.</li><li>4. Briefly vortex the tube and then do a quick spin (less than 5000xg) to concentrate the liquid at the bottom.</li><li>5. Store the suspended plasmid at -20°C. The DNA is stable for at least one year from date of shipping when stored at -20°C.</li></ol>
<b>RefSeq:</b>	<a href="#">NM_053496.2</a> , <a href="#">NP_445948.2</a>
<b>RefSeq Size:</b>	2355 bp
<b>RefSeq ORF:</b>	1728 bp
<b>Locus ID:</b>	85258
<b>UniProt ID:</b>	<a href="#">Q64359</a>
<b>Cytogenetics:</b>	1q32
<b>MW:</b>	65.8 kDa
<b>Gene Summary:</b>	olfactory cyclic nucleotide gated cation channel [RGD, Feb 2006]