

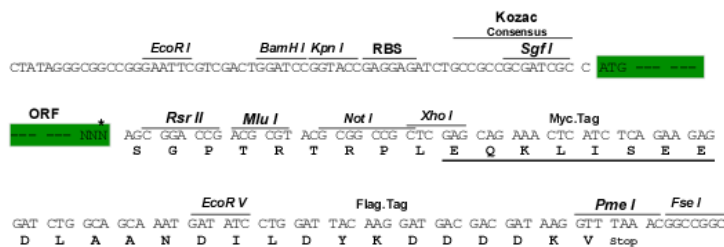
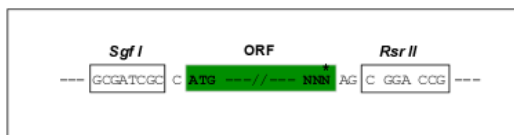
Product datasheet for RR206402

Insrr (NM_022212) Rat Tagged ORF Clone

Product data:

Product Type:	Expression Plasmids
Product Name:	Insrr (NM_022212) Rat Tagged ORF Clone
Tag:	Myc-DDK
Symbol:	Insrr
Synonyms:	Sirr
Mammalian Cell Selection:	Neomycin
Vector:	pCMV6-Entry (PS100001)
E. coli Selection:	Kanamycin (25 ug/mL)
Restriction Sites:	Sgfl-RsrII
Cloning Scheme:	

Cloning sites used for ORF Shuttling:



* The last codon before the Stop codon of the ORF

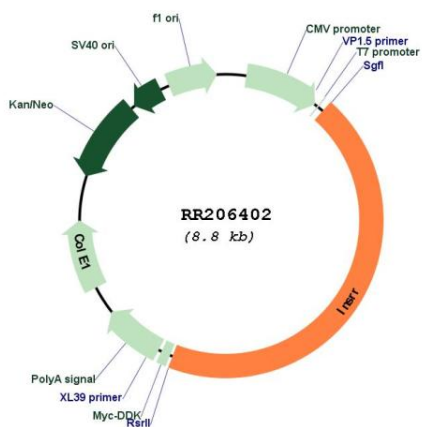
ACCN:	NM_022212
ORF Size:	3900 bp



[View online >](#)

OTI Disclaimer:	The molecular sequence of this clone aligns with the gene accession number as a point of reference only. However, individual transcript sequences of the same gene can differ through naturally occurring variations (e.g. polymorphisms), each with its own valid existence. This clone is substantially in agreement with the reference, but a complete review of all prevailing variants is recommended prior to use. More info
OTI Annotation:	This clone was engineered to express the complete ORF with an expression tag. Expression varies depending on the nature of the gene.
Components:	The ORF clone is ion-exchange column purified and shipped in a 2D barcoded Matrix tube containing 10ug of transfection-ready, dried plasmid DNA (reconstitute with 100 ul of water).
Reconstitution Method:	<ol style="list-style-type: none">1. Centrifuge at 5,000xg for 5min.2. Carefully open the tube and add 100ul of sterile water to dissolve the DNA.3. Close the tube and incubate for 10 minutes at room temperature.4. Briefly vortex the tube and then do a quick spin (less than 5000xg) to concentrate the liquid at the bottom.5. Store the suspended plasmid at -20°C. The DNA is stable for at least one year from date of shipping when stored at -20°C.
RefSeq:	NM_022212.2 , NP_071548.2
RefSeq Size:	4997 bp
RefSeq ORF:	3903 bp
Locus ID:	60663
UniProt ID:	Q64716
Cytogenetics:	2q34
MW:	144.8 kDa
Gene Summary:	member of the insulin receptor family [RGD, Feb 2006]

Product images:



Circular map for RR206402