

Product datasheet for **RR206364**

Cdc25b (NM_133572) Rat Tagged ORF Clone

Product data:

Product Type:	Expression Plasmids
Product Name:	Cdc25b (NM_133572) Rat Tagged ORF Clone
Tag:	Myc-DDK
Symbol:	Cdc25b
Mammalian Cell Selection:	Neomycin
Vector:	pCMV6-Entry (PS100001)
E. coli Selection:	Kanamycin (25 ug/mL)



[View online »](#)

ORF Nucleotide Sequence:

>RR206364 representing NM_133572
 Red=Cloning site Blue=ORF Green=Tags(s)

TTTTGTAATACGACTCACTATAGGGCGGCCGGGAATTCGTCGACTGGATCCGGTACCGAGGAGATCTGCC
 GCC**CGGATCGCC**

ATGGAGGTACCCCGCAGAAGTCTGCGCCGGGCTCAGCTCTCAGTACTGCCCGCTGCTGGTGGCATT
 AGCGGCCGCGCCACCTCTCAGGCTTTGGGTTGGGTCTGATGGCTTCTGGGTCTCCAGAGCGTCCGGC
 TTCTCTCTCCGGTTACCACTCTTACCCAGACCATGTACAACCTCGCAGGGCTCGGCAGCGAGACCCCA
 AAAACTCAAGTAGGAAGCCTGTCGTTCCAGAACAGGCTGACAGACCTGTCCCTGTCCAGACGTACCTCTG
 AGTGCTCCCTGTCATCTGAGTCTCAGAATCTTCTGATGCAGGTCTCTGCATGGACTCCCCTAGCCCTAT
 GGACCCACAGACAGCAGAGCGCACGTTTGAACAGGCCATTAGGCAGCCAGTCCGGTCATTCAAAGATG
 CAATTTACCATAAAAGCTTCGGTCTTGGCAGTGAGGCTGCTGGACATAGTCCTGTGCTACAGAATCA
 CCAACTCCAAGCACTGGACAGCTGGGAGAAAGATGAAGCAGGCTACAGAGCTGCCAGTAGTCTGGGGA
 GGACAAAGAGAACGATGGATATATCTTCAAGATGCCACAGAAGCTCCCTCATTCCAGCTCTGCCGAGCT
 TTGGCAGAGTGGGCCAGCCGAGAGAGGCTTTACCCAGAGGCCAGCTAGCCCTGACTTGATGTGTC
 TTACCACTGACGGGAAGATGGACGTGGAGGAGGCGAGCCCTGTGGCACAGTCTTCTCTCTGACTCCTGT
 CGAAAGGGCTTGTGAAGAAGATGACGGATTTGTGGACATCCTAGAGAGTGATTTAAAGGATGATGATATG
 GTCCCCGAGGCATGGAGAACCTCATTAGTGCTCCACTGGTCAAAAAGCTGGATAAGGAAGAGGAACAGG
 ATCTCATCATGTTTCAGCAAGTGCCAGCGGCTTTCCGCTCTCCATCCATGCCGTGCAGTGTGATCCGGCC
 CATCCTCAAGAGGCTAGAGCGGCCACGACAGGGACGTGCCTGTCTGAGCAAGCGCAGGAAGAGTGGG
 ACACCCCTGGAAGAGCAGCAGCTTGAAGAACCAAGGCCCGGGTCTTCCGCTCAAAGTCCCTGTGTACAG
 AGATTGAGAGCATCCTGGACAGTGACCACCGTGGCCTGATTGGAGATTACTCTAAGGCCTCTCTCTGCA
 GACTGTGGATGGCAACACCAAGACCTCAAGTACATCTACCAGAAACTATGGTGGCCCTGTTGACAGGC
 AAGTTCAGCAACATCGTGGAGAAGTTTGAATTTGGACTGCAGATACCCCTATGAGTATGAAGGCGGGC
 ATATCAAGAATGCTGTGAAGTGGCCCTGGAACCGGATGCCGAGACCTTCTGCTGAAGCATCCCATCAC
 GCCTTGTAACTGGACAAGAGAATCATCCTCATTTTCCACTGTGAATTCTCATCTGAGCGTGGACCACGG
 ATGTGCCGCTTTCATCAGGAACGGGACCGTGCAGCTAACGACTATCCAGCCTGTACTACCTGAGATGT
 ACATCCTCAAAGGCGGCTACAAGGAGTTCTTCCCGCAGCATCCGAACCTTTGTGAGCCCCAGGACTACCG
 ACCCATGAACCATGCAGCTTCCGGGATGAGCTGAGGAACCTCCGCTCAAGACACGCAGCTGGGCTGGG
 GAACGGAGTACCACCAACTCTGTAGCAGGCTGCAAGACCAG

ACGCGTACGCGGCCGCTCGAGCAGAAACTCATCTCAGAAGAGGATCTGGCAGCAAATGATATCCTGGATT
 ACAAGGATGACGACGATAAGGTTTAA

Protein Sequence:

>RR206364 representing NM_133572
 Red=Cloning site Green=Tags(s)

MEVPPQKSAPGSALSTARVLGGIQRPHLSGFGFSDGLLGSPERAASSSPVTTLTQTMYNLAGLGSETP
 KTQVGSLSFQNRLTDLSSLRRTSECSLSESSSDAGLCMDSPSPMDPQTAERTFEQAIQAASRVIQKM
 QFTIKASVFASEAAGHSPVLQNIINSQALDSWEKDEAGYRAASSPGEDKENDGYIFKMPQKLPHSSSARA
 LAEWASRREAFTQRPSSAPDLMCLTTDGMKVVEEASPVAQSSSLTPVERACEEDDGFVDILESDLKDDDM
 VPAGMENLISAPLVKKLDEEEQDLIMFSKQRLFRSPSPMPCSVIRPILKRLRPHDRDVPVLSKRRKSG
 TPLEEQLEEPKARVFRSKSLCHEIESILSDSDHRLIGDYSKAFLLQTVDGKHQDLKYISPETMVALLTG
 KFSNIVEKFVIVDCRYPYEYEGGHKNAVNLPLEPDAETFLLKHPITPCNLDKRIILIFHCEFSSEGRPR
 MCRFIRERDRAANDYPSLYPEMYILKGGYKEFFPQHPNFCEPQDYRPMNHAAFRDELRFRLKTRSWAG
 ERSTTQLCSRLLQDQ

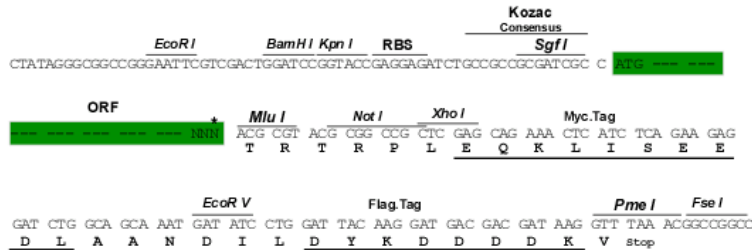
TRTRPLEQKLISEEDLAANDILDYKDDDDKV

Restriction Sites:

SgfI-MluI

Cloning Scheme:

Cloning sites used for ORF Shutting:



* The last codon before the Stop codon of the ORF

ACCN: NM_133572

ORF Size: 1722 bp

OTI Disclaimer: The molecular sequence of this clone aligns with the gene accession number as a point of reference only. However, individual transcript sequences of the same gene can differ through naturally occurring variations (e.g. polymorphisms), each with its own valid existence. This clone is substantially in agreement with the reference, but a complete review of all prevailing variants is recommended prior to use. [More info](#)

OTI Annotation: This clone was engineered to express the complete ORF with an expression tag. Expression varies depending on the nature of the gene.

Components: The ORF clone is ion-exchange column purified and shipped in a 2D barcoded Matrix tube containing 10ug of transfection-ready, dried plasmid DNA (reconstitute with 100 ul of water).

Reconstitution Method:

1. Centrifuge at 5,000xg for 5min.
2. Carefully open the tube and add 100ul of sterile water to dissolve the DNA.
3. Close the tube and incubate for 10 minutes at room temperature.
4. Briefly vortex the tube and then do a quick spin (less than 5000xg) to concentrate the liquid at the bottom.
5. Store the suspended plasmid at -20°C. The DNA is stable for at least one year from date of shipping when stored at -20°C.

RefSeq: [NM_133572.1](#), [NP_598256.1](#)
RefSeq Size: 2804 bp

RefSeq ORF: 1725 bp

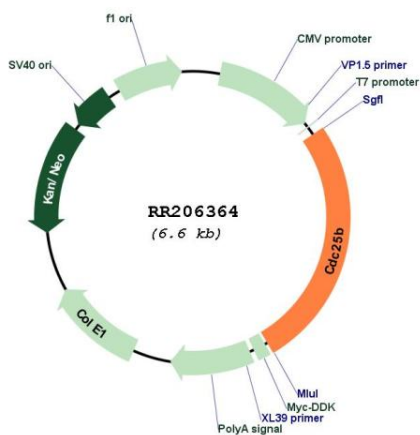
Locus ID: 171103

UniProt ID: [P48966](#)
Cytogenetics: 3q36

MW: 64.3 kDa

Gene Summary: phosphatase; involved in the start of the cell cycle [RGD, Feb 2006]

Product images:



Circular map for RR206364