

Product datasheet for **RR206357**

Plb1 (NM_138898) Rat Tagged ORF Clone

Product data:

Product Type:	Expression Plasmids
Product Name:	Plb1 (NM_138898) Rat Tagged ORF Clone
Tag:	Myc-DDK
Symbol:	Plb1
Synonyms:	Phlpb
Vector:	pCMV6-Entry (PS100001)
E. coli Selection:	Kanamycin (25 ug/mL)
Cell Selection:	Neomycin
ORF Nucleotide Sequence:	>RR206357 representing NM_138898 Red=Cloning site Blue=ORF Green=Tags(s)

TTTTGTAATACGACTCACTATAGGGCGGCCGGAATTCGTCGACTGGATCCGGTACCGAGGAGATCTGCC
GCC**CGATCGCC**

ATGGAGTCATGGCCAGGCGTTTCCCTGGTGGGACTGCTGCTGCTACTGCTGGGACAAGGGCCCTCCC
AAATCCACGGCTCTTCTGGAGAAAACACATCGCAGCCCCAGCAAGTGTTCGGACCCTGAAGAATTTTTTC
ATTCCTTGCAAGCCAAAGAAGTTAGAAGTGTGCTTTCTAAGTCAGTTCACCTCTGAGACCCCTCA
GACATTAAGTCTGGCAGCCATCGGCAACCTAGAACTCCTCCAGCCCTGGCTCAGGCGTGGTCAACA
TGAGAAAACCTCAAAGCCTCGAGAGCGAACTACAGAATGTGTGCATAGGAATCATGACAGCCCTTCAGA
TATCATCAGACATTTCAACCTTCTGTTCTGATGCCACGTTTCTCCTGGGAAGGGTACTGCAGGCCAC
ACTACTATTGCCGAAGACTTGTGGATTCAAGGCTAAAGAGCTGGTGGGATCTGAAAGACAACCCGGAAC
TTGATTTTGAGAAGGACTGGAACTCATCACTGTGCTTTCAGTAACACAAGCCAGTGCCACCTGTGTT
CTCTGATCAGCAGAAAAGGCACTTGATGAAGCAGATGGAGATGCTGTGAGGGTGTGGATTACCTGCAT
CGTGAGGTCCCCAGAGCGTTTGTGAATTTGGTGGATCTCTGAGGTTTTGACCATGGCTCAGCAGCATC
AAGAGACTGGTTTCAGCCCTGCACAGAGATTTGCAAATGCTCAGAGGAAATAACGAAGTTATCCAAGGC
TGTCATGCAGTGGTCTATCAGGAAGCCTGGGAAGATCTCCTGGCCTCCAGCAAGTTCAATAAGCATGAG
ACCTTCGCTGTGGTTTTCCAGTCTTTCTCTCTGAGGTAGAACTACCTTGGAGAGGCCCTCGCCCCAGG
ATTCCACCACGCTCGCCCTCAGGATCTGGAATAGCATGATGGAACAGTGGGTCGAAAGGATGGGACACT
CAATGAAGCAGAGAGAAAAACAATGAAATGTCCCTCTCAGGAGAGCCCCTATCTGTTACCTACAGAAAT
AGCAACTACCAGGCCAGACAGCTGAAACCCATAGGAAAGTTTCAGATGAAAGAAGGAACAAAATTCACCT
GTCCTGACAAAGACCCCTCGGACTCCATCCCCACAACAGTTCACAGGCTGAGGCCGGCTGACATCAAGGT
CATCGGAGCCATGGGTGACTCGCTCACGGCAGGCAACGGGGCAGGGTCCAGCCCTGGGAATGTCTGGAT
GTCTTAACCTCAATACCGAGGCCTGTCGTGGAGTGTGGCGGAGATGAGACCATCGAGACCGTGACCACCC
TAGCCAACATCCTCCGGGAATTCACCCCTCCTTGAAGGGCTTCTCTGTTGGCACTGGGAAAGAAAACAC
TCCCCGAGCATCCTTCAACCAGGCCGTAGCAGGAGCCAAATCTGATGGCTTAGCTGCCAGGCCAAAAAG
CTGGTGAGCCTGATGAAGGATGACAAGACAATAAACTTTCAGGAAGACTGGAAGATAACTACTGTGTTTA



[View online »](#)

TAGGAGGCAACGACCTCTGTGGCTCCTGCAATAACCTGGCTCGCTTTTCTCCCCAACCTTCACAGACAA
CATCAAGACGGCCCTGGACATCCTCCATGCAGAGGTTCCCGGGCCTTTGTGAACATGGTCTCGGTGATT
GAGATCACCCCTTGAGAGAAGTGTCAATGAACCTAAAGTCAGCTGCCACGGATGATCCTCAGGAGCC
TGTGTCCTTGTGCTTGAACCTTGGTGAGAAGTCAAGCAAGTTCGCCAAGTGTGGAAAGGAACAGGCA
GTATCAGGAAGAACTGGAAAAGTATTGAGAGTGGCCGATACGACACCAGGGATGACTTCACCGTGGTC
CTCCAGCCCATGTTTAAAAATGTCGTATGCCACGGACCCTGGAGGGCTTGCCCGACAGCTCTTTCTTTG
CCCTGACTGTTCCACTTCAATGTCAAGACTCAGCTCGCTCAGCCATCGCCCTCTGGAAGAACATGCT
AGAACCTGTGGCCGCAAGACAAGACATCAGAATTTTGAATCAAGGTCCCTATCATGTGTCCAAACCAG
ACCTCACCGTTTCTGAGCACCACCAAGAACAGCAACCTGGGACATGGAACCTCGATGTCTTGTGAGGAGA
AAGCCCCCTCTGCCTCACCACCAACCTCAGTGCATACCCTGAGACCTGCAGACATCCAAGTGTGGCAGC
TCTGGGAGACTCTGTGACTGCTGGCAATGGAATCAGCTCCAAGAAGGTGATCTCGCTGATGTTACCACA
CAGTATCGAGGACTGTCTACAGTGTGGTGGGACAAGTTCTGGAGAATGTGACCACCTTGCCCAACA
TCCTCCGGGAATTAATGGAATCTCACAGGCTACTCAGTCGGAACCGGTGACGTCAACTCTGCAAGCGC
GTTCTTAACAGGCTGTCCCTGGGGCAAAGGCTGAGAACCTTGAAGTCAAGTCCAGACTCTGATTTCAG
AAGATGAAGAATGACACCAGAGTGAACCTTCCCAAGACTGGAAGGTCACTACTGTGATGATTGGGGCCA
GGACTTGTGACTTCTGCAAGGATTCGAATCGTTACTCTGCAGCCAATTTTTCTGACCATCTCCGCAA
TGCCCTTGACATCCTGCATAAGGAGGTACCCAGAGCCCTGGTCAACCTTGTGGACTTCATGAACCCAGT
ATCATTCCGGAAGTGTCTGAAGAACCAGACAAGTGCCTGTGAATCAGACCAGTGTCTGTGCAACT
GTGTTCTGACCCAGGGGAGGATCCCATGAGCTGGCAAGGTTGGAGGCCCTTACCAAAATCTACCAGAG
TAGCATGCTTCAACTGGTTGAGTCAGGCCGCTACGACACCCGGGAGGATTTCTCTGTGGTACTGCAGCCC
TTTCTCTCAACATCAGGCTCCCATCTAGAGAATGGGAATCCAGATACATCTTCTTTGCCCCAGACT
GCATCCCTAAGCCAGAAGTCCACACTCAGCTCGCGAGAGCCCTTTGGGCAATATGCTGAACCCCT
GGGAAAGAAAATGGATACTTTGGACCCGAAAGAACTCATAGCTTTGGCCTGCCCCACCAAGCAAGCC
TTCTGAGAACCCTCCGGAACAGTAACTACACGTACCCTATCAAGCCAGCCATTGAGAATTGGGGCAGTG
ACTTCTGTGCACAGAGCAGAGTCTTCCAGCAAGGTACCCACCTCAGTTCATGAGCTCCGACCATCAGA
CATCAAGGTGGTGGCAGCAATGGGTGACTTTCTGACGACAGCCACCGGAGCTCGACCAAGTGAAGTCCAGC
AGTCTAGACACCCCTGGAGGGGCTGTCTGGAGCATTGGAGGAGATGGAACGTTGGAGACCCATACCA
CACTGCCAACATCCTGAAGAAGTTCACCCCTCCATCCTTGGATTCTCCACCGTACCCTGGAGAACAC
GGCAGGATTAATGTGGCAGAAGAAGGCCAGAGCTCAGGACATGCCGGCCAGGCTCAGGCCCTGGT
AAGAAGATGAAAAGCACCCCTACAATCAACATACAGGAAGACTGGAAGCTGATTACTCTCATCGGGA
ACAACGACCTGTGCTTTACTGTGAGGATCCGGAGAAGTCAACCCAGGGAGTATGTCAAGTACATCCA
GCATGCCTTGACATCTTCTATGAGGAGCTTCCAGGGTTTTATCAACGTGGTGAAGTATGGAGCTG
TCCGGTGTGCTCCAGCAGCCAGGGCGGAAATGTGCCATGCCGTTGGCTGTCCAGAAAACTGCAGTTGCC
TAAACGCTCTCAAAACCTCATGGCAATGCAGGAGCTGAAGAAAGTCAACGGGAACCTCCAGAGTGCCT
CTCGGAGCTCTCCTACTGGCATCGGTACATGCAGCGTGAGGACTTTGCAGTCACTGTCCAGCCTTTCTT
CGGAATACCTTTGTCCCACTGGATGAGCGTGGGGGCTCGACCTCACTTTCTTCTCTGAAGACTGTTTCC
ACTTCTCAGTCCGTGGGCATGCTGAGATGGCCATTGCCCTCTGGAACAACATGCTGGAACCAAGTGGGCAA
GAAGACAACCTCCAATAACTTACATACAACCCGACCAAACTCAAGTGTCCCTCGCCTGAAAACCCCTTTC
CTCTACACTGTCCGGAACAGTCAAGTCTTCTAGACAAGGCTAAAGAAAACCTCAATACACTCTACTGGG
CAGTGCCAGTGGCTGCAGTAGGTGGCCTGGTAGTTGGCATCCTTGAATGATGTTGTGGAGAAGTGTGAG
ACTCGTCCAA

ACGCGTACGCGGCCGCTCGAGCAGAACTCATCTCAGAAGAGGATCTGGCAGCAAATGATATCCTGGATT
ACAAGGATGACGACGATAAGGTTTAA

Protein Sequence: >RR206357 representing NM_138898
 Red=Cloning site Green=Tags(s)

```
MESWPGVSLVGLLLLLLGGQGPSQIHGSSGENTSQPQQVFRTLKNFSFPCKPKKLEL SVLSKSVHSLRPS
DIKLVAAGNLETPPAPGSGVNMKEKQSLSESELQNVICIGIMTALSDIIRHFNPSVLMPTCSPGKGTAGH
TTIAEDLWIQAKELVRHLKDNPELDFEKDWKLITVLF SNTSQCHLCSSDQKQRHLMKHMESL SGVLDYLH
REVPRAFVNLVDLSEVL TMAQQHQETGFSPAPEICKCSEIEITKLSKAVMQWSYQEAWEDLLASSKFNKHE
TFAVVFQSFSEVELPLERPSPQDSTTLALRIWNSMMEPVGRKDGTLNEAERKTMKCP SQESPYLFTYRN
SNYQARQLKPIGKFKMKEGKFTTCDPKDPSDSIPTTVHRLRPADIKVIGAMGDSL TAGNGAGSSPGNVLD
VLTQYRGLSWSVGGDETIETVTTLANILREFNPSLKGFSVGTGKENTPRASFNQAVAGAKSDGLAAQAKK
LVSLMKDDKTINFQEDWKIITVFIGGNDLCGSCNNLARFSPQTFDNIKTALDILHAEVPRAFVNMVSVI
EITPLREL FNEPKVSCPRMILRSLCPCVLNLGENSAELAQLVERNROYEETGKLI ESGRYDTRDDFTVV
LQPMFENVVMPRTLEGLPDSSF FAPDCFFHFVVKTHARSAIALWKNMLEPVGRKTRHQNFEIKVPI MCPNQ
TSPFLSTTKNSNLGHGTSMSCEEKAPSASPTSVHTLRPADIQVVAALGDSVTAGNGISSQEGDLADVTT
QYRGLSYSAGGDKFLENVTTL PNILREFNGNL TGYSVGTGDVNSASAFLNQAVPGAKAENLASQVQTLIQ
KMKNDTRVNFHQDWKVI TVMIGASDLCDFCKDSNRYSAANFSDHLRNALDILHKEVPRALVNLVDFMNP S
IIRQVFLKNPKCPVNQTSVLCNCVLTGEGDSHELARLEAFTKSYQSSMLQLVESGRYDTRDFSVVLQP
FLFNIRLPILENGNPDTSFFAPDCILL SQKFHTQLARALWANMLEPLGKKMDTLPKELIALACPTKDKP
FLRTFRNSNYTYPKPAIENWGSDFLCTEQSPSSKVPTSVHELRP SDIKVVAAMGDFTTATGARPSESS
SLDTPWRGLSWSIGGGTLEHTTLPNILKKNFNSILGFSTGTLENTAGLNVAEEGARAQDMPAQAQALV
KKMKSTPTINI QEDWKIITLLIGNNDLCYCEDPENYSTREYVKYIQHALDIFYEELPRVF INVVEVMEL
SGLLHDQGGKCAMPLAVQKNC SCLKRSQNL MAMQELKKVNGNLQSAL SELSYWHRYMQREDFAVTVQ PFF
RNTFVPLDERGGDLDTFF SEDCFHF SVRGAEMAIALWNNMLEPVGKKTT SNNFTYNRTKLKCPSPENPF
LYTVRNSQILLDKAKENSNTLYWAVPVAAVGGLVV GILGMMLWRTVRLVQ
```

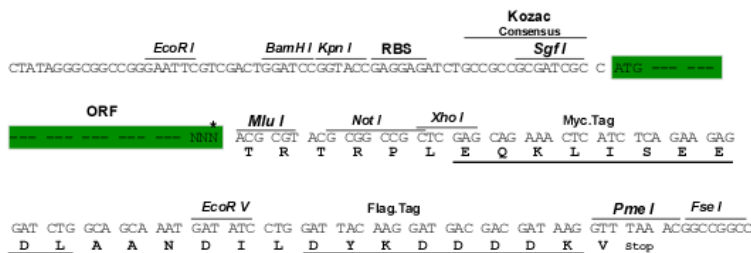
TRTRPLEQKLISEEDLAANDILDYKDDDDKV

Restriction Sites:

SgfI-MluI

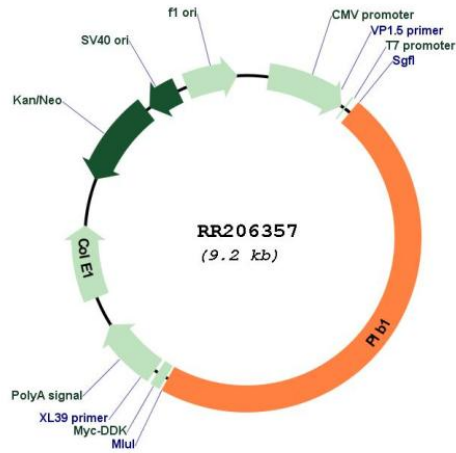
Cloning Scheme:

Cloning sites used for ORF Shutting:



* The last codon before the Stop codon of the ORF

Plasmid Map:



ACCN: NM_138898

ORF Size: 4350 bp

OTI Disclaimer: The molecular sequence of this clone aligns with the gene accession number as a point of reference only. However, individual transcript sequences of the same gene can differ through naturally occurring variations (e.g. polymorphisms), each with its own valid existence. This clone is substantially in agreement with the reference, but a complete review of all prevailing variants is recommended prior to use. [More info](#)

OTI Annotation: This clone was engineered to express the complete ORF with an expression tag. Expression varies depending on the nature of the gene.

Components: The ORF clone is ion-exchange column purified and shipped in a 2D barcoded Matrix tube containing 10ug of transfection-ready, dried plasmid DNA (reconstitute with 100 ul of water).

Reconstitution Method:	<ol style="list-style-type: none">1. Centrifuge at 5,000xg for 5min.2. Carefully open the tube and add 100ul of sterile water to dissolve the DNA.3. Close the tube and incubate for 10 minutes at room temperature.4. Briefly vortex the tube and then do a quick spin (less than 5000xg) to concentrate the liquid at the bottom.5. Store the suspended plasmid at -20°C. The DNA is stable for at least one year from date of shipping when stored at -20°C.
RefSeq:	NM_138898.1 , NP_620253.1
RefSeq Size:	4590 bp
RefSeq ORF:	4353 bp
Locus ID:	192259
UniProt ID:	O54728
Cytogenetics:	6q14
MW:	161.1 kDa
Gene Summary:	exhibits broad lipolytic activities (PLA2, lysophospholipase, and lipase activities); may mediate terminal digestion, or membrane digestion, of dietary lipids and biliary phospholipids [RGD, Feb 2006]