

Product datasheet for **RR206340**

Negr1 (NM_021682) Rat Tagged ORF Clone

Product data:

Product Type:	Expression Plasmids
Product Name:	Negr1 (NM_021682) Rat Tagged ORF Clone
Tag:	Myc-DDK
Symbol:	Negr1
Vector:	pCMV6-Entry (PS100001)
E. coli Selection:	Kanamycin (25 ug/mL)
Cell Selection:	Neomycin
ORF Nucleotide Sequence:	>RR206340 representing NM_021682 Red=Cloning site Blue=ORF Green=Tags(s)

TTTTGTAATACGACTCACTATAGGGCGGCCGGAATTCGTCGACTGGATCCGGTACCGAGGAGATCTGCC
GCC**CGATCGCC**

ATGGTGCTCTGGCGCAGGGCGCTTGTGTCTCGAACCAGTGGCTGGCGCGGTGCTTCTGAGCCTGTGCT
CTTGCTCCCGCTGGGCAGAGCGTGGACTTCCCCTGGCGGCCGTGGACAACATGCTGGTGAGGAAAGG
TGACACGGCGGTGCTCAGGTGTTACTTGAAGACGGAGCATCAAAGGGCGCCTGGCTCAACAGGTCAAGT
ATCATTTTTGCTGGAGGTGACAAGTGGTCAAGTGGACCCTCGAGTTTCCATTTCCACATTGAATAAAAGGG
ACTACAGCCTCCAGATACAGAACGTTGATGTGACAGATGATGGCCCGTACACCTGTTCTGTGCAGACCCA
ACACACACCACGGACGATGCAGGTTTCTCTCACTGTGCAAGTTCACCGAAAATATATGACATCTCAAAT
GACATGACCATCAATGAAGGAACCAACGTCACCCTTACTTGTGGCCACTGGGAAGCCAGAGCCCGCCA
TTTCTGGAGGCATATCTCCCATCAGCAAAACCATTTGAAAATGGACAATTTTGGACATTTATGGAAT
TACAAGAGACCAGGCTGGGGAGTACGAATGCAGTGCAGAGAACGATGTATCATTCCAGATGTGAAGAAA
GTGAGAGTGGTCGTAACCTTTCGCCTACAATTCAGGAAATTAATCTGGCACAGTGACCCTGGACGCA
GTGGACTGATAAGATGTGAGGGTGCAGGTGTGCCGCCAGCCTTCGAGTGGTACAAAGGAGAGAAGAG
ACTCTTCAATGGCAACAAGGAATTATCATTGAGAAATTTAGCACAAGATCCATCCTCACAGTGACCAAC
GTGACACAGGAGCACTTCGGCAACTATACTTGTGTGGCTGCCAACAAGTTGGGCACAACCAACGCGAGCC
TGCCCCTCAACCTCCAAGCACAGCCAGTATGGAATTAAGTGGGAGCGCCTGTGACCTCTTCTCCTGCTG
GAGCCTTGCCTTGACACTATCTTCTGTCATCAGCATATTCTACCTGAAGAATGCCATCCTACAA

ACGCGTACGCGGCCGCTCGAGCAGAACTCATCTCAGAAGAGGATCTGGCAGCAATGATATCCTGGATT
ACAAGGATGACGACGATAAGGTTTAA



[View online »](#)

Protein Sequence: >RR206340 representing NM_021682
Red=Cloning site Green=Tags(s)

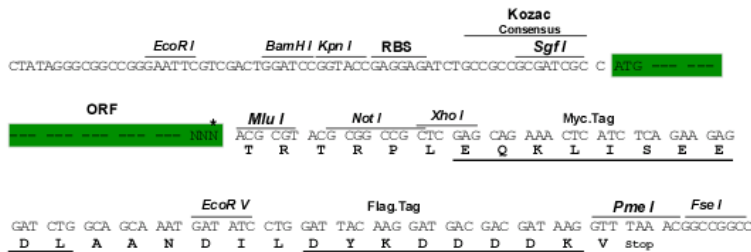
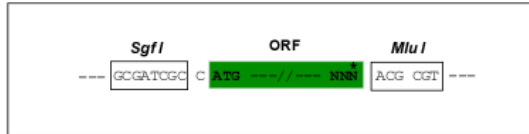
MVLLAQGACCSNQWLAAVLLSLCCLPAGQSVDFPWAAVDNMLVRKGD⁺AVLRCYLEDGASKGAWLNRSS
 IIFAGGDKWSVDPRVISISTLNKRDYSLQIQNVDTVDDGPYTC⁺SVQ⁺TQHTPRMQVHLTVQVPPKIYDISN
 DMTINEGTNVTLTCLATGKPEPAISWRHISPSAKPFENGQYLDIYGITRDQAGEYECSAENDVSFPDVKK
 VRVVVNFAPTIQEIKSGVTTPGRSGLIRCEGAGVPPPAFEWYKGEKRLFNGQQGIIIQNFSTRSILTVTN
 VTQEHFGNYTCVAANKLGTNASLPLNPPSTAQYGITGSACDLFCW⁺SLALTLSSVISIFYLKNAILQ

TRTRPLEQKLISEEDLAANDILDYKDDDDKV

Restriction Sites: SgfI-MluI

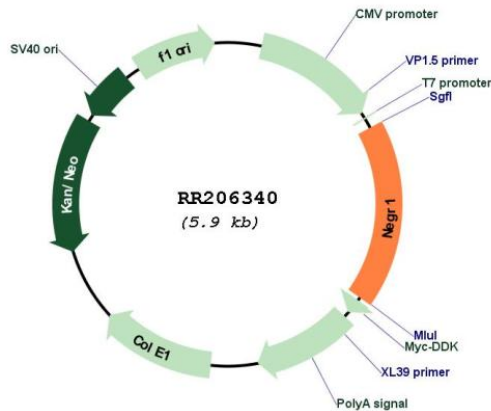
Cloning Scheme:

Cloning sites used for ORF Shutting:



* The last codon before the Stop codon of the ORF

Plasmid Map:



ACCN: NM_021682

ORF Size:	1044 bp
OTI Disclaimer:	The molecular sequence of this clone aligns with the gene accession number as a point of reference only. However, individual transcript sequences of the same gene can differ through naturally occurring variations (e.g. polymorphisms), each with its own valid existence. This clone is substantially in agreement with the reference, but a complete review of all prevailing variants is recommended prior to use. More info
OTI Annotation:	This clone was engineered to express the complete ORF with an expression tag. Expression varies depending on the nature of the gene.
Components:	The ORF clone is ion-exchange column purified and shipped in a 2D barcoded Matrix tube containing 10ug of transfection-ready, dried plasmid DNA (reconstitute with 100 ul of water).
Reconstitution Method:	<ol style="list-style-type: none">1. Centrifuge at 5,000xg for 5min.2. Carefully open the tube and add 100ul of sterile water to dissolve the DNA.3. Close the tube and incubate for 10 minutes at room temperature.4. Briefly vortex the tube and then do a quick spin (less than 5000xg) to concentrate the liquid at the bottom.5. Store the suspended plasmid at -20°C. The DNA is stable for at least one year from date of shipping when stored at -20°C.
RefSeq:	NM_021682.1 , NP_067714.1
RefSeq Size:	1809 bp
RefSeq ORF:	1047 bp
Locus ID:	59318
UniProt ID:	Q9Z0J8
Cytogenetics:	2q45
MW:	37.9 kDa
Gene Summary:	glycosylphosphatidylinositol-anchored cell adhesion protein [RGD, Feb 2006]