

Product datasheet for **RR206301**

Mif4gd (NM_001014122) Rat Tagged ORF Clone

Product data:

Product Type: Expression Plasmids
Product Name: Mif4gd (NM_001014122) Rat Tagged ORF Clone
Tag: Myc-DDK
Symbol: Mif4gd
Synonyms: RGD1309685
Vector: pCMV6-Entry (PS100001)
E. coli Selection: Kanamycin (25 ug/mL)
Cell Selection: Neomycin
ORF Nucleotide Sequence: >RR206301 representing NM_001014122
Red=Cloning site Blue=ORF Green=Tags(s)

TTTTGTAATACGACTCACTATAGGGCGGCCGGAATTCGTCGACTGGATCCGGTACCGAGGAGATCTGCC
GCC**CGATCGCC**

ATGGGCGAGGCCAGCAGAGATGAGTATAAAATCCAGTCTTTCGATGCAGAGACTCAGCAGCTGCTGAAGA
CTGCACTCAAAGATCCAGGTGCTGTGGACCTGGAGAGAGTAGCCAACGTGATTGTGGACCATTCTGCA
GGACTGCGTATTCAGCAAGGAAGCAGGACGGATGTGCTACGCCATTATTCAGGCAGAGAGTAAGCAAGCA
GGCCAGAGCGTCTCCGCCGTGGGCTCCTCAACCGGCTGCAGAAGGAGTACGATGCCCGGAGCAGCTTC
GAGCATGCTCCCTGCAGGGCTGGGTCTGCTATGTACCTTTATCTGCAACATCTTTGACTACCTGAGGGT
GAACAACATGCCCATGATGGCCCTGGTTAACCTGTCTATGACTGTCTCTCCAGCTGGCCAGCCTGAG
AGTCTGAGCAGGGAAGAGGAGGTGGACTGCCTGGTGTGTCAGCTGCACCGGGTTGGGAGCAGCTGGAGA
AGATGAATGGGCAGCGCATGGATGAGCTCTTATCCTAATCCGGGATGGCTTCTGCTCCCATAGACCT
CAGCTCCCTGGCCGGTTGCTGCTGCTGGAGATCATTGAGTTCGGGCAGCTGGCTGGAAGACCACGCT
GCCGCTCATAAGTATTACTACAGTGAGGTGTCTGAC

ACGCGTACGCGGCCGCTCGAGCAGAACTCATCTCAGAAGAGGATCTGGCAGCAAATGATATCCTGGATT
ACAAGGATGACGACGATAAGGTTTAA



[View online »](#)

Protein Sequence: >RR206301 representing NM_001014122
 Red=Cloning site Green=Tags(s)

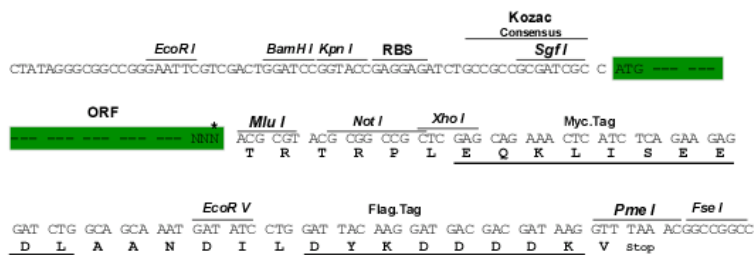
MGEASRDEYKIQSFDAETQQLLKTALKDPGAVDLERVANVIVDHSLQDCVFSKEAGRMCYAIQAESKQA
 GQSVFRRGLLNRLQKEYDAREQLRACSLQGWVCYVTFICNIFDYLRVNNMPMMALVNPVYDCLFQLAQPE
 SLSREEEVDCLVLQLHRVGEQLEKMNGQRMDLFLIRLDGFLPIDLSSLARLLLLLEIEIFRAAGWKTP
 AAHKYYYSEVSD

TRTRPLEQKLISEEDLAANDILDYKDDDDKV

Restriction Sites: Sgfl-MluI

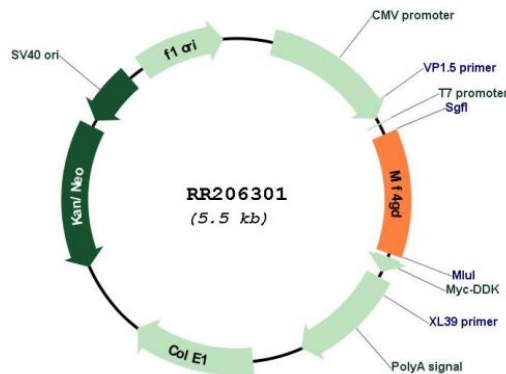
Cloning Scheme:

Cloning sites used for ORF Shuttling:



* The last codon before the Stop codon of the ORF

Plasmid Map:



ACCN: NM_001014122

ORF Size: 666 bp

OTI Disclaimer:	The molecular sequence of this clone aligns with the gene accession number as a point of reference only. However, individual transcript sequences of the same gene can differ through naturally occurring variations (e.g. polymorphisms), each with its own valid existence. This clone is substantially in agreement with the reference, but a complete review of all prevailing variants is recommended prior to use. More info
OTI Annotation:	This clone was engineered to express the complete ORF with an expression tag. Expression varies depending on the nature of the gene.
Components:	The ORF clone is ion-exchange column purified and shipped in a 2D barcoded Matrix tube containing 10ug of transfection-ready, dried plasmid DNA (reconstitute with 100 ul of water).
Reconstitution Method:	<ol style="list-style-type: none">1. Centrifuge at 5,000xg for 5min.2. Carefully open the tube and add 100ul of sterile water to dissolve the DNA.3. Close the tube and incubate for 10 minutes at room temperature.4. Briefly vortex the tube and then do a quick spin (less than 5000xg) to concentrate the liquid at the bottom.5. Store the suspended plasmid at -20°C. The DNA is stable for at least one year from date of shipping when stored at -20°C.
RefSeq:	NM_001014122.1 , NP_001014144.1
RefSeq Size:	1322 bp
RefSeq ORF:	669 bp
Locus ID:	360659
UniProt ID:	Q6AXU7
Cytogenetics:	10q32.1
MW:	25.5 kDa
Gene Summary:	Functions in replication-dependent translation of histone mRNAs which differ from other eukaryotic mRNAs in that they do not end with a poly-A tail but a stem-loop. May participate in circularizing those mRNAs specifically enhancing their translation (By similarity). [UniProtKB/Swiss-Prot Function]