

## Product datasheet for **RR206241**

### Mtf2 (NM\_001100898) Rat Tagged ORF Clone

#### Product data:

Product Type:	Expression Plasmids
Product Name:	Mtf2 (NM_001100898) Rat Tagged ORF Clone
Tag:	Myc-DDK
Symbol:	Mtf2
Synonyms:	RGD1304727
Vector:	pCMV6-Entry (PS100001)
E. coli Selection:	Kanamycin (25 ug/mL)
Cell Selection:	Neomycin



[View online »](#)

**ORF Nucleotide Sequence:**

>RR206241 representing NM\_001100898  
 Red=Cloning site Blue=ORF Green=Tags(s)

TTTTGTAATACGACTCACTATAGGGCGGCCGGAATTCGTCGACTGGATCCGGTACCGAGGAGATCTGCC  
 GCC**CGGATCGCC**

ATGAGAGACTCTACAGGAGCAGTAATTCCTGCTCCACAAGCGGTCTCCTTACGTCGAAACCAAAGA  
 CCTCAGCATCCTTGAACAAGCTGTCTTTACAGGATGGACATAAAGCCAAAAACCAGCATGTAAATTTGA  
 AGAGGGTCAAGATGTCTTAGCTAGATGGTCAGATGGCTTGTCTTTATCTTGAAGTATCAAAAAGATAAAC  
 ATTTTGAACAGAGCTGCTTCATCACATTTGAGGACAGTTCTAAGTCTGGGTTCTCTGGAAGGACATCC  
 AAACAGGAGCCACTGGGAGTGGGAAAATGGTCTGTACAATATGTCAAGAAGAGTATTGAGAAGCACCTAA  
 TGAAATGGTTATCTGTGATAAGTGGTCAAGGATATCATCAGCTGTGCATACGCTCATATTGACTCG  
 AGTGTGATCGATTAGATGAAAAGTGGCTTTGTCGACAGTGGTCTTTCGCAACAACAACAAGAGGGGTG  
 GTGCACCTAAGAAAGGACCAATGCCAAAGCACTGCAAGTATGAAGCAGACATTACCCTATAGCGTGGC  
 TGACCTTGAATGGGATGCAGGTCAAAAACCAACGTTGAGCAGTGTACTGCTACTGTGGAGGCCCTGGA  
 GACTGGTATTTAAAGATGCTGCAGTGTGCAAAATGTAAGCAGTGGTTTCATGAGGCTTGTGTCCAATGCC  
 TTCAAAAGCCAATGCTGTTTGGAGATAGGTTTTATACATTTATTTGCTCTGTCTGCAAGTCTGGACCAGA  
 ATACCTCAAACGCTACCATACAGTGGGTAGATATAGCACACCTATGCCTTTACAACCTAAGTGTATT  
 CACAAGAAGAAGTACTTTGACTCTGAACTTGGCTTATGACATACATTAATGACAAGTGGGACAGATTGC  
 ACCCTGGAGAGCTGGCAGACACGCCAAATCTGAAAGATATGAGCATGTTCTGGAGGCATTAATGATTA  
 CAAGACCATGTTATGTCTGGGAAAGAAATAAAGAAGAAGAAGCATTGTTTGGGTTGCGAATTCGTT  
 CCTCTGTGCCACCAATGTGGCTTTCAAAGCAGAGAAAGAACCTGAAGGAACATCCCATGAATTTAAAA  
 TTAAGGCAGAAAGGCATCCAAACCTACATCTGACTCCAGGGAAGTAAGCAATGGGATGAAAAAAAAGG  
 AAAGAAAAAATCTGTAGTCTGCTCCTCGCCATATACAAGAAAAATGATTGAAAAAATGCTGAGCCG  
 CCTTTGGGTAAGGAATCAGTTTCAAGAAATCCTGCGTTGGATTTACCTTGTCTATAGGGAGAAGTGGG  
 GAGTTGCACATTCATCCAATACCTCAGATGTGGACCTCACGGGTGCTTCCAGTGCAAAAGAACTACCTC  
 GTCTAGCATTCCAGGCATTATGGGTTATCTGACTCTAGAAAAAGAACTCGCACGGGAAGATCGTGGCCT  
 GCTTCAATACCACATTTGCGGAGAAGAAGAGTGCCTTCCACGAAGAGCACTCCATACTCAGAAGTACG  
 AAGTTGTAAGATGATGAAGGCAAGAAGATTACCAGTTTGAAGAACTTAACACAGAAATCCTGAATAA  
 CTTAGCAGATCAGGAGTTACAGTCAATCACCTGAAAACTCCATCACTAGTATTTTGGTCCCGCAGT  
 AGAATAGCATGTGGAGAGAAATACCGGGTCTGGCTCGCCGCGTGACGCTGGATGAAAGGTGCAGTATC  
 TCGTGGAGTGGGAAGGAGCGACTGCATCC

**ACGCGT**ACGCGGCCGCTCGAGCAGAACTCATCTCAGAAGAGGATCTGGCAGCAAATGATATCCTGGATT  
 ACAAGGATGACGACGATAAGGTTTAA

**Protein Sequence:**

>RR206241 representing NM\_001100898  
 Red=Cloning site Green=Tags(s)

MRDSTGAGNSLVHKRSPSRNQKTSASLNKLSLQDGHKAKKPACKFEEGQDVLARWSDGLFYLGTIKKIN  
 ILKQSCFITFEDSSKSWLWKDIQTGATGSGEMVCTICQEEYSEAPNEMVICDKCGQYHQLCHTPHIDS  
 SVIDSDEKWLCRQCVFATTTKRGALKKGNKALQVMKQTL PYSVADLEWDAGHKTINVQQCYCYGGPG  
 DWYKMLQCCCKQWFHEACVQCLQKPMFLGDRFYTFICSVCSGPEYLRPLQWVDIAHLCLYNLSVI  
 HKKKYFDSELEMTYINDNWDRLHPGELADTPKSERYEHVLEALNDYKTMFMSGKEIKKKKHLFGLRIRV  
 PPVPPNVAFAEKEPEGTSHEFKIKGRKASKPTS SDSREVSNGIEKKGKSVGRPPGYPYTRKMIQKTAEP  
 PLGKESVSENPA DLPCSIGRTEGVAHSSNTSDVLTGASSAKETTSSSIPRHYGLSDSRKRTTRGRSWP  
 ASIPHLRRRRGR LPRRALHTQNSEVVKDDEGKEDYQFEELNTEILNNLADQELQLNHLKNSITSYFGAAG  
 RIACGEKYRVLARRVTLDGKVQYLVEWEGATAS

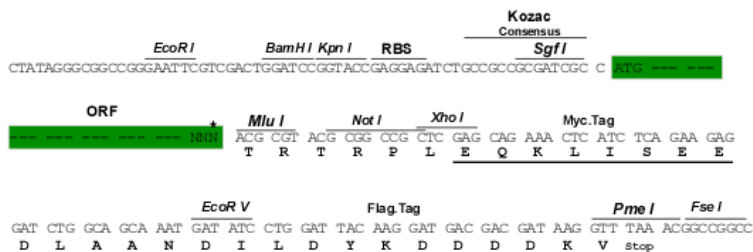
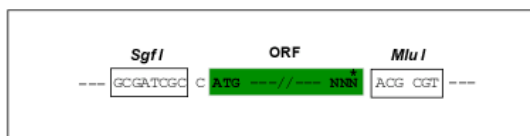
**TRTRPLEQKLI**SEEDLAANDILDYKDDDDKV

**Restriction Sites:**

SgfI-MluI

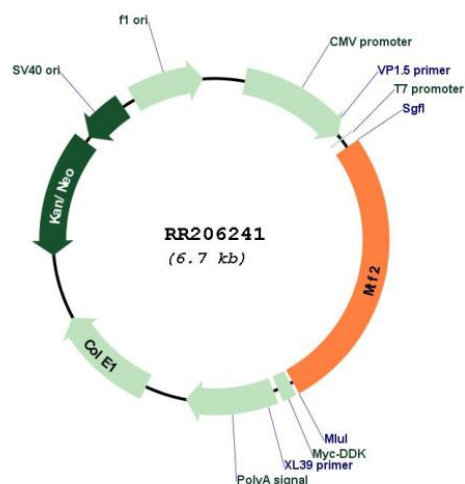
Cloning Scheme:

Cloning sites used for ORF Shuttling:



\* The last codon before the Stop codon of the ORF

Plasmid Map:



ACCN: NM\_001100898

ORF Size: 1779 bp

<b>OTI Disclaimer:</b>	The molecular sequence of this clone aligns with the gene accession number as a point of reference only. However, individual transcript sequences of the same gene can differ through naturally occurring variations (e.g. polymorphisms), each with its own valid existence. This clone is substantially in agreement with the reference, but a complete review of all prevailing variants is recommended prior to use. <a href="#">More info</a>
<b>OTI Annotation:</b>	This clone was engineered to express the complete ORF with an expression tag. Expression varies depending on the nature of the gene.
<b>Components:</b>	The ORF clone is ion-exchange column purified and shipped in a 2D barcoded Matrix tube containing 10ug of transfection-ready, dried plasmid DNA (reconstitute with 100 ul of water).
<b>Reconstitution Method:</b>	<ol style="list-style-type: none"> <li>1. Centrifuge at 5,000xg for 5min.</li> <li>2. Carefully open the tube and add 100ul of sterile water to dissolve the DNA.</li> <li>3. Close the tube and incubate for 10 minutes at room temperature.</li> <li>4. Briefly vortex the tube and then do a quick spin (less than 5000xg) to concentrate the liquid at the bottom.</li> <li>5. Store the suspended plasmid at -20°C. The DNA is stable for at least one year from date of shipping when stored at -20°C.</li> </ol>
<b>RefSeq:</b>	<a href="#">NM_001100898.1</a> , <a href="#">NP_001094368.1</a>
<b>RefSeq Size:</b>	2575 bp
<b>RefSeq ORF:</b>	1782 bp
<b>Locus ID:</b>	360905
<b>Cytogenetics:</b>	14p22
<b>MW:</b>	66.9 kDa