

## Product datasheet for **RR206221**

### Igsf11 (NM\_001013120) Rat Tagged ORF Clone

#### Product data:

**Product Type:** Expression Plasmids  
**Product Name:** Igsf11 (NM\_001013120) Rat Tagged ORF Clone  
**Tag:** Myc-DDK  
**Symbol:** Igsf11  
**Synonyms:** MGC94879  
**Vector:** pCMV6-Entry (PS100001)  
**E. coli Selection:** Kanamycin (25 ug/mL)  
**Cell Selection:** Neomycin  
**ORF Nucleotide Sequence:** >RR206221 representing NM\_001013120  
Red=Cloning site Blue=ORF Green=Tags(s)

TTTTGTAATACGACTCACTATAGGGCGGCCGGAATTCGTCGACTGGATCCGGTACCGAGGAGATCTGCC  
GCC**CGGATCGCC**

ATGACTCGGGCGGCTCCGCTCTGGCGTCTGGCTGCTCTTGTCGCTGCTCGGTGTGGCAGCATCTCTGG  
AAGTGTCGAGAGCCAGGCAGTGTCCAGGTGGCTCGGGTCCAGACAGCAGTCTGCCCTCGCCTTCTC  
CACCAGTGTCTCTCCTGAACCTCAATGTCATTTGGATGGTTCATCCCTCTCCAATGCAAACAGCCC  
GAACAGGTCATTCTATCAGGGCGACAGATGTTTGGATGGTCCCGTTCCATGGGAGGGTAGGAT  
TTACAGGCACCATGCCTGCTACCAATGTCTCCATCTTCATCAATAACACACAGCTGTCAGATACGGGCAC  
CTACCAGTGCTTGGTGAATAACCTTCCAGACAGAGGGGGCAGAAACATTGGGGTCACTGGCCTCACGGTG  
TTAGTCCCCCTTCTGCTCCAACTGCCAAATCCAAGGATCTCAGGACATCGGCAGTGACGTCATCCTTC  
TGTGTAGTTCGGAGGAAGGCATCCCTCGGCCACTTACCTTTGGGAGAAGTTAGATAATACACTCAAGCT  
ACCTCCAACAGCCACTCAGGACCAGGTCAGGGGACAGTCACCATCCGGAATATTAGTGCCTCTCTTCC  
GGTCTTTACCAGTGTGTGGCTTCCAACGCCATCGGGACCAGCACCTGTCTCCTGGATCTCCAGGTTATCT  
CGCCCCAGCCCCGGAGCGTTGGAGTGATAGCCGGAGCTGTTGGCACTGGTGTCTCTCATCGTCATCTG  
CCTTGCACTAACTTCAAGGGCATTCTTTTACTGGAGAAGCAAAAATAAAGAGGAGGAGGAGGAAATT  
CCTAATGAAATCAGAGAGGATGATCTTCCACCTAAATGCTCTTCTGCCAAAGCATTCCACACAGAGATAT  
CCTCCTCAGAAAAAACACATTGACCTCTTCTAATACTACAACAGTCGATACTGGAACAACAATCCCAA  
ACCCCATAAAAACACAGAGTCGTTCAACCACTTCACTGACTTACGCCAGTCTTTCTGGCAATGCTGTT  
ATCCCGTCCATCTATGCAAATGGAACCATCTGGTTTTGGGTCCACATAAGACTCTGGTAGTTACAGCCA  
ACAGAGGGTCATCGCCCCAGGTCATGCCAGGAACAATGGTTCAGTCAGCAGGAAGCCTTGGTCTCAACA  
CACACATTCTACTGTAAGCCAAATGACCCTGGAGCGAATCGGTGCAGTGCCTGTCTGGTCCCGCC  
CAGAGTCGGGCGGGTCCCTGGTA

**ACGCGT**ACGCGGCCGCTCGAGCAGAACTCATCTCAGAAGAGGATCTGGCAGCAAATGATATCCTGGATT  
ACAAGGATGACGACGATAAGGTTTAA



Protein Sequence: >RR206221 representing NM\_001013120  
 Red=Cloning site Green=Tags(s)

MTRRRSALASWLLL SLLGVAASLEVSESPGVSQVARGQTAVLPCAFSTSAALLNLNVIWMVIPLSNANQP  
 EQVILYQGGQMF DGALRFHGRVGF GTMPATNVSIFINNTQLSDTGT YQCLVNNLPDRGGRNIGVTGLTV  
 LVPPSAPNCQIQGSQDIGSDVILLCSSEEGIPRPTYLWEKLDNTLKLPPATATQDQVQGTVTIRNISALSS  
 GLYQCVASNAIGTSTCLLDLQVISPQPRSVGVIAGAVGTGAVLIVICLALTS GAFFYWRSKNKEEEEEIEI  
 PNEIREDDLPPKCSSAKAFHTEISSSENNTLTSSNTYNSRYWNNNPKPHKNTESFNHFSDLRQSFSGNAV  
 IPSIYANGNHLVLGPHKTLVVTANRGSSPQVMPRNNGSVSRKPWSQHHTHSYTVSQMTLERIGAVPVMVPA  
 QSRAGSLV

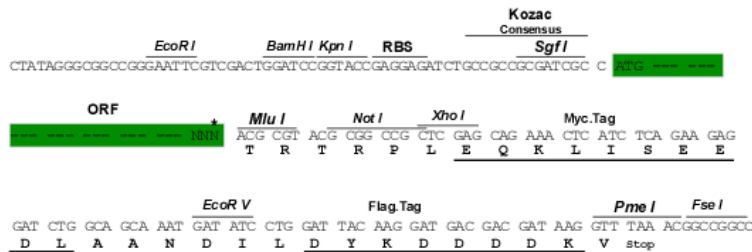
TRTRPLEQKLISEEDLAANDILDYKDDDDKV

Restriction Sites:

SgfI-MluI

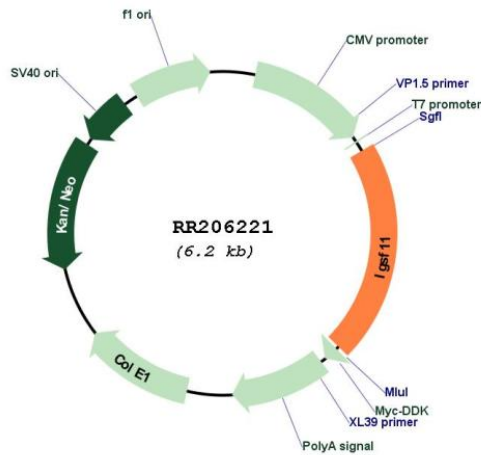
Cloning Scheme:

Cloning sites used for ORF Shuttling:



\* The last codon before the Stop codon of the ORF

Plasmid Map:



ACCN:

NM\_001013120

<b>ORF Size:</b>	1284 bp
<b>OTI Disclaimer:</b>	The molecular sequence of this clone aligns with the gene accession number as a point of reference only. However, individual transcript sequences of the same gene can differ through naturally occurring variations (e.g. polymorphisms), each with its own valid existence. This clone is substantially in agreement with the reference, but a complete review of all prevailing variants is recommended prior to use. <a href="#">More info</a>
<b>OTI Annotation:</b>	This clone was engineered to express the complete ORF with an expression tag. Expression varies depending on the nature of the gene.
<b>Components:</b>	The ORF clone is ion-exchange column purified and shipped in a 2D barcoded Matrix tube containing 10ug of transfection-ready, dried plasmid DNA (reconstitute with 100 ul of water).
<b>Reconstitution Method:</b>	<ol style="list-style-type: none"><li>1. Centrifuge at 5,000xg for 5min.</li><li>2. Carefully open the tube and add 100ul of sterile water to dissolve the DNA.</li><li>3. Close the tube and incubate for 10 minutes at room temperature.</li><li>4. Briefly vortex the tube and then do a quick spin (less than 5000xg) to concentrate the liquid at the bottom.</li><li>5. Store the suspended plasmid at -20°C. The DNA is stable for at least one year from date of shipping when stored at -20°C.</li></ol>
<b>RefSeq:</b>	<a href="#">NM_001013120.1</a> , <a href="#">NP_001013138.1</a>
<b>RefSeq Size:</b>	3675 bp
<b>RefSeq ORF:</b>	1287 bp
<b>Locus ID:</b>	303926
<b>UniProt ID:</b>	<a href="#">Q5U2P2</a>
<b>Cytogenetics:</b>	11q21
<b>MW:</b>	46 kDa
<b>Gene Summary:</b>	Functions as a cell adhesion molecule through homophilic interaction. Stimulates cell growth (By similarity).[UniProtKB/Swiss-Prot Function]