

Product datasheet for **RR206193**

Ppic (NM_001004215) Rat Tagged ORF Clone

Product data:

Product Type: Expression Plasmids
Product Name: Ppic (NM_001004215) Rat Tagged ORF Clone
Tag: Myc-DDK
Symbol: Ppic
Synonyms: MGC93799
Vector: pCMV6-Entry (PS100001)
E. coli Selection: Kanamycin (25 ug/mL)
Cell Selection: Neomycin
ORF Nucleotide Sequence: >RR206193 representing NM_001004215
Red=Cloning site Blue=ORF Green=Tags(s)

TTTTGTAATACGACTCACTATAGGGCGGCCGGAATTCGTCGACTGGATCCGGTACCGAGGAGATCTGCC
GCC**CGATCGCC**

ATGAGCCGGGTCCTCGTCTGCTGCTGCCCGGGTCTTCTGGGGCTTGGAGCCTCGTGTCTTCTT
CGGGGTCATCGGGCGTCCGAAAGCGAGGTCCCTTGGTGACGGACAAGGTCTTCTTTGATGTGAGGATCGG
AGACAAAGATGTGGGTAGAATTGTGATTGGCCTCTTTGAAAAGTTGTACCCCGGACGGTAGAAACTTC
GTGACTCTGGCAACAGGAGAGAAAGGCTACGGGTACAAGGAAGCATATCCACCGTGTCATCAAGGACT
TCATGATTCAAGGAGGGGACTTCACGGCTAGAGACGGCACTGGAGGTATGAGCATTATGGTGAGACATT
TCCTGATGAGAACTTCAAACGAAACACTATGGCATTGGGTGGGTGAGCATGGCCAAATGCTGGACCAGAC
ACCAATGGTTCCAATTCTTCATCACCTTGACCAAGCCCGCTGGCTGGATGGCAAACATGTGGTATTTG
GAAAAGTTCTGGATGGGATGACTGTGGTACATTCATAGAAGTTCAAGCAACGGATGACCATGACCGCCC
ACTTACCGACTGCACCATTGTCAACAGCGGCAAGATAGATGTGAAAACACCCTTTGTGGTTGAGGTCCCT
GACTGG

ACGCGTACGCGGCCGCTCGAGCAGAAACTCATCTCAGAAGAGGATCTGGCAGCAAATGATATCCTGGATT
ACAAGGATGACGACGATAAGGTTTAA



[View online »](#)

Protein Sequence: >RR206193 representing NM_001004215
 Red=Cloning site Green=Tags(s)

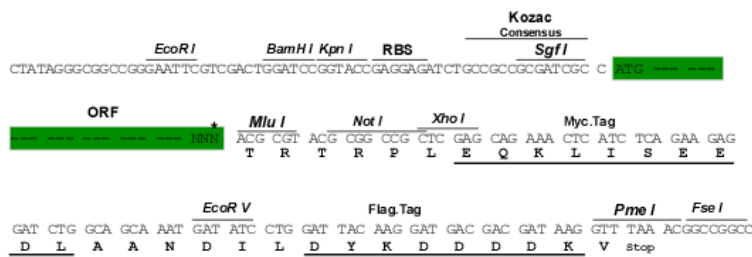
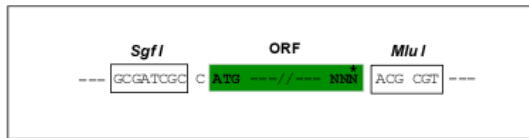
MSRGPRLLLPAVLFLGLGGLVSSSGSSGVRKRGLVTDKVFVFDVRIQDKDVGRIVIGLFGKVVPRTVENF
 VTLATGEKGYGYKGSIFHRVIKDFMIQGGDFTARDGTGMSIYGETFPDENFKLKHYGIGWVSMANAGPD
 TNGSQFFITLTKPAWLDGKHVVFQKVLDMGTVVHSIELQATDDHDRPLTDCTIVNSGKIDVKTPFVVEVP
 DW

TRTRPLEQKLISEEDLAANDILDYKDDDDKV

Restriction Sites: Sgfl-MluI

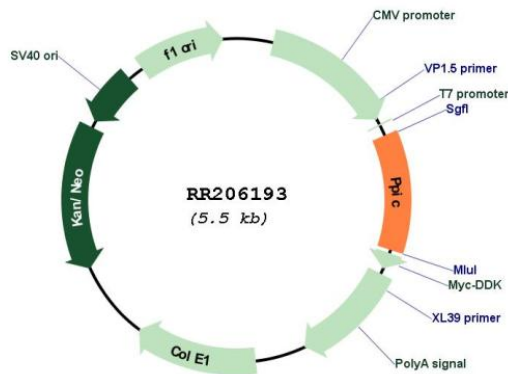
Cloning Scheme:

Cloning sites used for ORF Shuttling:



* The last codon before the Stop codon of the ORF

Plasmid Map:



ACCN: NM_001004215

ORF Size: 636 bp

OTI Disclaimer:	The molecular sequence of this clone aligns with the gene accession number as a point of reference only. However, individual transcript sequences of the same gene can differ through naturally occurring variations (e.g. polymorphisms), each with its own valid existence. This clone is substantially in agreement with the reference, but a complete review of all prevailing variants is recommended prior to use. More info
OTI Annotation:	This clone was engineered to express the complete ORF with an expression tag. Expression varies depending on the nature of the gene.
Components:	The ORF clone is ion-exchange column purified and shipped in a 2D barcoded Matrix tube containing 10ug of transfection-ready, dried plasmid DNA (reconstitute with 100 ul of water).
Reconstitution Method:	<ol style="list-style-type: none">1. Centrifuge at 5,000xg for 5min.2. Carefully open the tube and add 100ul of sterile water to dissolve the DNA.3. Close the tube and incubate for 10 minutes at room temperature.4. Briefly vortex the tube and then do a quick spin (less than 5000xg) to concentrate the liquid at the bottom.5. Store the suspended plasmid at -20°C. The DNA is stable for at least one year from date of shipping when stored at -20°C.
RefSeq:	NM_001004215.1 , NP_001004215.1
RefSeq Size:	1380 bp
RefSeq ORF:	639 bp
Locus ID:	291463
Cytogenetics:	18q11
MW:	23 kDa