

## Product datasheet for **RR206127**

### Mtpap (NM\_001107359) Rat Tagged ORF Clone

#### Product data:

Product Type:	Expression Plasmids
Product Name:	Mtpap (NM_001107359) Rat Tagged ORF Clone
Tag:	Myc-DDK
Symbol:	Mtpap
Synonyms:	Papd1
Mammalian Cell Selection:	Neomycin
Vector:	pCMV6-Entry (PS100001)
E. coli Selection:	Kanamycin (25 ug/mL)
ORF Nucleotide Sequence:	>RR206127 representing NM_001107359 Red=Cloning site Blue=ORF Green=Tags(s)

TTTTGTAATACGACTCACTATAGGGCGCCGGGAATTCGTCGACTGGATCCGGTACCGAGGAGATCTGCC  
GCC**CGGATCGCC**

ATGTTTTTAGATTTAGACGAAACTGAAATCTCAGTGATCACAAGAATACAGGGAATTTTTAATGGAAT  
TTCAAGTGAAAAACGTTCCCTCTGAAAGGGTTGCGACCCAGAAGATCTTATCTGTAATAGGAGAGTGCC  
TGACAATTTGGCCCTGGCTGTGTGGGTGTTGAGAAGATACTCAATGCTCGCTGCCACTGGTGAGATTC  
TCCCATCAGGGCTCTGGATTCCAGTGTGACCTGACTGCCAACAATAGTATTGCTTTGAAAAGTCCGAGC  
TCCTTTATATATATGGCTCCCTGGATTCAAGAGTAAGAGCTTTGGTGTTCCGGTGTGCGATGCTGGGCTCG  
GGCACATTCGTTAAACAAGCAGTATTCTGGTGCTTGATTACAAACTTCTCCCTAACAATGATGGTCATC  
TTTTCTCCAGAGAAGATCACCCCATCTCCCAACTCTGGATTCTCTAAAGTCCATGGCAGATGCTG  
AAGACAGATGTATTCTAGAGGGAACAATTGTACATTCATCCAGGACATAAATAAAATCAAACCTTCTGG  
AAACACAGAAACTAGAACTACTAAAGGAATTTTTGAGTATTTGGCAATTTTGCTTTCAATAAG  
AATTCATAAACATCCGACAGGGAAGGGAGCAAAACAAGCCTGATTCTTCTCCTGTACATCCAGAATC  
CTTTTGAACATCTCTTAACATAAGCAAAAATGTGAGTCAGAACCAGCTACAAAAATTTGTGAATTGGC  
CAGAGACAGTGCCTGGATTTTGGAACAGGAAAAAAGGATCAGCCTTCTCCAGTAGCCATCCCTGGGG  
CTGGCTGCCCTCTGCTGCCTCTGGGGCAGGCCAGACATCTCTCTCGGAAAAAGAAGAAAAAGCCGA  
TGAGTGAAAAAGTCAAAGGCTTGTAGCATCCATAAAAAGTAACAGCCCTGACCCTTCTACAGATGCCAG  
TGGAAAGAGAGCCGTCAGTACACAGGCG

**ACGCGT**ACGCGGCCGCTCGAGCAGAAACTCATCTCAGAAGAGGATCTGGCAGCAATGATATCCTGGATT  
ACAAGGATGACGACGATAAGGTTTAA



[View online »](#)

**Protein Sequence:** >RR206127 representing NM\_001107359  
 Red=Cloning site Green=Tags(s)

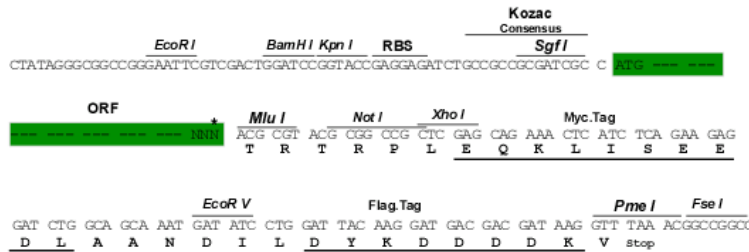
MFLDLDETG NLS DHKNTGNFLMEFQVKNVPSERVATQKILSVIGECLDNFGPGCVGVQKILNARCPLVRF  
 SHQGS GFQCDL TANN SIALK SSELL YIYGSL DSRVRAL VFGVRCWARAHS L TSSIPGAWITN FSL TMMVI  
 FFLQRRS PPI LPTLDSL KSMADAEDRC ILEGN NCTFIQDINKIKP SGN TETLE LLLKEFFEYFGNF AFNK  
 NSINIRQ GREQNK PDSSPLYIQNPFETSLNISK NVSQNLQKFV ELARDSAWILEQEKKDQPSSSSH PWG  
 LAALLLP GAGQTS LSRKKKKKPMSEKVKGLLASIKSNSPDRST DASGKRAVSTQA

TRTRPLEQKLISEEDLAANDILDYKDDDDKV

**Restriction Sites:** SgfI-MluI

**Cloning Scheme:**

Cloning sites used for ORF Shuttling:



\* The last codon before the Stop codon of the ORF

**ACCN:** NM\_001107359

**ORF Size:** 1008 bp

**OTI Disclaimer:** The molecular sequence of this clone aligns with the gene accession number as a point of reference only. However, individual transcript sequences of the same gene can differ through naturally occurring variations (e.g. polymorphisms), each with its own valid existence. This clone is substantially in agreement with the reference, but a complete review of all prevailing variants is recommended prior to use. [More info](#)

**OTI Annotation:** This clone was engineered to express the complete ORF with an expression tag. Expression varies depending on the nature of the gene.

**Components:** The ORF clone is ion-exchange column purified and shipped in a 2D barcoded Matrix tube containing 10ug of transfection-ready, dried plasmid DNA (reconstitute with 100 ul of water).

**Reconstitution Method:**

1. Centrifuge at 5,000xg for 5min.
2. Carefully open the tube and add 100ul of sterile water to dissolve the DNA.
3. Close the tube and incubate for 10 minutes at room temperature.
4. Briefly vortex the tube and then do a quick spin (less than 5000xg) to concentrate the liquid at the bottom.
5. Store the suspended plasmid at -20°C. The DNA is stable for at least one year from date of shipping when stored at -20°C.

**RefSeq:** [NM\\_001107359.1](#), [NP\\_001100829.1](#)

**RefSeq Size:** 2680 bp

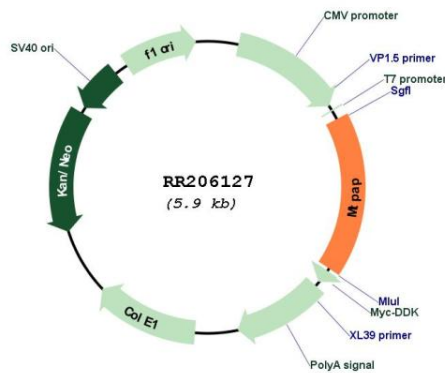
**RefSeq ORF:** 1011 bp

**Locus ID:** 307050

**Cytogenetics:** 17q12.1

**MW:** 37.3 kDa

**Product images:**



Circular map for RR206127