

Product datasheet for **RR206122**

C1qc (NM_001008524) Rat Tagged ORF Clone

Product data:

Product Type: Expression Plasmids
Product Name: C1qc (NM_001008524) Rat Tagged ORF Clone
Tag: Myc-DDK
Symbol: C1qc
Synonyms: C1qg
Mammalian Cell Selection: Neomycin
Vector: pCMV6-Entry (PS100001)
E. coli Selection: Kanamycin (25 ug/mL)
ORF Nucleotide Sequence: >RR206122 representing NM_001008524
Red=Cloning site Blue=ORF Green=Tags(s)

TTTTGTAATACGACTCACTATAGGGCGCCGGGAATTCGTCGACTGGATCCGGTACCGAGGAGATCTGCC
GCC**CGATCGCC**

ATGGTTGTAGGAACCAGCTGCCAGCCCCAGCATGGACTCTACCTGCTGCTGCTCCTTCTGGCCCTACCCC
TCAGGAGCCAGGCCAACGCTGGCTGCTATGGGATCCCAGGGATGCCAGGCCTGCCGGGAACCCCTGGGAA
GGATGGGCATGATGGACTTCAGGGGCCAAGGGTGAAGCCGGGAATCCCAGCCATCCCTGGACACAAGGA
CCCAAGGGT CAGAAGGGCGAGCCGGGTATGCCTGGCCATCGTGGGAAAAACGGCCCCATGGGACCTCTG
GGTCGCCAGGGGATCCAGGCCCCAGGGTCTCCCGGGAGCCGGGTGAGGAGGGTCGATACAAACAGAA
GCATCAGTCGGTGTTCACGGTCACCCGGCAGACCGCGCAGTACCCAGCGCCAATGGCCTTGTCAAGTTC
AATTCCGCCATCACCAATCCTCAGGGGGATTACAACACAAACACGGGGAAGTTCACCTGCAAAGTCCCCG
GCCTCTACTACTTCGTCCACCACACATCCCAGACGGCCAACTGTGCGTGCAGCTGCTCCTCAACAATGC
CAAGGTGACCAGCTTCTGCGACCACATGTCCAACAGCAAGCAGGTGAGCTCAGGAGGAGTACTCCTGCGG
CTGCAGAGGGGCGACGAGGTGTGGCTGGCCGTCAACGACTACAACGGCATGGTGGGCACTGAGGGCTCTG
ACAGCGTCTTCTGTTTCTACTGTTTCTGAC

ACGCGTACGCGGCCGCTCGAGCAGAACTCATCTCAGAAGAGGATCTGGCAGCAAATGATATCCTGGATT
ACAAGGATGACGACGATAAGGTTTAA



[View online »](#)

Protein Sequence: >RR206122 representing NM_001008524
Red=Cloning site Green=Tags(s)

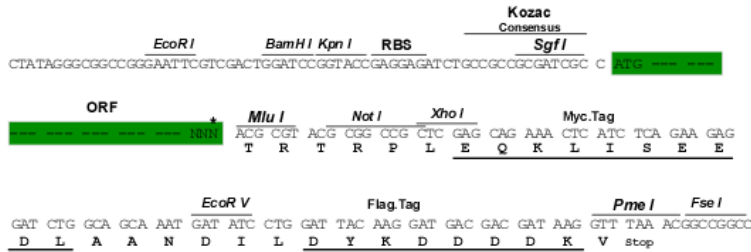
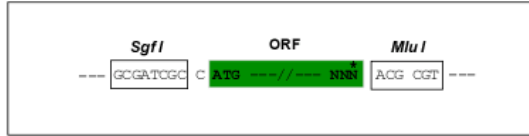
```
MVVGTSQCQPQHGLYLLLLLLALPLRSQANAGCYGIPGMPGLPGTPGKDGHDGLQGPKGEPGIPAIPGTQG
PKGQKGEPMGPHRGKNGPMGTSGSPGDPGPRGPPGEPGEEGRYKQKHQSFTVTRQTAQYPAANGLVKF
NSAITNPQGDYNTNTGKFTCKVPGLYYFVHHTSQTANLCVQLLLNNAKVTSFCDHMSNSKQVSSGGVLLR
LQRGDEVWLA VNDYNGMVGTEGSDSVFSGFLFPD
```

TRTRPLEQKLISEEDLAANDILDYKDDDDKV

Restriction Sites: SgfI-MluI

Cloning Scheme:

Cloning sites used for ORF Shuttling:



* The last codon before the Stop codon of the ORF

ACCN: NM_001008524

ORF Size: 735 bp

OTI Disclaimer: The molecular sequence of this clone aligns with the gene accession number as a point of reference only. However, individual transcript sequences of the same gene can differ through naturally occurring variations (e.g. polymorphisms), each with its own valid existence. This clone is substantially in agreement with the reference, but a complete review of all prevailing variants is recommended prior to use. [More info](#)

OTI Annotation: This clone was engineered to express the complete ORF with an expression tag. Expression varies depending on the nature of the gene.

Components: The ORF clone is ion-exchange column purified and shipped in a 2D barcoded Matrix tube containing 10ug of transfection-ready, dried plasmid DNA (reconstitute with 100 ul of water).

Reconstitution Method:

1. Centrifuge at 5,000xg for 5min.
2. Carefully open the tube and add 100ul of sterile water to dissolve the DNA.
3. Close the tube and incubate for 10 minutes at room temperature.
4. Briefly vortex the tube and then do a quick spin (less than 5000xg) to concentrate the liquid at the bottom.
5. Store the suspended plasmid at -20°C. The DNA is stable for at least one year from date of shipping when stored at -20°C.

RefSeq: [NM_001008524.1](#), [NP_001008524.1](#)

RefSeq Size: 1060 bp

RefSeq ORF: 738 bp

Locus ID: 362634

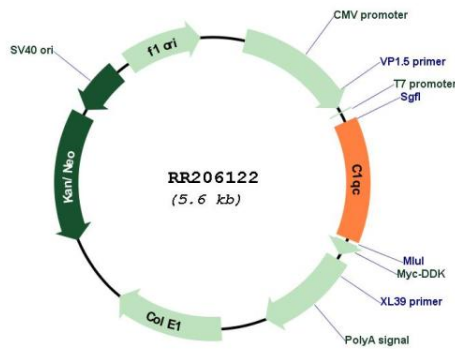
UniProt ID: [P31722](#)

Cytogenetics: 5q36

MW: 25.7 kDa

Gene Summary: C1q associates with the proenzymes C1r and C1s to yield C1, the first component of the serum complement system. The collagen-like regions of C1q interact with the Ca(2+)-dependent C1r(2)C1s(2) proenzyme complex, and efficient activation of C1 takes place on interaction of the globular heads of C1q with the Fc regions of IgG or IgM antibody present in immune complexes.[UniProtKB/Swiss-Prot Function]

Product images:



Circular map for RR206122