

Product datasheet for **RR206076**

Tcn2 (NM_022534) Rat Tagged ORF Clone

Product data:

Product Type: Expression Plasmids
 Product Name: Tcn2 (NM_022534) Rat Tagged ORF Clone
 Tag: Myc-DDK
 Symbol: Tcn2
 Synonyms: Tc2; Tcn2p
 Vector: pCMV6-Entry (PS100001)
 E. coli Selection: Kanamycin (25 ug/mL)
 Cell Selection: Neomycin
 ORF Nucleotide Sequence: >RR206076 representing NM_022534
 Red=Cloning site Blue=ORF Green=Tags(s)

TTTTGTAATACGACTCACTATAGGGCGCCGGAATTCGTCGACTGGATCCGGTACCGAGGAGATCTGCC
 GCC**CGATCGCC**

ATGGAGCTCTGAAGGCGCTGCTACTCCTGTCTGGAGTCTCGGGCTCTTGCTGAATTCTGTGAATAC
 CAAAGATGGACGGCCAGCTGGTAGAGAAGCTGGCCAGCGTCTTACCTTGGATGGATCGGCTTTCCTC
 AGAGCAGTTGAACCCAGCATCTACGTCGGCTCGGGCTTCCAGCATGCAGGCTGGGACCAAGGAGAAC
 CTCTACCTTCAACCTCAAACCTCCATTACCAGCAGTGCCTCCTGCGGTCCACCTCGAGTGATGATAACA
 GTGGTTGCCAGACTAAGATTTCTGGGGGACGTTGGCCCTCTACCTGCTTCTCAGGGCAACTGTGA
 GCTCCTGGGGAGCCGAAAGGGTACAGGATGGTCTCACAGCTCAAGTGGTCTTGAGGATGAGAAGAAG
 GCCATTGGGCACCATCATGAAGGCCACCCACACCAGCTATTACCAGTATGGCCTCAGTATCCTGGCCC
 TGTGCGTCCACCGAAGCGGGTCCATGACAGTGTGGTGGCAAGCTCCTGTATGCTGTTGAACATGACTA
 CTTTACCTACCAGGGCCACCTCTCTGTGGACACAGAAGCCATGGCCGGCTTGGCCTTACCTGTTGGAA
 CGATTCAATTTCAACTTGACCTGAGACCACGGATCACCACGGCCATCGAGACAGTGCAGAGAAGATCC
 TGAAGGCCACGGCCCTGAGGGTACTTTGAAATATCTATAGCACTCCGCTGGCACTACAGATGCTAAT
 GACCTCTCCTGGGTAGGGCTGGGCCAGCTTGCCTCAAGGCAAGGAAATCCCTGCTGCTCAGCCTACAG
 GATGGAGCCTTCCAGAATCCTATGATGATTTCCAGCTGCTACCCGTCCTGAACCAAGACCTACTTGA
 ATCTTATCTCCCCAGACTGCCAGGCACCCAGGGTATGTTGGTGGCCGCACTGAGGACCTGTCCACTT
 GTCAGAAGTCAGCGTCACGCTGAAGGTCTCCAGTGTCTTGCCACCATATGAACGAACAGTTTCCGCTTT
 GCTGGGGCTCCTTGAAGATGTCTGAAGAGGGCGGAGACCTTGAGAATTACAGTATGGGACCCAGG
 CCTCCTGTGACGGTCCCTACCTGACATCCGTAAGGAAAGAAGCTGGGGATCGAGAATACTGGCAGCT
 TCTCCGAGTCCCTGATACCCCTCTGCTACAAGGCATTGCTGACTACAAACCAAGAACGGGGAAACCATC
 GAATTGCGGCTAGTTAGATGG

ACGCGTACGCGGGCCGCTCGAGCAGAAACTCATCTCAGAAGAGGATCTGGCAGCAAATGATATCCTGGATT
 ACAAGGATGACGACGATAAGGTTTAA



[View online »](#)

Protein Sequence: >RR206076 representing NM_022534
 Red=Cloning site Green=Tags(s)

MELLKALLLLSGVLGALAEFCVIPKMDGQLVEKLGQRLLPMDRLSSEQLNPSIYVGLRLSSMQAGTKEN
 LYLNHLKLHYQQCLLRSTSSDDNSGCQTKISGGSLALYLLALRANCELLGSRKGD RMVSQ LKWFLEDEKK
 AIGHHHEGHPHTSYYYQYGLSILALCVHRKRVDHSDVVGKLLYAVEHDYFTYQGHLSVDTEAMAGLAFTCLE
 RFNFNSDLRPRIITTAIETVREKILKAQAPGYFGNIYSTPLALQMLMTSPGVGLGPACLKARKSLLL SLQ
 DGAFQNPMMISQLLPVLNHKTYLNLISPCQAPRVMLVPATEDPVHLSEVSVTLKVVSSVLPYERTVSVF
 AGASLEDVLRARDLGEFTYGTQASLSGPYLTVLKGKEAGDREYWQLLRVPDTPLLQGIADYKPKNGETI
 ELRLVRW

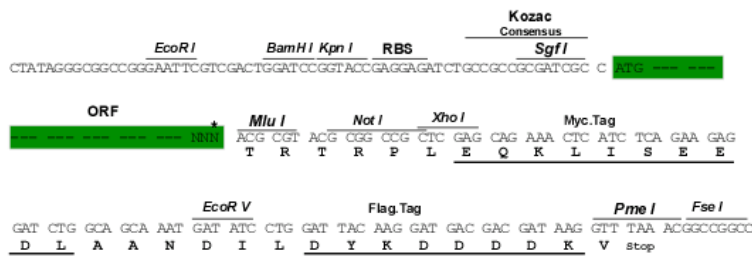
TRTRPLEQKLISEEDLAANDILDYKDDDDKV

Restriction Sites:

SgfI-MluI

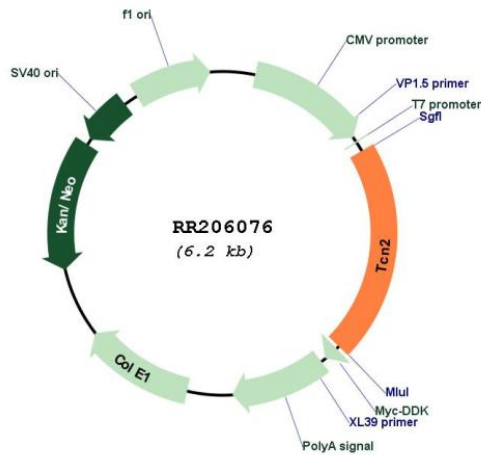
Cloning Scheme:

Cloning sites used for ORF Shuttling:



* The last codon before the Stop codon of the ORF

Plasmid Map:



ACCN:

NM_022534

ORF Size:	1281 bp
OTI Disclaimer:	The molecular sequence of this clone aligns with the gene accession number as a point of reference only. However, individual transcript sequences of the same gene can differ through naturally occurring variations (e.g. polymorphisms), each with its own valid existence. This clone is substantially in agreement with the reference, but a complete review of all prevailing variants is recommended prior to use. More info
OTI Annotation:	This clone was engineered to express the complete ORF with an expression tag. Expression varies depending on the nature of the gene.
Components:	The ORF clone is ion-exchange column purified and shipped in a 2D barcoded Matrix tube containing 10ug of transfection-ready, dried plasmid DNA (reconstitute with 100 ul of water).
Reconstitution Method:	<ol style="list-style-type: none">1. Centrifuge at 5,000xg for 5min.2. Carefully open the tube and add 100ul of sterile water to dissolve the DNA.3. Close the tube and incubate for 10 minutes at room temperature.4. Briefly vortex the tube and then do a quick spin (less than 5000xg) to concentrate the liquid at the bottom.5. Store the suspended plasmid at -20°C. The DNA is stable for at least one year from date of shipping when stored at -20°C.
RefSeq:	NM_022534.2 , NP_071979.2
RefSeq Size:	1962 bp
RefSeq ORF:	1284 bp
Locus ID:	64365
Cytogenetics:	14q21
MW:	47.5 kDa
Gene Summary:	component of plasma cobalamin (Cbl; vitamin B12) transport to all cells [RGD, Feb 2006]