

Product datasheet for **RR206069**

Shc2 (NM_001108065) Rat Tagged ORF Clone

Product data:

Product Type:	Expression Plasmids
Product Name:	Shc2 (NM_001108065) Rat Tagged ORF Clone
Tag:	Myc-DDK
Symbol:	Shc2
Vector:	pCMV6-Entry (PS100001)
E. coli Selection:	Kanamycin (25 ug/mL)
Cell Selection:	Neomycin



[View online »](#)

ORF Nucleotide Sequence:

>RR206069 representing NM_001108065
 Red=Cloning site Blue=ORF Green=Tags(s)

TTTTGTAATACGACTCACTATAGGGCGGCCGGGAATTCGTCGACTGGATCCGGTACCGAGGAGATCTGCC
 GCC**CGGATCGCC**

ATGACGCAGGGTCCCGGTGGCCGCGGCCCGAGCCCGAGGCGCCACCACCTTCTGCGCGCTGCTAC
 CGCGCATGCCGAGTGAAGTTCGCGGCCCGGTAGCTTCTGGGCCGGTCCGGCGGCTGCGCGCT
 GGCGGGGCGGCAGAGGCGAGCCCGAGCTGGGGTCCCGCGCTGGCCGCGTGTGGTGCCTGCGAA
 CCGCGCTGTGCCGCGCCTGTCCGCTACCAGCTCTCGGCCGCTGCCGGGCTCGGGGCGCGC
 GGGAACTCCCGACGTCGCCGACGAGTGGTGCACAAGGCGGCTTATTACAAGCCCGCACGGCTG
 GCTGCACCCCGATGCGAGGGTCTGGGGCCGGGCTCTTACATCGTTCGGTACATGGGCTGCATTGAG
 GTGCTCCGATCTATGCGCTCCCTGGATTCAACACCCGGACACAGGTGACGAGGGAAGCCATCAATCGC
 TCCACGAGGCTGTCCAGGTGTCCGAGGCTCCTGGAAGAAGAAGCCCCCAACAAGGCGCTGGCCTCCAT
 CTTGGGAAAAGCAACCTGCGCTTCGCCGCGATGAGCATCTCAGTCAACATCTCTGTGGACGGCCTAAC
 TTGTCAGTTCGCCCTACCCGTCAGATCATCGCCAACCATCACATGCACTATTTCTTCGCTCCGGTG
 GCGACACGGACATGACCGATTACGTGGCCTATGTGGCCAAGGACCCCATCAACCAGAGAGCTGCCACAT
 CTTGGAATGCTGTGAGGGTCTCGCCAGAGTGTATCAGCACCGTGGGGCAAGCCTTTGAGCTGCGCTTC
 AAGCAATACCTGCACAGTCCGCCAAGGCTGTCGTGCCCCCTGAAAGGCTGACCGGGTGGAGGAGTCGG
 CCTGGGGTGTGGTGGAGTTACTGCAGACCAGTACTACAACAGCATTCCAGGAAAGGAGCCACCCCT
 GGGCGGCTGGTGGACTCCAGACTGGCTGTACACAGCCCTGTGCGCTGACAACACTTGGGGCCTTGA
 CAGGGATTGTACCTGCCTGGAGAGATGTCCTGGCTTGCCTGGGACATGGGCCCTCTGGAGCAGTCC
 CACTGGGGATGGCTACGTGCAGGCAGATGCCCGAGGGCCACATGACTACGAGGAACACCTGTATGTCAA
 CACCCAGGGCCTGGACGCTTTGGAGCTTGAGACACCTCCGAGACACCTCTGCAGCTGAGGACAGCCCC
 AAGAAGGACCTGTTTGACATGCGACCCTTTGAAGATGCCCTGAAGTTGCACGAGTCTCCGTGGCAGCAG
 GCATTACTGCAGCCTCACTCCCTCTGGAGGATCAGTGGCCAGCCCCCTACCCGAGGGCCCCATTGC
 ACCCACAGAGGAGCAACTGAGGCAGGAGCCCTGGTACCATGGACGAATGAGCCGTCGGGCTGCAGAGAAG
 CTGCTTCGTGCCGATGGGACTTCTTGTGAGAGACAGCATACCAACCCGGGCGAGTATGCTCAGCAG
 GCATGCACGCGGGGCGAGCCCAAGCACCTGCTGCTGGTGGACCCCGAGGGTGTGGTACGGACAAAAGATG
 GCTGTTTGAGAGCATCAGCCACCTCATAGACTATCACCTGAAGAACGGGTTGCCCATCGTGGCTGCCGAG
 AGTGAAGTGCATCTCGGGGAGTGGTCTCTCGGGAGCCA

ACGCGTACGCGGGCCGCTCGAGCAGAAACTCATCTCAGAAGAGGATCTGGCAGCAAATGATATCCTGGATT
 ACAAGGATGACGACGATAAGGTTTAA

Protein Sequence:

>RR206069 representing NM_001108065
 Red=Cloning site Green=Tags(s)

MTQGGPGRAPPEPEPTTFCALLPRMPQWKFAAPGSFLGRGPAARVAGAAEAQPEPGVPALAAVLGACE
 PRCAAPCPLPALGRCRGSGRGARGTPDVADEWVRKGGF IHKPAHGWLHPDARVLGPGVSYIVRYMGIE
 VLRSMSRLDFNTRTQVTREAINRLHEAVPGVRSWKKKAPNKALASILGKSNLRFAGMSISVNIISVDGLN
 LSVPATRQIIANHHMQSISFASGGDTDMTDYVAVYAKDPINQRACHILECCEGLAQSVISTVQAFELRF
 KQYLHSPPKAVVPPERLTGLEESAWGDGEVTADHDYNSIPGKEPPLGGLVDSRLAVTQPCALTTLGGGLG
 QGLSPAWRDVRGLPMDMGPSPGAVPPGDYVQADARGPHDYEEHLVYNTQGLDALELEDTSETPLQPEDSP
 KKDLDFMRPFEDALKLHECSVAAGITAASLPLEDQWSPPTRRAPIAPTEEQLRQEPWYHGRMSRRAAEK
 LLRADGDFLVRDSITNPGQYVL TGMHAGQPKHLLLVDPEGVVVRTKDVLFESISHL IDYHLKNGLPIVAAE
 SELHLRGVVSREP

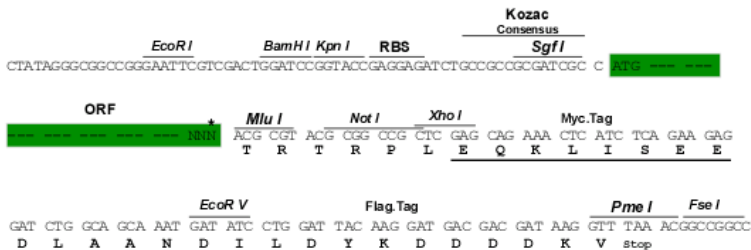
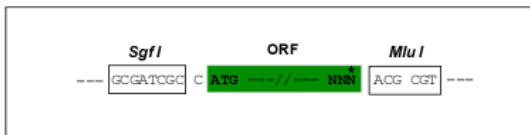
TRTRPLEQKLISEEDLAANDILDYKDDDDKV

Restriction Sites:

Sgfl-MluI

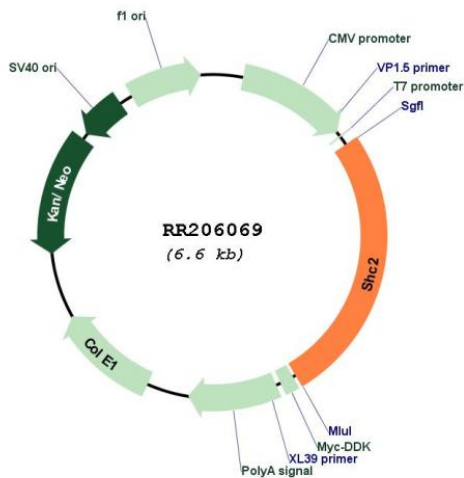
Cloning Scheme:

Cloning sites used for ORF Shuttling:



* The last codon before the Stop codon of the ORF

Plasmid Map:



ACCN:

NM_001108065

ORF Size:	1719 bp
OTI Disclaimer:	The molecular sequence of this clone aligns with the gene accession number as a point of reference only. However, individual transcript sequences of the same gene can differ through naturally occurring variations (e.g. polymorphisms), each with its own valid existence. This clone is substantially in agreement with the reference, but a complete review of all prevailing variants is recommended prior to use. More info
OTI Annotation:	This clone was engineered to express the complete ORF with an expression tag. Expression varies depending on the nature of the gene.
Components:	The ORF clone is ion-exchange column purified and shipped in a 2D barcoded Matrix tube containing 10ug of transfection-ready, dried plasmid DNA (reconstitute with 100 ul of water).
Reconstitution Method:	<ol style="list-style-type: none">1. Centrifuge at 5,000xg for 5min.2. Carefully open the tube and add 100ul of sterile water to dissolve the DNA.3. Close the tube and incubate for 10 minutes at room temperature.4. Briefly vortex the tube and then do a quick spin (less than 5000xg) to concentrate the liquid at the bottom.5. Store the suspended plasmid at -20°C. The DNA is stable for at least one year from date of shipping when stored at -20°C.
RefSeq:	NM_001108065.1 , NP_001101535.1
RefSeq Size:	3904 bp
RefSeq ORF:	1722 bp
Locus ID:	314612
UniProt ID:	O70142
Cytogenetics:	7q11
MW:	61.8 kDa
Gene Summary:	predicted to be a member of the Shc family of adaptor proteins that bind to receptor tyrosine kinases and mediate cell signalling [RGD, Feb 2006]