

Product datasheet for **RR206037**

Kcnq2 (NM_133322) Rat Tagged ORF Clone

Product data:

Product Type:	Expression Plasmids
Product Name:	Kcnq2 (NM_133322) Rat Tagged ORF Clone
Tag:	Myc-DDK
Symbol:	Kcnq2
Vector:	pCMV6-Entry (PS100001)
E. coli Selection:	Kanamycin (25 ug/mL)
Cell Selection:	Neomycin



[View online »](#)

ORF Nucleotide Sequence:

>RR206037 representing NM_133322
 Red=Cloning site Blue=ORF Green=Tags(s)

TTTTGTAATACGACTCACTATAGGGCGGCCGGGAATTCGTCGACTGGATCCGGTACCGAGGAGATCTGCC
 GCC**CGCATCGCC**

ATGGTGCAAAAGTCGCGCAACGGTGGCGTGTACCCGGCACCAGCGGGGAAAAAAGCTCAAGGTGGGCT
 TCGTGGGCTGGACCCCGCGCGCCGACTCCACTCGCGACGGCGGCTACTCATCGCGGCTCCGAGGC
 CCCAAGCGCGGACGCTTTTGTAGCAAGCCGCGGACGGCGCGGGAGCCGGGAAGCCCCAAAGCGC
 AACGCCTTCTACCGCAAGCTGCAGAATTTCTATAACAACGTGCTAGAGCGGCCCGCGGTTGGCGTTCA
 TCTACCACGCCTACGTGTTTCTTTAGTCTTCTCCTGCCTTGTGCTTCCGTGTTTTCCACCATCAAGGA
 GTATGAGAAGAGTTCCGAAGGGGCCCTACATCTTGAAATCGTGACCATCGTGGTATTCGGTGTGAG
 TACTTTGTGAGAATCTGGGCTGCAGGCTGCTGCTGCCGGTATCGAGGCTGGAGGGCCGGCTCAAGTTG
 CCAGGAAGCCATTCTGTGTGATCGACATCATGGTCTGATTGCCTCCATTGCTGTGCTGGCTGCTGGCTC
 CCAGGGCAATGTCTTTGCTACGTCTGCACCTTCGGAGCTTCCGGTCTTACAAATCTTACGGATGATCCGT
 ATGGACCGGAGGGGGCGCACCTGGAAGCTCCTGGGATCGGTGGTCTACGCTCACAGCAAGGAGCTGGTGA
 CTGCGTGGTACATTGGCTTCTCTGCCTCATCCTGGCCTCGTTTCTGGTGTACTTGGCAGAAAAGGGTGA
 GAATGACCACTTCGACACCTACGCGGATGCACTCTGGTGGGGTCTGATCACCTGACAACCATTTGGCTAC
 GGGGACAAGTACCCTCAGACCTGGAACGGGAGGCTGTTAGCAGCGACGTTTACCCTCATTGGTGTCTCAT
 TCTTCGCTCTTCTGTGGCATTTTGGGATCCGGCTTGGCCCTGAAAGTCCAAGAGCAGCATCGGCAAAA
 ACACCTTGAGAAACGGCGGAATCCTGCGGCAGGTCTGATCCAGTCTGCCTGGAGATTCTATGCTACTAAC
 CTCTCACGCCAGCCTGCACCTCACGTGGCAGTACTACGAGCGGACAGTCACTGTCCCCATGATCAGCT
 CACAAACTCAAACCTATGGGGCTCCAGACTCATTCCGCTCTGAACCAGCTGGAGATCTGAGGAATCT
 CAAGAGCAAATCTGGACTCACCTTCAGGAAGGAGCCACAGCCAGGCCATCACAAAGTCAGAAGGTCAGT
 TTGAAAGATCGTGTCTTCTCCAGCCCCGAGGCGTGGCTGCCAAGGGGAAGGGTCTCCCGAGGCCAGA
 CGGTCCGGCGGTCCCCAGTGGGATCAGAGTCTCGATGACAGCCCAAGCAAGGTGCCAAGAGCTGGAG
 CTTTGGTGACCGCAGCCGTGCACGCCAGGCTTCCGATCAAGGGCGCTGCATCCCGCAGAACTCAGAA
 GAAGCAAGCCTCCCTGGGAGGATATCGTGAGGACAACAAGAGCTGTAAGTGGAGTTTGTGACTGAAG
 ATCTTACCCTGGCTCAAAGTCAAGTCAAGAGCTGTGTGTGTTATGCGGTTCTTGGTATCTAAGCGAAA
 GTTCAAAGAGAGTCTGCGCCCATATGACGTGATGGATGTCATCGAACAGTACTCGGCCGGACACTGGAT
 ATGTTGTCCCGAATCAAGAGCCTGCAGTCCAGAGTGGACCAGATTGTGGGGCGGGCCCCGACAATAACGG
 ACAAGGACCGCACAAAGGCCACGCGGAGACGGAAGTCCCGAAGACCCAGCATGATGGGACGCCTTGG
 GAAGGTGGAAAAACAGGTCTTGTCCATGGAAAAAGAGTAGACTTCTGTGGTGGAGATCTACACACAGAGA
 ATGGGCATCCCACCAGCAGAGACAGAGGCTATTTCCGGGCAAGGAGCCTGAGCCGGCACCACCCTACC
 ACAGCCCCGAGGACAGCCGTGACCATGCAGACAAGCATGGCTGTATTATTAAGATTGTCCGCTCCACCAG
 CTCTACGGGCCAGAGGAAATACGCCGCACCCCAAGTATGCCCCCTGCCGAGTGTCCCCATCCACCTCG
 TGGCAGCAGAGCCACCAGCGCCACGGCACCTCCCCCGTGGGAGACCATGGCTCACTGGTACGCATCCCAC
 CACCCCTGCGCACGAGCGCTCACTGTCTGCCTACAGTGGGGCAACAGAGCCAGTACCGAGTCTTGGAG
 GCTGGAGGGCACCCAGCCTGCAGGCCCTGAGGCAGCCCTGCCGGATAGCGACACGTCATCTCCATC
 CCTTCGGTGGACCACGAGGAGCTGGAGCGTTCCTTTAGCGGTTTCAAGTATCTCCAGTCCAAGGAGAAC
 TGAATGCCTGGCCAGCTGTTATGCAGCTGTGGCGCCGTGCGCCAAGGTAGGCCCTACATTGCAGAGGG
 TGAGTCTGACACAGACTCAGACCTCTGCACACCGTGTGGGCCACCCACGCTCTGCCACTGGTGAAGGC
 CCCTTTGGAGATGTGGCTTGGGCAGGGCTAGGAAG

ACGCGTACGCGGGCGCTCGAGCAGAAACTCATCTCAGAAGAGGATCTGGCAGCAAATGATATCCTGGATT
 ACAAGGATGACGACGATAAGGTTTAA

Protein Sequence: >RR206037 representing NM_133322
Red=Cloning site Green=Tags(s)

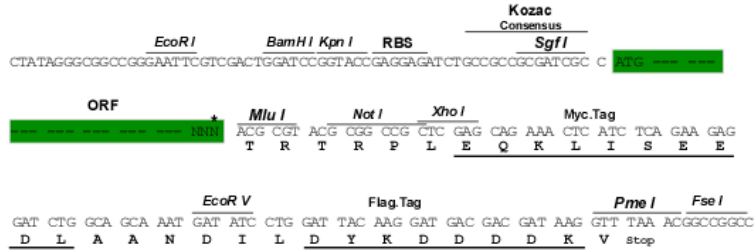
MVQKSRNGGVYPGTSGEKKLKVG FVGLDPGAPDSTRDGALLIAGSEAPKRGSVLSKPRTGGAGAGKPPKR
NAFYRKLQNFLYNVLERPRGWAFIYHAYVLLVFSCLVLSVFSTIKEYEKSSEGALYILEIVTIVVFGVE
YFVRIWAAGCCCRYRGWRGRLKFARKPFCVIDIMVLIASIAVLAAGSQGNVFATSALRSLRFLQILRMIR
MDRRGGTWKLLGSVVYAHSKELVTAWYIGFLCLILASFLVYLAEKGENDHFDTYADALWWGLITLTTIGY
GDKYPQTWNGRLLAATFTLIGVSFFALPAGILGSGFALKVQEQHRQKHFEKRRNPAAGLIQSAWRFYATN
LSRTDLHSTWQYYERTVTVPMISSQTQTYGASRLIPPLNQLEMLRNLKSKSGLTFRKEPQPEPSPSQKVS
LKDRVFS SPRGVAAGKGGSPQAQTVRRSPSADQSLDDSPSKVPKSWFSGDRSRARQAFRIKGAASRQNSE
EASLPGEDIVEDNKSCNCFVTEDLTPGLKVSIRAVCMRFLVSKRKFKESLRPYDVMVIEQYSAGHLD
MLSRIKSLQSRVDQIVGRGPTITDKDRTKGPAETELPEDPSMMGRLGKVEKQVLSMEKKLDFLVSIIYQR
MGIPPAETEAYFGAKEPEPAPPYHSPEDSRDHADKHGCI IKIVRSTSSTGQRKYAAPVMPPAECPPSTS
WQQSHQRHGTSPVGDHGSLVRIPPPPAHERSLAYS SGGNRASTFLRLEGT PACRPSEAALRSDTSISI
PSVDHEELERSFSGFSISQSKENLNALASCYAAVAPCAKVRPYIAEGESD TSDLC TPCGPPRSATGEG
PFGDVAWAGPRK

TRTRPLEQKLISEEDLAANDILDYKDDDDKV

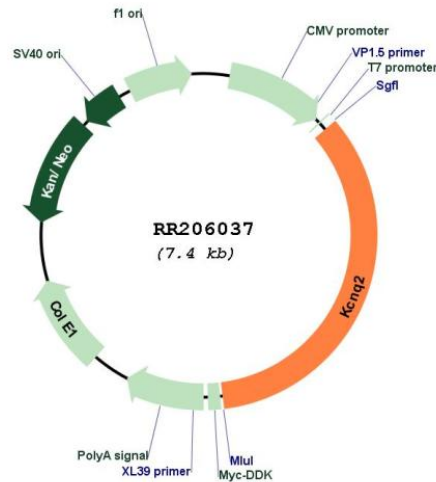
Restriction Sites: Sgfl-Mlul

Cloning Scheme:

Cloning sites used for ORF Shuttling:



* The last codon before the Stop codon of the ORF

Plasmid Map:


ACCN: NM_133322

ORF Size: 2556 bp

OTI Disclaimer: Due to the inherent nature of this plasmid, standard methods to replicate additional amounts of DNA in *E. coli* are highly likely to result in mutations and/or rearrangements. Therefore, OriGene does not guarantee the capability to replicate this plasmid DNA. Additional amounts of DNA can be purchased from OriGene with batch-specific, full-sequence verification at a reduced cost. Please contact our customer care team at custsupport@origene.com or by calling 301.340.3188 option 3 for pricing and delivery.

The molecular sequence of this clone aligns with the gene accession number as a point of reference only. However, individual transcript sequences of the same gene can differ through naturally occurring variations (e.g. polymorphisms), each with its own valid existence. This clone is substantially in agreement with the reference, but a complete review of all prevailing variants is recommended prior to use. [More info](#)

OTI Annotation: This clone was engineered to express the complete ORF with an expression tag. Expression varies depending on the nature of the gene.

Components: The ORF clone is ion-exchange column purified and shipped in a 2D barcoded Matrix tube containing 10ug of transfection-ready, dried plasmid DNA (reconstitute with 100 ul of water).

- Reconstitution Method:**
1. Centrifuge at 5,000xg for 5min.
 2. Carefully open the tube and add 100ul of sterile water to dissolve the DNA.
 3. Close the tube and incubate for 10 minutes at room temperature.
 4. Briefly vortex the tube and then do a quick spin (less than 5000xg) to concentrate the liquid at the bottom.
 5. Store the suspended plasmid at -20°C. The DNA is stable for at least one year from date of shipping when stored at -20°C.

RefSeq: [NM_133322.1](#), [NP_579856.1](#)

RefSeq Size: 4165 bp
RefSeq ORF: 2559 bp
Locus ID: 170848
UniProt ID: [O88943](#)
Cytogenetics: 3q43
MW: 93.9 kDa
Gene Summary: potassium channel involved in sympathetic neuronal excitability [RGD, Feb 2006]