

## Product datasheet for **RR205991**

### Lpl (NM\_012598) Rat Tagged ORF Clone

#### Product data:

Product Type:	Expression Plasmids
Product Name:	Lpl (NM_012598) Rat Tagged ORF Clone
Tag:	Myc-DDK
Symbol:	Lpl
Synonyms:	MGC93586
Vector:	pCMV6-Entry (PS100001)
E. coli Selection:	Kanamycin (25 ug/mL)
Cell Selection:	Neomycin



[View online »](#)

**ORF Nucleotide Sequence:**

>RR205991 representing NM\_012598  
 Red=Cloning site Blue=ORF Green=Tags(s)

TTTTGTAATACGACTCACTATAGGGCGGCCGGGAATTCGTCGACTGGATCCGGTACCGAGGAGATCTGCC  
 GCCGCGATCGCC

ATGGAGAGCAAAGCCCTGCTCCTGGTGGCCCTGGGAGTTGGCTCCAGAGTTTGACCGCCTTCCGCGGAG  
 GGGTGGCCGACAGACGACGGGGAAGAGATTTCTCAGACATCGAAAAGTAAATTTGCCCTAAGGACCCCTGA  
 AGACACAGCTGAGGACACTTGTCACTCTGATTCTGGATTAGCAGACTCTGTGTCTAACTGCCACTTCAAC  
 CACAGCAGCAAAACCTTTGGTGTATCCATGGATGGACGGTGACAGGAATGTATGAGAGTTGGTGCCCA  
 AACTTTGGTGGTGCCTATACAAAAGAGAACCTGACTCCAATGTCATTGTAGTAGACTGGTTGTATCGGGC  
 CCAGCAACATTATCCAGTGTCTGCCGGCTATACCAAGCTGGTGGGAAATGATGTGCCAGGTTTCATCAAC  
 TGGTTGGAGGAAGAATTTAACTACCCCTAGACAAATGCCACCTTAGGGTACAGTCTGGAGCCCATG  
 CTGCTGGCGTGGCAGGAAGTCTGACCAACAAGAAGGTCAATAGAATTACTGGCTTGGATCCAGCTGGCC  
 TAACTTTGAGTATGCAGAAGCCCTAGTCGCCTTCTCCTGATGATGCGGATTTCTGATAGTCTTACAC  
 ACATTTACCAGGGGGTCCGCTGGTCAAGTATTGGGATCCAGAAACAGTAGGGCATGTTGATATTTATC  
 CCAATGGAGGCATTTCCAGCCAGGATGCAACATTGGAGAAGCCATTCGTGTAATTGCAGAGAAGGGCT  
 TGGAGATGTGGACCAGCTGGTGAAGTGCTCGCACGAGCGCTCCATCCATCTTTCATTGACTCCCTGCTG  
 AATGAAGAAAACCCAGCAAGGCATACAGGTGCAATTCGAAGGAGGCATTTGAGAAAAGGGCTCTGCCTGA  
 GTTGACAGAAAGATCGCTGTAACAACGTGGGCTATGAGATCAACAAGGTGAGAGCAAGAGAAGCAGTAA  
 GATGTACCTGAAGACTCGCTCTCAGATGCCCTACAAAGTATTCCATTACCAAGTCAAGATTCACTTTTCT  
 GGAAGTGAAGATGACAAGCAAAACAACCCAGGCCTCGAGATTTCTGTATGGCAGAGTGGTCAAAGTG  
 AGAACATTCCTTCAACCTGCCGAGGTGCGCACAAATAAAACCTACTCCTTCTGATTTACAGCGAGGT  
 GGACATCGGGGAATTGCTGATGATGAAGCTTAAAGTGAAGAACGACTCCTACTTCCGCTGGTCCAGCTGG  
 TGGAGCAGTCCCAGCTTTGTCATCGAGAAGATCCGAGTGAAGCCGGAGAGACTCAGAAAAAGGTATCT  
 TCTGTGCCAGGGAGAAAGTTTCTCATCTGCAGAAAGGAAAGGACGCTGCAGTGTGTGAAATGCCATGA  
 CAAGTCTCTGAAGAAGTCGGGC

ACGCGTACGCGGCCGCTCGAGCAGAAACTCATCTCAGAAGAGGATCTGGCAGCAAATGATATCCTGGATT  
 ACAAGGATGACGACGATAAGGTTTAA

**Protein Sequence:**

>RR205991 representing NM\_012598  
 Red=Cloning site Green=Tags(s)

MESKALLLVALGVWLQSLTAFRGGVAAADGGRDFSDIESKFFALRTPEDTAEDTCHLIPGLADSVSNCHF  
 HSSKTFVVIHGWVTGMYESWVPKLVAALYKREPDSNVI VVDWL YRAQQHYPVSAGYTKLVGNDVARFIN  
 WLEEEFNYP LNDVHLLGYSLGAHAAGVAGSLTNKKVNRITGLDPAGPNFEYAEAPSRLSPDDADFVDVLH  
 TFRGSPGRSIGIQKPVGHVDIYPNGGTFQPGCNIGEAIRVIAEKGLGDVDQLVKCSHERSIHLFIDSL  
 NEENPSKAYRCNSKEAFEKGLCLSCRKNRCNNVGYEINKVRAKRSKMYLKTRSQMPYKVFHYQVKIHF  
 GTENDKQNNQAFEISLYGTVAESENIPFTLPEVATNKYSFLIYTEVDIGELLMMKLKWKNDYFRWSDW  
 WSSPSFVIEKIRVKAGETQKKVIFCAREKVSHLQKGDAAVFKCHDKSLKKS

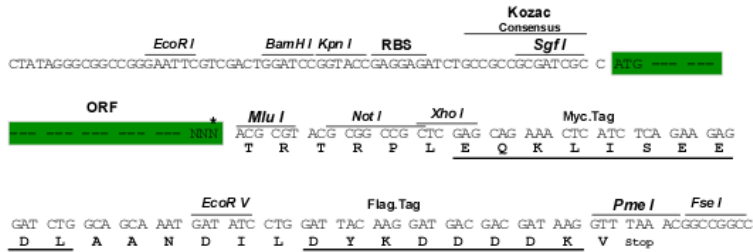
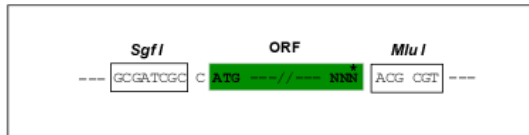
TRTRPLEQKLI SEEDLAANDILDYKDDDDKV

**Restriction Sites:**

SgfI-MluI

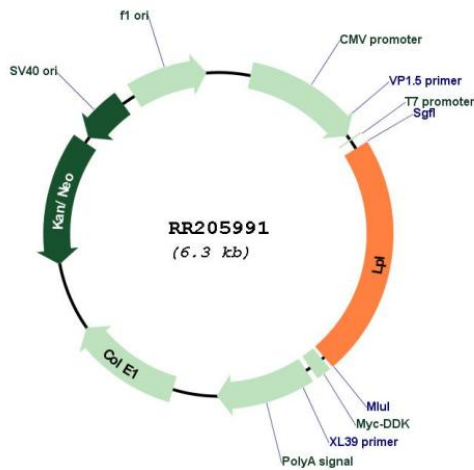
Cloning Scheme:

Cloning sites used for ORF Shuttling:



\* The last codon before the Stop codon of the ORF

Plasmid Map:



ACCN: NM\_012598

ORF Size: 1422 bp

<b>OTI Disclaimer:</b>	<p>Due to the inherent nature of this plasmid, standard methods to replicate additional amounts of DNA in E. coli are highly likely to result in mutations and/or rearrangements. Therefore, OriGene does not guarantee the capability to replicate this plasmid DNA. Additional amounts of DNA can be purchased from OriGene with batch-specific, full-sequence verification at a reduced cost. Please contact our customer care team at <a href="mailto:custsupport@origene.com">custsupport@origene.com</a> or by calling 301.340.3188 option 3 for pricing and delivery.</p> <p>The molecular sequence of this clone aligns with the gene accession number as a point of reference only. However, individual transcript sequences of the same gene can differ through naturally occurring variations (e.g. polymorphisms), each with its own valid existence. This clone is substantially in agreement with the reference, but a complete review of all prevailing variants is recommended prior to use. <a href="#">More info</a></p>
<b>OTI Annotation:</b>	This clone was engineered to express the complete ORF with an expression tag. Expression varies depending on the nature of the gene.
<b>Components:</b>	The ORF clone is ion-exchange column purified and shipped in a 2D barcoded Matrix tube containing 10ug of transfection-ready, dried plasmid DNA (reconstitute with 100 ul of water).
<b>Reconstitution Method:</b>	<ol style="list-style-type: none"> <li>1. Centrifuge at 5,000xg for 5min.</li> <li>2. Carefully open the tube and add 100ul of sterile water to dissolve the DNA.</li> <li>3. Close the tube and incubate for 10 minutes at room temperature.</li> <li>4. Briefly vortex the tube and then do a quick spin (less than 5000xg) to concentrate the liquid at the bottom.</li> <li>5. Store the suspended plasmid at -20°C. The DNA is stable for at least one year from date of shipping when stored at -20°C.</li> </ol>
<b>RefSeq:</b>	<a href="#">NM_012598.2</a> , <a href="#">NP_036730.1</a>
<b>RefSeq Size:</b>	3055 bp
<b>RefSeq ORF:</b>	1425 bp
<b>Locus ID:</b>	24539
<b>UniProt ID:</b>	<a href="#">Q06000</a>
<b>Cytogenetics:</b>	16p14
<b>MW:</b>	53.1 kDa
<b>Gene Summary:</b>	lipase that hydrolyzes triglycerides; may be involved in the development of development of hypertriglyceridemia [RGD, Feb 2006]