

Product datasheet for **RR205926**

Atp1b2 (NM_012507) Rat Tagged ORF Clone

Product data:

Product Type: Expression Plasmids
Product Name: Atp1b2 (NM_012507) Rat Tagged ORF Clone
Tag: Myc-DDK
Symbol: Atp1b2
Synonyms: Amog; ATPB2; ATPB2S; RATATPB2S
Vector: pCMV6-Entry (PS100001)
E. coli Selection: Kanamycin (25 ug/mL)
Cell Selection: Neomycin
ORF Nucleotide Sequence: >RR205926 representing NM_012507
Red=Cloning site Blue=ORF Green=Tags(s)

TTTTGTAATACGACTCACTATAGGGCGCCGGGAATTCGTCGACTGGATCCGGTACCGAGGAGATCTGCC
GCC**CGGATCGCC**

ATGGTCATCCAAAAGAGAAGAAGAGCTGCGGGCAGGTGGTTGAGGAGTGAAGGAGTTCGTGTGGAATC
CTCGGACGCACCAGTTCATGGGGCGCACCGGGACCAGCTGGGCC TTCATCCTCCTCTTCTACCTCGTCTT
CTATGGTTTCTCACGGCCATGTTACCCCTCACCATGTGGTAATGCTGCAGACCGTCTCTGACCATAACC
CCCAAGTACCAGGATCGACTGGCCACACCAGGCTTGATGATTCGACCCAAGACTGAGAACCTTGATGTCA
TTGTCAACATTAGCGGACTGAAAGCTGGGATCAGCATGTTGAGAAGCTCAACAAGTTCCTGGAGCCTTA
CAACGACTCCATCCAAGCTCAAAAGAATGATGTCTGCCGTCTGGGCGATATTATGAGCAACCCGATAAT
GGGGTTCTGAACTATCCAAAACGTGCCAGTTCACCGGACCCAGCTGGGCAATTGCTCTGGCATTG
GGGACCTACTCACTATGGTTACAGCACCGGGCAGCCCTGTGTCTTCATCAAAATGAACCGGGTCATCAA
CTTCTATGCAGGGGCAAACCAGAGCATGAACGTTACCTGTGTTGGGAAGAAAGATGAAGATGCTGAGAAT
CTTGGACACTTCATCATGTTCCCTGCCAATGGCAACATCGACCTGATGTATTTCCCTACTATGGCAAAA
AGTTCCATGTAACATACACAGCCCTTGGTGGCTGTGAAGTTCCTGAATGTGACCCCAATGTGGAGGT
GAATGTAGAATGCCGAATTAACGCTGCCAATATTGCCACGGATGACGAGCGGGACAAGTTTCTGGCCGC
GTGGCCTTCAAGCTTCGAATCAACAAAGCC

ACGCGTACGCGGCCGCTCGAGCAGAAACTCATCTCAGAAGAGGATCTGGCAGCAATGATATCCTGGATT
ACAAGGATGACGACGATAAGGTTTAA



[View online »](#)

Protein Sequence: >RR205926 representing NM_012507
 Red=Cloning site Green=Tags(s)

MVIQKEKKSCGQVVEEWKEFVWNPRTHQFMGRTGTSWAFILLFYLVFYGFLTAMFTLTMWVMLQTVSDHT
 PKYQDRLATPGLMIRPKTENLDVIVNISDTESWDQHVQKLNKFLPEYNDISQAQKNDVCRPGRYYEQPDN
 GVLNYPKRACQFNRTLGNCSGIGDPHYGYSTGQPCVF IKMNRVINFYAGANQSMNVTCVGGKDEDAEN
 LGHFIMFPANGNIDLMYFPYYGKGFHVNYTQPLVAVKFLNVTNVEVNVVECRINAANIATDDERDKFAGR
 VAFKLRINKA

TRTRPLEQKLISEEDLAANDILDYKDDDDKV

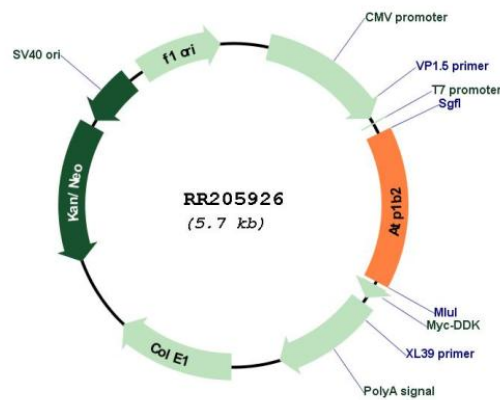
Restriction Sites:

Sgfl-MluI

Cloning Scheme:



Plasmid Map:



ACCN: NM_012507

ORF Size: 870 bp

OTI Disclaimer:	The molecular sequence of this clone aligns with the gene accession number as a point of reference only. However, individual transcript sequences of the same gene can differ through naturally occurring variations (e.g. polymorphisms), each with its own valid existence. This clone is substantially in agreement with the reference, but a complete review of all prevailing variants is recommended prior to use. More info
OTI Annotation:	This clone was engineered to express the complete ORF with an expression tag. Expression varies depending on the nature of the gene.
Components:	The ORF clone is ion-exchange column purified and shipped in a 2D barcoded Matrix tube containing 10ug of transfection-ready, dried plasmid DNA (reconstitute with 100 ul of water).
Reconstitution Method:	<ol style="list-style-type: none">1. Centrifuge at 5,000xg for 5min.2. Carefully open the tube and add 100ul of sterile water to dissolve the DNA.3. Close the tube and incubate for 10 minutes at room temperature.4. Briefly vortex the tube and then do a quick spin (less than 5000xg) to concentrate the liquid at the bottom.5. Store the suspended plasmid at -20°C. The DNA is stable for at least one year from date of shipping when stored at -20°C.
RefSeq:	NM_012507.3 , NP_036639.2
RefSeq Size:	3014 bp
RefSeq ORF:	873 bp
Locus ID:	24214
Cytogenetics:	10q24
MW:	33.4 kDa
Gene Summary:	plays a role in Na ⁺ and K ⁺ transport [RGD, Feb 2006]