

## Product datasheet for **RR205888**

### Slc11a1 (NM\_001031658) Rat Tagged ORF Clone

#### Product data:

Product Type:	Expression Plasmids
Product Name:	Slc11a1 (NM_001031658) Rat Tagged ORF Clone
Tag:	Myc-DDK
Symbol:	Slc11a1
Synonyms:	Bcg; Itg; Lsh; Nramp1
Vector:	pCMV6-Entry (PS100001)
E. coli Selection:	Kanamycin (25 ug/mL)
Cell Selection:	Neomycin



[View online »](#)

**ORF Nucleotide Sequence:**

>RR205888 representing NM\_001031658  
 Red=Cloning site Blue=ORF Green=Tags(s)

TTTTGTAATACGACTCACTATAGGGCGGCCGGGAATTCGTCGACTGGATCCGGTACCGAGGAGATCTGCC  
 GCC**GCGATCGCC**

ATGATTCTGTGACAAAAACCCAGAGGGTGAACAGGCCAGTTATGGCTCCATTCCAGCCTGCCTAGCC  
 CAGCACCTCAGCCAGAGCCTTCCAGGAACACCTACCTGAGTGAGAAGATTCCCATCCCCAGCACGGAACA  
 GCTGCTCTGGGTGCTGCTCTGGGCCACTGTGCTAGGCTTGTCTGCCAGCGGCTGGCTGCCCGGCTGGGC  
 GTGGTGACAGGCAAGGATCTGGGTGAAATCTGCCATCTCTACTACCCTAAGGTGCCCGCATCTCCTCT  
 GGCTGACCATTGAGCTGGCCATTGTGGGCTCAGACATGCAGGAAGTCATCGGAACGGCTATCTCCTTCAA  
 TCTGCTCTCCGCTGGACGCATCCCCCTGTGGGTGGCGTACTGATCACTATTGTGGATACCTTCTTCTC  
 CTCTTCTGGATAACTATGGTTTGCACAAGTTGGAAGCGTTTTTTGGGTCTCTGTTACCATAATGGCTT  
 TGACCTTCGGTTATGAGTATGTGGTGGCTCGTCCATCTCAGGGAGCCCTTCTTAAGGGCCTGTTCTGCC  
 CTCTGCCCGGCTGTGGGCAGCCTGAGCTGCTGCAGGCAGTGGGCATCGTTGGTGCCATCATCATGCCCT  
 CATAACATCTACTGCACTCGGCCTTGGTCAAGTCTAGAGAGGTAGACAGAACTCGCCGGGGGATGTTCC  
 GAGAAGCCAACATGTACTTCTGACTGAGGCCACCATCGCCCTCTTCGTGTCATTTCATATCAACCTCTT  
 CGTCATGGCTGTTTTGGTCAAGCCTTCTACCAGCAAACCAATGAGGAAGCGTTCAACATCTGTGCCAAC  
 AGCAGCCTCCACAACATGCTAAGATCTTCCCCAGGGACAATAACACAGTGTCACTGGATATTTATCAAG  
 GAGGTGTGATCTAGGCTGTCTCTTGGCCCTGCGGCCCTCTACATCTGGGCAGTAGGCTCTCTGGCAGC  
 GGGTCAGAGTTCTACTATGACCGGCACCTATGCAGGACAATTCGTGATGGAGGGTTTCTTAAGCTGCGA  
 TGGTCTCGATTTGCACGCGTCTTCTCACTCGCTTTGCGCTATCCTGCCACTGTGCTGGTGGCTGTCT  
 TCCGAGACCTGAGGGACCTGTCCGGCCCAACGATCTACTCAATGTTCTGCAGAGTCTACTGTGCCCTT  
 TGCTGTGCTGCCATTCTGACTTTCACCAGCATGCCAGCGTCAATGCAGGAGTTTGCCAATGGCTGGTTG  
 AGCAAAGTCATTACTTCTGCATCATGGCACTGGTCTGCGCCATCAACCTGTACTTCTGATCAGCTACC  
 TGCCAGCCTCCCGCACCTGCCTACTTTGGCCTTGTGGCTCTGCTCGCCATAGGTTACTTGGGCCTTAC  
 TGCTTATCTGGCTGGACCTGTTGCATTGCCCATGGAGCCAAGTTTCTGACCCACAGCTCCCACCAGCGC  
 TTCCTGTATGGACTCCCTATCGAGGAGCAGGAAGGCAGGGAGGGTTCCGGG

AG**CGGACCG**ACGCGTACGCGGCCGCTCGAGCAGAACTCATCTCAGAAGAGGATCTGGCAGCAAATGATATCC  
 TGGATTACAAGGATGACGACGATAAGGTTTAA

**Protein Sequence:**

>RR205888 representing NM\_001031658  
 Red=Cloning site Green=Tags(s)

MIRDKNPQRVNRPSYGSISSLPSPAPQPEPSRNTYLSEKIPIPSTEQLLWVLLWATVLLGLLCQRLAARLG  
 VVTGKDLGEICHLYYPKVPRILLWLTIELAIVGSDMQEVIQTAISFNLLSAGRIPLWGGVLTIVDTFFF  
 LFLDNYGLRKLEAFFGFLVTIMALTFGYEYVVARPSQGALLKGLFLPSCPQGGPELLQAVGIVGAIIMP  
 HNIYLHSALVKSREVDTRRRGDVREANMYFLTEATIALFVSFIINLFVMAVFGQAFYQQTNEEAFNICAN  
 SSLHNYAKIFPRDNNTVSVDIYQGGVILGCLFGPAALYIWAAGVLLAAGQSTMTGTAGQFVMEGFLKLR  
 WSRFARVLLTRSCAILPTVLVAVFRDLRDL SGLNDLLNVLQSLLLPFVAVLPILFTSMPAVMQEFANGWL  
 SKVITSCIMALVCAINLYFVISYLPSPHPAYFGLVALLAIGYLGLTAYLAWTCCIAHGAKFLTHSSHQR  
 FLYGLPIEEQEGREGSG

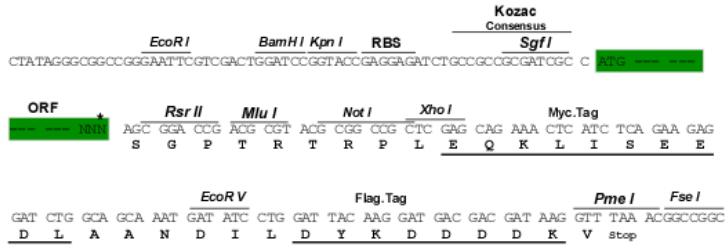
SGP**TRTRPLEQKLI**SEEDLAANDILDYKDDDDKV

**Restriction Sites:**

SgfI-RsrII

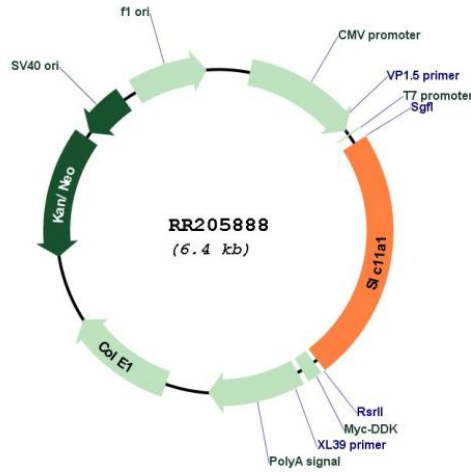
Cloning Scheme:

Cloning sites used for ORF Shuttling:



\* The last codon before the Stop codon of the ORF

Plasmid Map:



**ACCN:** NM\_001031658

**ORF Size:** 1521 bp

**OTI Disclaimer:** The molecular sequence of this clone aligns with the gene accession number as a point of reference only. However, individual transcript sequences of the same gene can differ through naturally occurring variations (e.g. polymorphisms), each with its own valid existence. This clone is substantially in agreement with the reference, but a complete review of all prevailing variants is recommended prior to use. [More info](#)

**OTI Annotation:** This clone was engineered to express the complete ORF with an expression tag. Expression varies depending on the nature of the gene.

**Components:** The ORF clone is ion-exchange column purified and shipped in a 2D barcoded Matrix tube containing 10ug of transfection-ready, dried plasmid DNA (reconstitute with 100 ul of water).

**Reconstitution Method:**

1. Centrifuge at 5,000xg for 5min.
2. Carefully open the tube and add 100ul of sterile water to dissolve the DNA.
3. Close the tube and incubate for 10 minutes at room temperature.
4. Briefly vortex the tube and then do a quick spin (less than 5000xg) to concentrate the liquid at the bottom.
5. Store the suspended plasmid at -20°C. The DNA is stable for at least one year from date of shipping when stored at -20°C.

**RefSeq:** [NM\\_001031658.1](#), [NP\\_001026828.1](#)

**RefSeq Size:** 2012 bp

**RefSeq ORF:** 1524 bp

**Locus ID:** 316519

**UniProt ID:** [P70553](#)

**Cytogenetics:** 9q33

**MW:** 55.9 kDa

**Gene Summary:** putative metal ion transporter; mouse homolog is a macrophage protein associated with resistance or susceptibility to intracellular pathogens [RGD, Feb 2006]