

## Product datasheet for **RR205886**

### **Tnfrsf14 (NM\_001015034) Rat Tagged ORF Clone**

#### Product data:

**Product Type:** Expression Plasmids  
**Product Name:** Tnfrsf14 (NM\_001015034) Rat Tagged ORF Clone  
**Tag:** Myc-DDK  
**Symbol:** Tnfrsf14  
**Synonyms:** MGC108903  
**Vector:** pCMV6-Entry (PS100001)  
**E. coli Selection:** Kanamycin (25 ug/mL)  
**Cell Selection:** Neomycin  
**ORF Nucleotide Sequence:** >RR205886 representing NM\_001015034  
**Red=Cloning site Blue=ORF Green=Tags(s)**

TTTTGTAATACGACTCACTATAGGGCGCCGGAATTCGTCGACTGGATCCGGTACCGAGGAGATCTGCC  
GCC**GCGATCGCC**

ATGGAACCTCTCCCGGGATGGGAGTCGTCACCCTGGAGCCGGGCAGACAACACCTTCAGGCTGGTGCCGT  
GTGTCTTCCTTTGAACTTGTTGCAGTGTATCTCTGCCAGCCCTGTGCAGACAGGAGGAGTTTTCTGT  
TGGGGATGAGTGCTGCCCATGTGCAATCCAGGTTACCATGTGAAGCAGGTCTGCAGTGAGCATAACAGGC  
ACAGTGTGTGCCCTGTCCCCACAGACCTATACCGCCATGCGAATGGCCTGAGCAAGTGTCTGCCCT  
GCGGAGTCTGTATCCAGACATGGGCTGCTGACCTGGCAGGAGTGTCCAGCTGGAAGGACACTGTGTG  
CAGATGCATCTCAGGTTACTTCTGTGAGAACCAGGATGGGGGCGCCTGTTCCACATGCTTGCCTCACGCC  
GCCTGCCCTCCAGGACAGAGGGTACAGAAGAGAGGTACTTACAGCCATGACACTGTATGTGCTGACTGCC  
TGACAGGAACCTTCTCACTTGGCGGGACTCAGGAGGAATGCCTGCCCTGGACCAAGTGCAGTACCTTTCA  
ACGGGAAGTAAAACATGGGACCAGCAGCACAGACACCCTGCTCCTCCAGACCTTCTACATCGTCGTT  
GTGATAGTGGGAGTTGCGATAGTGGGAGCTGGGGTAGTTGTATTCTCCTCCGCAAGCAAAGACAGCGGC  
ATACCAGCATAGTGGCCAGTGAGCTGGAGGCTTCCAGCAGGAGCAACAAGAGGACGCCATCAGGTTTCC  
AGTCATCGAGGTTGGTCTTCTGTGACCGAGGAGGAGGCCTTCAACTGCATGAATTCGGGG

**ACGCGT**ACGCGGCCGCTCGAGCAGAACTCATCTCAGAAGAGGATCTGGCAGCAAATGATATCCTGGATT  
ACAAGGATGACGACGATAAGGTTTAA



[View online »](#)

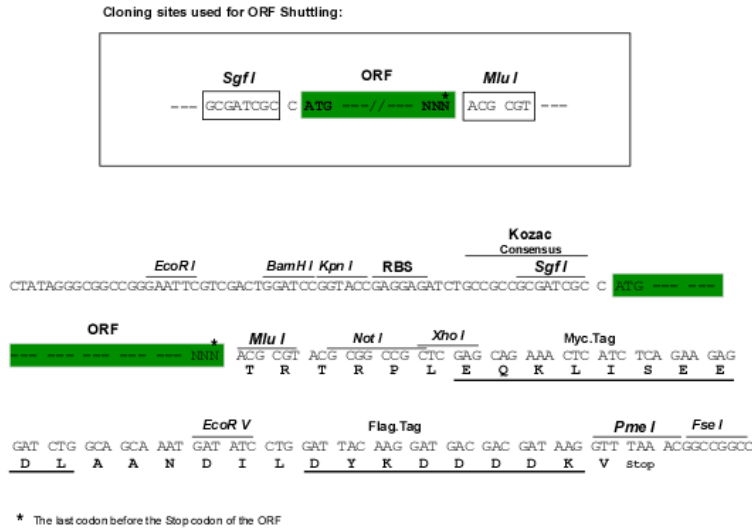
**Protein Sequence:** >RR205886 representing NM\_001015034  
Red=Cloning site Green=Tags(s)

MEPLPGWESSPWSRADNTFRLVPCVFLNLLQCISAQPLCRQEEFSVGDECCPMCNPgyHVkQVCSEHTG  
 TVCAPCPPTQYTAHANGLSKCLPCGVCDPDMGLLTWQECSSWKDTCRCISGYFCENQDGGACSTCLPHA  
 ACPPGQRVQKRGTYSHDTCADCLTGTFSLGGTQEELPWTkCSTFQREVKHGTSSTDTTCSFQTFYIVV  
 VIVGVAIVGAGVVVFLLRKQRQRTSIVASELEAFQEEQEDAIRFPVIEVGPVTEEEAAFNcMNSG

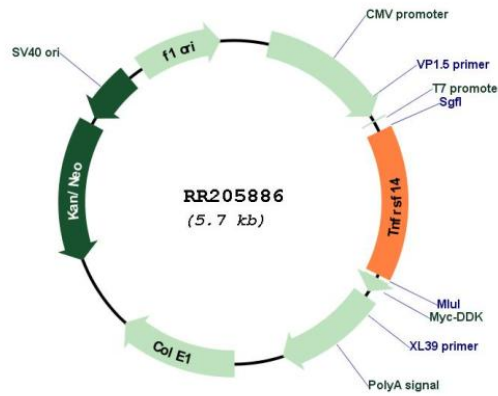
TRTRPLEQKLISEEDLAANDILDYKDDDDKV

**Restriction Sites:** SgfI-MluI

**Cloning Scheme:**



**Plasmid Map:**



**ACCN:** NM\_001015034  
**ORF Size:** 834 bp

<b>OTI Disclaimer:</b>	The molecular sequence of this clone aligns with the gene accession number as a point of reference only. However, individual transcript sequences of the same gene can differ through naturally occurring variations (e.g. polymorphisms), each with its own valid existence. This clone is substantially in agreement with the reference, but a complete review of all prevailing variants is recommended prior to use. <a href="#">More info</a>
<b>OTI Annotation:</b>	This clone was engineered to express the complete ORF with an expression tag. Expression varies depending on the nature of the gene.
<b>Components:</b>	The ORF clone is ion-exchange column purified and shipped in a 2D barcoded Matrix tube containing 10ug of transfection-ready, dried plasmid DNA (reconstitute with 100 ul of water).
<b>Reconstitution Method:</b>	<ol style="list-style-type: none"><li>1. Centrifuge at 5,000xg for 5min.</li><li>2. Carefully open the tube and add 100ul of sterile water to dissolve the DNA.</li><li>3. Close the tube and incubate for 10 minutes at room temperature.</li><li>4. Briefly vortex the tube and then do a quick spin (less than 5000xg) to concentrate the liquid at the bottom.</li><li>5. Store the suspended plasmid at -20°C. The DNA is stable for at least one year from date of shipping when stored at -20°C.</li></ol>
<b>RefSeq:</b>	<a href="#">NM_001015034.1</a> , <a href="#">NP_001015034.1</a>
<b>RefSeq Size:</b>	2089 bp
<b>RefSeq ORF:</b>	837 bp
<b>Locus ID:</b>	366518
<b>Cytogenetics:</b>	5q36
<b>MW:</b>	30.4 kDa