

Product datasheet for **RR205881**

Mtnr1b (NM_001100641) Rat Tagged ORF Clone

Product data:

Product Type: Expression Plasmids
Product Name: Mtnr1b (NM_001100641) Rat Tagged ORF Clone
Tag: Myc-DDK
Symbol: Mtnr1b
Synonyms: Mel1b-r
Vector: pCMV6-Entry (PS100001)
E. coli Selection: Kanamycin (25 ug/mL)
Cell Selection: Neomycin
ORF Nucleotide Sequence: >RR205881 representing NM_001100641
Red=Cloning site Blue=ORF Green=Tags(s)

TTTTGTAATACGACTCACTATAGGGCGCCGGGAATTCGTCGACTGGATCCGGTACCGAGGAGATCTGCC
GCC**CGGATCGCC**

ATGCTGACAACAGCTCCATCGCCAACCTGCTGTGCGGCCAGCGGGCTGGCAGCGGCCCTAGTTGGCCCG
GGTCAGCGGAGGGCGAGCCCCCTGAGACTCCCCGGGCACCCTGGGTGGCTCCCATGCTATCTACAGTAGT
CATTGTACCACAGCTGTGGACTTCGTGGGGAACCTGCTTGTGATCCTCTCGGTGCTCAGGAACCGCAAG
CTGCGGAACGCAGTAATTTATTTGTGGTGAATCTGGCCTTGGCTGACCTGGTGGTAGCCCTGTACCCTT
ACCCACTCATCCTTGTGGCCATTCTCCATGACGGTTGGTACTTGGGGAGATCCACTGTAAGGCCAGTGC
CTTTGTGATGGGCTGAGTGTGCTTGGCTGTGCTTCAACATCACAGCCATTGCCATCAACCGCTACTGG
TGCATCTGTACAGTGCACCTACCACCGAGCCTGCAGTCAGTGGCATGCTCCCCCTACATCAGCCTCA
TCTGGCTTCTCACTCTGGTGGCCTTGGTGCCCAATTTCTTTGGGGTCTCTAGAATATGACCCGCGAAT
CTATTCCTGCACCTTCATCCAGACAGCCAGCACCAATACTATGGCTGTGGTGGCCATCCACTTCCTC
CTTCCAATTGCTGTGGTGTCTTTTGTACCTGCGAATATGGATACTGGTGTCCAGGCCCCGAAGGAAGG
CAAAGGCTGAGAGAAAGCTACGCTGAGACCCAGTACCTGCGCAGTTTCTTAACCATGTTCCGAGTGT
TGTGGTTTTCGCCATATGCTGGGCCCCCTCAACTGTATTGGCCTTGCAGTGGCCATCAATCCAGAGGCA
ATGGCTCTTCAGATCCCAGAAGGCTTTTTGTACCCAGTACTTCTAGCTTACTTCAACAGCTGCCTTA
ATGCTATTGTTTATGGGCTTCTGAACCAGAACTCCGCGAGGGAGTACAAGAGGATCCTCTCGGCCCTCTG
GAGCACTGGGCGCTGCTTCCATGATGCTTCCAATGCCACCTGACTGAGGATTTGCAGGGCCAGTGCCA
CCTGCTGCCATGGCCACCATACTGTCCAGGAAGGTGCTCTC

ACGCGTACGCGGCCGCTCGAGCAGAACTCATCTCAGAAGAGGATCTGGCAGCAAATGATATCCTGGATT
ACAAGGATGACGACGATAAGGTTTAA



[View online »](#)

Protein Sequence: >RR205881 representing NM_001100641
 Red=Cloning site Green=Tags(s)

MPDNSSIANCCAASGLAARPSWPGSAEAEPPETPRAPWVAPMLSTVVIVTTAVDFVGNLLVILSVLRNRK
 LRNAGNLFVVNLALADL VVALYPYPLILVAILHDGWLGEIHKASAFVMGLSVIGSVFNITAIAINRYW
 CICHSATYHRACSQWHAPLYISLIWLLTLVALVPNFFVGSLEYDPRIYSCTFIQTASTQYTMAVVAIHFL
 LPIAVVSFCYLRIWILVLQARRKAKAERKLRLRPSDLRSFLTMFAVVFVFAICWAPLNCIGLAVAINPEA
 MALQIPEGLFVTSYFLAYFNLSCLNAIVYGLLNQNFRRREYKRILSALWSTGRCFHDASKCHLTEDLQGPVP
 PAAMATIPVQEGAL

TRTRPLEQKLISEEDLAANDILDYKDDDDKV

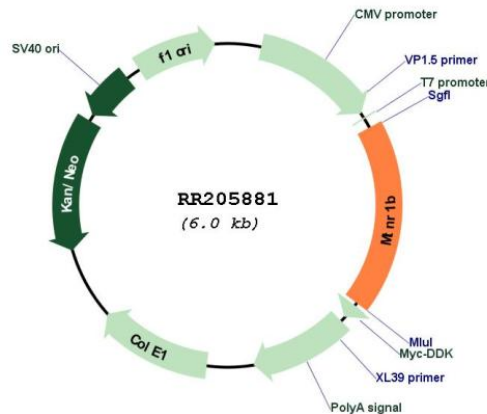
Restriction Sites:

Sgfl-MluI

Cloning Scheme:



Plasmid Map:



ACCN: NM_001100641

ORF Size:	1092 bp
OTI Disclaimer:	<p>Due to the inherent nature of this plasmid, standard methods to replicate additional amounts of DNA in E. coli are highly likely to result in mutations and/or rearrangements. Therefore, OriGene does not guarantee the capability to replicate this plasmid DNA. Additional amounts of DNA can be purchased from OriGene with batch-specific, full-sequence verification at a reduced cost. Please contact our customer care team at custsupport@origene.com or by calling 301.340.3188 option 3 for pricing and delivery.</p> <p>The molecular sequence of this clone aligns with the gene accession number as a point of reference only. However, individual transcript sequences of the same gene can differ through naturally occurring variations (e.g. polymorphisms), each with its own valid existence. This clone is substantially in agreement with the reference, but a complete review of all prevailing variants is recommended prior to use. More info</p>
OTI Annotation:	This clone was engineered to express the complete ORF with an expression tag. Expression varies depending on the nature of the gene.
Components:	The ORF clone is ion-exchange column purified and shipped in a 2D barcoded Matrix tube containing 10ug of transfection-ready, dried plasmid DNA (reconstitute with 100 ul of water).
Reconstitution Method:	<ol style="list-style-type: none">1. Centrifuge at 5,000xg for 5min.2. Carefully open the tube and add 100ul of sterile water to dissolve the DNA.3. Close the tube and incubate for 10 minutes at room temperature.4. Briefly vortex the tube and then do a quick spin (less than 5000xg) to concentrate the liquid at the bottom.5. Store the suspended plasmid at -20°C. The DNA is stable for at least one year from date of shipping when stored at -20°C.
RefSeq:	NM_001100641.1 , NP_001094111.1
RefSeq Size:	1858 bp
RefSeq ORF:	1095 bp
Locus ID:	192646
UniProt ID:	P49287
Cytogenetics:	8q12
MW:	40.2 kDa
Gene Summary:	G protein-coupled receptor for the hormone melatonin [RGD, Feb 2006]