

Product datasheet for **RR205873**

Prokr2 (NM_138978) Rat Tagged ORF Clone

Product data:

Product Type:	Expression Plasmids
Product Name:	Prokr2 (NM_138978) Rat Tagged ORF Clone
Tag:	Myc-DDK
Symbol:	Prokr2
Synonyms:	Gpr73l1
Mammalian Cell Selection:	Neomycin
Vector:	pCMV6-Entry (PS100001)
E. coli Selection:	Kanamycin (25 ug/mL)



[View online »](#)

ORF Nucleotide Sequence:

>RR205873 representing NM_138978
 Red=Cloning site Blue=ORF Green=Tags(s)

TTTTGTAATACGACTCACTATAGGGCGGCCGGAATTCGTCGACTGGATCCGGTACCGAGGAGATCTGCC
 GCC**GCGATCGCC**

ATGGTATCAGTTCTGTCCAACAGGGACCTCCACACACTGGCCCCAGCTGAAGTGCTGAACCTCCACGTGGG
 CCTATCTCCCTGACACATACCAGCCTACCTGCCACATCATCAACATGGGAGACCAGAACGAAACACAAG
 CTTTGACCAGACTTGAACCCACCCCAAGACCAGTCTCCTTGCTCCCTTAAACTACAGTTATGGAGAT
 TATGACATCCCCCTGGATGACGATGAGGATGTGACCAAGACACAGACCTTCTTTGCAGCCAAAATCGTCA
 TTGGCGTAGCCCTGGCAGGCATCATGCTAGTCTGCGGCGTTGGCAACTTTGTCTTCATTGCTGCCCTCGC
 CCGCTACAAGAAGCTGCGCAACCTTACCAACCTCCTCATCGCTAACCTGGCCATCTCTGACTTCTGGTG
 GCGATCGTCTGCTGCCCTTTGAGATGGACTACTCGTAGTACGTCTCCCTGTACGTCTCCACCAATGCTCTGCTGGCCAT
 TGCTTTGTGCCTCCGTCAACTACCTTCGTACAGTCTCCCTGTACGTCTCCACCAATGCTCTGCTGGCCAT
 CGCTATTGACAGATATCTCGCTATTGTCCACCCCTTAAAACGGATGAATTACCAGACCGCCTCCTTCTCTG
 ATCGCTTTGGTCTGGATGGTCTCCATCCTCATCGCCATCCCATCTGCCTACTTCACCACAGAAAACCATCC
 TTGTTATCGTCAAGAATCAGGAAAAGCTTCTGTGGTCAGATCTGGCCCGTGGACCAGCAGCTCTACTA
 CAAATCCTACTTCTCTCGTCTTCGGGCTTGAGTTCTGGTGGTCCCGTGGTCACTATGACCTGTGCTAT
 GCCAGGATCTCCCAGGAGCTCTGGTTCAAGGCTGTACCTGGTTTCCAGACGGAGCAGATCCGCAAGCGAC
 TGCGCTGCCGCCGAAAGACAGTGCTATTGCTCATGGGTATCCTCACAGCCTACGTGCTGTGCTGGGCGCC
 TTTCTATGGCTTTACCATAGTGCGAGACTTCTTCCCCACGCTGGTTGTGAAGGAGAAGCACTACCTCACC
 GCCTTCTATGTCGTCGAGTGCATCGCCATGAGCAACAGCATGATCAATACTATATGCTTCGTGACGGTCA
 AGAACACACCATGAAATACTTCAAGAAGATGCTGCTGCTGCACTGGCGGCCCTCACTACGGGAGTAA
 GTCCAGCGGGACCTCGACCTCAAACCAGTGGGGTTCTGCCACCGAAGAGGTGACTGTATCAGGCTA
 AAG

ACGCGTACGCGGCCGCTCGAGCAGAAACTCATCTCAGAAGAGGATCTGGCAGCAAATGATATCCTGGATT
 ACAAGGATGACGACGATAAGGTTTAA

Protein Sequence:

>RR205873 representing NM_138978
 Red=Cloning site Green=Tags(s)

MYSVLSNRDLHTLAPAEVLNSTWAYLPDTPYQPTCHIINMGDQNGNTSFAPDLNPPQDHVSLPLNYSYGD
 YDIPLDDDEDVTKTQTFFAAKIVIGVALAGIMLVCGVGNFVFIAALARYKKLRNLNLLIANLAISDFLV
 AIVCCPFEMDYVVYRQLSWEHGHVLCASVNYLRTVSLYVSTNALLAIAIDRYLAIVHPLKRMNYQTASFL
 IALVWMYSILIAIPSAFYTTETILVIVKNQEKLFCGQIWPVDQQLYYKSYFLFVGFLEFVGPVVTMTLCY
 ARISQELWFKAVPGFQTEQIRKRLRCRRKTVLLLMGILTAYVLCWAPFYGFTIVRDFPPTLVVKEKHYLT
 AFYVVECIAMNSMINTICFVTYKNNMTKYFKMLLLHWRPSHYGSKSSADLDLKTSGVPATEEVDICIRL
 K

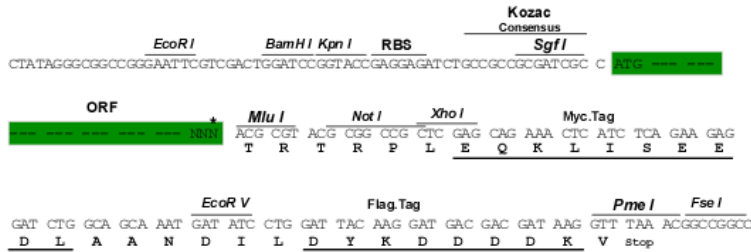
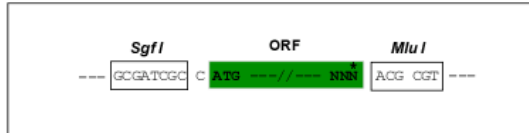
TRTRPLEQKLISEEDLAANDILDYKDDDDKV

Restriction Sites:

Sgfl-Mlul

Cloning Scheme:

Cloning sites used for ORF Shutting:



* The last codon before the Stop codon of the ORF

ACCN: NM_138978

ORF Size: 1263 bp

OTI Disclaimer: The molecular sequence of this clone aligns with the gene accession number as a point of reference only. However, individual transcript sequences of the same gene can differ through naturally occurring variations (e.g. polymorphisms), each with its own valid existence. This clone is substantially in agreement with the reference, but a complete review of all prevailing variants is recommended prior to use. [More info](#)
OTI Annotation: This clone was engineered to express the complete ORF with an expression tag. Expression varies depending on the nature of the gene.

Components: The ORF clone is ion-exchange column purified and shipped in a 2D barcoded Matrix tube containing 10ug of transfection-ready, dried plasmid DNA (reconstitute with 100 ul of water).

Reconstitution Method:

1. Centrifuge at 5,000xg for 5min.
2. Carefully open the tube and add 100ul of sterile water to dissolve the DNA.
3. Close the tube and incubate for 10 minutes at room temperature.
4. Briefly vortex the tube and then do a quick spin (less than 5000xg) to concentrate the liquid at the bottom.
5. Store the suspended plasmid at -20°C. The DNA is stable for at least one year from date of shipping when stored at -20°C.

RefSeq: [NM_138978.1](#), [NP_620434.1](#)
RefSeq Size: 1266 bp

RefSeq ORF: 1266 bp

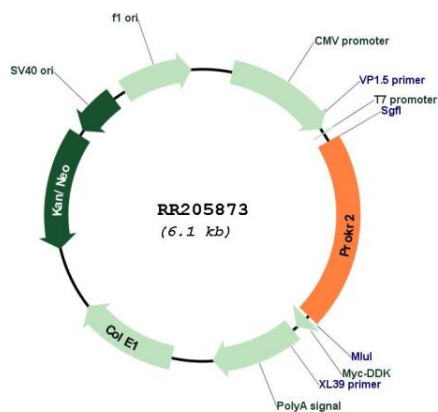
Locus ID: 192649

UniProt ID: [Q8R415](#)
Cytogenetics: 3q36

MW: 47.9 kDa

Gene Summary: G-protein-coupled receptor for prokineticin [RGD, Feb 2006]

Product images:



Circular map for RR205873