

Product datasheet for **RR205861**

Gpr149 (NM_138891) Rat Tagged ORF Clone

Product data:

Product Type:	Expression Plasmids
Product Name:	Gpr149 (NM_138891) Rat Tagged ORF Clone
Tag:	Myc-DDK
Symbol:	Gpr149
Synonyms:	leda
Mammalian Cell Selection:	Neomycin
Vector:	pCMV6-Entry (PS100001)
E. coli Selection:	Kanamycin (25 ug/mL)



[View online »](#)

ORF Nucleotide Sequence:

>RR205861 representing NM_138891
 Red=Cloning site Blue=ORF Green=Tags(s)

TTTTGTAATACGACTCACTATAGGGCGGCCGGAATTCGTCGACTGGATCCGGTACCGAGGAGATCTGCC
 GCC**CGATCGCC**

ATGTCGTTCTTCTCAGCAACTTAACAATGACTCTAGACTGTGAAAGTAAGTCATAATCTACGGACC
 TTATGAATTCGCCAGAACTCTGACTCTTCTCTCTTTTGCCTGATCTGTTAATGACTCTCGTAGCTCT
 GGTAGGCAGCATTTTCTCACTGGTTTCTCTGCTCACCATGCAGTACAGAAGTGTGTGTCTATGCTTGTG
 ACCTCTTGGTCTGTGGATGATCTCTGAGCGTCTGTGTCAGTGGCCATCTCATGGTTTTGCAGTGGCCAA
 GAGAGGCCCGGGCTACTTCCAGTCTGTGTACCACCTGCCTTACTGTATATGTGCCAGGGCCTCTC
 CAGCAACTGAAGGCGACTCTTATAGTCTTCTACAACCTTTATACGATGCACAGGACAGTGGTGAGTCAG
 TCAAGCTCCTGGCGATCAGGACAGTACTCGGTGTGGCTTAAACCGTGTGGCAGTCAGCCTGCTGCTGG
 CCTCGCTCCCGCTGTGCGGCTGGGGTGTCTTCGTGCGCACGCCTGGGGTGCCTGACCGACTGCTCCAG
 CCCATACGTGCTGCTCCTTTCGCGGTGTACGCTTCCGCTTTCGGGCTCCTGGCGGTTCTTCTGTCCCT
 CTACTIONACAGCTGCTGTGTTACAGAGGAGCCGCAAGACTCCATGCCAACTACCGAGAAATTTCTCGTG
 GCGCCTCTACTCCTGGGACCCCTGCTGTGGGGAAAGAGTGTCTGTCTGTTGCCAGAGGATGTTGAAAT
 CCCTGCTCTGCCAGGCACTGGGAGCTCCCTGAGCTCCGACATGGTGTTCACCGGGTACGCTGCTGCC
 TCTAGCGCTGGAGCCGGCAAGCGAGAGAATCTCTGGACTCCCCGTGGCTCGAGCAGCTTCCCCGTGAGCC
 TGGCACAGAAGCGCTTTGCTTTGATCCTAGCGCTGACTAAAGTCATCCTCTGGCTGCCTATGATGATCCA
 CATGGTGGTAAACACGTGGTGGGGTTTCAGAGCCTCCGGTCGATATGCTCAGCTTTCTACTAACCCGTG
 CTGGCCAGCACTGTAACACCAGTGTGGTCTTGTCTAAACGATGGGCCACTTGCCTTGTGGTGCATCA
 TCAACTGCCAGCCTGACACTACTCCGTTGCATTTCGATGGGAAAAGTCAAAGAGGAAAGGCTTTGAATT
 CAATTTATCGTTCCAACAAGTTATGGACTCTATAAGATGACACATGCAGATTACTATGACGATGATGAT
 GAAAATCCCATATCCTACCACAACCCAAAGAAATATGAGTGTGAAGCTACAAAGGAGCCTCGGGAAGACA
 ACCACGGTGTGTTCAATACCATCACAGTAGAAATCAGCACACGCCACCGCTGGACAGCGCCACACTGAC
 CGGTGTCAACAAGTGCACCAACACGGATATCCCTGAGCCCAAACAGGCCGTGAGCGAAGAAAAGGGTGCC
 TTTTCTATTAACAGAAATGTGCTATTAACATGAGAGAAGCCACCTCGTTTGAAGGTCCAGAGAGACGAC
 TGTCATGAGGAGACTCAGAAACCAGATCTTTCAGACTGGGAGTGGTGCAGGAGTAAGTCAGAACGAAC
 ACCTCGCCAGCGTTCTGGTGGTGGGCTGGCTATCCCATTTGTGCGTTCCAAGGGACTGTGTCTCTCCAA
 GCACCAACTGGGAAAACCTCTCTTTTCTACTTATGAGGTGAGTGCAGAAGGGCAAAGATAACCCCGC
 CCTCTAAGAAAATAGAAGTCTATCGATCTAAAAGTGTGGCCATGAACCGAACTCAGAAGAGTCTCCCTC
 CACGTTTGCAGACACCAACGTAAAAATACACTTGAAGTCTTGAATTTGTGACACGATGAGGCTTTA
 GACTGTGTCAATCATCAGCAACATCAGCCAGTCCCTCTACAAAAGTTCGGTCTCCTTCTCTGCGTACT
 CACGGAAGGAAAACAGGTTTGTCTCATGCGACTTAGGAGAACTGCCTCTACTCCCTCTTCTTACCCAC
 AAGTGATCCTGACGGAGATATCAACATCTATCCCAGACACAGTGGAGGCACACAGACAGAACAGCAGG
 CGGCAGCATCAAGACAGGGATGGCTACCAGGAAGAGATCCAGTTGTTAAACAAAGCCTACAGGAAAAGAG
 AAGCAGAAAGCAAGGGTAA

ACGCGTACGCGGCCGCTCGAGCAGAACTCATCTCAGAAGAGGATCTGGCAGCAAATGATATCCTGGATT
 ACAAGGATGACGACGATGAGTTTAA

Protein Sequence: >RR205861 representing NM_138891
Red=Cloning site Green=Tags(s)

```
MSFFLSNLTNDSRLWKVSHNSTDLMNSPETLTLSLFCLICLMTLVALVGSIFSLVSLTMTQYRTVVSMLV
TWSVDDLLSVLSVAIFMVLQWPREPAGYFQSLCTTSALLYMCQGLSSNLKATLIVFYNFYTMHRTVVVSQ
SSSWRSQVGLGVALTVWAVSLLLASLPLCGWGVFVRTPWGCLTDCSSPYVLLLFVAYASAFGLLAVLSVP
LTHQLLCSEEPRLHANYQEISRGASTPGTPAAGGRVLCLLPEDVEIPALPGTGSSLSDDMVFAFGQPAA
SSAGAGKRENLTWPRGSSFPVSLAQKRFALILALTKVILWLPMMIHMVVKHVVGQSLPVDMLSFLTL
LASTVTPVFVLSKRWAHLPCGCIINCQPDYSAFVGKSKRKGFEFNLFSQQSGLYKMTHADYDDE
ENPISYHNPKKYECEATKEPREDNHGVNTITVEI STTPPLDSATLTGVNKCTNTDIPEPKQAVSEEKGA
FSIKTECAINYGEATSFEGPERRLSHEETQKPDLSDEWECRSKERTPRQRSGGLAIPICAFQGTVSLQ
APTGKTLSTYEVSAEGQKITPPSKKIEVYRSKSVGHEPNSEESPSTFADTNVKIHLEVLICDNDEAL
DTVSIISNISQSSTKVRSPSLRYSRKENRFVSCDLGETASYSLFLPTSDPDGDINISIPDTVEAHRQNSR
RQHQRDRDGYQEEIQLLNKAYRKREAESKGN
```

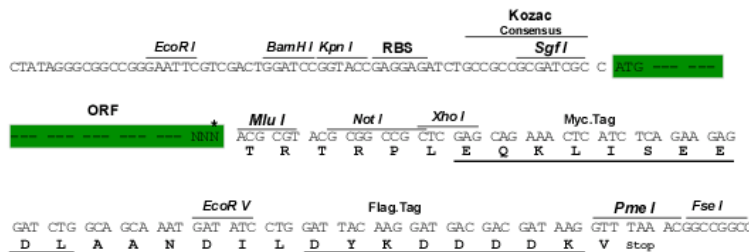
TRTRPLEQKLI SEEDLAANDILDYKDDDDKV

Chromatograms: https://cdn.origene.com/chromatograms/ja1739_f04.zip

Restriction Sites: SgfI-MluI

Cloning Scheme:

Cloning sites used for ORF Shuttling:



* The last codon before the Stop codon of the ORF

ACCN: NM_138891

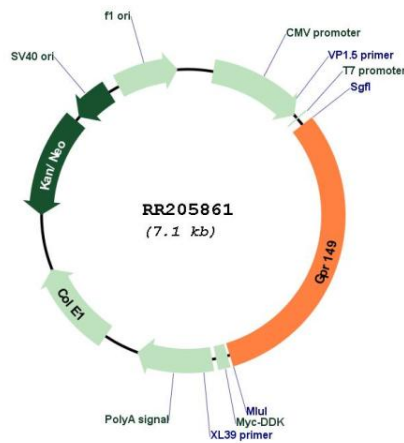
ORF Size: 2190 bp

OTI Disclaimer: The molecular sequence of this clone aligns with the gene accession number as a point of reference only. However, individual transcript sequences of the same gene can differ through naturally occurring variations (e.g. polymorphisms), each with its own valid existence. This clone is substantially in agreement with the reference, but a complete review of all prevailing variants is recommended prior to use. [More info](#)

OTI Annotation: This clone was engineered to express the complete ORF with an expression tag. Expression varies depending on the nature of the gene.

- Components:** The ORF clone is ion-exchange column purified and shipped in a 2D barcoded Matrix tube containing 10ug of transfection-ready, dried plasmid DNA (reconstitute with 100 ul of water).
- Reconstitution Method:**
1. Centrifuge at 5,000xg for 5min.
 2. Carefully open the tube and add 100ul of sterile water to dissolve the DNA.
 3. Close the tube and incubate for 10 minutes at room temperature.
 4. Briefly vortex the tube and then do a quick spin (less than 5000xg) to concentrate the liquid at the bottom.
 5. Store the suspended plasmid at -20°C. The DNA is stable for at least one year from date of shipping when stored at -20°C.
- RefSeq:** [NM_138891.1](#), [NP_620246.1](#)
- RefSeq Size:** 3845 bp
- RefSeq ORF:** 2193 bp
- Locus ID:** 192251
- UniProt ID:** [Q924Y8](#)
- Cytogenetics:** 2q31
- MW:** 81 kDa
- Gene Summary:** induced during early steps of astrocyte differentiation [RGD, Feb 2006]

Product images:



Circular map for RR205861